

300W solar panel can be connected in parallel with 100w





Overview

The short answer is, yes, you can mix solar panels that have different wattages. But it is not usually advised, because mixing different wattage panels reduces the efficiency and power output. The reason for this is simple. Different wattage panels have different voltage and amps outputs. Can you connect solar panels with different Watts in parallel?

You can connect solar panels with different watts in parallel if they have similar voltages. You can connect solar panels with different voltages in series if they have similar amps. If you connect mismatched solar panels without matching the amps or voltages, performance is going to suffer.

How to connect solar panels?

The other system components, such as a charge controller, battery, and inverter. There are two main types of connecting solar panels – in series or in parallel. You connect solar panels in series when you want to get a higher voltage. If you, however, need to get higher current, you should connect your panels in parallel.

Can a 200 watt solar panel be used with a 100 watt panel?

Have you purchased a 200-watt solar panel, and wondered if it can be used with your old 100-watt panel?

The short answer is, yes, you can mix solar panels that have different wattages. But it is not usually advised, because mixing different wattage panels reduces the efficiency and power output. The reason for this is simple.

Should solar panels be connected in series or parallel?

Both in series and parallel connection, plugging a panel of a lower power rating to the array drags the whole output power down. The lower the rating, the higher the loss of solar generated power. This, however, is much more crucial for panels connected in parallel.



What happens if you connect solar panels in parallel?

When you connect solar panels in parallel, the total output voltage of the solar array is the same as the voltage of a single panel, while the total output current is a sum of the currents passing through each panel. The latter is only valid provided that the panels connected are of the same type and power rating.

How many watts can a 200W solar panel output?

The 200W panels are at 8A and 25V, while the 100W panels are 5A and 20V. Total possible output is 900 watts. Connect all solar panels in parallel. Remember that in parallel wiring the amps are added but the voltage is not. So we have 39 amps. $8+8+8+5+5+5 = 39$ The voltage is not added up. But there are two voltages, 25V and 20V.



300W solar panel can be connected in parallel with 100w



[Maximum input panels for victron 75.15 charge controller](#)

Hi Team, How many panels can I safely connect to the CC? Looking for someone to poke holes in my logic, please. PV: 2 x 100W Rich ...

[Request Quote](#)

[How to Connect Solar Panels in Parallel](#)

This setup is common in 12V or 24V systems where you want to safely charge batteries or run low-voltage inverters. In this guide, we'll walk you through how to connect ...

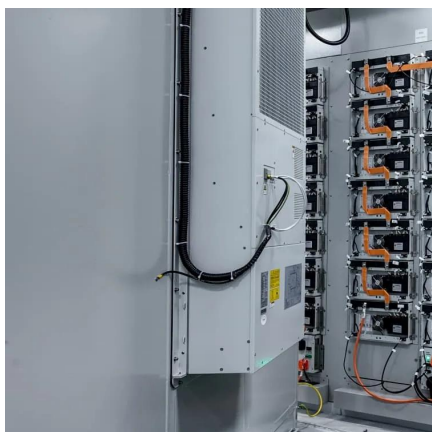
[Request Quote](#)



[MPPT charge controller calculator: Find the right solar ...](#)

For the 2nd example, we have 4 100W-12V solar panels, these panels are wired in 2S2P (2 parallel strings with 2 solar panels in each string). ...

[Request Quote](#)



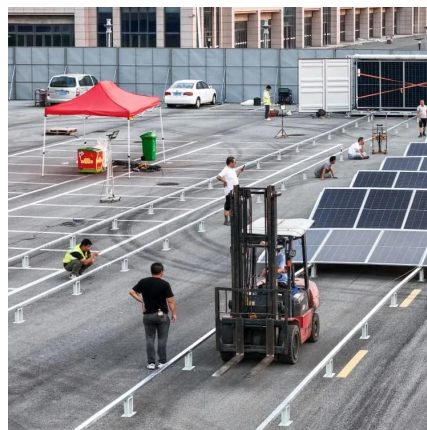
[Vtoman Portable Power Stations: Connect Any Solar Panel](#)

Learn how to connect solar panels to Vtoman power stations. Discover compatible models,



input limits, and setup tips for efficient solar charging.

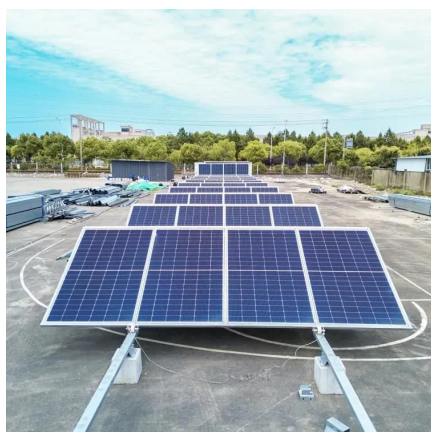
[Request Quote](#)



[Can I connect 3 100w panels to one charge controller?](#)

Yes, you can mix & match but it takes luck to get panels to be close enough to not nerf each other. The easiest way to mix & match is always going to be parallel charge controllers.

[Request Quote](#)



[Mixing solar panels - Dos and Don'ts](#)

There are two main types of connecting solar panels - in series or in parallel. You connect solar panels in series when you want to get a higher voltage. If you, however, need to get higher ...

[Request Quote](#)



[How to Connect Solar Panels in Parallel](#)

Learn how to connect solar panels in parallel to boost current while maintaining voltage, with wiring diagrams, safety tips, and expert advice.

[Request Quote](#)





[Question about mismatched panel setup](#)

I have a Bouge RV splitter to run panels in parallel so I also considered splitting the 300 watt panel off from the two series connected 100 watt panels and running them in ...

[Request Quote](#)



Connecting multiple solar panels and controllers to a single ...

I have 2 identical 100W solar panels each with a built-in PWM controller connected to 2 x 130Ah 12V batteries wired in parallel. The 2 panels connect to a bifurcated cable with Anderson plugs ...

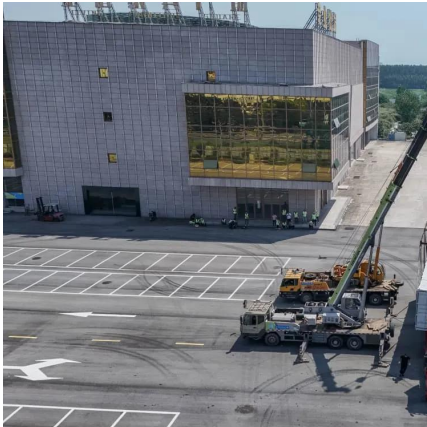
[Request Quote](#)



How to connect solar panels together: Series, parallel, combo

Wondering how to connect solar panels together or even how to connect multiple solar panels together? In this guide, we'll explore three common wiring methods--series, ...

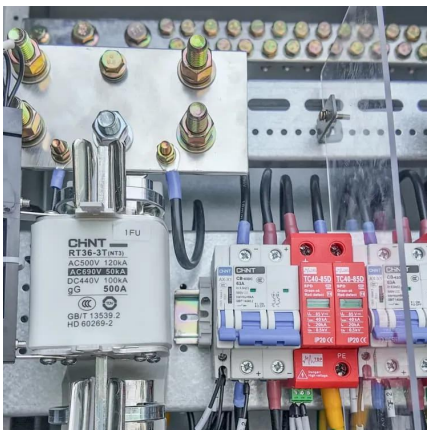
[Request Quote](#)



[Solar Panel Series & Parallel Calculator](#)

To wire solar panels in parallel, you need to buy the appropriate branch connectors for the number of panels you're wiring in parallel. (You may also need to buy inline MC4 fuses ...

[Request Quote](#)



[Can I Use Solar Panels of Different Wattage?](#)

Yes it is possible, but you should not do it and in this guide we explain why. Solar panels of different watts should not be used together because they have different voltages and amps.

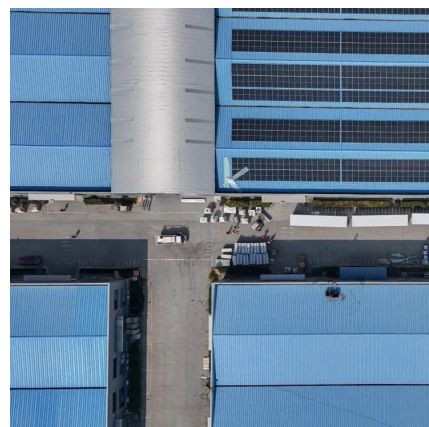
...

[Request Quote](#)

[What are the rules for mixing panels of](#)

Fuse each string at 10 amps. Option 5, add one 100 watt to the existing two in series, connect the remaining 3 off 100 watt in series and then add in parallel. There are few ...

[Request Quote](#)





Using Mismatched Solar Panel Sizes

Same solar panels as last time, but if the three 200w solar panels were wired in series and the 100w solar panels were wired in series, then those series ...

[Request Quote](#)

[How to Wire Solar Panels in Series-Parallel Configuration?](#)

This setup connects the solar panels to batteries, AC and DC loads through a charge controller, battery, and UPS/inverter. Depending on the system requirements and ...

[Request Quote](#)



[Connect solar panels in series or parallel?](#)

I just had the 400 watts of flexible solar panels on my RV replaced with 400 watts using rigid panels, and had the existing PWM controller replaced with a Victron 30 amp MPPT ...

[Request Quote](#)

Mixing Different Wattage Solar Panels , Solar Power Authority

Properly done, yes you can parallel the panels for more current. You can use solar panels with different wattages and brands, but you have to connect them correctly. Find out the safe way ...

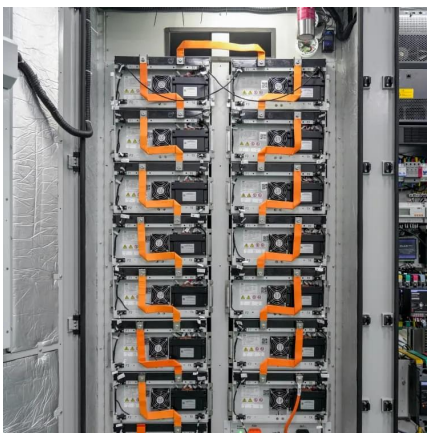
[Request Quote](#)



[What Solar Panel Size Do I Need to Charge a 48V Battery?](#)

12V and 24V solar panel systems are still the most commonly used, but 48V batteries are becoming prevalent. If you want to buy a 48V battery, you have to use the right solar panel ...

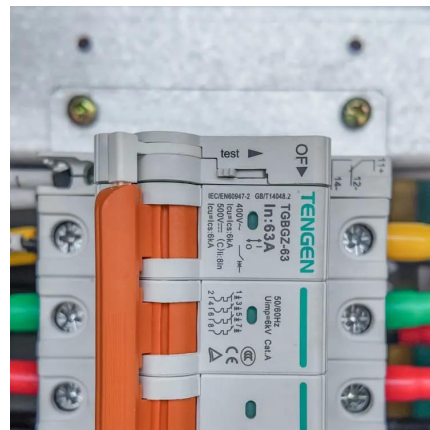
[Request Quote](#)



[Solar Panels: Connected In Parallel Or In Series](#)

In parallel, as long as the solar panels have the same output voltage, they can be connected in parallel to the controller for use. At this time, ...

[Request Quote](#)



[How to Connect Two Solar Panels to one Battery](#)

Step 2: Connect Your Two Solar Panels Together
In this step, you will learn how to connect two solar panels. This can be done in series or in ...

[Request Quote](#)

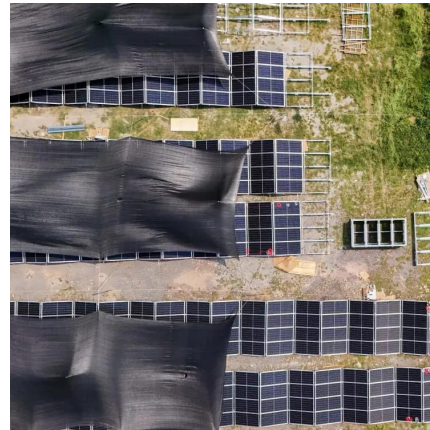




[What Size Fuse Do I Need for My Solar Panels?](#)

What Size Fuse is Needed for a 100 Watt Solar Panel? Assuming you are talking about a 100W solar panel connected in series with other ...

[Request Quote](#)



[Solar Panel Series & Parallel Calculator](#)

This blog post will teach you how using mixed and mismatched sizes of solar panels in the same array will affect the output of the entire array.

[Request Quote](#)

[Mixing Different Wattage Solar Panels](#)

Have you purchased a 200-watt solar panel, and wondered if it can be used with your old 100-watt panel? The short answer is, yes, you can mix solar panels that have different wattages.

[Request Quote](#)



Contact Us

For catalog requests, pricing, or partnerships, please visit:
<https://www.espaciovet.es>