

4 strings of 12v lithium iron phosphate battery pack 12 8v





Overview

What is the difference between LiFePO₄ and lithium iron phosphate?

The nominal voltage of each cell of a lead-acid battery is 2.1V while the LiFePO₄ is 3.2V. To connect cells in series to form a 12V battery pack, lithium iron phosphate only needs 4 cells ($3.2V \times 4 = 12.8V$) compared to the 6 cells of a lead-acid battery ($2.1V \times 6 = 12.6V$).

How many volts is a LiFePO₄ battery?

Please click Knowledge on LiFePO₄ battery to learn more detail. LFP cell has 3.2V nominal working voltage and shall be cut-off power at 3.6-3.8V per cell during charging. Please see the table below to see comparison between LFP and other rechargeable batteries.

What is a 12V monoblock LiFePO₄ battery?

It is necessary to read the manufacturer's instructions carefully. 12V MonoBlock LiFePO₄ battery is a replacement of lead-acid battery, the terminal is the same as the lead battery, and the connection is also similar. It can be installed in any direction, and please note that the actual voltage of 12V LiFePO₄ battery is 12.8V.

What is the recommended charge/discharge current for LiFePO₄ batteries?

Since the recommended charge/discharge current is 0.5C for LiFePO₄ batteries, it is much higher than 0.2C for lead-acid batteries. LiFePO₄ batteries are more appropriate than lead-acid batteries for these applications.

Why is LiFePO₄ battery used in EVs?

LiFePO₄ battery is lighter, faster, and has better performance in high temperatures. High Rate LiFePO₄ battery is used in EVs, because of its safety. BYD is using their blade cells in the new series of "HAN", the dynasty cars.

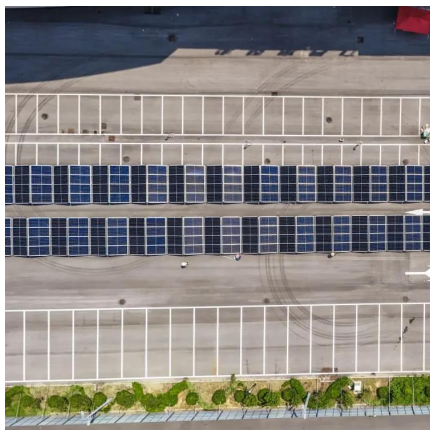
Are LiFePO₄ batteries compatible with lead-acid batteries?



LiFePO₄ batteries are compatible with lead-acid battery equipment all the while having higher discharge platform, volumetric specific capacity, cycle life.



4 strings of 12v lithium iron phosphate battery pack 12 8v



[The Ultimate Guide of LiFePO4 Battery](#)

To connect cells in series to form a 12V battery pack, lithium iron phosphate only needs 4 cells ($3.2V \times 4 = 12.8V$) compared to the 6 cells of a ...

[Request Quote](#)

12.8V Lithium-ion Phosphate LiFePO4 Battery Pack Manufacturer , ACE Battery

With models ranging from 12.8V 50Ah to 12.8V 300Ah, these lithium iron phosphate (LiFePO4) batteries provide a reliable and efficient solution for various applications, outlasting ...

[Request Quote](#)



365Energy

365 Energy Battery Lithium LifePO4 12.8V 1.28KWh 100Ah Experience cutting-edge energy storage with the 365 Energy Battery Lithium LifePO4, a high ...

[Request Quote](#)

How Many Cells Are In A 12V LiFePO4 Battery Pack? A Guide To

The standard configuration for cells in 12V LiFePO4 (lithium iron phosphate) battery packs



consists of four cells connected in series. Each cell provides a nominal voltage ...

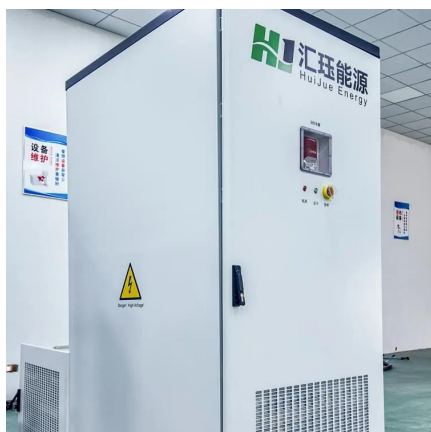
[Request Quote](#)



[ECO-WORTHY 12V 100AH LiFePO4 Lithium Battery with ...](#)

Buy ECO-WORTHY 12V 100AH LiFePO4 Lithium Battery with Bluetooth, Max.1280Wh Energy, Low Temperature Protection, Group 24, Built-in 100A BMS, Perfect for ...

[Request Quote](#)



Lithium Battery Smart 12,8V & 25,6V

Lithium battery Smart 12,8V & 25,6V has a longer service life, superior reliability and excellent efficiency. Find a dealer near you.

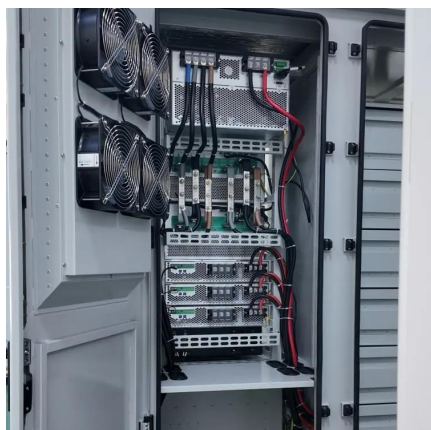
[Request Quote](#)



12.8V (12V) LiFePO4 Battery Packs

12.8V LiFePO4 batteries can be used to replace 12V Nimh / Nicd / Lead Acid Batteries. Lithium Iron Phosphate (LiFePO4, LFE) is new generation Li-Ion rechargeable battery for high power ...

[Request Quote](#)

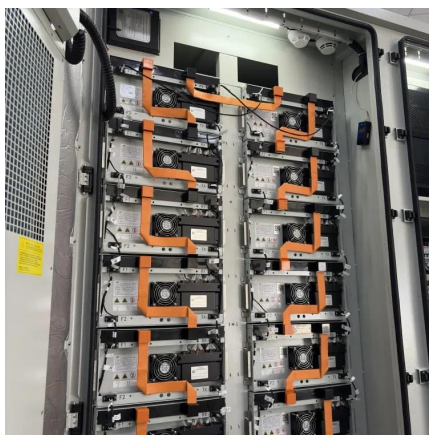




[Best LiFePO4 Batteries: Comparison of All Top ...](#)

Lithium Iron Phosphate is one of the best deep cycle batteries that you can get for any application. Choosing any of our top picks above will ...

[Request Quote](#)



12.8V (12V) LiFePO4 Battery Packs

7 rows· 12.8V LiFePO4 batteries can be used to replace 12V Nimh / Nicd / Lead Acid Batteries. Lithium Iron Phosphate (LiFePO4, LFE) is new generation Li-Ion rechargeable battery for high ...

[Request Quote](#)



[TalentCell 12V 24Ah LiFePO4 Battery Pack LF4040, 12.8V ...](#)

LF4040 12V lithium ion battery pack. Compatible with LED strip, Digital/CCTV cameras, 12 volt HDTV, portable tv, Booth lighting, Bluetooth speaker, 12 volt pump, Fish ...

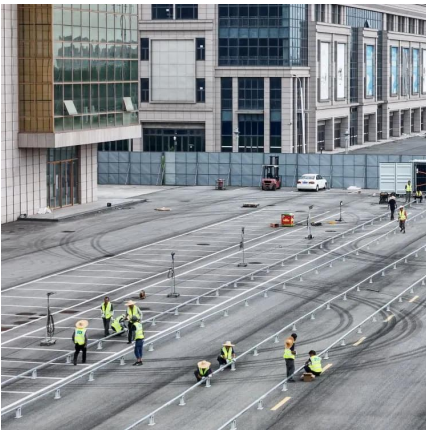
[Request Quote](#)



[MAENT® 12V 12ah LifePO4 Lithium Iron Phosphate ...](#)

MAENT® 12V 12ah LifePO4 Lithium Iron Phosphate Battery LFP Battery Rechargeable Battery Pack 4S2P 12.8V 14.6V Battery Pack for ups Spray ...

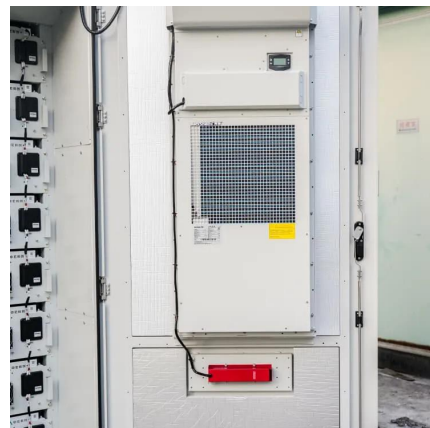
[Request Quote](#)



[EG4® LifePower4 12V 400AH Lithium Iron Phosphate Battery](#)

Introducing the EG4 Lithium Battery 12.8V (12V), boasting a robust 400AH capacity and a formidable 5.12kWh power output, all managed by a formidable 200A internal battery ...

[Request Quote](#)



Pro

Free shipping! The Renogy 12V 200Ah Pro LiFePO4 Battery makes getting access to safe, trusted power easier. It is built to withstand splashes, heat, vibrations, and other challenges.

[Request Quote](#)



[12V 100Ah LiFePO4 Deep Cycle Lithium Battery](#)

The weight of the lithium iron phosphate battery is 30% lighter than the lead-acid battery of the same capacity. Without memory effect, no matter what state the battery is, it can be used as ...

[Request Quote](#)

[TalentCell 12V 24Ah LiFePO4 Battery Pack LF4040, ...](#)

LF4040 12V lithium ion battery pack. Compatible with LED strip, Digital/CCTV cameras, 12 volt HDTV, portable tv, Booth lighting, Bluetooth ...

[Request Quote](#)



REGO

As the industry's first slimline solid-state LiFePO4 battery, it packs powerful performance into an ultra-thin 2.4-inch design, perfect for tight spaces in 4WD, truck campers, and RVs.

[Request Quote](#)

Cells

A 12V LiFePO4 battery typically consists of four cells connected in series, each contributing to the total voltage and performance of the battery.

...

[Request Quote](#)



Cells

A 12V LiFePO₄ battery typically consists of four cells connected in series, each contributing to the total voltage and performance of the battery. Proper management and ...

[Request Quote](#)



[12V 100Ah Lithium Iron Phosphate \(LiFePO₄\) battery](#)

12V 100Ah Lithium Iron Phosphate (LiFePO₄) Rechargeable Lithium Battery supply by UNICELL in Singapore and Malaysia UNICELL a leading battery ...

[Request Quote](#)



[The Ultimate Guide of LiFePO₄ Battery](#)

One battery pack with 4 single LiFePO₄ cells in series is 12.8V, which is close to 12V, the voltage of the popular 6 cells lead-acid batteries. The voltages are still in the range of ...

[Request Quote](#)





[Mastering 12V Lithium Iron Phosphate \(LiFePO4\) Batteries](#)

In this comprehensive technical article, we delve deep into the world of 12V LiFePO₄ batteries, unveiling their myriad of benefits, addressing potential limitations, and exploring ...

[Request Quote](#)



[Buy LiFePO₄ Batteries Online - mrpositive .nz](#)

Lithium Iron Phosphate (LiFePO₄) batteries are a form of Lithium Ion chemistry. LiFePO₄ batteries offer far greater cycle life, discharge power (depending on model) and are generally ...

[Request Quote](#)

Amazon : Lifepo4 Battery

LFP/Lithium ion Phosphate, LiFepo₄ Cell, HX 32700-3.2V 6000Mah, 2000+ Duty Cycle, BIS Approved A Grade Cells I Pack of 4 Nos I for DIY Battery Pack Making of 12V, 6Ah, Solar ...

[Request Quote](#)



[EG4® LifePower4 12V 400AH Lithium Iron Phosphate ...](#)

Introducing the EG4 Lithium Battery 12.8V (12V), boasting a robust 400AH capacity and a formidable 5.12kWh power output, all managed by a formidable ...

[Request Quote](#)



[Mastering 12V Lithium Iron Phosphate \(LiFePO4\) ...](#)

In this comprehensive technical article, we delve deep into the world of 12V LiFePO₄ batteries, unveiling their myriad of benefits, addressing ...

[Request Quote](#)



[12.8V Lithium-ion Phosphate LiFePO₄ Battery Pack ...](#)

With models ranging from 12.8V 50Ah to 12.8V 300Ah, these lithium iron phosphate (LiFePO₄) batteries provide a reliable and efficient solution for ...

[Request Quote](#)

[DIY LiFePO₄ Battery Pack: Step-by-Step Guide \(2025 Update\)](#)

How to Build a LiFePO₄ Battery Pack: DIY Guide with Expert Tips (2025) Why Build a LiFePO₄ Battery Pack? LiFePO₄ (Lithium Iron Phosphate) batteries dominate renewable energy ...

[Request Quote](#)





[How can LiFePO4 batteries be used to replace lead-acid?](#)

To connect cells in series to form a 12V battery pack, lithium iron phosphate only needs 4 cells ($3.2V \times 4 = 12.8V$) compared to the 6 cells of a lead-acid battery ($2.1V \times 6 = 12.6V$).

[Request Quote](#)

[12.8V 12V Lithium iron ion phosphate battery batteries ...](#)

High-performance 12V lithium iron phosphate batteries with BMS for deep cycle applications, offering durability and efficient energy storage solutions.

[Request Quote](#)



Contact Us

For catalog requests, pricing, or partnerships, please visit:
<https://www.espaciovet.es>