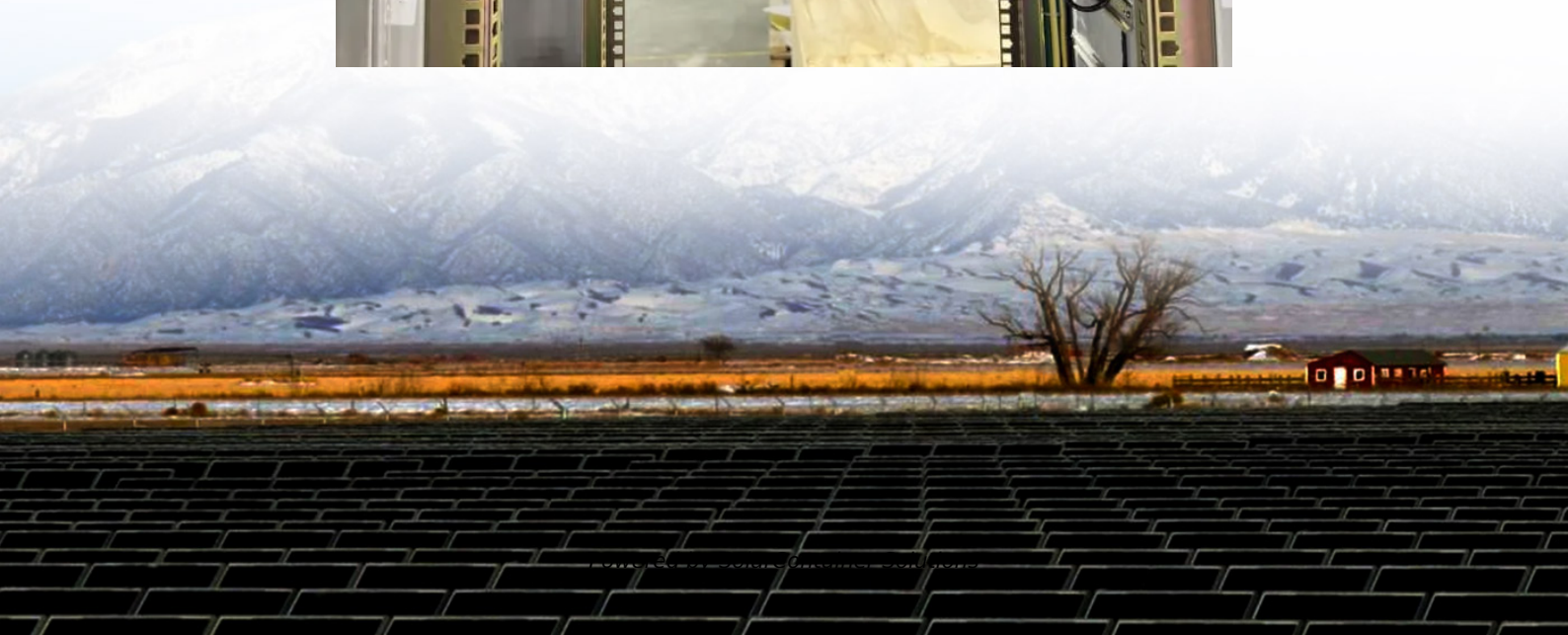


48v power supply for signal tower base station





Overview

Why is a -48 voltage system important?

In the world of telecommunications, ensuring uninterrupted power supply is crucial for maintaining reliable communication networks. Telecom power systems, specifically -48 voltage systems, play a vital role in providing power to various telecom equipment and network infrastructure.

What is a -48 telecom power system?

Telecom power systems, specifically -48 voltage systems, play a vital role in providing power to various telecom equipment and network infrastructure. In this blog post, we will guide you through the process of installing a -48 telecom power system, highlighting key considerations and best practices for a successful implementation.

Why is a -48 V DC a positive ground system?

The short story is that -48 V DC, also known as a positive-ground system, was selected because it provides enough power to support a telecom signal but is safer for the human body while doing telecom activities.

What is a -48V back-up battery converter?

The -48V back-up battery converter is similar in construction and complexity to the single-output, high-power VoIP converter previously discussed. The power factor corrected (PFC) AC/DC produces the supply voltage for the 3G Base station's RF Power amplifier (typ. +27V) and the bus voltage for point-of-load converters.

How do I choose a reliable -48 telecom power system?

Conduct load calculations to determine the appropriate capacity and redundancy needed for your power system. Choosing the right power equipment is crucial for a reliable -48 telecom power system. Consider the following factors during the selection process: a. Rectifiers: Select high-quality



rectifiers designed specifically for telecom applications.

How do you maintain a -48 telecom power system?

Regularly inspect and maintain the power system, including cleaning equipment, testing battery performance, and addressing any alarms or alerts promptly. Installing a -48 telecom power system requires careful planning, equipment selection, and adherence to industry standards.



48v power supply for signal tower base station



[48VDC Solar DC Power System for Telecom Base Station](#)

It can provide reliable power supply in the case of a power failure completely in plant or substation. The traditional DC systems connect battery pack and run with float charging mode.

...

[Request Quote](#)

SmartGen HGM4020T Generator controller. Communication Base Station

Scheduled Start Genset Maintenance DC Supply
DC (8~35)V Case Dimensions (mm) 135*110*44
Panel Cutout (mm) 116*90 Operating Temp.
(-25~+70)? Product Overview: ...

[Request Quote](#)



["Negative" 48 Volt Power: What, Why and How](#)

Configuration Defined Telecom and wireless networks typically operate on 48 volt DC power. But unlike traditional 12 and 24 volt systems which have the minus ...

[Request Quote](#)

SmartLi 48V DC DC Backup Battery Power for Telecom Base Station

48V Backup Battery Power for Telecom Base Station with DCDC module can boost up your



battery power and SNPS to monitor and control LFP battery

[Request Quote](#)



[Acrel Amc Multi-Circuits DC Energy Meter Used in ...](#)

Base station dedicated DC energy meter AMC16 (L)-DETT is specially designed for base stations where have sharing requirements, and ...

[Request Quote](#)

What Is A Base Station?

A base station is an integral component of wireless communication networks, serving as a central point that manages the transmission and ...

[Request Quote](#)



[Communication Base Station Power Supply UNIT](#)

Communication Base Station Power Supply UNIT, find complete details about Communication Base Station Power Supply UNIT, 48v solar charge ...

[Request Quote](#)



[SmartGen HGM4020DC Genset Controller.](#)

SmartGen HGM4020DC Genset Controller.
Communication Base Station
Controllers. Technical Parameters: Display LCD
(132*64) Operation Panel ...

[Request Quote](#)



[Communications System Power Supply Designs](#)

Unique solutions for DSL, VoIP and 3G Base Stations illustrate the wide range of power system architectures and the opportunities available for higher level integration.

[Request Quote](#)

[48V DC FOR TELECOMMUNICATIONS: POWERING AN INDUSTRY ...](#)

An advantage of negative 48V is that four 12V batteries connected in series create 48V DC usable as a backup power source. Central telecom stations are known to have ...

[Request Quote](#)



How to Install a -48V Telecom Power System: A Step-by-Step ...

Learn how to install a -48V telecom power system step-by-step. This guide covers equipment selection, design considerations, wiring, and essential maintenance tips for reliable ...

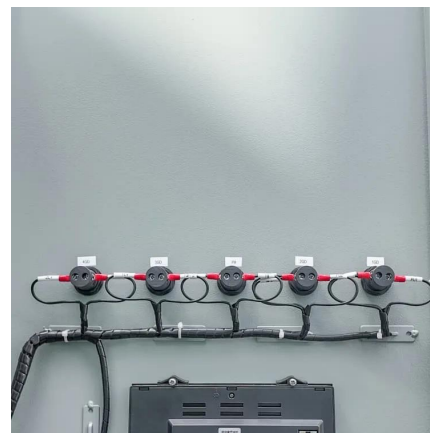
[Request Quote](#)



[SmartLi 48V DC DC Backup Battery Power for ...](#)

48V Backup Battery Power for Telecom Base Station with DCDC module can boost up your battery power and SNPS to monitor and control LFP battery

[Request Quote](#)



What is 48V 10A Tower Base Station Communication Power Supply ...

What is 48V 10A Tower Base Station Communication Power Supply DC, 1k 5k dc1 manufacturers & suppliers on Video Channel of Made-in-China .

[Request Quote](#)

Why does the communication base station use -48V power supply?

Because the smallest communications network and communications engineering are in the telephone network, the telecom bureau power supply voltage are 48V.

[Request Quote](#)





[Building a Better -48 VDC Power Supply for 5G and Next](#)

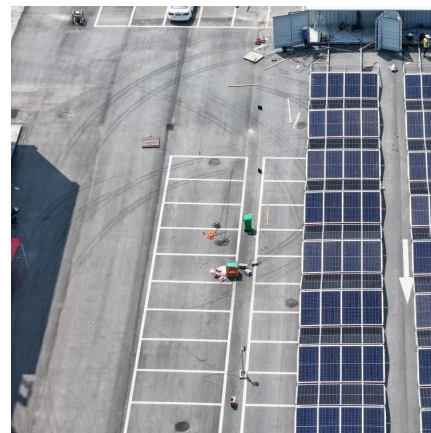
ADI will continue to respond to these and similar challenges by developing more -48 V DC high power conversion solutions designed for the 5G market while drawing on considerable ...

[Request Quote](#)

["Negative" 48 Volt Power: What, Why and How](#)

Configuration Defined-48V DC Battery and Earth Telecom and wireless networks typically operate on 48 volt DC power. But unlike traditional 12 and 24 volt systems which have ...

[Request Quote](#)



Why does most of the communication power supply use -48V power supply?

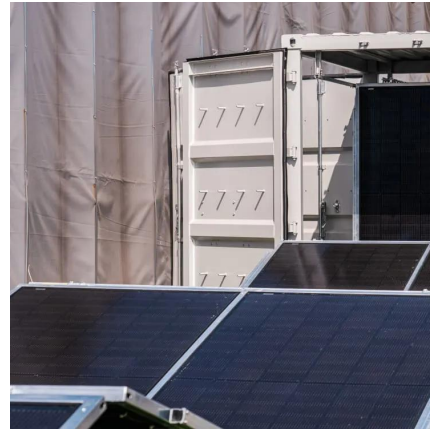
The use of -48V power supply can provide semiconductor devices with a more stable and cleaner power supply by using techniques such as the voltage regulator circuit and ...

[Request Quote](#)

[Study on Power Feeding System for 5G Network](#)

High Voltage Direct Current (HVDC) power supply HVDC systems are mainly used in telecommunication rooms and data centers, not in the Base station. With the increase of ...

[Request Quote](#)



[48V 10A Tower Base Station Communication Power ...](#)

ACMEseries high frequency switching pulse power supply is ACME independently developed and produced, a new high-quality, wide voltage, low ...

[Request Quote](#)



[Telecom Tower Base Station Rack Mount Battery 48V news](#)

If you want to know more about the Telecom Tower Base Station Rack Mount Battery 48V, the following articles will give you some help. These news is the latest market situation, trend in ...

[Request Quote](#)



48V DC Power System 50A Maximum Input Current For Telecom Base Station

High quality 48V DC Power System 50A Maximum Input Current For Telecom Base Station from China, China's leading Telecom Solar Power Systems product market, With strict quality ...

[Request Quote](#)





[Base Transceiver Station: Core Functionality Explained](#)

Power Supply and Cooling Systems A BTS needs steady power and cooling to work well. It often uses a 48V D.C. power source with backup batteries. The power keeps the BTS ...

[Request Quote](#)



[48V 10A Tower Base Station Communication Power Supply DC](#)

ACMEseries high frequency switching pulse power supply is ACME independently developed and produced, a new high-quality, wide voltage, low noise dedicated power supply.

[Request Quote](#)

Telecom lithium battery 48V 100Ah, BTS backup power system ...

This telecom lithium battery 48V 100Ah delivers full 100A discharge capability for powering microwave radios, remote radio heads (RRHs), and BBU shelves during extended outages - a ...

[Request Quote](#)



Why choose SVC 48V Lithium iron battery for Telecom base station?

A telecom base station is an interface device for mobile devices to access the Internet . The construction of mobile communication base stations is an important part of ...

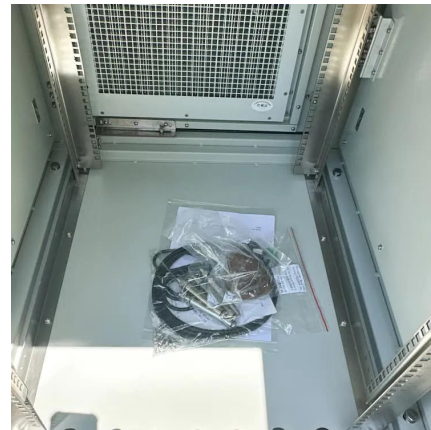
[Request Quote](#)



Why does the communication base station use -48V ...

Because the smallest communications network and communications engineering are in the telephone network, the telecom ...

[Request Quote](#)



Why does most of the communication power supply ...

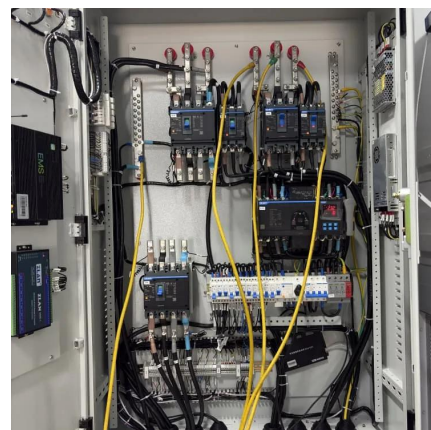
The use of -48V power supply can provide semiconductor devices with a more stable and cleaner power supply by using techniques such as the ...

[Request Quote](#)

48VDC Solar DC Power System for Telecom Base ...

It can provide reliable power supply in the case of a power failure completely in plant or substation. The traditional DC systems connect battery pack and run ...

[Request Quote](#)





[Building a Better -48 VDC Power Supply for 5G and ...](#)

ADI will continue to respond to these and similar challenges by developing more -48 V DC high power conversion solutions designed for the 5G market while ...

[Request Quote](#)

[5G Base Station 48V Rectifier Outdoor Power Supply](#)

The Soetec Switch Mode Power Supply is a highly integrated outdoor 5G micro base station power supply system, it combines AC input power distribution, lightning protection, switching ...

[Request Quote](#)



Contact Us

For catalog requests, pricing, or partnerships, please visit:
<https://www.espaciovet.es>