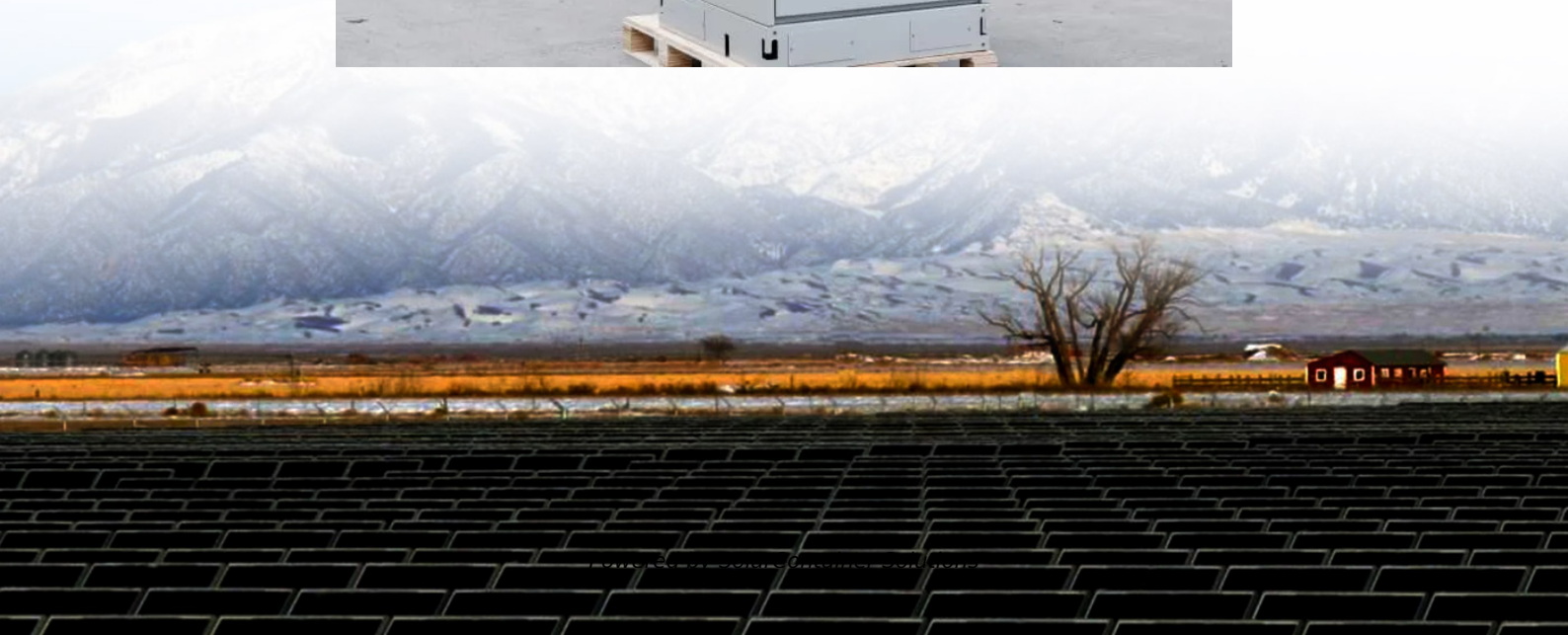


# **5 lithium battery packs connected in series and parallel**





## Overview

---

Are series and parallel connection of lithium batteries safe?

The series and parallel connection of lithium batteries is a key technology to increase voltage and capacity, but it also contains safety risks. This article will analyze in detail the principles, methods and precautions of series and parallel connection of lithium batteries to help you avoid potential risks and build a battery system correctly.

How to charge parallel lithium battery packs?

Specific principles must be followed when charging parallel lithium battery packs: Use a matching charger: The voltage must be suitable for the nominal voltage of the individual batteries. The current setting is reasonable: usually 0.2-0.5C of the total capacity after parallel connection.

Can lithium-ion batteries be connected in parallel or in series?

Connecting lithium-ion batteries in parallel or in series is not as straightforward as a simple series-parallel connection of circuits. To ensure the safety of both the batteries and the individual handling them, several important factors should be taken into consideration.

Are batteries A and B in parallel?

Batteries A and B are in parallel. Batteries C and D are in parallel. The parallel combination A and B is in series with the parallel combination C and D. Again, the total battery pack voltage is 24 volts and that the total battery pack capacity is 40 amp-hours.

What is a series parallel battery connection?

Series-parallel. That's not wiring your batteries in both series and parallel. That would short your battery system! A series-parallel connection is when you wire several batteries in series. Then, you create a parallel connection to another set of batteries in series. By doing this, you can increase both voltage



and capacity.

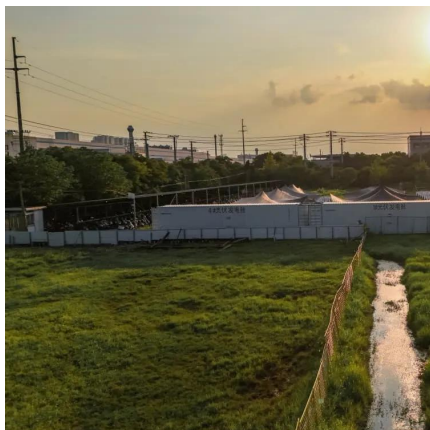
Why are lithium batteries connected in series?

Lithium batteries are connected in series when the goal is to increase the nominal voltage rating of one individual lithium battery - by connecting it in series strings with at least one more of the same type and specification - to meet the nominal operating voltage of the system the batteries are being installed to support.



## 5 lithium battery packs connected in series and parallel

---



### [How to Connect Batteries in Parallel](#)

Battery University - Parallel and Series Battery Configurations This resource provides an in-depth explanation of the advantages and disadvantages of connecting batteries ...

[Request Quote](#)

### [Can You Mix Different Capacity Lithium Batteries?](#)

Yes, you can mix different capacity lithium batteries, whether a normal 12V 100Ah battery or a Lithium server rack battery. You can combine ...

[Request Quote](#)



### [Everything About Lithium Battery Series & Parallel](#)

Series connection is the most common method to make the battery pack reach the required operating voltage. Series connection is the ...

[Request Quote](#)



### [How to Connect Lithium Batteries in Series and Parallel?](#)

In this article, we'll explore the basics and provide detailed, step-by-step instructions on



how to connect lithium batteries in series, parallel, and series-parallel configurations.

[Request Quote](#)



## Batteries in series vs parallel: what are the differences ...

1. What are series and parallel batteries? 1.1 Series Battery Series battery refers to the positive terminal of one battery connected to the negative ...

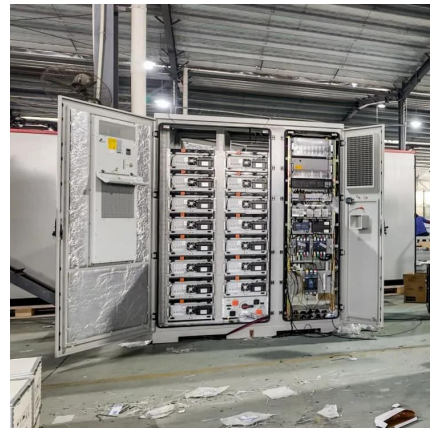
[Request Quote](#)



## Can You Link Battery Packs? Understanding Series Vs. Parallel

Connecting battery packs in series increases the total voltage while maintaining the same capacity. This configuration can be useful when higher voltage is needed. Conversely, ...

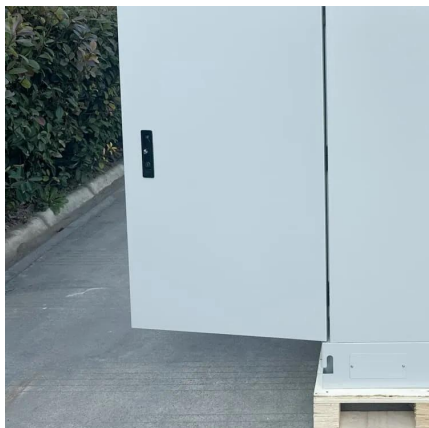
[Request Quote](#)



## [How to Balance Lithium Batteries in Parallel](#)

This process is essential when multiple battery packs are used together in series or parallel configurations. Keeping the battery packs ...

[Request Quote](#)





## How Series and Parallel Cell Arrangements Shape Li-Ion Battery Pack

The configuration of lithium-ion battery packs, particularly the total number of cells connected in series and parallel, has a great impact on the performance, thermal ...

[Request Quote](#)



## Ultimate Guide of LiFePO4 Lithium Batteries in Series & Parallel

Unlock the ultimate guide to using LiFePO4 lithium batteries in series and parallel. Learn configurations, benefits, and tips for optimal performance!

[Request Quote](#)

## Batteries in Series vs Parallel: Which is Better?

Connecting batteries in series or parallel could be the solution. But when you're trying to decide to connect your batteries in series vs. parallel, which is better? ...

[Request Quote](#)



## How To Connect Batteries In Series and Parallel

Connecting batteries in series increases the voltage of a battery pack, but the AH rating (also known as Amp Hours) remains the same. To ...

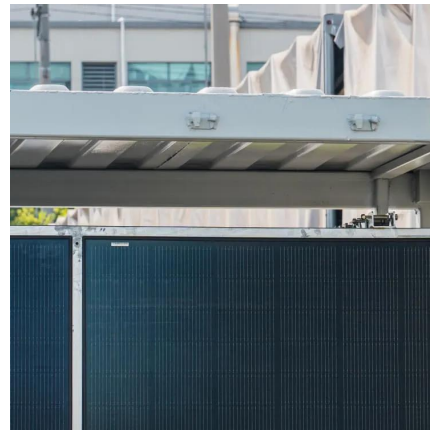
[Request Quote](#)



## [A deep analysis of lithium battery in series and parallel](#)

When selecting between battery in series and parallel connections in practical applications, several important factors must be considered. Ensure that the ...

[Request Quote](#)



## [How to Wire 12V Batteries in Series & Parallel \(w/ ...](#)

Learn how to wire batteries in series, parallel, and series-parallel with our step-by-step tutorial. Increase your battery voltage and amp hour ...

[Request Quote](#)



## [EV battery : serie vs. parallel cells and modules](#)

Challenges in setups with parallel cells / modules and packs in EV conversions. Do's and don'ts for more battery capacity (kWh) explained. Don't ...

[Request Quote](#)





### [A deep analysis of lithium battery in series and parallel](#)

When selecting between battery in series and parallel connections in practical applications, several important factors must be considered. Ensure that the selected batteries have ...

[Request Quote](#)

## **Microsoft Word**

Figure 12 again shows two 12 volt chargers connected to a series / parallel battery pack. But this battery pack is configured like example 2 in the previous section.

[Request Quote](#)



### [Lithium Series, Parallel and Series and Parallel](#)

Unlock the ultimate guide to using LiFePO4 lithium batteries in series and parallel. Learn configurations, benefits, and tips for optimal performance!

[Request Quote](#)



### [Lithium Battery Series & Parallel Operation , Fact Sheets](#)

Battery packs are designed by connecting multiple cells in series; each cell adds its voltage to the battery's terminal voltage. Figure 1 below shows a typical EarthX 13.2V LiFePO4 starter ...

[Request Quote](#)



### [Batteries in Series vs Parallel: Which is Better?](#)

Connecting batteries in series or parallel could be the solution. But when you're trying to decide to connect your batteries in series vs. parallel, which is better? Both methods increase total ...

[Request Quote](#)



### [How to Calculate the Number of Lithium Batteries in ...](#)

Lithium Batteries PACK Lithium battery PACK refers to the processing, assembly and packaging of lithium battery packs. The process of assembling lithium ...

[Request Quote](#)



### [How To Connect Batteries In Series and Parallel](#)

Connecting batteries in series increases the voltage of a battery pack, but the AH rating (also known as Amp Hours) remains the same. To connect batteries in a series, a ...

[Request Quote](#)





## [Batteries and Chargers Connected in Series and Parallel](#)

Learn how to connect batteries in series and parallel for different voltage and amp-hour capacities. Battery Tender® offers detailed instructions and diagrams for safely charging and configuring ...

[Request Quote](#)



## [Lithium Battery Series & Parallel Operation , Fact Sheets](#)

Check out our fact information sheet on the Lithium Battery Series and Parallel Operation. Get a breakdown of the basics, BMS, Parallel Operation and more!

[Request Quote](#)

## [Everything About Lithium Battery Series & Parallel](#)

Series connection is the most common method to make the battery pack reach the required operating voltage. Series connection is the best choice when you need more voltage ...

[Request Quote](#)



## **Can You Link Battery Packs? Understanding Series Vs. Parallel**

When deciding between series and parallel connections for battery packs, consider factors like voltage, capacity, and application requirements. Each connection type has distinct ...

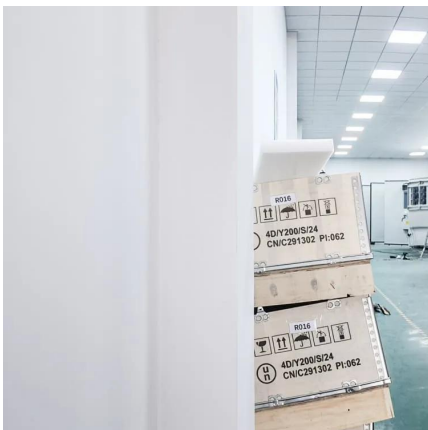
[Request Quote](#)



## [How to Connect Lithium Batteries in Series and Parallel?](#)

In this article, we'll explore the basics and provide detailed, step-by-step instructions on how to connect lithium batteries in series, parallel, and ...

[Request Quote](#)



## **How to Effectively Connect Batteries in Series and Parallel?**

What Is the Difference Between Series and Parallel Battery Connections? Series connections increase voltage by adding battery voltages together, while parallel connections ...

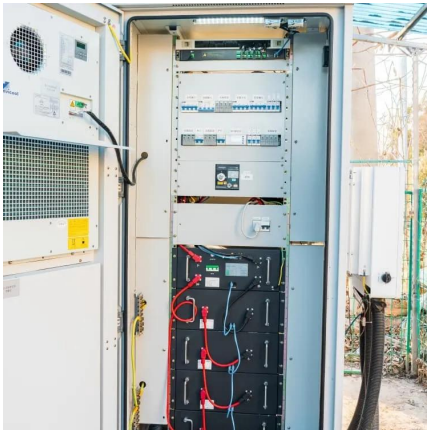
[Request Quote](#)

## [Series vs Parallel Battery Wiring: Key Differences, ...](#)

When using multiple batteries in a project, you have two primary wiring configurations--series and parallel. Each has distinct advantages ...

[Request Quote](#)





### [Lithium Series, Parallel and Series and Parallel](#)

Connecting multiple lithium batteries into a string of batteries allows us to build a battery bank with the potential to operate at an increased voltage, or with increased capacity and runtime, or both.

[Request Quote](#)

### **How should I connect multiple Lithium Polymer battery packs in parallel?**

I was thinking of connecting four external USB battery packs like these in parallel, as they output a nice regulated 5V and are easy to charge. But I know lithium chemistries are ...

[Request Quote](#)



## **Contact Us**

---

For catalog requests, pricing, or partnerships, please visit:  
<https://www.espaciovet.es>