

5G Base Station Power Consumption Equipment





Overview

In this post, we explore the energy saving features of 5G New Radio and how this enables operators to build denser networks, meet performance demands and maintain low 5G energy consumption.



5G Base Station Power Consumption Equipment



[A technical look at 5G energy consumption and performance](#)

In this post, we explore the energy saving features of 5G New Radio and how this enables operators to build denser networks, meet performance demands and maintain low 5G ...

[Request Quote](#)

ZTE Hibernation in 5G Base Stations

Further reducing power consumption and scaling these power saving solutions to all sites are key to addressing energy use and emissions from mobile ...

[Request Quote](#)



Why does 5g base station consume so much power and how to ...

5G base stations use high power consumption and high RF signals, which require more signal processing for digital and electromechanical units, and also put greater pressure ...

[Request Quote](#)

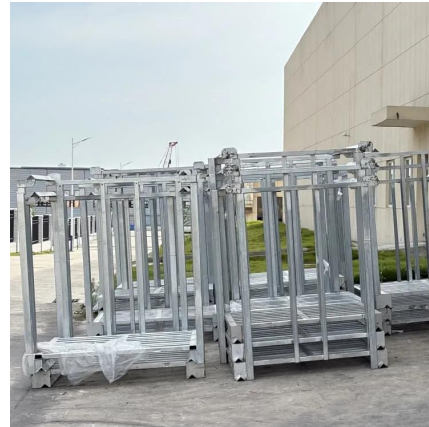
[5G Base Stations: The Energy Consumption Challenge](#)

Amongst these challenges, the most notable one is the energy consumption of a 5G base station



due to the implementation of the massive MIMO technology and the level of network ...

[Request Quote](#)



[Network energy consumption modeling and performance](#)

5G - by design the most energy efficient cellular generation to date - evolves further with new features and solutions to further improve energy performance.

[Request Quote](#)



Low-Carbon Sustainable Development of 5G Base Stations in China

Goncalves et al. (2020) explored carbon neutrality evaluation of 5G base stations from the perspective of network structure and carbon sequestration. Despite the growing ...

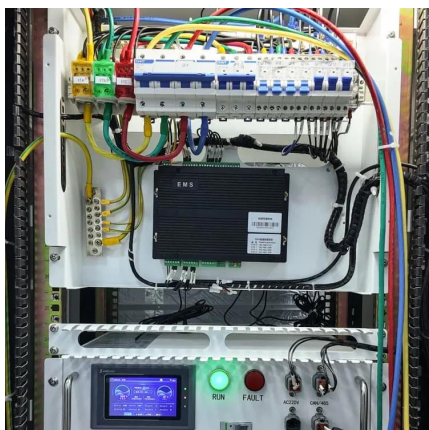
[Request Quote](#)



Comparison of Power Consumption Models for 5G Cellular Network Base

Power consumption models for base stations are briefly discussed as part of the development of a model for life cycle assessment. An overview of relevant base station power ...

[Request Quote](#)





5G power consumption is 2.5 to 3 times of 4G

The power consumption of a 5G single station is 2.5 to 3.5 times that of a 4G single station due to AAU power consumption, the current full load ...

[Request Quote](#)



Small Cells, Big Impact: Designing Power Solutions for 5G ...

What are small cells? Telecommunications equipment manufacturers have taken traditional macro radio designs and shrunk them down into what's called a small cell. Small cells are smaller ...

[Request Quote](#)

5G Base Station

The main energy consumption of 5G base stations is concentrated in the four parts of base station, transmission, power supply and computer room air conditioner, and the ...

[Request Quote](#)



Why does 5g base station consume so much power ...

5G base stations use high power consumption and high RF signals, which require more signal processing for digital and electromechanical units, ...

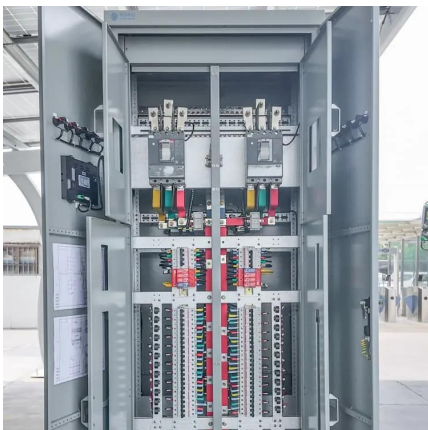
[Request Quote](#)



5G Base Station

The main energy consumption of 5G base stations is concentrated in the four parts of base station, transmission, power supply and computer ...

[Request Quote](#)



5G Technology Metrics Explained: Base Station, Uplink, and User

Explore in-depth technology metrics for 5G systems, comparing key specifications across base stations, uplink CPEs, and user devices to understand network design and ...

[Request Quote](#)

Hybrid Control Strategy for 5G Base Station Virtual ...

With the rapid development of the digital new infrastructure industry, the energy demand for communication base stations in smart grid ...

[Request Quote](#)





Optimal energy-saving operation strategy of 5G base station with

To further explore the energy-saving potential of 5 G base stations, this paper proposes an energy-saving operation model for 5 G base stations that incorporates communication caching ...

[Request Quote](#)

Why does 5g base station consume so much power ...

The power consumption of the 5G base station mainly comes from the AU module processing and conversion and high power-consuming high ...

[Request Quote](#)



5G-oriented Site Evolution

The total site power consumption will triple. This creates new challenges in terms of AC input power distribution, DC output power distribution, battery backup, ...

[Request Quote](#)

Technical Requirements and Market Prospects of 5G Base Station ...

With the rapid development of 5G communication technology, global telecom operators are actively advancing 5G network construction. As a core component supporting ...

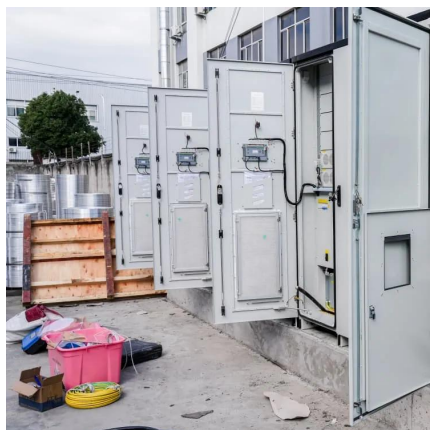
[Request Quote](#)



Size, weight, power, and heat affect 5G base station designs

Equipment providers must find the minimum power required to support radio functions during the quiescent period. PSU manufacturers must minimize power consumption ...

[Request Quote](#)



[Machine Learning and Analytical Power Consumption ...](#)

roduce a new power consumption model for 5G active antenna units (AAUs), the highest power consuming component of a BS1 and in turn of a mobile network. I. particular, we present an ...

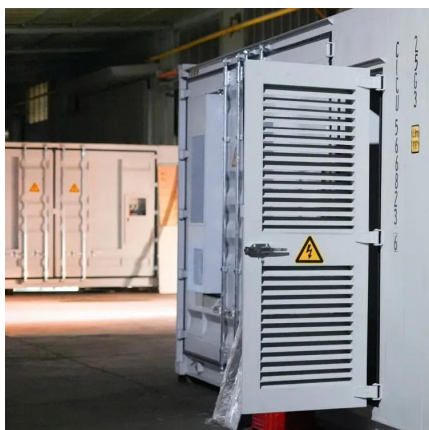
[Request Quote](#)



Modeling and aggregated control of large-scale 5G base stations ...

The limited penetration capability of millimeter waves necessitates the deployment of significantly more 5G base stations (the next generation Node B, gNB) than their 4G ...

[Request Quote](#)

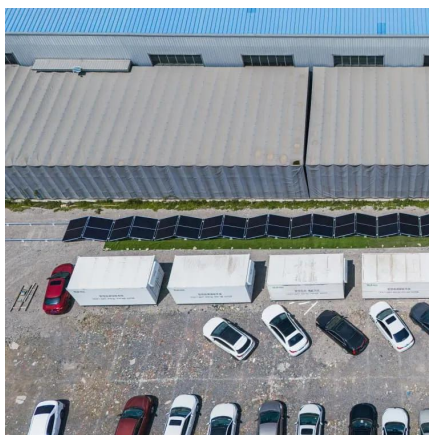




[How Much Power Does 5G Base Station Consume?](#)

Have you ever wondered how much energy our hyper-connected world is consuming? 5G base stations, the backbone of next-gen connectivity, now draw 3-4 times more power than their 4G ...

[Request Quote](#)



[Energy Consumption of 5G, Wireless Systems and ...](#)

Reports on the Increasing Energy Consumption of Wireless Systems and Digital Ecosystem The more we use wireless electronic devices, the more energy we ...

[Request Quote](#)

[Comparison of Power Consumption Models for 5G Cellular ...](#)

Power consumption models for base stations are briefly discussed as part of the development of a model for life cycle assessment. An overview of relevant base station power ...

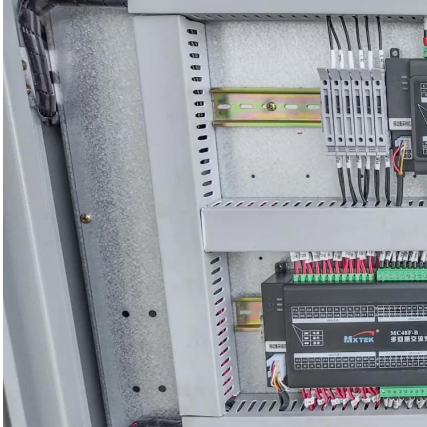
[Request Quote](#)



[What is the Power Consumption of a 5G Base Station?](#)

These 5G base stations consume about three times the power of the 4G stations. The main reason for this spike in power consumption is the addition of massive MIMO and ...

[Request Quote](#)



Improved Model of Base Station Power System for the ...

The widespread installation of 5G base stations has caused a notable surge in energy consumption, and a situation that conflicts with the ...

[Request Quote](#)



Contact Us

For catalog requests, pricing, or partnerships, please visit:
<https://www.espaciovet.es>