

# **5G base stations consume several times more power than 4G base stations**





## Overview

---

Are 5G base stations causing more energy consumption?

However, Li says 5G base stations are carrying five times the traffic as when equipped with only 4G, pushing up power consumption. The carrier is seeking subsidies from the Chinese government to help with the increased energy usage.

How much power does a 5G station use?

The power consumption of a single 5G station is 2.5 to 3.5 times higher than that of a single 4G station. The main factor behind this increase in 5G power consumption is the high power usage of the active antenna unit (AAU). Under a full workload, a single station uses nearly 3700W.

Is 5G more energy efficient than 4G?

Although the absolute value of the power consumption of 5G base stations is increasing, their energy efficiency ratio is much lower than that of 4G stations. In other words, with the same power consumption, the network capacity of 5G will be as dozens of times larger than 4G, so the power consumption per bit is sharply reduced.

Does China Mobile have a 5G base station?

China Mobile has tried using lower cost deployments of MIMO antennas, specifically 32T32R and sometimes 8T8R rather than 64T64R, according to MTN. However, Li says 5G base stations are carrying five times the traffic as when equipped with only 4G, pushing up power consumption.

Will MIMO increase the energy consumption of 5G base stations?

As a result, there are many more hardware components per base station. Björnson believes this will probably increase the total energy consumption of 5G base stations compared to 4G. But as massive MIMO technology develops, its energy efficiency may also improve over time.



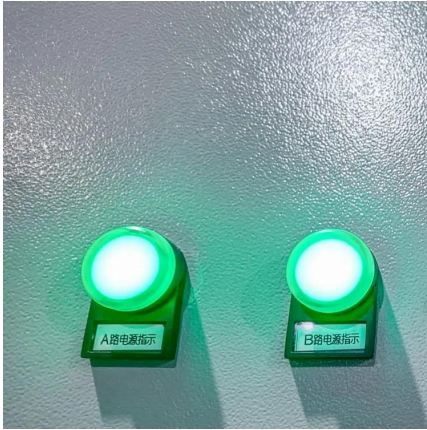
How many 5G base stations are there in a square kilometer?

Because no matter where you live in any community, there are densely packed base stations. There are 50 base stations in one square kilometer, and you can't avoid them. At that time, the street lamps, power poles and billboards you saw were probably 5G base stations in disguise. There is no way to avoid it.



## 5G base stations consume several times more power than 4G base s

---



### [5G 'inherently more energy consuming' than 4G](#)

"Each 5G site will need two to three times more power than the 4G-equivalent site, according to industry estimates. At the same time, as more ...

[Request Quote](#)

### [Why does 5g base station consume so much power ...](#)

In addition to other small modules that use electricity, the power consumption of a single 5G base station is generally around 3700 watts, ...

[Request Quote](#)



### [What is the Power Consumption of a 5G Base Station?](#)

These 5G base stations consume about three times the power of the 4G stations. The main reason for this spike in power consumption is the addition of massive MIMO and ...

[Request Quote](#)



### [How Much Power Does 5G Base Station Consume?](#)

Have you ever wondered how much energy our hyper-connected world is consuming? 5G base



stations, the backbone of next-gen connectivity, now draw 3-4 times more power than their 4G ...

[Request Quote](#)



### [What is a base station and how are 4G/5G base ...](#)

The architecture of the 5G network must enable sophisticated applications, which means the base stations design required must also be ...

[Request Quote](#)

### [5G base stations and the challenge of thermal ...](#)

If the device is unable to manage heat, its data handling performance is compromised. Any solution that addresses 5G heat dissipation ...

[Request Quote](#)



### **5G base stations use a lot more energy than 4G base stations: MTN**

A typical 5G base station consumes up to twice or more the power of a 4G base station, writes MTN Consulting Chief Analyst Matt Walker in a new report entitled " Operators ...

[Request Quote](#)





## Modeling and aggregated control of large-scale 5G base stations ...

In parallel, the deployment of 5th-generation mobile network (5G) infrastructures has rapidly expanded in recent years. The limited penetration capability of millimeter waves ...

[Request Quote](#)



## 5G Base Station Architecture

Non-Standalone (NSA) Base Stations use Multi-RAT Dual Connectivity (MR-DC) to provide user plane throughput across both the 4G and 5G air interfaces. This requires an eNode B and ...

[Request Quote](#)

## 5G Base Station Deployments; Open-RAN Competition & HUGE 5G BS Power

A typical 5G base station consumes up to twice or more the power of a 4G base station, writes MTN Consulting Chief Analyst Matt Walker in a new report entitled " Operators ...

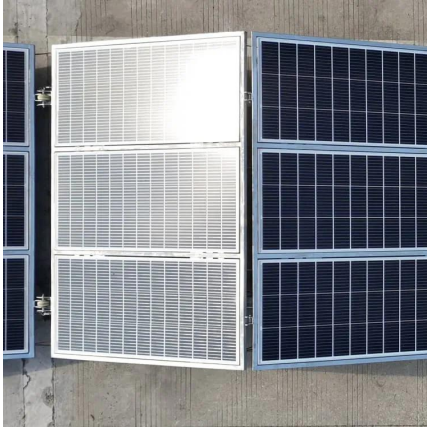
[Request Quote](#)



## 5G Base Stations: The Energy Consumption Challenge

Early deployments indicate that 5G base stations require 2.5-3.5 times more power compared to a 4G one. Moreover, C-band, i.e., 3.4 GHz to 4.2 GHz, is deemed as the most popular 5G ...

[Request Quote](#)



## Why does 5G base station consume so much power and how to ...

In addition to other small modules that use electricity, the power consumption of a single 5G base station is generally around 3700 watts, which is about three times that of 4G ...

[Request Quote](#)



## [5G Base Station Deployments: Open-RAN...](#)

A typical 5G base station consumes up to twice or more the power of a 4G base station, writes MTN Consulting Chief Analyst Matt Walker in a ...

[Request Quote](#)

## [Power Consumption: 5G Basestations Are Hungry, Hungry Hippos](#)

The increased power consumption of next-generation basestations may be one of the dirty little secrets of 5G, which might not be a secret much longer as operators roll out ...

[Request Quote](#)





## Energy-efficiency schemes for base stations in 5G heterogeneous

In today's 5G era, the energy efficiency (EE) of cellular base stations is crucial for sustainable communication. Recognizing this, Mobile Network Operators are actively prioritizing EE for ...

[Request Quote](#)

## [How Much Power Does 5G Base Station Consume?](#)

The Silent Energy Crisis in Mobile Networks Have you ever wondered how much energy our hyper-connected world is consuming? 5G base stations, the backbone of next-gen ...

[Request Quote](#)



## [Learn What a 5G Base Station Is and Why It's Important](#)

A 5G base station is the heart of the fifth-generation mobile network, enabling far higher speeds and lower latency, as well as new levels of connectivity. Referred to as gNodeB, 5G base ...

[Request Quote](#)



## Analysis of energy efficiency of small cell base station in 4G/5G

Base Stations (BSs) sleeping strategy is an efficient way to obtain the energy efficiency of cellular networks. To meet the increasing demand of high-data-rate for wireless ...

[Request Quote](#)





### [Improved Model of Base Station Power System for the ...](#)

However, the widespread deployment of 5G base stations has led to increased energy consumption. Individual 5G base stations require 3-4 ...

[Request Quote](#)



## **5G network deployment and the associated energy consumption ...**

The simulation results show that 700 MHz and 26 GHz will play an important role in 5G deployment in the UK, which allow base stations to meet short-term and long-term data ...

[Request Quote](#)



### [Size, weight, power, and heat affect 5G base station ...](#)

Engineers designing 5G base stations must contend with energy use, weight, size, and heat, which impact design decisions.

[Request Quote](#)





## 5G means Batteries. A lot of them

Since an outdoor 5G base station consumes roughly three times more power than a similarly sized 4G installation, mobile network operators will draw on ...

[Request Quote](#)



## [Front Line Data Study about 5G Power Consumption](#)

The power consumption of a single 5G station is 2.5 to 3.5 times higher than that of a single 4G station. The main factor behind this increase in 5G power consumption is the high power ...

[Request Quote](#)

## [5G 'inherently more energy consuming' than 4G](#)

"Each 5G site will need two to three times more power than the 4G-equivalent site, according to industry estimates. At the same time, as more services are provided at the edge, ...

[Request Quote](#)



## [Solar-Powered 5G Infrastructure \(2025\) . 8MSolar](#)

2 days ago· The rollout of 5G networks is one of the biggest technological leaps in modern telecommunications, but it comes with an enormous energy appetite. A single 5G base station ...

[Request Quote](#)



## The 5G Dilemma: More Base Stations, More Antennas--Less Energy?

According to recent research, the ultra-lean design that 5G networks are capable of will make it possible to put more components to sleep for a longer time, reducing energy ...

[Request Quote](#)



## Contact Us

---

For catalog requests, pricing, or partnerships, please visit:  
<https://www.espaciovet.es>