

5g base stations have low power consumption





Overview

In this post, we explore the energy saving features of 5G New Radio and how this enables operators to build denser networks, meet performance demands and maintain low 5G energy consumption.

Is 5G more energy efficient than 4G?

Although the absolute value of the power consumption of 5G base stations is increasing, their energy efficiency ratio is much lower than that of 4G stations. In other words, with the same power consumption, the network capacity of 5G will be as dozens of times larger than 4G, so the power consumption per bit is sharply reduced.

How much power does a 5G station use?

The power consumption of a single 5G station is 2.5 to 3.5 times higher than that of a single 4G station. The main factor behind this increase in 5G power consumption is the high power usage of the active antenna unit (AAU). Under a full workload, a single station uses nearly 3700W.

What is 5G base station?

1. Introduction 5G base station (BS), as an important electrical load, has been growing rapidly in the number and density to cope with the exponential growth of mobile data traffic . It is predicted that by 2025, there will be about 13.1 million BSs in the world, and the BS energy consumption will reach 200 billion kWh .

How does mobile data traffic affect the energy consumption of 5G base stations?

The explosive growth of mobile data traffic has resulted in a significant increase in the energy consumption of 5G base stations (BSs).

Does 5G New Radio save energy?

Emerging use cases and devices demand higher capacity from today's mobile networks, leading to increasingly dense network deployments. In this post, we



explore the energy saving features of 5G New Radio and how this enables operators to build denser networks, meet performance demands and maintain low 5G energy consumption.

Why does 5G use so much power?

The main factor behind this increase in 5G power consumption is the high power usage of the active antenna unit (AAU). Under a full workload, a single station uses nearly 3700W. This necessitates a number of updates to existing networks, such as more powerful supplies and increased performance output from supporting facilities.



5g base stations have low power consumption



[Why does 5g base station consume so much power ...](#)

5G base stations use high power consumption and high RF signals, which require more signal processing for digital and electromechanical units, ...

[Request Quote](#)

[Coordinated scheduling of 5G base station energy ...](#)

AAU is the most energy-consuming equipment in 5G base stations, accounting for up to 90% of their total energy consumption. Auxiliary ...

[Request Quote](#)



[Improved Model of Base Station Power System for the ...](#)

The widespread installation of 5G base stations has caused a notable surge in energy consumption, and a situation that conflicts with the ...

[Request Quote](#)



[A technical look at 5G energy consumption and performance](#)

In this post, we explore the energy saving features of 5G New Radio and how this enables



operators to build denser networks, meet performance demands and maintain low 5G ...

[Request Quote](#)



[Power Consumption of 4G and 5G Networks](#)

The fact of Sustainability in mobile networks starts with power reduction and meeting net-zero goals, and as we know wireless networks ...

[Request Quote](#)



Base station power control strategy in ultra-dense networks via ...

Within the context of 5G, Ultra-Dense Networks (UDNs) are regarded as an important network deployment strategy, employing a large number of low-power small cells to ...

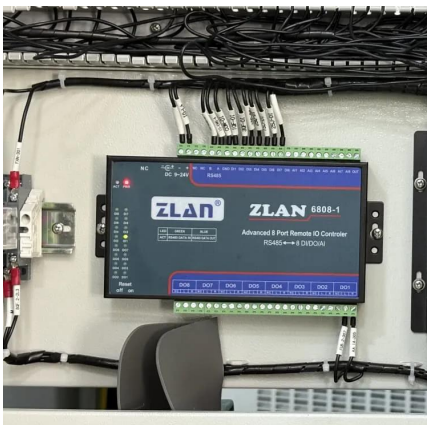
[Request Quote](#)



Energy-saving control strategy for ultra-dense network base stations

Aiming at the problem of mobile data traffic surge in 5G networks, this paper proposes an effective solution combining massive multiple-input multiple-output techniques ...

[Request Quote](#)





Macro Base Station

The 5G network is predicted to have the capability to connect one million devices per square kilometer, a tenfold increase compared to 4G technology. This potential increase in energy ...

[Request Quote](#)



[Carbon emissions of 5G mobile networks in China](#)

Here we develop a large-scale data-driven framework to quantitatively assess the carbon emissions of 5G mobile networks in China, where over 60% of the global 5G base ...

[Request Quote](#)

Multi-objective cooperative optimization of communication base station

The analysis results of the example show that participation in grid-side dispatching through the flexible response capability of 5G communication base stations can enhance the ...

[Request Quote](#)



Optimal configuration for photovoltaic storage system capacity in 5G

Base station operators deploy a large number of distributed photovoltaics to solve the problems of high energy consumption and high electricity costs of 5G base stations. In this ...

[Request Quote](#)



5G Base Station Growth: How Many Are Active? , PatentPC

Energy efficiency improvements in 5G base stations are projected to reduce power consumption by 15-20% per year One of the biggest challenges with 5G is its high power consumption, but ...

[Request Quote](#)



The power supply design considerations for 5G base ...

An integrated architecture reduces power consumption, which MTN Consulting estimates currently is about 5% to 6 % of opex. This percentage ...

[Request Quote](#)



Energy consumption optimization of 5G base stations considering

An energy consumption optimization strategy of 5G base stations (BSs) considering variable threshold sleep mechanism (ECOS-BS) is proposed, which includes the initial ...

[Request Quote](#)





[Network energy consumption modeling and performance](#)

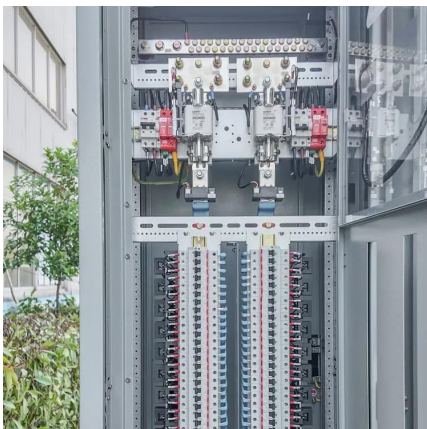
5G - by design the most energy efficient cellular generation to date - evolves further with new features and solutions to further improve energy performance.

[Request Quote](#)

The carbon footprint response to projected base stations of China's 5G

Both 5G base stations and CO 2 emissions are significantly lower than the previous estimates. We decomposed the CO 2 footprint of China's 5G networks and assessed ...

[Request Quote](#)



What is 5G Energy Consumption?

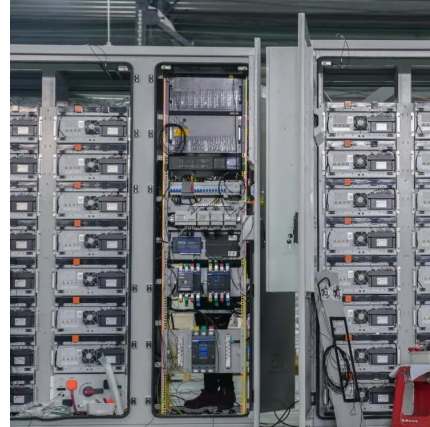
5G Base Station Power Consumption: With each base station carrying at least 5X more traffic and operating over more frequency bands, 5G base station power consumption is at least twice ...

[Request Quote](#)

[Comparison of Power Consumption Models for 5G Cellular ...](#)

This paper conducts a literature survey of relevant power consumption models for 5G cellular network base stations and provides a comparison of the models. It highlights commonly made ...

[Request Quote](#)



[Power consumption based on 5G communication](#)

This paper proposes a power control algorithm based on energy efficiency, which combines cell breathing technology and base station sleep technology to reduce base station energy ...

[Request Quote](#)



[5G Base Stations: The Energy Consumption Challenge](#)

Amongst these challenges, the most notable one is the energy consumption of a 5G base station due to the implementation of the massive MIMO technology and the level of network ...

[Request Quote](#)



[Power Consumption Modeling of 5G Multi-Carrier Base ...](#)

Deployed 5G networks have been estimated to be approximately four times more energy efficient than 4G ones.

[Request Quote](#)





What is the Power Consumption of a 5G Base Station?

These 5G base stations consume about three times the power of the 4G stations. The main reason for this spike in power consumption is the addition of massive MIMO and ...

[Request Quote](#)



Why does 5g base station consume so much power and how to ...

5G base stations use high power consumption and high RF signals, which require more signal processing for digital and electromechanical units, and also put greater pressure ...

[Request Quote](#)

Power consumption analysis of access network in 5G mobile ...

The architectural differences of these networks are highlighted and power consumption analytical models that characterize the energy consumption of radio resource ...

[Request Quote](#)



Front Line Data Study about 5G Power Consumption

The power consumption of a single 5G station is 2.5 to 3.5 times higher than that of a single 4G station. The main factor behind this increase in 5G power consumption is the high power ...

[Request Quote](#)



Contact Us

For catalog requests, pricing, or partnerships, please visit:
<https://www.espaciovet.es>