

Actual cycle times of lithium battery pack





Overview

The times of cycles of ordinary lithium batteries is 300~500 times, after which the capacity will decay to about 80% of the initial capacity. High-quality batteries (such as lithium iron phosphate batteries) can reach more than 2,000 cycles.



Actual cycle times of lithium battery pack



[How Many Times Can You Recharge a Lithium-Ion Battery?](#)

A lithium ion battery typically recharges 300 to 500 times. Each full discharge provides a certain energy capacity. Over its lifespan, the total power output ranges from 300 to ...

[Request Quote](#)

How Long do Lithium Batteries Last?

Lithium battery cycle life refers to the number of complete charge-discharge cycles a battery can undergo before its capacity diminishes to a predetermined level, typically 80% of ...

[Request Quote](#)



[A Complete Guide to Understanding Battery Packs](#)

Battery packs come in many types, each suited to different needs and applications. Whether it's for a smartphone, electric vehicle, or a portable ...

[Request Quote](#)



[How to calculate the "cycle times" of lithium batteries?](#)

The times of cycles of ordinary lithium batteries is 300~500 times, after which the capacity will



decay to about 80% of the initial capacity. High-quality batteries (such as lithium ...

[Request Quote](#)



[What are the cycle times and real life of the lifepo4 ...](#)

A long-life lead-acid battery has around 300 cycles, up to 500 cycles; the lifepo4 power battery has a cycle life of more than 2000 times. The lead-acid battery ...

[Request Quote](#)



[What Are The Cycle Times And Real Life Of Lithium Iron ...](#)

What Is The Real Life Of The Lithium Iron Phosphate Battery Pack? The cycle life of long-life lead-acid battery is about 300 times, and the maximum is 500 times.

[Request Quote](#)



[What is the number of cycles and real lifespan of ...](#)

In fact, the lifespan of lithium battery packs is almost the same. Whether it is Lifepo4 Battery or ternary lithium battery, the actual service life is related to ...

[Request Quote](#)

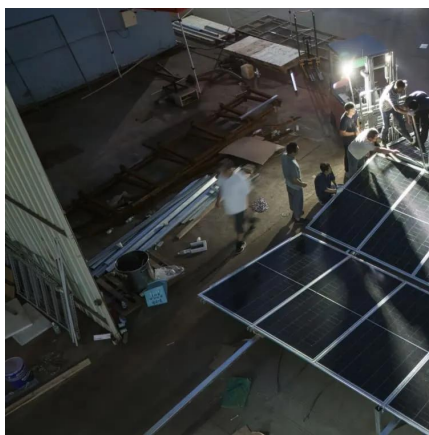




[Custom Industrial 12V 12Ah Lithium Battery Solutions](#)

What is a 12V 12Ah lithium ion battery pack and why is it the best solution for powering industrial equipment? A custom 12V 12Ah lithium ion battery is a high-efficiency, ...

[Request Quote](#)



Control strategy of an all-electric cruise ship based on cycle life

Based on the law of conservation of energy, a ship's mileage and remaining battery capacity model were established. The relationships between mileage, arrival time, and the ...

[Request Quote](#)

[Evaluation and prediction of lithium-ion battery pack ...](#)

Battery inconsistency problems will inevitably occur in the process of battery operation after forming a pack, and the consistency of the battery pack is of great significance ...

[Request Quote](#)



What is the number of cycles and real lifespan of Lifepo4 Battery?

In fact, the lifespan of lithium battery packs is almost the same. Whether it is Lifepo4 Battery or ternary lithium battery, the actual service life is related to the users usage and protection.

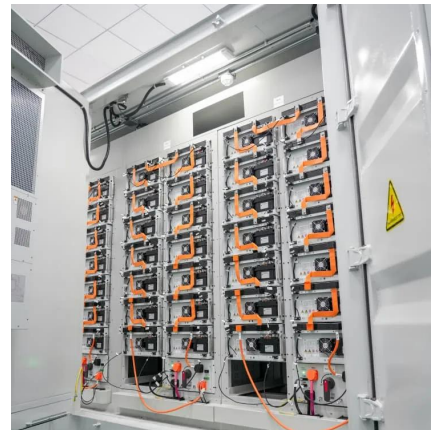
[Request Quote](#)



[The Comprehensive Guide to LiFePO4 Voltage Chart](#)

Are you considering LiFePO4 lithium batteries for your next project or application? Understanding the voltage characteristics of these batteries is crucial for their ...

[Request Quote](#)



[Battery Cycle Life Prediction Using Deep Learning](#)

Lithium-ion battery cycle life prediction using a physics-based modeling approach is very complex due to varying operating conditions and significant device ...

[Request Quote](#)

How many cycles and the real lifetime of LiFePO4 battery pack?- ...

The life of a lithium battery pack is about the same, whether it is lithium iron phosphate or a ternary lithium battery, the actual life is related to the user's use and protection.

[Request Quote](#)





[What You Need to Know About Lithium Battery Aging Tests](#)

Lithium battery aging step about lithium battery pack tests evaluate how battery packs degrade over time, ensuring their performance and longevity. These tests play a pivotal ...

[Request Quote](#)

[How Many Times Can You Recharge a Lithium-Ion Battery?](#)

Over its lifespan, the total power output ranges from 300 to 500 times that energy capacity. Keep in mind that capacity declines with each cycle, affecting the battery's longevity ...

[Request Quote](#)



[Real Lifespan Of Lithium Iron Phosphate Battery Packs](#)

The real-life lifespan of a LiFePO4 battery refers to the duration it can effectively operate before significant performance degradation occurs. This lifespan is influenced by ...

[Request Quote](#)



[What is the number of cycles and real lifespan of ...](#)

What is the real lifespan of the Lifepo4 Battery? The lifespan of lithium battery packs is almost the same. Whether it is a Lifepo4 Battery or a ternary lithium ...

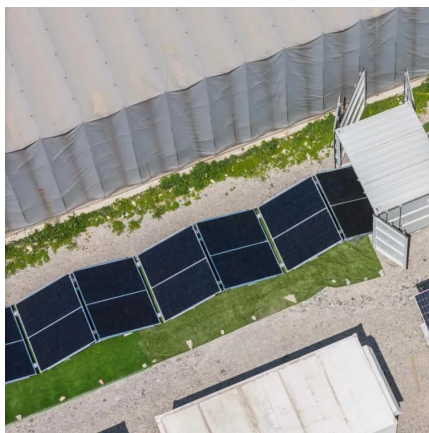
[Request Quote](#)



[What is the Life Span of a Lithium Battery? A Data ...](#)

In this evidence-based guide, as a professional lithium battery packs manufacturer, we'll explore the key factors impacting the lifespan of ...

[Request Quote](#)



[Are Lithium-Ion Batteries Rechargeable? How Many Times?](#)

This article unpacks the factors that influence lithium-ion rechargeable battery longevity and explores strategies to extend cycle life in real-world applications.

[Request Quote](#)



Lithium-Ion Battery Pack High-Power for E-Vehicle/Medical-Devices

Each pack is equipped with a high-quality Battery Management System (BMS) for real-time monitoring, protection (overcharge, short circuit, thermal), and cycle balancing.

[Request Quote](#)





Consistency evaluation of Lithium-ion battery packs in electric

During the service process of lithium-ion battery packs, there is inconsistency among the cells in the pack, resulting in a significant decline in battery performance and ...

[Request Quote](#)



What are the cycle times and real life of the lifepo4 battery pack?

A long-life lead-acid battery has around 300 cycles, up to 500 cycles; the lifepo4 power battery has a cycle life of more than 2000 times. The lead-acid battery has the longest service time of ...

[Request Quote](#)

How Load Current Affects a Lithium-Ion Battery's ...

The capacity must interpolate within the data set for any load profile not displayed, which approximates the real value. In addition, discharge ...

[Request Quote](#)



How many times is the lithium battery life Cycle?

In the market, there are two two types of lithium batteries on the market- NCM battery and LFP battery. NCM battery means NiCoMn ternary lithium battery. LFP battery ...

[Request Quote](#)



Contact Us

For catalog requests, pricing, or partnerships, please visit:
<https://www.espaciovet.es>