

Base station communication equipment installation requirements





Overview

Do base stations need a power supply?

Power Requirements: Base stations operate on 120V AC power rather than 12V DC, requiring either built-in power supplies or separate AC-to-DC converters. **Size and Ergonomics:** Designed for desktop use, these radios feature full-size controls, making operation more comfortable during extended sessions.

What are the components of a base station?

Power Supply: The power source provides the electrical energy to base station elements. It often features auxiliary power supply mechanisms that guarantee operation in case of lost or interrupted electricity, during blackouts. **Baseband Processor:** The baseband processor is responsible for the processing of the digital signals.

Can aircraft radios be used in ground based installations?

Avoid using aircraft radios in ground based installations as these radios are not normally acceptable to the FCC for ground installations. All transmitters must have a label on the front indicating their operating frequency. Radios must be located in secure areas or cabinets and should be protected from moisture and excessive heat.

How much does a base station CB cost?

HOA and Zoning: Check local regulations and homeowner association rules before installing visible antennas. How much does a complete base station CB setup cost?

Basic setups start around \$300-500, including radio, antenna, coax, and power supply. Mid-range systems run \$500-1000, while premium installations can exceed \$2000.

What is a base station?



What is Base Station?

A base station represents an access point for a wireless device to communicate within its coverage area. It usually connects the device to other networks or devices through a dedicated high bandwidth wire or fiber optic connection. Base stations typically have a transceiver, capable of sending and receiving wireless signals;.

What are the different types of base stations?

Some basic types of base stations are as follows: Macro-base stations are tall towers ranging from 50 to 200 feet in height, placed at strategic locations to provide maximum coverage in a given area. Those are equipped with large towers and antennas that transmit and receive radio signals from wireless devices.



Base station communication equipment installation requirements



Setting Up a Base Station CB Radio for Long Range Communication

Learn to set up a base station CB radio for long-range communication. Explore key components and expert tips for clear, reliable signals.

[Request Quote](#)

ETSI

Global System for Mobile communications (GSM); Base Station (BS) equipment; Harmonised Standard covering the essential requirements of article 3.2 of Directive 2014/53/EU The ...

[Request Quote](#)



Base Station Installation & Maintenance Test Solutions

To ensure stable communication between a base station and connect with the stability of mobile devices, it is necessary to check radio communication performance and eliminate radio wave ...

[Request Quote](#)



Emergency Responder Radio Coverage for New and Existing ...

Properly designed, installed, and maintained in-building emergency radio communication



enhancement systems provide a cost-effective and reliable tool for firefighter ...

[Request Quote](#)



Power Base Station

The RF requirements for the base station are specified in [86] and for the UE in [76]. The RF requirements are divided into transmitter and receiver characteristics. There are also ...

[Request Quote](#)



COMMUNICATION SITE BUILDING DESIGN AND ...

This chapter provides requirements and recommendations for designing communications site buildings, including equipment shelters and outdoor cabinets. The following topics are discussed:

[Request Quote](#)



Guide for the Selection of Communication Equipment for ...

A communication system is made up of devices that employ one of two communication methods (wireless or wired), different types of equipment (portable radios, mobile radios, base/fixed ...

[Request Quote](#)

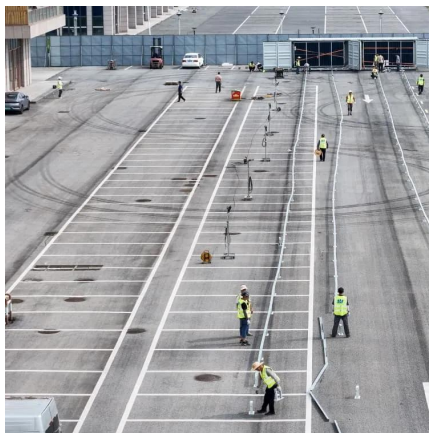




[Setting Up a Base Station CB Radio for Long Range ...](#)

Learn to set up a base station CB radio for long-range communication. Explore key components and expert tips for clear, reliable signals.

[Request Quote](#)



Base Stations

The present-day tele-space is incomplete without the base stations as these constitute an important part of the modern-day scheme of wireless communications. They are ...

[Request Quote](#)

Public Safety Primer

An ARCS is a wireless two-way building communication system for Fire Department use only that receives and transmits Fire Department portable radio frequencies within the building. An ...

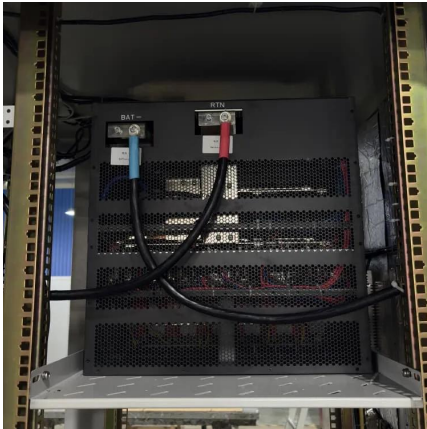
[Request Quote](#)



[VHF HF Base Station Installation20071209 PDF](#)

This document provides guidance on installing VHF and HF base station radio equipment for a radio room. It describes the recommended equipment, including Motorola ...

[Request Quote](#)



DHA 27 32 43 Radio Communications Equipment

Note: A typical Radio Communications System consists of a base station, handheld portable radios, vehicle units, antennas, power supplies, controllers, electrical panels, computers, ...

[Request Quote](#)



Two-Way, In-Building Emergency Communications Systems

The section also details the installation of area of refuge communication systems and elevator emergency communication systems, emphasizing the need for reliable, hands-free ...

[Request Quote](#)

Process of Installing a Base Transceiver Station (BTS) ...

Installing a Base Transceiver Station (BTS) is a critical step in building mobile communication networks. Here's a step-by-step guide to the ...

[Request Quote](#)





[Vhf Air/ground Radio Installation Guidelines ...](#)

This document is only an introduction and overview of the requirements that must be met in order to install VHF air/ ground radio stations at airports in a proper, acceptable and legal manner. ...

[Request Quote](#)

[Process of Installing a Base Transceiver Station \(BTS\)](#)

Installing a Base Transceiver Station (BTS) is a critical step in building mobile communication networks. Here's a step-by-step guide to the process:

[Request Quote](#)



[Radio Frequency RF Equipment Installation Checklist](#)

This article is about Radio Frequency RF Equipment Installation Checklist and Commissioning of Communications Systems as per International Codes and standards.

[Request Quote](#)

[DHA 27 32 43 Radio Communications Equipment](#)

Note: A typical Radio Communications System consists of a base station, handheld portable radios, vehicle units, antennas, power supplies, controllers, electrical panels, computers, ...

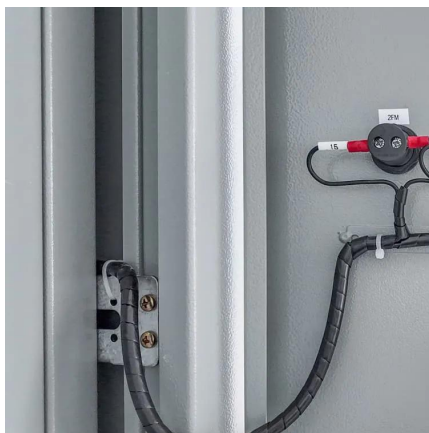
[Request Quote](#)



Microsoft Word

In addition, aircraft antennas normally used for operational control communications are mounted on the aircraft belly making communications difficult when the aircraft is parked at the gate ...

[Request Quote](#)



[How to Set Up a Base Station CB System: A ...](#)

This guide will walk you through the basic understanding of Base Station CB System, how to install them and how to do that right

[Request Quote](#)



How to Set Up a Base Station CB System: A Complete Installation ...

This guide will walk you through the basic understanding of Base Station CB System, how to install them and how to do that right

[Request Quote](#)





[ICTRFN405 Install radio communications base station ...](#)

This unit describes the skill and knowledge required to operate transmitters, receivers, feedline, multicoupling, data and voice equipment to connect a station in the very high frequency (VHF), ...

[Request Quote](#)



[Quick guide: components for 5G base stations and antennas](#)

Base stations A 5G network base-station connects other wireless devices to a central hub. A look at 5G base-station architecture includes various equipment, such as a 5G ...

[Request Quote](#)

Basestation

A base station is a standalone wireless communication system and is used to communicate as part of wireless telephone system such as GSM or CDMA cell sites. Base stations need to ...

[Request Quote](#)



[VHF HF Base Station Installation20071209 PDF](#)

This document provides guidance on installing VHF and HF base station radio equipment for a radio room. It describes the recommended ...

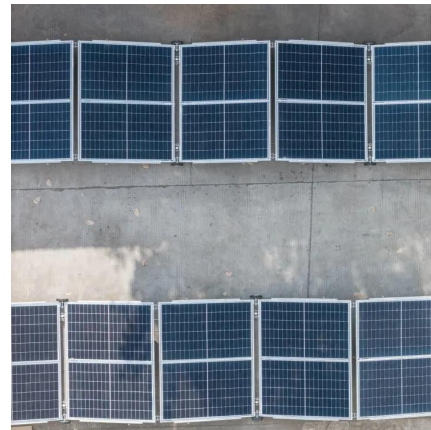
[Request Quote](#)



Base Stations

The present-day tele-space is incomplete without the base stations as these constitute an important part of the modern-day scheme of wireless ...

[Request Quote](#)



Technical Requirements and Market Prospects of 5G Base Station ...

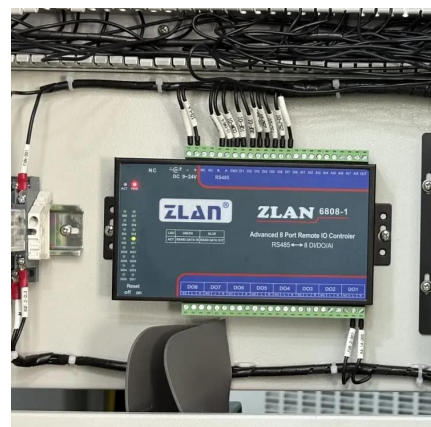
With the rapid development of 5G communication technology, global telecom operators are actively advancing 5G network construction. As a core component supporting ...

[Request Quote](#)

eCFR :: 47 CFR Part 90 Subpart N -

Subpart N--Operating Requirements § 90.401 Scope. The subpart prescribes general operating requirements for stations licensed under this part. This includes station operating procedures, ...

[Request Quote](#)





Contact Us

For catalog requests, pricing, or partnerships, please visit:
<https://www.espaciovet.es>