

Battery cabinet installation distance





Overview

According to NFPA 855, individual energy storage system units should generally be separated by at least three feet, unless the manufacturer has conducted large-scale fire testing (part of UL 9540A) to prove a smaller distance is safe. This prevents a fault in one unit from spreading to another. How much space do you need for a battery system?

Spaces about battery systems shall comply with 110.26. Working space shall be measured from the edge of the battery cabinet, racks, or trays. For battery racks, there shall be a minimum clearance of 25 mm (1 in.) between a cell container and any wall or structure on the side not requiring access for maintenance.

How far apart should IQ batteries be stacked?

Enphase IQ Battery 3, 3T, 10, and 10T test was conducted at the manufacturers recommended mounting distances with a minimum of 6" between vertically stacked units, 1" horizontally between IQ Battery 3/3T, and 6" clearance on the sides for IQ Battery 10/10T. The IQ Battery datasheets detail that they have been certified to UL9540A.

How much space is required between IQ batteries?

The following diagrams illustrate the minimum amount of space required between each IQ Battery. The minimum space for non-battery Enphase equipment is 6" around all sides. For first-generation wall mounts that are not UL 9540A compliant. The IQ Battery 10T must be installed at least 3 ft from the ceiling.

What is the minimum clearance for a battery rack?

For battery racks, there shall be a minimum clearance of 25 mm (1 in.) between a cell container and any wall or structure on the side not requiring access for maintenance. Battery stands shall be permitted to contact adjacent walls or structures, provided that the battery shelf has a free air space for not less than 90 percent of its length.



What are the requirements for a battery location?

Battery locations shall conform to 480.9 (A), (B), and (C). (A) Ventilation. Provisions appropriate to the battery technology shall be made for sufficient diffusion and ventilation of gases from the battery, if present, to prevent the accumulation of an explosive mixture. (B) Live Parts. Guarding of live parts shall comply with 110.27.

How far from the ceiling should IQ battery 10T be installed?

The IQ Battery 10T must be installed at least 3 ft from the ceiling. The IQ Battery 10T must be installed at least 6 inches from the floor. This spacing is also permitted with IQ Battery 3T and 10T if the IQ Battery 10T is installed using second-generation wall mount parts that are UL 9540A compliant.



Battery cabinet installation distance



[Installation, connection and sizing of cables with UPS](#)

The capacity of the battery (C10) and the charging mode (Ib) The characteristics of the charger The efficiency of the inverter The current Ib is the current in the connection of the ...

[Request Quote](#)

480.9 Battery Locations.

Working space shall be measured from the edge of the battery cabinet, racks, or trays. For battery racks, there shall be a minimum clearance of 25 mm (1 in.) ...

[Request Quote](#)



Battery Cabinet

For a UPS system that does not ground the DC/Battery Circuit, isolation should be maintained between the chassis and any point in the battery circuit, to reduce the risk of electric shock ...

[Request Quote](#)

BC58 Battery Cabinet Installation, Operation, & Maintenance ...

Battery cabinets that are not supplied with an incorporated DC output disconnect device must



have an appropriate disconnect device provided external to the cabinet.

[Request Quote](#)



[-48 VDC Battery Cabinet Installation and User Manual ...](#)

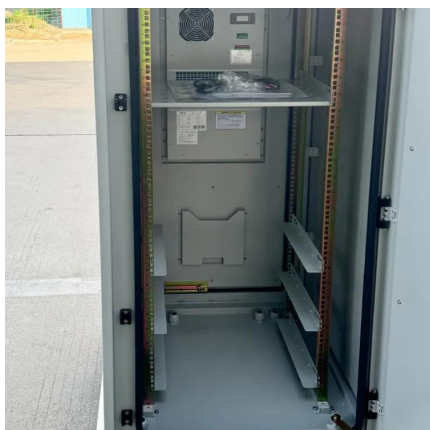
Refer to "Securing the Batteries Using the Battery Retention Strap" on page 21 for instructions on securing the batteries using the buckle strap provided with the battery cabinet.

[Request Quote](#)

Do Lithium Ion Batteries Require A Battery Room? Storage ...

Lithium-ion batteries need a battery room if their capacity exceeds 20 kWh, according to fire codes. NFPA 855 outlines ventilation and safety requirements.

[Request Quote](#)



[Eaton Samsung Gen 3 Battery Cabinet Installation and ...](#)

This manual describes how to install the Eaton Samsung Gen 3 battery cabinet and is divided into chapters. Read and understand the procedures described to ensure trouble-free installation ...

[Request Quote](#)



[IFC Mounting Requirements for IQ Battery Systems](#)

The UL 9540A testing shows that the manufacturers installation and spacing recommendations included in these products' Quick Installation Guides (QIG) are adequate ...

[Request Quote](#)



[Samsung UL9540A Lithium-ion Battery Energy Storage ...](#)

Overview The Samsung SDI 128S and 136S energy storage systems for data center application are the first lithium-ion battery cabinets to fulfill the rack-level safety standards of the UL9540A ...

[Request Quote](#)



[Installation Procedure for UPS for External Batteries](#)

NOTE: The distance between the modular battery cabinet (s) and the UPS must not exceed 100 m. Contact Schneider Electric for installations with a longer distance.

[Request Quote](#)



2018 Title Contents

Abstract Changes in requirements to meet battery room compliance can be a challenge. Local Authorities Having Jurisdictions often have varying requirements based on areas they serve. ...

[Request Quote](#)



[Battery Room Safety & Installation Guide](#)

The distance to the wall for racks and cabinets is ≥ 100 mm for a better placement of connections and better access for cleaning. Batteries must be assessable easy that service with normal ...

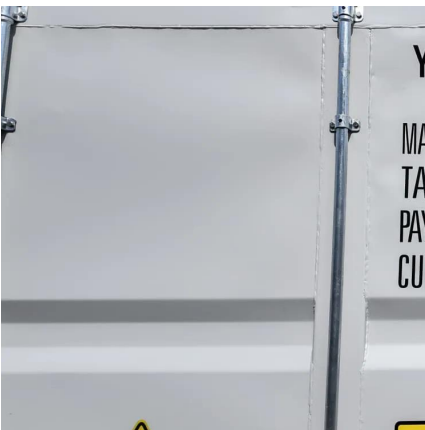
[Request Quote](#)



Checklist: Venting Clearance and Code Rules for Battery Cabinets

Stop battery overheating. This checklist details essential venting clearance and code rules for safe, compliant battery cabinet installation.

[Request Quote](#)



[-48 VDC Battery Cabinet Installation and User Manual ...](#)

Install the frame ground landing point adapter P/N 556872 to the left or right side of the battery cabinet, as shown in Figure 5. Figure 5: Installing P/N 556872 Frame Ground Landing Point ...

[Request Quote](#)





[Schneider Electric Galaxy VS Installation Manual , Manualzz](#)

Schneider Electric Galaxy VS is a modular battery cabinet that provides flexible and scalable battery backup solutions for critical applications. It offers up to 6 battery strings with a compact ...

[Request Quote](#)

[Battery Room Safety & Installation Guide](#)

The distance to the wall for racks and cabinets is ≥ 100 mm for a better placement of connections and better access for cleaning. Batteries must be assessable ...

[Request Quote](#)



480.9 Battery Locations.

Working space shall be measured from the edge of the battery cabinet, racks, or trays. For battery racks, there shall be a minimum clearance of 25 mm (1 in.) between a cell container and any ...

[Request Quote](#)

[To Reduce E-Battery Fires, NYC DOT Announces Property ...](#)

Additionally, each cabinet will need to comply with new size and installation requirements. NYC DOT published Sidewalk E-Bike Battery Swapping and Charging Cabinets ...

[Request Quote](#)



Installation Procedure

For moving or decommissioning the classic battery cabinet after installation has been completed, please see Decommission or Move the Classic Battery Cabinet to a New Location.

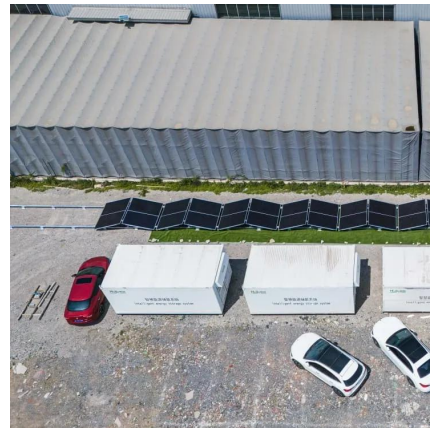
[Request Quote](#)



[UBC80 Battery Cabinet Installation, Operation.](#)

Review the battery system schematic that is located attached to the inside of a cabinet door to determine the number of batteries that need to be installed in the cabinet, the position of these ...

[Request Quote](#)



[Eaton Samsung Gen 3 Battery Cabinet Installation and ...](#)

Contact your local Authorities Having Jurisdiction (AHJ), to discuss the planned lithium battery installation, including cabinet placement and spacing, as well as total quantities of lithium in ...

[Request Quote](#)

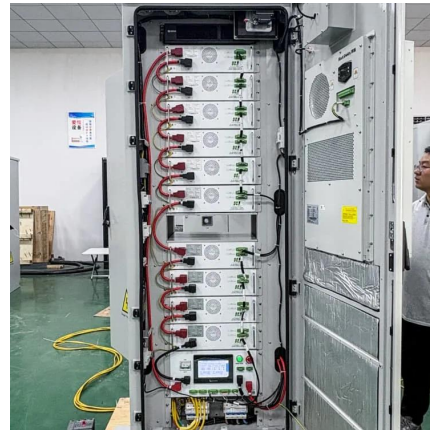




[Stationary UPS Sizing Calculations - Part Seven](#)

electrical engineering including electrical design courses, electrical calculations, electrical worksheets, electrical programs and electrical books

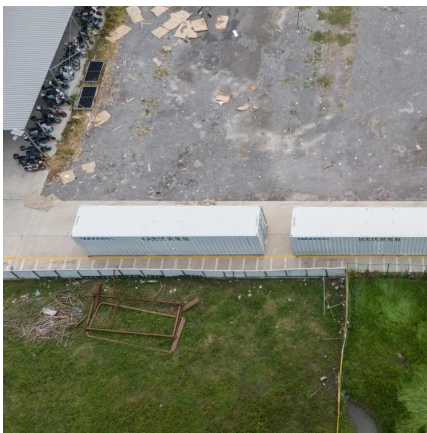
[Request Quote](#)



[Work Space about battery racks . Information by Electrical](#)

My question is on the interpretation the work space about a battery system. The passage below is out of the 2011 NEC. My question is the requirement for work space. We ...

[Request Quote](#)



EG4 BESS Spacing

The following document clarifies BESS (Battery Energy Storage System) spacing requirements for the EG4 WallMount batteries / rack mount six slot battery cabinet installations.

[Request Quote](#)



Contact Us

For catalog requests, pricing, or partnerships, please visit:
<https://www.espaciovet.es>