

Battery distance standard for communication base stations





Overview

What makes a telecom battery pack compatible with a base station?

Compatibility and Installation Voltage Compatibility: 48V is the standard voltage for telecom base stations, so the battery pack's output voltage must align with base station equipment requirements. Modular Design: A modular structure simplifies installation, maintenance, and scalability.

Which battery is best for telecom base station backup power?

Among various battery technologies, Lithium Iron Phosphate (LiFePO₄) batteries stand out as the ideal choice for telecom base station backup power due to their high safety, long lifespan, and excellent thermal stability.

Why do cellular base stations have backup batteries?

Abstract: Cellular base stations (BSs) are equipped with backup batteries to obtain the uninterruptible power supply (UPS) and maintain the power supply reliability. While maintaining the reliability, the backup batteries of 5G BSs have some spare capacity over time due to the traffic-sensitive characteristic of 5G BS electricity load.

How do you protect a telecom base station?

Backup power systems in telecom base stations often operate for extended periods, making thermal management critical. Key suggestions include: Cooling System: Install fans or heat sinks inside the battery pack to ensure efficient heat dissipation.

Can BS backup batteries be used in distribution networks?

This paper evaluates the dispatchable capacity of the BS backup batteries in distribution networks and illustrates how it can be utilized in power systems. The BS reliability model is first established considering potential distribution network interruptions and the effects of backup batteries.



What is a wide temperature range LiFePO4 battery?

This translates to lower replacement frequency and maintenance costs. Wide Temperature Range LiFePO4 batteries operate reliably in temperatures ranging from -20°C to 60°C, making them suitable for the diverse and often extreme environments of telecom base stations.



Battery distance standard for communication base stations



[CTECHI 5G Telecom Base Station Battery 48V 50Ah Power](#)

CTECHI 5G Telecom Base Station Battery 48V 50Ah Power System Solution UPS Backup Battery The CTECHI 50Ah 48V LiFePO4 Battery is a high-performance backup power solution ...

[Request Quote](#)

[What Powers Telecom Base Stations During Outages?](#)

Telecom batteries for base stations are backup power systems using valve-regulated lead-acid (VRLA) or lithium-ion batteries. They ensure uninterrupted connectivity ...

[Request Quote](#)



[Optimization of Communication Base Station Battery ...](#)

Therefore, the model and algorithm proposed in this work provide valuable application guidance for large-scale base station configuration ...

[Request Quote](#)

Evaluating the Dispatchable Capacity of Base Station Backup ...

Evaluating the Dispatchable Capacity of Base Station Backup Batteries in Distribution Networks



Published in: IEEE Transactions on Smart Grid (Volume: 12, Issue: 5, September 2021)

[Request Quote](#)



Understanding Backup Battery Requirements for Telecom Base Stations

Telecom base stations require reliable backup power to ensure uninterrupted communication services. Selecting the right backup battery is crucial for network stability and ...

[Request Quote](#)



Base Stations and Cell Towers: The Pillars of Mobile ...

Base stations and cell towers are critical components of cellular communication systems, serving as the infrastructure that supports seamless ...

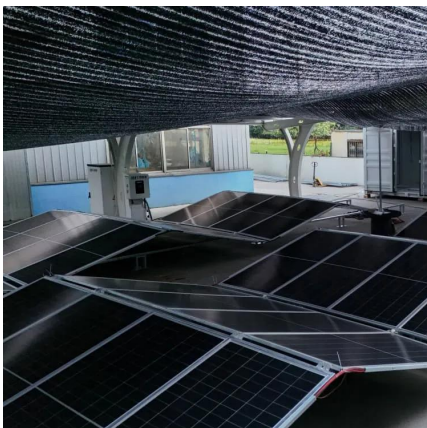
[Request Quote](#)



Telecom Base Station Backup Power Solution: Design ...

The battery pack should comply with international safety standards such as UL, CE, and IEC to ensure safe use in telecom base stations. ...

[Request Quote](#)

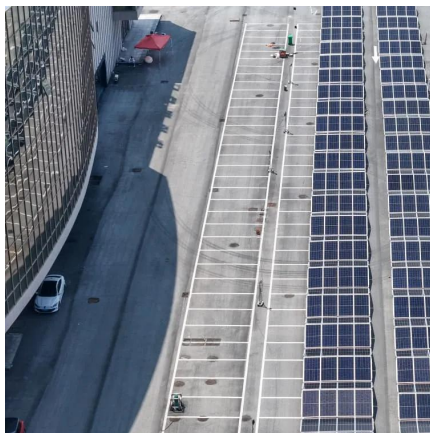




What is a Base Station?

China sets very strict standards for the power of communication base stations, far higher than the US and EU standards, only 40 microwatts ...

[Request Quote](#)



Selection and maintenance of batteries for communication base ...

Focused on the engineering applications of batteries in the communication stations, this paper introduces the selections, installations and maintenances of batteries for communication ...

[Request Quote](#)

Optimization of Communication Base Station Battery ...

Therefore, the model and algorithm proposed in this work provide valuable application guidance for large-scale base station configuration optimization of battery ...

[Request Quote](#)



UPS Batteries in Telecom Base Stations - leagend

When designing a UPS battery system for a telecom base station, engineers must address several critical factors to ensure reliability, efficiency, and longevity. The first step in ...

[Request Quote](#)



Communication base station

Communication base stations are one of the core nodes of modern communication networks and require uninterrupted power supply to maintain ...

[Request Quote](#)



?MANLY Battery?Lithium batteries for communication base stations ...

In general, as the demand for 5G communication base stations continues to increase, there will be considerable market space for lithium battery energy storage in the ...

[Request Quote](#)

Selection and maintenance of batteries for communication base stations

Focused on the engineering applications of batteries in the communication stations, this paper introduces the selections, installations and maintenances of batteries for communication ...

[Request Quote](#)





Telecom Base Station Backup Power Solution: Design Guide for ...

The battery pack should comply with international safety standards such as UL, CE, and IEC to ensure safe use in telecom base stations. Additionally, it should meet ...

[Request Quote](#)

Evaluating the Dispatchable Capacity of Base Station Backup Batteries

Evaluating the Dispatchable Capacity of Base Station Backup Batteries in Distribution Networks
Published in: IEEE Transactions on Smart Grid (Volume: 12, Issue: 5, September 2021)

[Request Quote](#)



Types and Applications of Mobile Communication ...

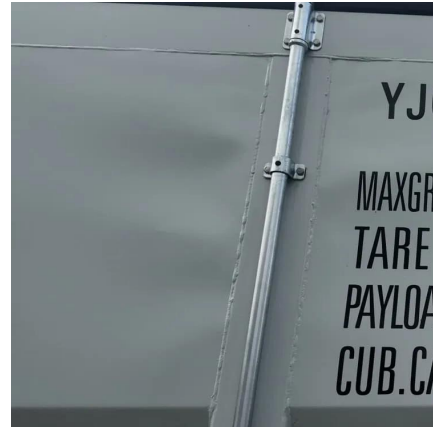
Mobile communication base station is a form of radio station, which refers to a radio transceiver station that transmits information between mobile ...

[Request Quote](#)

Coordination of Macro Base Stations for 5G Network ...

With the increasing amounts of terminal equipment with higher requirements of communication quality in the emerging fifth generation mobile ...

[Request Quote](#)



[Battery technology for communication base stations](#)

Based on the standard configuration of typical base stations, this article studies the expansion requirements of ...

[Request Quote](#)



[UPS Batteries in Telecom Base Stations - leagend](#)

When designing a UPS battery system for a telecom base station, engineers must address several critical factors to ensure reliability, efficiency, ...

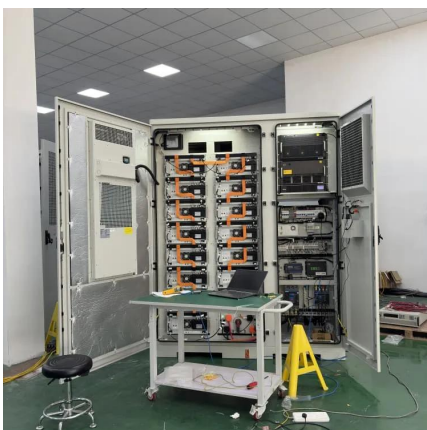
[Request Quote](#)



[Use of Batteries in the Telecommunications Industry](#)

ATIS Standards and guidelines address 5G, cybersecurity, network reliability, interoperability, sustainability, emergency services and more

[Request Quote](#)





TELECOM BACKUP POWER SYSTEMS

Lithium-ion batteries will gradually become the first choice for high-end backup power solutions. CellWatt base station lithium battery module is widely used in communication base stations ...

[Request Quote](#)



[Battery specifications for communication base stations](#)

Telecom battery backup systems of communication base stations have high requirements on reliability and stability, so batteries are generally used as backup power to ensure continuous ...

[Request Quote](#)

Basestation

A base station (BS) is defined as a fixed communication facility that manages radio resources for one or more base transceiver stations (BTSSs), facilitating radio channel setup, frequency ...

[Request Quote](#)



[Understanding Backup Battery Requirements for ...](#)

Telecom base stations require reliable backup power to ensure uninterrupted communication services. Selecting the right backup battery is ...

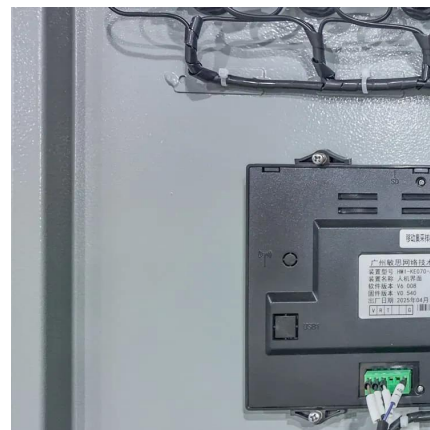
[Request Quote](#)



Energy-Efficient Base Stations , part of Green Communications

With the explosion of mobile Internet applications and the subsequent exponential increase of wireless data traffic, the energy consumption of cellular networks has rapidly caught the ...

[Request Quote](#)



[SmartRescue Base Stations \(2500 Series\)](#)

A code-compliant two-way communication system for rescue assistance requires a central control point to manage emergency assistance calls from call boxes. ...

[Request Quote](#)



Contact Us

For catalog requests, pricing, or partnerships, please visit:
<https://www.espaciovet.es>