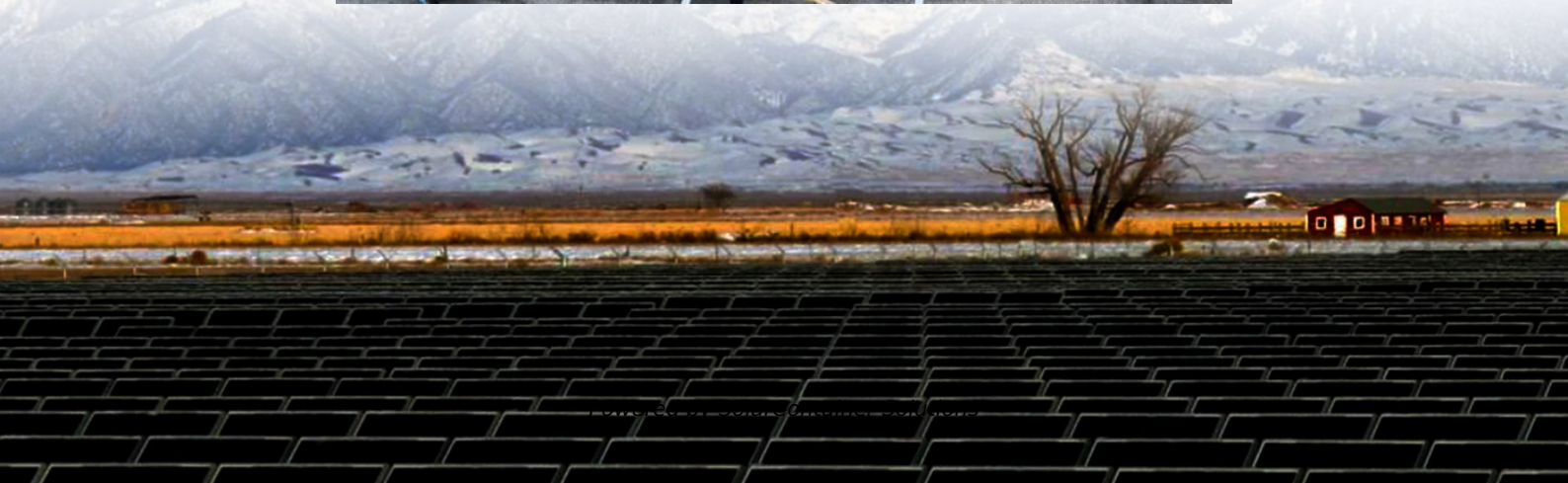
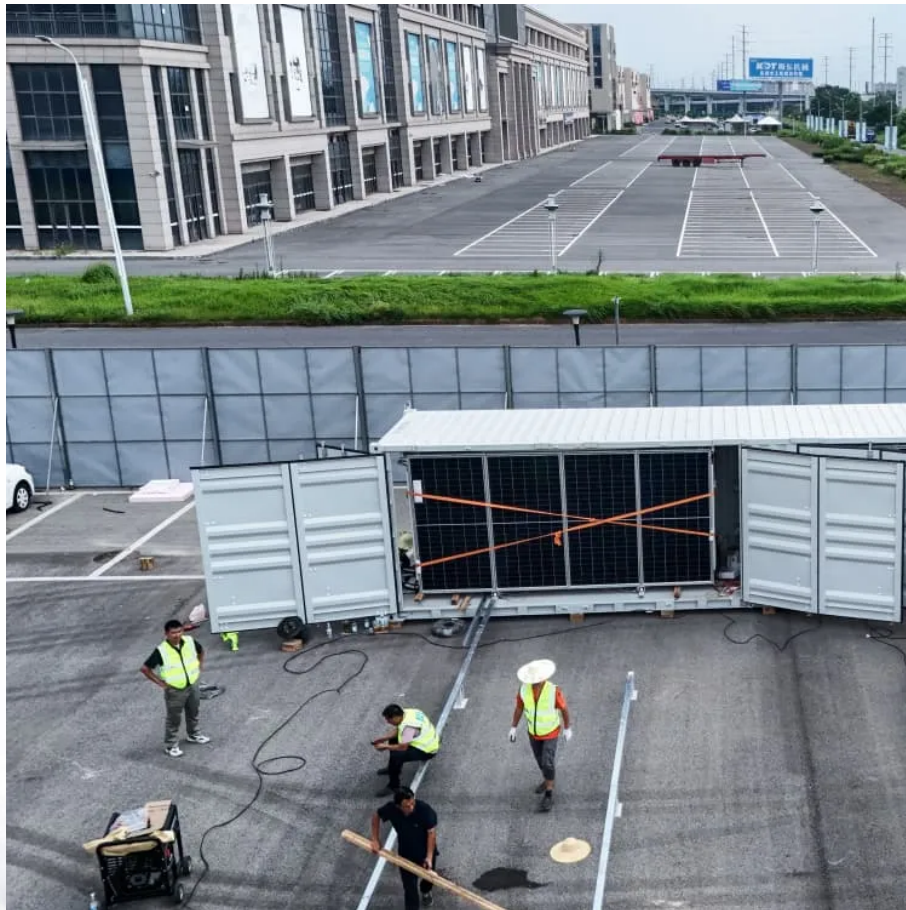


Blocking lightning protection application for communication base station inverter





Overview

How to protect against indirect lightning strikes on electrical networks?

Protection against indirect lightning strikes on electrical networks must be treated globally. ABB Soulé offers a complete range of lightning arresters adapted to this approach. They must be used in accordance with standard practice with a ground network optimized by earthing (low impedance).

Does a lightning arrester protect a telecommunication station?

Lightning protection (strikes with indirect effects) for telecommunication stations by lightning arresters, is applicable for all electrical networks. It is also compulsory to provide protection against lightning strikes with direct effects by placing a lightning arrester (near the top of the).

How should a lightning protection System (RBS) be formed?

The earthing network of an RBS should be formed by a ring loop surrounding the tower, equipment room and fence, at a minimum. The mean radius r_e of this ring loop should be not less than l_1 , as indicated in Figure 1 and this value depends on the lightning protection system (LPS) class and on the soil resistivity.

Who needs lightning protection?

or a large private subscriber / consumer (tertiary industry, others). Lightning protection (strikes with indirect effects) for telecommunication stations by lightning arresters, is applicable for all electrical networks.

What is a lightning protection system (LPS)?

3.2.3 lightning protection system (LPS): Complete system used to reduce physical damage due to lightning flashes to a structure. NOTE – An LPS consists of both external and internal lightning protection system.

Is a telecommunication tower impacted by lightning?



If the antenna is installed on the top of telecommunication tower, e.g., antenna positions 1 of Figure 29, it is considered to be impacted by or exposed to direct lightning strikes. Refer to [IEC 62305-3] for detail information about the protection angles and volume protected by an air termination system.



Blocking lightning protection application for communication base st



CN214798817U

The utility model discloses communication base station's lightning protection device is provided with the cooling structure on lightning arrester, and the device is provided with soil ...

[Request Quote](#)

[ITU-T Rec. K.112 \(07/2019\) Lightning protection, earthing ...](#)

The purpose of this Recommendation is to give detailed guidance on protection procedures, so that an engineer who is not a lightning protection expert can accomplish the design of the ...

[Request Quote](#)



CN212695449U

The utility model discloses a 5G communication base station's lightning-arrest equipment, including lightning rod, roof, the lantern ring and lightning-arrest net, the bottom fixedly ...

[Request Quote](#)

Simulation Research on Current Distribution Characteristics of ...

Therefore, the research on the lightning current distribution characteristics of the mobile



communication base station has important theoretical significance and engineering ...

[Request Quote](#)



[Lightning protection for Telecommunication Stations](#)

Protection against indirect lightning strikes on electrical networks must be treated globally. ABB Soulé offers a complete range of lightning arresters adapted to this approach. They must be ...

[Request Quote](#)



Lightning protection solution for telecom communication base stations

The lightning arrester for the RuTian feeder is installed at the connection between the antenna and the feeder to prevent lightning from entering the main equipment of the base ...

[Request Quote](#)



[Table II from Simulation Research on Current Distribution](#)

TABLE II. EQUIVALENT PARAMETERS OF COMMUNICATION POLE SYSTEM - "Simulation Research on Current Distribution Characteristics of Pole Communication Base Station Based ...

[Request Quote](#)





Lightning protection solution for telecom communication base ...

The lightning arrester for the RuTian feeder is installed at the connection between the antenna and the feeder to prevent lightning from entering the main equipment of the base ...

[Request Quote](#)



[LIGHTNING PROTECTION SOLUTION FOR BASE STATION](#)

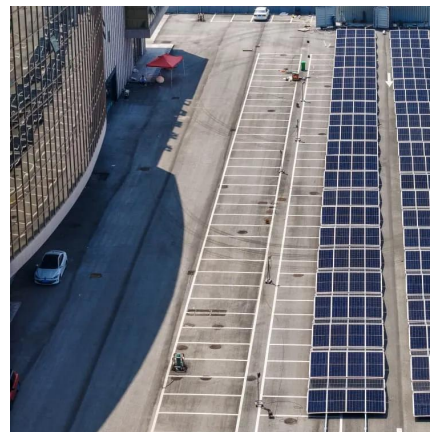
To properly protect the power line of a base station, the line entering the building should use a cable with metal cladding, buried underground. Both ends of the cladding should ...

[Request Quote](#)

[LIGHTNING PROTECTION SOLUTION FOR BASE ...](#)

To properly protect the power line of a base station, the line entering the building should use a cable with metal cladding, buried underground ...

[Request Quote](#)



[Lightning and Surge Protection for Solar PV Systems](#)

This application note follows the recommendations for lightning and surge protection set out in AS1768. There are two basic options to be considered before lightning and surge protection is ...

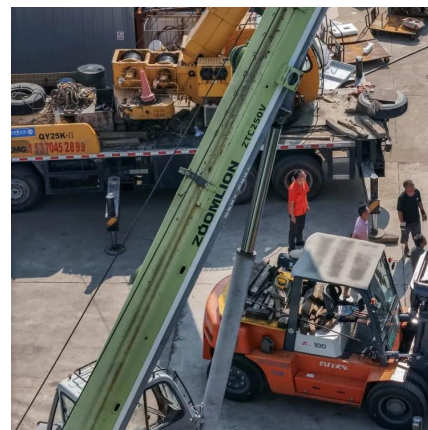
[Request Quote](#)



Lightning protection and grounding scheme for communication base station

The lightning protection grounding project should be implemented according to local conditions, and the base station grounding system should be designed according to the principle of ...

[Request Quote](#)



Lightning protection, earthing and surge protection of base

An effective lightning protection design for a telecommunication facility requires an integrated approach to a number of key factors: Protection against direct

[Request Quote](#)

Simulation Research on Current Distribution Characteristics of ...

Therefore, the research on the lightning current distribution characteristics of the mobile communication base station has important theoretical significance and engineering application ...

[Request Quote](#)





Communication Base Station (Independent Station) Lightning ...

This solution simplifies the complex base station ground network engineering by using the equipment method, and completely isolates the impact between lightning protection grounding, ...

[Request Quote](#)

CN213425417U

A communication base station, i.e. a public mobile communication base station, is a form of radio station, which refers to a radio transceiver station for information transmission between a ...

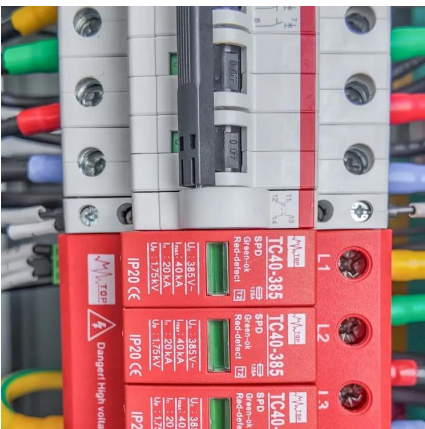
[Request Quote](#)



(PDF) Lightning protection design of solar photovoltaic ...

The necessities of lightning protection on the PV systems and its barrier, the need for different lightning protection system on PV systems as ...

[Request Quote](#)



Communication Base Station (Independent Station) Lightning Protection

This solution simplifies the complex base station ground network engineering by using the equipment method, and completely isolates the impact between lightning protection grounding, ...



[Request Quote](#)



[How Base Station to Be Protected From Lightning](#)

The building lightning protection grounding and indoor grounding are all led out from the public grounding network. At the same time, the protective grounding, logical ...

[Request Quote](#)



[15 important functions of solar inverter protection - ...](#)

Solar inverter is one of the essential core components in solar power generation applications. In addition to affecting the power generation of ...

[Request Quote](#)



Inverter Best Installation Practices to Minimize Lightning ...

Insulate the drain/shield wire that is not connected to protect against incidental contact with chassis or other live components. Connect the drain/shield wires from the RS485 cable with ...

[Request Quote](#)

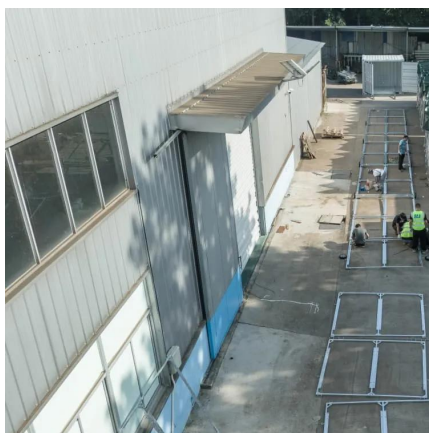




CN111987592B

The invention belongs to the technical field related to communication base stations, and particularly relates to lightning protection equipment for an outdoor communication base ...

[Request Quote](#)



[Lightning and Surge Protection for Communication Station](#)

Install lightning rods, grounding, surge protectors, shielding, and follow standards for effective communication station protection.

[Request Quote](#)

[Lightning protection design of grid connected ...](#)

Lightning protection is an indispensable part of the entire photovoltaic power station, which is related to the safe and normal operation ...

[Request Quote](#)



Lightning protection guide

The matched, safe and tested lightning protection systems from OBO Bettermann protect people, buildings and property. OBO can offer the right selection of products, depending on ...

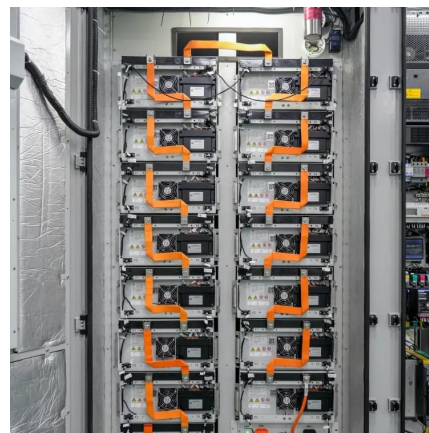
[Request Quote](#)



5G base station lightning protection scheme: key role and ...

The adoption of a 5G base station lightning protection solution with high-performance varistors as the core is the cornerstone of ensuring network infrastructure ...

[Request Quote](#)



Contact Us

For catalog requests, pricing, or partnerships, please visit:
<https://www.espaciovet.es>