

# **Boost module production outdoor power supply**





## Overview

---

What is xl6009 booster module ultra wide output voltage?

□Ultra Wide Input Output□The XL6009 Booster Module ultra-wide input voltage is 3V~32V, and the step up converter best working voltage range is 5~32V. The dc to dc boost converter Ultra-wide output voltage 5V~35V. Step-up boost circuit can work safely and reliable in -40°C~85°C range.

What are the features of a power supply module?

3. HD LCD DISPLAY: This Power supply module has an HD LCD display for clearer reading and can display multiple parameters at once, eliminating the need for frequent switching of the required parameters. 4. PRODUCT PARAMETERS: The input voltage of this adjustable voltage regulator is DC 5-30v and the output voltage is DC 0.6-30v.

How is a boost converter different from a buck converter?

The boost converter is different to the Buck Converter in that it's output voltage is equal to, or greater than its input voltage. However it is important to remember that, as power  $(P) = \text{voltage (V)} \times \text{current (I)}$ , if the output voltage is increased, the available output current must decrease.

What is the output power of CNC step-up step-down module?

Under the condition of natural heat dissipation, the output power is 35W, and under the condition of air cooling, the output power can reach 50W. 5. WIDE APPLICATION: CNC step-up step-down module has a variety of protection functions, can be widely used in the laboratory power supply, outdoor camping, electric scooters, golf carts, etc.

Why do I need a boost converter?

The answer to this problem is to use fewer batteries and to boost the available DC voltage to the required level by using a boost converter.



What is a tpsm81033 synchronous boost converter?

The TPSM81033 is a synchronous boost converter designed to operate from an input voltage supply range up to 5.5V with a 2A (typical) valley switch current limit. The TPSM81033 typically operates at a quasi-constant 2.4MHz frequency PWM at moderate-to-heavy load currents.



## Boost module production outdoor power supply

---



### [6PCS XL6009 Booster Step Up DC to DC Boost Converter ...](#)

The XL6009 module is a non-isolated step-up voltage converter featuring adjustable output voltage and new generation (XL6009E1 core chip) high-frequency (400KHZ) ...

[Request Quote](#)

### [DC-DC Power Supply Modules Basics Blog , LCSC Electronics](#)

DC-DC power supply modules are crucial in converting and regulating electrical energy in the electronics and power management industry.

[Request Quote](#)



### **Amazon : Boost Converter**

Boost voltage with precision using adjustable, high-efficiency boost converter modules. Suitable for a wide array of electronic projects and devices.

[Request Quote](#)

### [XY-SK35H 35W 4A CVCC Buck Boost Power Supply Module](#)

XY-SK35H 35W 4A CVCC Buck Boost Power Supply Module has a variety of protection





functions, can be widely used in the laboratory power supply, outdoor camping, electric scooters, golf ...

[Request Quote](#)



### [Boost Converter Circuit & Boost Converter Design](#)

Our team creates boost converter circuits that help increase voltage from input to output in 75W, 215W, and up to 600W PFC modules. Click here to learn more ...

[Request Quote](#)



### [XL6019 DC-DC 5A Adjustable Boost Power Supply ...](#)

Description DC to DC step up module based on the upgraded XL-Semi XL-6019, offering up to 5A switching current and conversion efficiency of up to 97% ...

[Request Quote](#)



### [Amazon : Professional 1000W Inverter Boost Module Board, ...](#)

Because the rectifier part of many switching power supply appliances is a normal rectifier tube to save costs, connecting it to the "high frequency AC output" will cause the ...

[Request Quote](#)





## [6PCS XL6009 Booster Step Up DC to DC Boost ...](#)

The XL6009 module is a non-isolated step-up voltage converter featuring adjustable output voltage and new generation (XL6009E1 core chip) ...

[Request Quote](#)



## **Buck-Boost Chip for Outdoor Power Supply Charting Growth ...**

The global market for buck-boost chips in outdoor power supplies is experiencing robust growth, driven by the increasing demand for portable and energy-efficient devices in ...

[Request Quote](#)

## [Boost Converter Module, 400W 12A DC-DC Step-up Boost ...](#)

About this item The input and output are designed with screw terminals for convenient wire connection and disconnection The boost converter module is of 2 heat sinks, ...

[Request Quote](#)



## [1000W 12V Boost Power Supply Module Outdoor Speaker ...](#)

- 1000W outdoor audio power supply, car amplifier power supply, 12V boost power supply.
- Input voltage is 8.6-16V, output:  $\pm 68V$ ,  $\pm 12V$ , independent  $+12V \times 2$ , with built-in voltage regulator ...

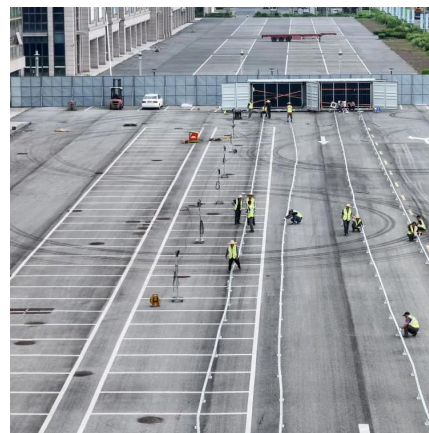
[Request Quote](#)



## The Boost Switching Power Supply

The boost switching power supply operates with a limited number of components, but each component plays an integral part in the device's overall operation. Each component for this ...

[Request Quote](#)



## Mobile power supply production, outdoor power supply, portable ...

The portable outdoor power supply capacity is defined as between 80Wh and 5000Wh, with a power range of 80W to 3000W. Provide power supply for various electrical equipment, ...

[Request Quote](#)



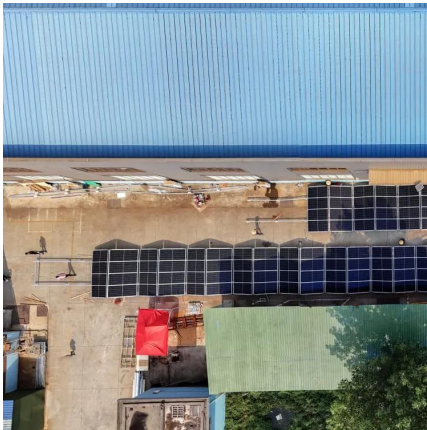
## [XY-SK35H 35W 4A CVCC Buck Boost Power Supply ...](#)

XY-SK35H 35W 4A CVCC Buck Boost Power Supply Module has a variety of protection functions, can be widely used in the laboratory power supply, ...

[Request Quote](#)







### **XY-SK35H 35W 4A CVCC Buck Boost Power Supply Module , DC-DC Buck Boost**

XY-SK35H 35W 4A CVCC Buck Boost Power Supply Module has a variety of protection functions, can be widely used in the laboratory power supply, outdoor camping, electric scooters, golf ...

[Request Quote](#)

### [Amazon : Professional 1000W Inverter Boost Module Board, ...](#)

Professional 1000W Inverter Boost Module Board, Inverter Boost Converter Transformer High Frequency Power DC 12V 24V to AC 18V 110V 200V 420V, Inverter Module ...

[Request Quote](#)



### **DC-DC Step Up Boost 4A**

This DC-DC Module is based on IC XL6009E1 which is a high-performance step-up switching current (BOOST) module. The module uses the second ...

[Request Quote](#)



### [Inverter Boost Module Board, Inverter Boost Module ...](#)

Features: The PCB board adopts military grade board, the size is 8 cm x 7.5 cm Long life, convenient and safe to use High energy efficiency, ...

[Request Quote](#)





### [TPSM81033 5.5V, 2A, 2.4MHz, Synchronous Boost Power ...](#)

The TPSM81033 is a synchronous boost module. The device provides a power supply solution for portable equipment and smart devices powered by batteries and other power supply.

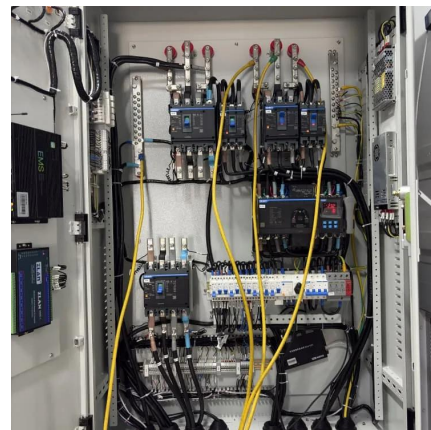
[Request Quote](#)



### **1000W 12V Boost Power Supply Module Outdoor Speaker Vehicle High Power**

- 1000W outdoor audio power supply, car amplifier power supply, 12V boost power supply.
- Input voltage is 8.6-16V, output:  $\pm 68V$ ,  $\pm 12V$ , independent  $+12V \times 2$ , with built-in voltage regulator ...

[Request Quote](#)



### **Boost Converters**

The answer to this problem is to use fewer batteries and to boost the available DC voltage to the required level by using a boost converter.

[Request Quote](#)





## [Boost Converter Circuit & Boost Converter Design , PPI](#)

Our team creates boost converter circuits that help increase voltage from input to output in 75W, 215W, and up to 600W PFC modules. Click here to learn more about our boost converter ...

[Request Quote](#)



## [Power Modules , Voltage Regulators, Boost/Buck Converters](#)

Power up your electronics projects with our selection of high-quality power modules. Our voltage regulators, buck converters, and other modules are designed to provide efficient and reliable ...

[Request Quote](#)

## **Picking the right boost/buck converter to power LEDs from 12 V**

...

I'm looking to run four 3 W high-intensity LEDs in a series circuit using a 12 V battery, for an outdoor lighting setup. My intention was to use an adjustable buck/boost ...

[Request Quote](#)



## [Adjustable DC-DC Buck Boost Converter by ICStation ...](#)

Under the condition of natural heat dissipation, the output power is 35W, and under the condition of air cooling, the output power can reach 50W. WIDE ...

[Request Quote](#)



### [Adafruit TPS65131 Split Power Supply Boost Converter](#)

Adafruit Industries, Unique & fun DIY electronics and kits Adafruit TPS65131 Split Power Supply Boost Converter [+6~15 / -6V~-15V] : ID 6280 - Need those ...

[Request Quote](#)



### [DIY Bench Power Supply : 13 Steps \(with Pictures\)](#)

Here, we are using the ZK-4KX DC-DC Buck Boost converter module, an adjustable regulated power supply module with a voltage range of 0.5-30V ...

[Request Quote](#)

## **Contact Us**

For catalog requests, pricing, or partnerships, please visit:  
<https://www.espaciovet.es>