

Can 12v use a 1300 inverter





Overview

Our batteries store power in DC (Current current) but most of our household appliances require AC (Alternating current) Our batteries come in different voltages (12,24, & 48v) But AC appliances requir.

What is a 12V DC power inverter?

This is where a power inverter comes in. Definition and Working Principle A 12V DC power inverter is a device that converts low-voltage direct current (DC) power from a 12V battery (such as a car battery or deep-cycle battery) into 120V alternating current (AC) power, making it suitable for household appliances and electronic devices.

Can a 12V battery power an inverter?

Here's the magic: by connecting your 12v battery to an inverter, you unlock the potential to power various devices, bringing a touch of home comfort to your off-grid adventures. But there's a catch – the amount of time your battery can provide power depends on several factors. That's what we'll explore in the next part!.

Which 12V power inverter is best?

For reliability and performance, Topbull 12V power inverters are highly recommended. Known for their robust design and superior efficiency, Topbull's inverters provide stable power for a wide range of applications. Here are three excellent options.

What is the runtime of a 12V battery with an inverter?

The runtime of a 12v battery with an inverter depends on battery capacity, device power consumption, inverter efficiency, battery health, discharge depth, and environmental conditions.

Are 12V inverters commonly used in RVs and solar power systems?

Yes, 12V inverters are commonly used in RVs and solar power systems. When choosing an inverter for these setups, ensure that it is compatible with your



battery bank and solar panel capacity. This ensures your system runs efficiently and can handle the load of various devices without issues.

What is a 12V car power inverter?

A 12V car power inverter is a must-have for road trips, mobile workstations, and emergency preparedness. It allows drivers and passengers to charge and use electronic devices directly from the vehicle's battery or cigarette lighter port. Devices Powered: Laptops, smartphones, car refrigerators, small power tools, portable gaming consoles.



Can 12v use a 1300 inverter



[What Will An Inverter Run & For How Long? \(With Calculator\)](#)

So I'm gonna explain to you guys in simple words about what you can run on your any size inverter and what are the key point to keep in mind. And also how long your inverter ...

[Request Quote](#)

How to Understand Inverter Run Time with a 12 Volt Battery: A

The run time depends on various factors, including battery capacity, load requirements, and inverter efficiency. This guide will help you calculate and optimize your inverter's performance.

[Request Quote](#)



Can a 12V Inverter Run a TV, Fridge, or Other Household Devices?

So, can a 12V Inverter run your TV, fridge, or other household gadgets? Absolutely--if you pick an inverter with enough wattage and surge capacity, maintain a healthy ...

[Request Quote](#)



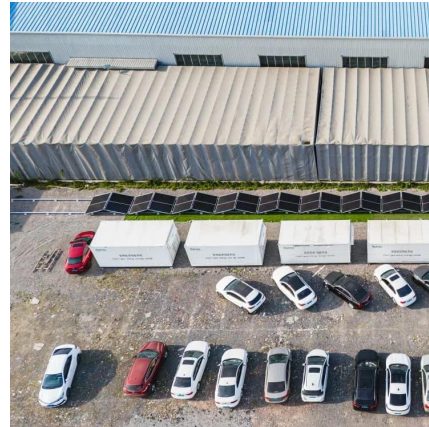
[Can 12V 130 Watts/7A Solar Panel power 500 Watts ...](#)

I had an inverter of 500 Watts that I use with my car batteries and recently purchased two



130w/7A solar panels that is yet to arrive. Is it a good ...

[Request Quote](#)



[Can you run AC with inverter turn on? , Forest River Forums](#)

All the inverter does is turn 12v battery power to 120v AC power. So unless you had a 2000w+ inverter and a bank of 10 deep cycle batteries, you can't run the a/c.

[Request Quote](#)

[What Inverter for induction cooktop? , Sprinter ...](#)

I can vouch for the GIANDEL Pure Sine Wave Power Inverter, I run a 2000w one for 7+ years, camping, near salt from beaches and ...

[Request Quote](#)



How Long Will A 12V Battery Last With an Inverter - Let's ...

But a crucial question lingers: how long will your 12v battery actually last when powering devices through an inverter? This blog post will be your guide to understanding how ...

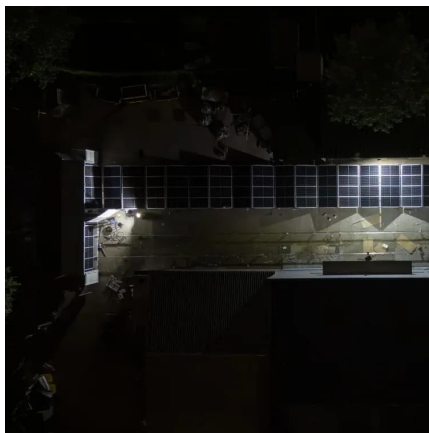
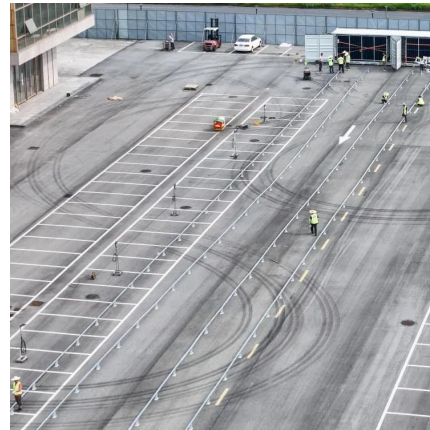
[Request Quote](#)



Demanding 1300 watts from a 1000 watt inverter. What will happen?

Ultimately, you just shouldn't run the inverter at a higher power than it is rated for. The fact that it didn't kick off actually worries me more than if it had kicked off. If you really ...

[Request Quote](#)



Inverter Usage Calculator

Enter the battery capacity, inverter efficiency, and load power into the calculator to determine the usage time of an inverter. This calculator helps to estimate how long an inverter ...

[Request Quote](#)

[12 Volt DC Power Inverter: In-Depth Learning and ...](#)

A 12-volt DC power inverter is an essential device for converting 12V direct current (DC) from a battery into 120V alternating current (AC), ...

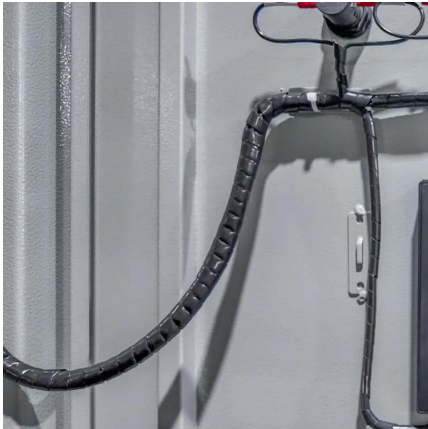
[Request Quote](#)



[Calculating Pure Sine Wave Inverter power draw](#)

How much current is drawn from a 12V or 24V battery when running a battery inverter? Documented in this article are common questions relating to the inverter draw (inverter amp ...

[Request Quote](#)



Demanding 1300 watts from a 1000 watt inverter. What will happen?

Ultimately, you just shouldn't run the inverter at a higher power than it is rated for. The fact that it didn't kick off actually worries me more than if it had kicked off. If you really want to use an ...

[Request Quote](#)



[Choosing the Best 1300 Watt Power Inverter for House](#)

This guide explores the benefits of using a 1300-watt, 120-volt power inverter as a backup power solution for homes. With a high-quality inverter like HzInverter's, you can ...

[Request Quote](#)



Go Power! Inverter Calculator

Go Power! Inverter Calculator Which power inverter is right for you? By answering these simple questions, we can recommend a product for you in just a few moments. This calculator helps ...

[Request Quote](#)





[12 Volt DC Power Inverter: In-Depth Learning and ...](#)

Discover how a 12-volt DC power inverter works, its applications, and how to choose the best one, Topbull inverters, for reliable and safe power ...

[Request Quote](#)

[Victron MultiPlus Inverter Charger Combi](#)

Victron MultiPlus Inverter Charger Combi (CMP121620000) 12 Volt to 240V Inverter - 1600VA - 1300 Watt and 70 Amp Battery Charger Lithium Ion Battery Compatible Two AC Outputs The ...

[Request Quote](#)



Inverter Usage Calculator

Enter the battery capacity, inverter efficiency, and load power into the calculator to determine the usage time of an inverter. This calculator helps ...

[Request Quote](#)

Battery for 3000W 12v inverter

Also, a 3000 watt 12 volt inverter to be used for anything real is not portable. My 3000 watt 24 bolt inverter has a 200LBS battery pack with solar that can push 2100 watts.

[Request Quote](#)



Microwave for a 1200 watt inverter?

An inverter microwave will allow you to run at a true 50% (or any other percentage) power while a normal microwave run at 50% power will cycle full power on and completely off ...

[Request Quote](#)



How to Understand Inverter Run Time with a 12 Volt Battery: A

Understanding inverter run time with a 12 volt battery is crucial for anyone relying on portable power solutions, especially in off-grid situations or during power outages. The run time ...

[Request Quote](#)



[How Long Will a 12V Battery Last with a 1500 Watt Inverter?](#)

A 1500W inverter is for small appliances, and in many cases a gel or AGM battery bank will do. What Will a 1500 Watt Inverter Run? An inverter is only limited by its capacity, or just below it ...

[Request Quote](#)





[How Long Will A 12V Battery Last With an Inverter - ...](#)

But a crucial question lingers: how long will your 12v battery actually last when powering devices through an inverter? This blog post will be your ...

[Request Quote](#)



[How to size an inverter that can run your air conditioner?](#)

In this article, I'll explain in detail the main specifications to look at when shopping for an inverter that can run your air conditioner. I get ...

[Request Quote](#)



[Sizing the Right Inverter for 100ah Battery](#)

Yes, you can use a 2000 watt inverter with a 100ah battery. But if you use 2000 watts from your 12v 100ah battery, it will use up the battery ...

[Request Quote](#)



12 Volt DC Power Inverter: In-Depth Learning and Buying Guide

A 12-volt DC power inverter is an essential device for converting 12V direct current (DC) from a battery into 120V alternating current (AC), allowing you to power standard ...

[Request Quote](#)



[Understanding Battery Capacity and Inverter Compatibility](#)

How Long Can a 100 Ah Battery Run a 1000W Inverter? To estimate how long a battery can run an inverter, we need to consider the power draw and the battery's capacity. ...

[Request Quote](#)



[Can I Connect a 12V Inverter to a 24V Battery Bank](#)

However, converters can add complexity and minor energy losses, so consider whether upgrading to a 24V inverter might be better. Can I use a 24V inverter on a 12V battery ...

[Request Quote](#)

Contact Us

For catalog requests, pricing, or partnerships, please visit:
<https://www.espaciovet.es>