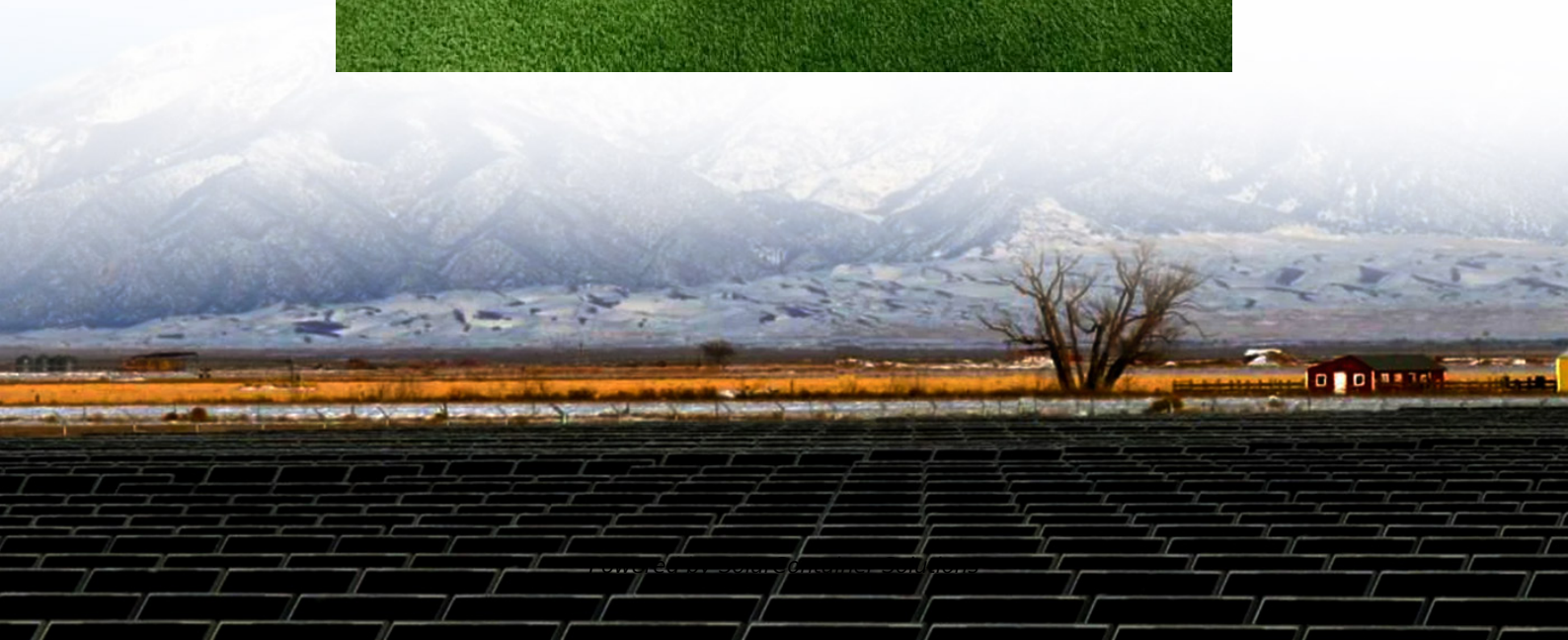


Can a 48v 15A lithium battery be used with an inverter





Overview

Yes, you can connect an inverter to a lithium battery. Lithium batteries, particularly Lithium Iron Phosphate (LiFePO4) batteries, are well-suited for use with inverters due to their high efficiency, lightweight design, and ability to deliver consistent power. Do lithium batteries work with inverters?

Lithium batteries typically offer better efficiency and longer life compared to lead-acid batteries. Inverter Efficiency: Lithium batteries generally work well with modern inverters, but checking the inverter's efficiency rating is advisable. Efficiency impacts the actual power delivered to the devices.

Are hybrid inverters compatible with lithium batteries?

Compatibility is the first and foremost consideration when setting up communication between a lithium battery and a hybrid inverter. Not all inverters are compatible with all lithium batteries. Therefore, it is crucial to ensure that the inverter you choose is designed to work with the specific type of lithium battery you plan to use.

What is a lithium ion battery for a home inverter?

Lithium-ion batteries offer a more consistent discharge rate, ensuring that your inverter operates smoothly and efficiently. A lithium-ion battery for a home inverter can significantly enhance your home's energy storage capabilities.

Can a lithium battery run a 1000W inverter?

Battery Discharge Rate: Lithium batteries can handle high discharge rates, which aligns well with the power demands of a 1000W inverter. However, verify that the battery's maximum discharge rate exceeds the inverter's power draw. Temperature and Maintenance: Lithium batteries perform best within specific temperature ranges.

How do I install a lithium battery for inverter?



Understanding your inverter type is crucial to avoid potential issues down the line. The first step in installing a lithium battery for inverter with an existing inverter is to assess your current setup. This includes evaluating the condition of your inverter and ensuring it meets the necessary specifications for lithium-ion batteries.

Which Inverter should I Choose?

A 500VA inverter would be suitable, offering a balance between performance and battery life. For extended run times, consider larger inverters or additional batteries to meet higher power demands. Inverter Efficiency: Higher efficiency reduces energy loss and maximizes battery usage.



Can a 48v 15A lithium battery be used with an inverter



[Understanding Battery Capacity and Inverter Compatibility](#)

Battery Discharge Rate: Lithium batteries can handle high discharge rates, which aligns well with the power demands of a 1000W inverter. However, verify that the battery's ...

[Request Quote](#)

[Can Lithium Batteries Work With Any Type of Inverter?](#)

When setting up solar energy systems or home energy storage, a common question arises: Are lithium batteries compatible with all inverters? ...

[Request Quote](#)



Calculate Battery Size For Any Size Inverter (Using Our Calculator)

Yes, you can connect an inverter to a lithium battery. Lithium batteries, particularly Lithium Iron Phosphate (LiFePO4) batteries, are well-suited for use with inverters due to their ...

[Request Quote](#)



[What size fuse between battery and inverter?](#)

Do I need a fuse between battery and inverter?
The short answer is yes, you do need a fuse (or a



circuit breaker) between your battery bank ...

[Request Quote](#)



Hybrid Inverter and Lithium Batteries: Setup Guide and Best ...

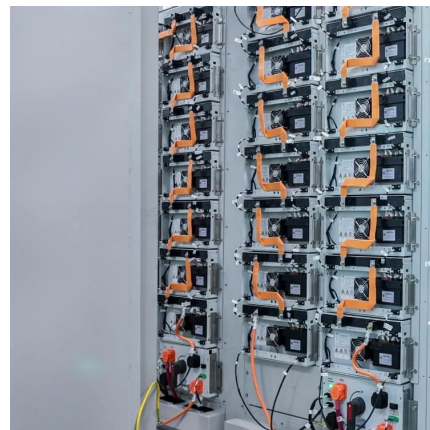
Compatibility is the first and foremost consideration when setting up communication between a lithium battery and a hybrid inverter. Not all inverters are compatible with all lithium batteries.

[Request Quote](#)

Can One 12 Volt Battery Run a 1000 Watt Inverter?

Yes, a single 12-volt battery can run a 1000-watt inverter, but the runtime depends on several factors such as the battery's capacity, the inverter's efficiency, and the load ...

[Request Quote](#)



Can Lithium Batteries Work With Any Type of Inverter?

The Bottom Line While lithium batteries can't work with every inverter, most modern solar and off-grid inverters now offer lithium ...

[Request Quote](#)



How to Determine if a 100Ah Battery Can Power a 1500W Inverter

Determining whether a 100Ah battery can effectively run a 1500W inverter involves understanding both the capabilities of the battery and the power requirements of the devices being powered. ...

[Request Quote](#)



[Can Lithium Batteries Work With Any Type of Inverter?](#)

When setting up solar energy systems or home energy storage, a common question arises: Are lithium batteries compatible with all inverters? The short answer is no - proper ...

[Request Quote](#)

[Can I use a 48V Golf Cart Battery charger for this?](#)

I just ordered my 48v 100A server rack batteries. I also have a Club Car 48v golf cart (and charger). Can I safely use the Club Car charger to charge my server rack batteries? I ...

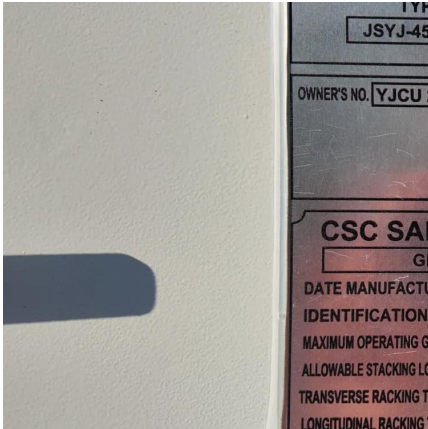
[Request Quote](#)



Compatibility of Lithium-Ion Batteries with Existing Inverters

This blog post will walk you through the essentials of lithium-ion batteries, their benefits, and the steps to seamlessly integrate them with your current inverter setup. From practical examples ...

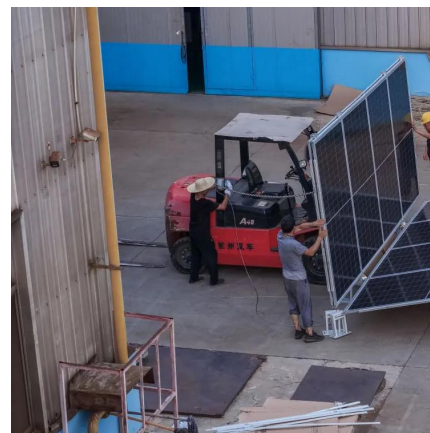
[Request Quote](#)



Understanding the Basics of Connecting Lithium Batteries to ...

Ensure that the battery's voltage is within the range that the inverter supports. Most inverters are designed for 12V, 24V, or 48V systems, so the battery should match this ...

[Request Quote](#)



[How Many Batteries Do I Need For a 1000 Watt Inverter](#)

It depends on several factors to determine how many batteries are needed to power a 1000 watt inverter, such as: battery capacity, battery voltage, and discharge rate.

[Request Quote](#)

[Importance of Compatibility Between Inverter and ...](#)

Among these innovations, lithium batteries have emerged as the preferred choice for backup power due to their efficiency, longevity, and ...

[Request Quote](#)





[Understanding the Basics of Connecting Lithium ...](#)

Ensure that the battery's voltage is within the range that the inverter supports. Most inverters are designed for 12V, 24V, or 48V systems, so the ...

[Request Quote](#)

Calculate Battery Size For Any Size Inverter (Using Our Calculator)

Pairing a right size capacity battery for an inverter can be a bit confusing for most the beginners So I have made it easy for you, use the calculator below to calculate the battery ...

[Request Quote](#)



48V or 51V battery

I see batteries with 48 and with 51V - they are very close only 3 V difference. Which one should I choose? What dictates what voltage to be ...

[Request Quote](#)

[How do I match a lithium solar battery with an inverter?](#)

Matching a lithium solar battery with an inverter is a crucial step in setting up an efficient solar power system. As a supplier of lithium solar batteries, I've seen firsthand how the right ...

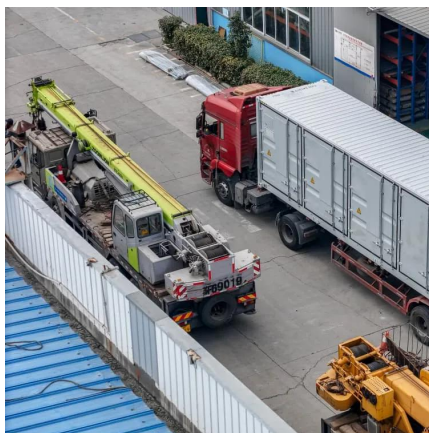
[Request Quote](#)



[Understanding the Basics of Connecting Lithium ...](#)

Lithium batteries are widely used in energy storage systems due to their high efficiency, long life cycle, and light weight. Connecting a lithium ...

[Request Quote](#)



How to Charge 48V Battery with Solar Panel: A Step-by-Step ...

Learn how to efficiently charge a 48V battery with solar panels in this comprehensive guide. Discover the benefits of renewable energy, essential components, and ...

[Request Quote](#)



[Power Inverter use with 48 Volt Li Battery Pack](#)

I use the inverter to charge my ebikes and small appliances like the TV, vacuum cleaner and coffee grinder. I don't even try to use the air conditioning but do use several 12 ...

[Request Quote](#)

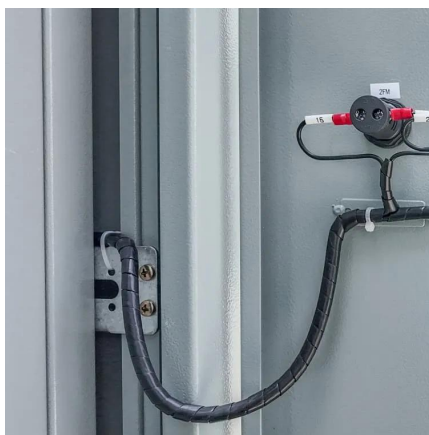




[Battery for 48v 500w rear motor geared ebike ...](#)

As a hobby project I'm planning to do an ebike conversion of a hardtail mountain bike using a 48v 500w geared rear motor conversion kit. I'm ...

[Request Quote](#)



[Lithium battery with an unsupported Inverter](#)

For the past eight years I have been using both types of lithium batteries with two different hybrid inverters at voltages approximately 48 volts, What DC voltage are you ...

[Request Quote](#)

[Hybrid Inverter and Lithium Batteries: Setup Guide ...](#)

Compatibility is the first and foremost consideration when setting up communication between a lithium battery and a hybrid inverter. Not all ...

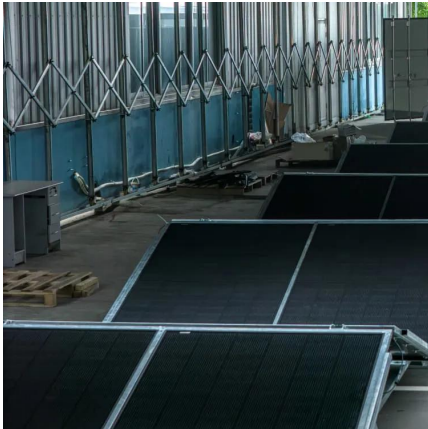
[Request Quote](#)



[Can I Connect Inverter to Lithium Battery?](#)

Yes, you can connect an inverter to a lithium battery. Lithium batteries, particularly Lithium Iron Phosphate (LiFePO4) batteries, are well-suited for use with inverters due to their ...

[Request Quote](#)



Can you convert 24V to 48V?

Yes, converting 24V to 48V is achievable through series wiring of two 24V batteries, DC-DC boost converters, or motor/controller rewiring. However, success depends ...

[Request Quote](#)



[Understanding Battery Capacity and Inverter Compatibility](#)

Inverter Efficiency: Lithium batteries generally work well with modern inverters, but checking the inverter's efficiency rating is advisable. Efficiency impacts the actual power ...

[Request Quote](#)

Amazon : 48V 8AH 10AH 15AH 20AH 25AH 30AH Electric Bike Lithium

Please review the Safety Tips for Lithium-Ion Batteries from Fire Department of the City of New York (FDNY) . Always follow the manufacturer's instructions for battery charging ...

[Request Quote](#)





Contact Us

For catalog requests, pricing, or partnerships, please visit:
<https://www.espaciovet.es>