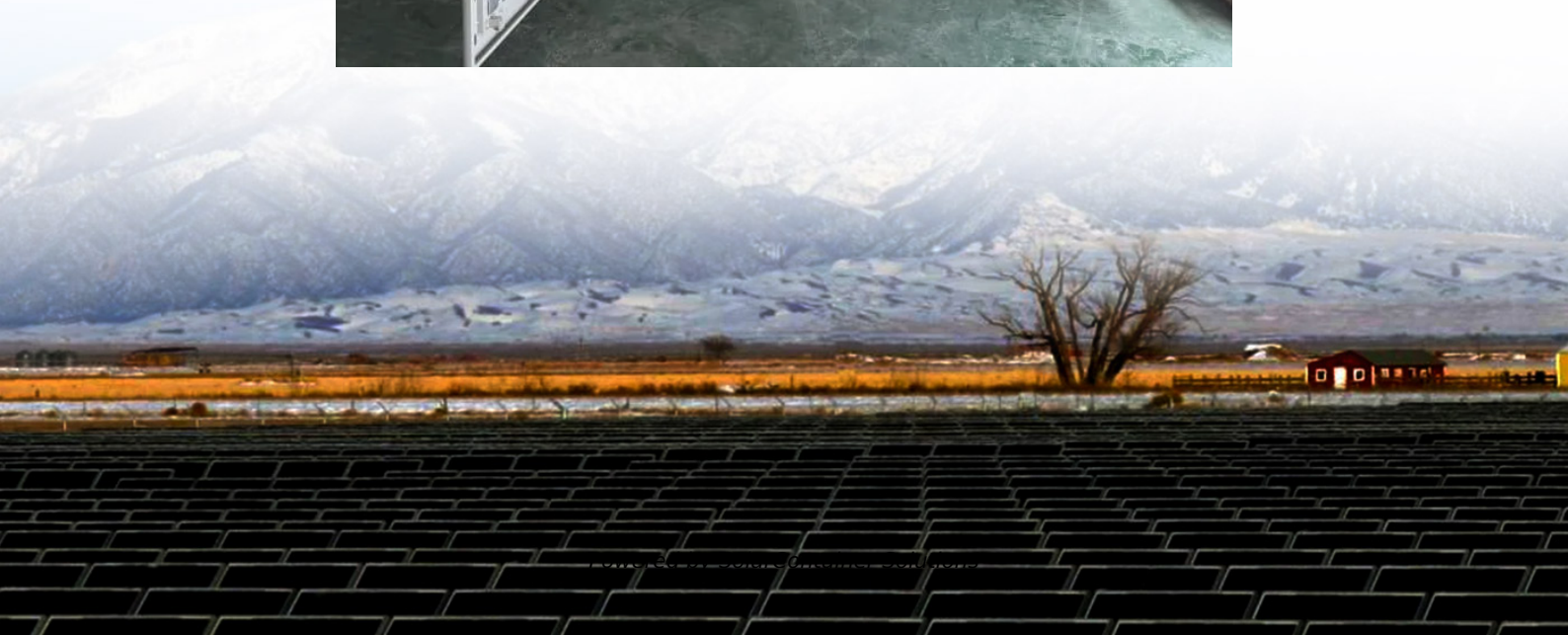


# **Chad 5G base station power consumption**





## Overview

---

When base stations, data centers and devices are added together, telecommunications will consume more than 20% of the world's electricity by 2025, says Huawei analyst Dr. Anders Andrae.

How much power does a 5G base station consume?

That's almost a threefold increase compared to 4G (5). One 5G base station is estimated to consume about as much power as 73 households (6), and 3x as much as the previous generation of base stations (5), (7).

Is 5G base station power consumption accurate?

esan@huawei.comAbstract—The energy consumption of the fifth generation (5G) of mobile networks is one of the major concerns of the telecom industry. However, there is not currently an accurate and tractable approach to evaluate 5G base stations (BSs) power consumption. In this article, we pr.

How much electricity does 5G use?

To achieve gigabit speeds, the plan with 5G is to have it operate at very high frequencies of 24-26 Gigahertz. For this reason, 5G requires millions of new so-called "small cells," for example, transmitters in lampposts. Billions of new wireless devices will soon be available worldwide. All of the above consumes electricity.

Is there a power consumption model for realistic 5G AAUs?

s.VI. CONCLUSIONSIn this paper, we presented a novel power consumption model for realistic 5G AAUs, which builds on large data collection campaign. At first, we proposed an ANN architecture, which allows modelling mu.

Can a power consumption model drive the optimisation of greener 5G?

curacy of our proposed model indicates that it may be a more viable tool to drive the optimisation of greener 5G (and beyond) networks.VI. CONCLUSIONSIn this paper, we presented a novel power consumption model for realistic 5G AAUs, which builds on.



## Will 5G increase energy costs in 2026?

Currently, three percent of the world's energy demand comes from wireless communications (4). Telecom providers expect their energy costs to increase by 150-170 percent by 2026 with the advent of 5G technology, according to a study by Vertiv, a U.S. network service provider. That's almost a threefold increase compared to 4G (5).



## Chad 5G base station power consumption

---



### [Why does 5g base station consume so much power ...](#)

5G base stations use high power consumption and high RF signals, which require more signal processing for digital and electromechanical units, ...

[Request Quote](#)

### [What is the Power Consumption of a 5G Base Station?](#)

These 5G base stations consume about three times the power of the 4G stations. The main reason for this spike in power consumption is the addition of massive MIMO and ...

[Request Quote](#)



### [Power consumption based on 5G communication](#)

This paper proposes a power control algorithm based on energy efficiency, which combines cell breathing technology and base station sleep technology to reduce base station energy ...

[Request Quote](#)



### [Size, weight, power, and heat affect 5G base station ...](#)

Engineers designing 5G base stations must contend with energy use, weight, size, and heat,





which impact design decisions.

[Request Quote](#)



## Energy-efficiency schemes for base stations in 5G heterogeneous

In today's 5G era, the energy efficiency (EE) of cellular base stations is crucial for sustainable communication. Recognizing this, Mobile Network Operators are actively prioritizing EE for ...

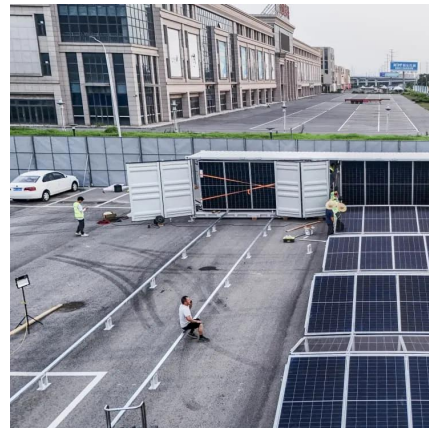
[Request Quote](#)



## Why does 5g base station consume so much power and how to ...

5G base stations use high power consumption and high RF signals, which require more signal processing for digital and electromechanical units, and also put greater pressure ...

[Request Quote](#)



## Measurements and Modelling of Base Station Power Consumption under Real

Power consumption caused by air conditioning can be reduced by minimizing the operational temperature of base station models, or by using additional elements like heat exchangers, ...

[Request Quote](#)





## Power Delivery Challenges with 5G NR

The two primary power delivery challenges with 5G new radio (NR) are improving operational efficiency and maximizing sleep time. For example, ...

[Request Quote](#)



## **Technical Requirements and Market Prospects of 5G Base Station ...**

5G base station chips play a critical role in the construction of 5G networks. As technology continues to advance, base station chips will demonstrate higher performance and ...

[Request Quote](#)

## **Power Consumption Modeling of 5G Multi-Carrier Base Stations: ...**

We demonstrate that this model achieves good estimation performance, and it is able to capture the benefits of energy saving when dealing with the complexity of multi-carrier ...

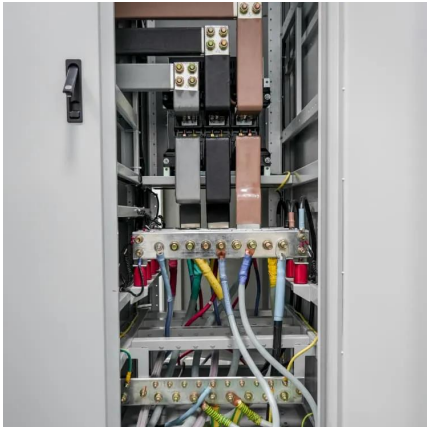
[Request Quote](#)



## **Power Consumption Modeling of 5G Multi-Carrier Base Stations: ...**

However, there is still a need to understand the power consumption behavior of state-of-the-art base station architectures, such as multi-carrier active antenna units (AAUs), as ...

[Request Quote](#)



### [Network energy consumption modeling and performance](#)

5G - by design the most energy efficient cellular generation to date - evolves further with new features and solutions to further improve energy performance.

[Request Quote](#)



### [Dynamic Power Management for 5G Small Cell Base Station](#)

5G networks with small cell base stations are attracting significant attention, and their power consumption is a matter of significant concern. As the increase of the expectation, concern for ...

[Request Quote](#)

### **AI-based energy consumption modeling of 5G base stations: an ...**

The energy consumption of 5G networks is one of the pressing concerns in green communications. Recent research is focused towards energy saving techniques of base ...

[Request Quote](#)





## Modelling the 5G Energy Consumption using Real-world Data:

...

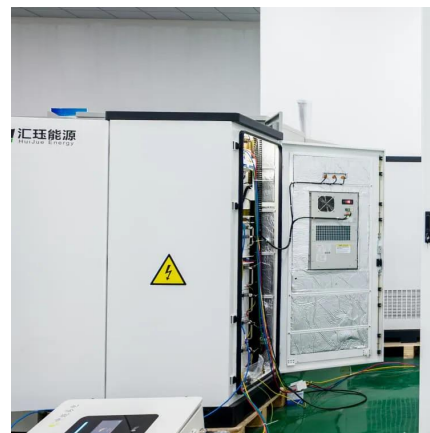
This paper proposes a novel 5G base stations energy consumption modelling method by learning from a real-world dataset used in the ITU 5G Base Station Energy Consumption Modelling ...

[Request Quote](#)

## [Energy-efficient 5G for a greener future](#)

However, the total power consumption of the 5G base station is about four times that of the 4G. Considering the high deployment density of 5G base stations, the overall power ...

[Request Quote](#)



## How Much Power Does a 5G Base Station Consume? - Smart Solar

On average, a 5G base station consumes between 1,000 to 3,000 watts. This is significantly higher than 4G base stations, which typically consume 500 to 1,500 watts.

[Request Quote](#)



## Power consumption - 5G Technology

Likewise, while 5G's power consumption will require more base stations per square kilometre, these will only need as much power as required - whereas predecessor networks are always ...

[Request Quote](#)





## Optimal configuration for photovoltaic storage system capacity in 5G

Base station operators deploy a large number of distributed photovoltaics to solve the problems of high energy consumption and high electricity costs of 5G base stations. In this ...

[Request Quote](#)



## How much power does 5G consume?

When base stations, data centers and devices are added together, telecommunications will consume more than 20% of the world's electricity by 2025, says Huawei analyst Dr. Anders ...

[Request Quote](#)



## Analysis of power consumption in standalone 5G network and ...

This paper proposes two modified power consumption models that would accurately depict the power consumption for a 5G base station in a standalone network and a novel ...

[Request Quote](#)





### [Comparison of Power Consumption Models for 5G Cellular ...](#)

Power consumption models for base stations are briefly discussed as part of the development of a model for life cycle assessment.

[Request Quote](#)



### **Base station power control strategy in ultra-dense networks via ...**

Within the context of 5G, Ultra-Dense Networks (UDNs) are regarded as an important network deployment strategy, employing a large number of low-power small cells to ...

[Request Quote](#)

### [Machine Learning and Analytical Power Consumption ...](#)

roduce a new power consumption model for 5G active antenna units (AAUs), the highest power consuming component of a BS1 and in turn of a mobile network. I. particular, we present an ...

[Request Quote](#)



### [5G Base Stations: The Energy Consumption Challenge](#)

Although the energy consumption of 5G base stations is higher than any previous generations, technology and strategy innovations mentioned above would help MNOs stabilize or even ...

[Request Quote](#)



## Contact Us

---

For catalog requests, pricing, or partnerships, please visit:  
<https://www.espaciovet.es>