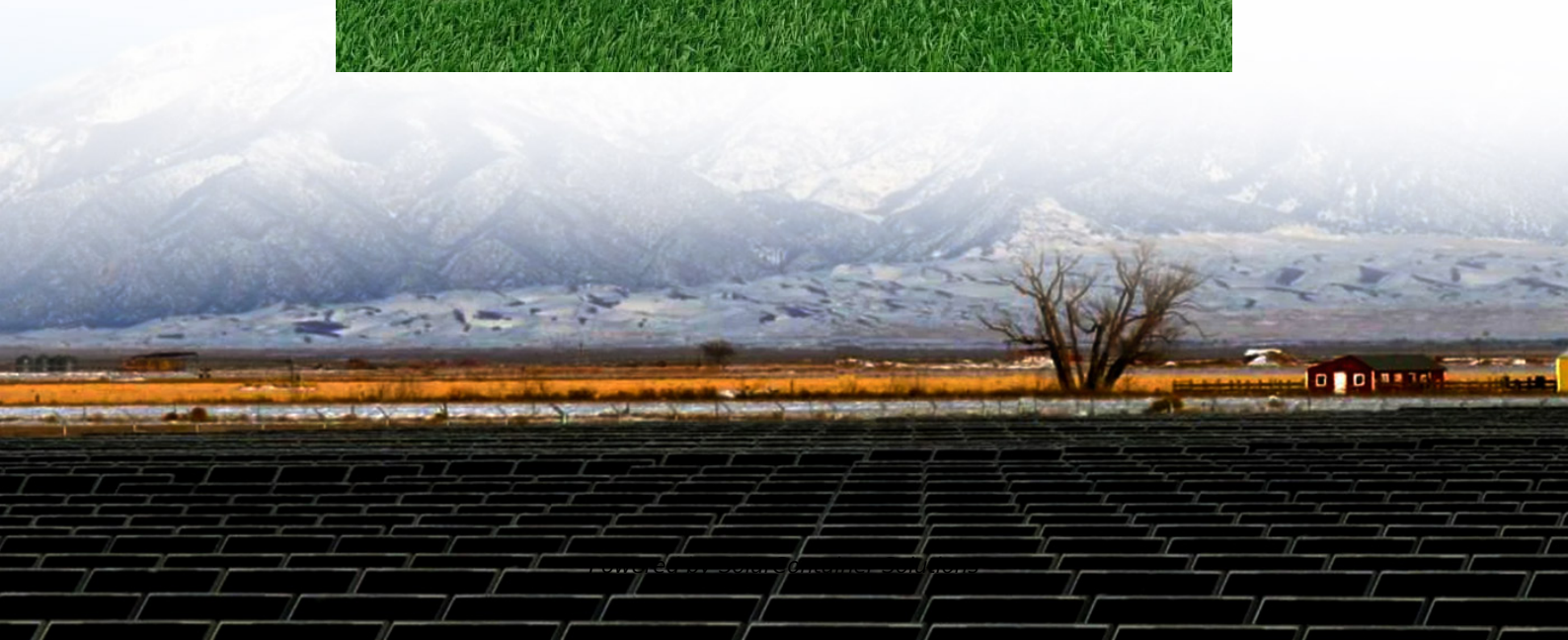


Charging inverter charging voltage is low





Overview

Why does my inverter not charge a battery?

If an inverter fails to charge a battery the most likely reason is low voltage due to faulty wiring or a dead battery. If replacing the batteries and wires does not resolve the problem, the inverter internal circuits might be damaged. Let us take a look at the other possible reasons why an inverter fails to charge batteries.

What voltage should an inverter charger be?

A typical inverter charger requires the voltage to be above 11.5V, assuming the inverter is 12V. If the voltage is lower than this, the system electronics will not be able to initiate a charge. The Ultrapower Battery Load Tester can check the status of your battery. Some batteries can also be charged via AC power.

What happens if a battery inverter fails?

Over time, batteries can lose their ability to hold a charge effectively, leading to a malfunctioning inverter. Inadequate battery capacity can also cause the inverter to get into trouble when it comes to charging the battery, as the inverter may be unable to supply the necessary amount of power to charge the battery fully.

What is a low battery voltage?

Low battery voltage An inverter battery needs a voltage supply equal to or above 11.5V. If your voltage falls below this limit, the inverter systems might not initiate the charge.

Does a solar inverter charge a battery?

In a typical solar power setup, the inverter does not actually charge the battery. It is the solar panel that powers the battery bank and the inverter draws its power from the batteries. An inverter charger is a versatile system, able to charge batteries and run appliances.

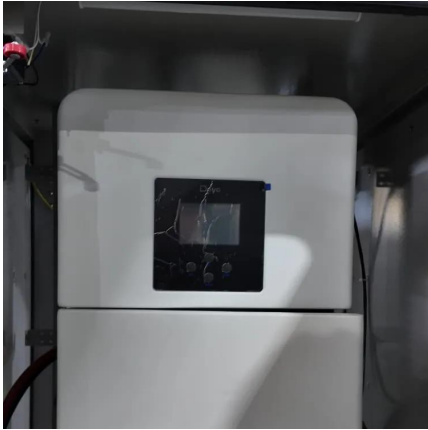


What happens if battery voltage is too low?

When the battery voltage is too low, the inverter may have trouble charging it. Your battery needs to be charged to a certain voltage level in order to function properly. If the voltage is too low, it may not be accepting a charge properly or may not be able to hold a charge for very long.



Charging inverter charging voltage is low



[7 Reasons Your Inverter Battery is Not Charging](#)

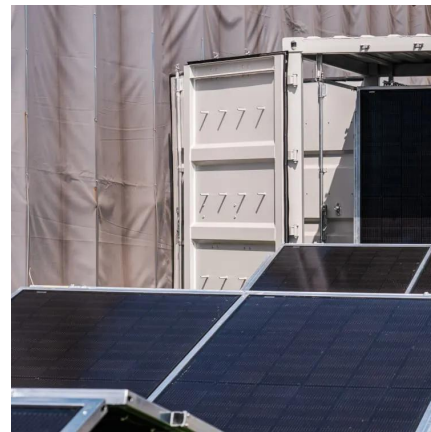
Hopefully, you have been able to identify and fix the reason your inverter battery is not charging. To stop you having problems in the future here are some helpful tips to increase charging ...

[Request Quote](#)

[Voltage drop from inverter load \(large load\)](#)

250 Watt AC inverter capacity * 360 AH * 1/100 AH = 900 Watts Fully recharge the battery as soon as possible following each discharge Always check that ...

[Request Quote](#)



[Troubleshooting Guide: Why your Inverter may not be Charging](#)

In this comprehensive troubleshooting guide, we delve into common problems that can impede the charging capabilities of your inverter, along with practical solutions to unveil ...

[Request Quote](#)

Inverter not Charging

Is your inverter not charging? Discover common reasons like battery issues, wiring problems, and more in this comprehensive guide. Learn



troubleshooting tips to restore power ...

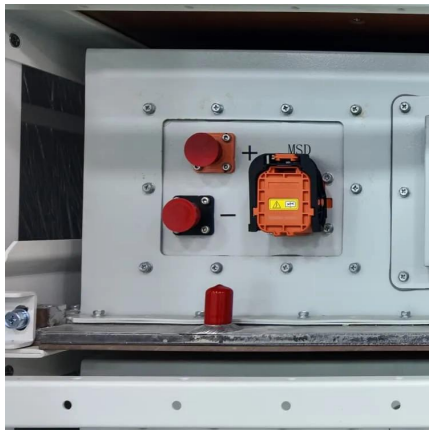
[Request Quote](#)



[Charge controller showing batteries full, but battery ...](#)

When there is sun on the solar panels, measure the voltage at the charge controller output. I bet it will be right at your bulk charge voltage. The ...

[Request Quote](#)



[5 Reasons Your Inverter is Not Charging the Battery](#)

The panels run through an outback flexmax60, sand the voltage output from the charge controller typically ranges around 30v. This seems to confuse the inverter, causing it to enter float ...

[Request Quote](#)



7. Trouble Shooting Table

7. Trouble Shooting Table Proceed as follows for quick detection of common faults. DC loads must be disconnected from the batteries and the AC loads must be disconnected from the ...

[Request Quote](#)

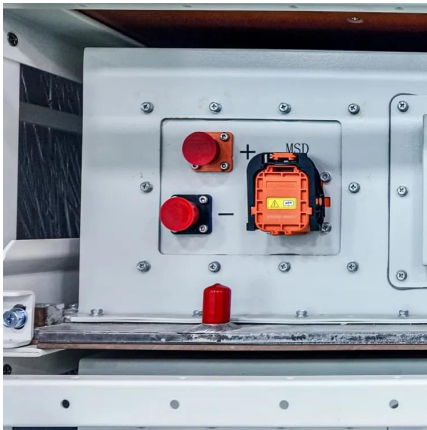




[How to Check Inverter Is Charging Battery](#)

In this article, we will follow step-by-step instructions on how to check whether your inverter is charging your battery.

[Request Quote](#)



[Inverter battery not charging: Common problems and solutions](#)

Find solutions to common problems with inverters that may cause batteries to not charge or accept charge.

[Request Quote](#)

[5 Reasons Your Inverter is Not Charging the Battery](#)

There are many reasons why your inverter is not charging the battery. Use this guide to find out why and how to fix it.

[Request Quote](#)



[RV Inverter Not Charging: Solutions & Troubleshooting Tips](#)

Understanding the role of your RV inverter helps in troubleshooting issues related to charging. Functionality of RV Inverters RV inverters play a vital role in ensuring that you have ...

[Request Quote](#)



[Inverter battery not charging: Common problems and solutions](#)

If your inverter battery is not charging, one of the common problems could be low battery voltage. When the battery voltage is too low, the inverter may have trouble charging it.

[Request Quote](#)



Help with Growatt Maximum Ac Charge Current. Low Voltage ...

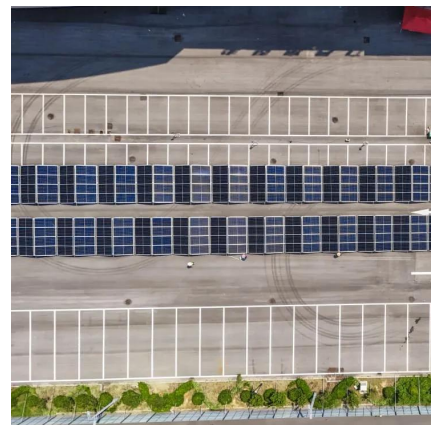
Max PV charge current If your Max charge current is only 30a you are severely limiting PV production from your panels. On your AC voltage dipping low during a grid lost and ...

[Request Quote](#)

[Inverter/Charger not charging due to Battery Voltage](#)

The panels run through an outback flexmax60, sand the voltage output from the charge controller typically ranges around 30v. This seems to confuse the inverter, causing it to enter float ...

[Request Quote](#)





Inverter Battery Charging Mode: Causes, Concerns, And ...

Yes, low battery voltage can be the reason your inverter is always charging. When the battery voltage drops below a certain threshold, the inverter will initiate charging to restore ...

[Request Quote](#)

Why does voltage shoot up so quickly when charging?

11V was measured under load / excessive charging current / batteries are degraded. Pick your poison. Measuring voltage under load does ...

[Request Quote](#)



Gel battery losing charge fast and weird inverter behavior

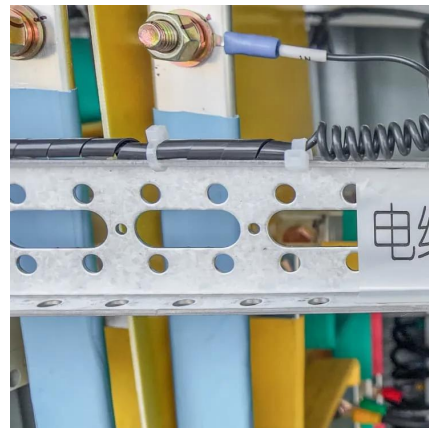
I have a solar system comprised of 4 Welion gel batteries 12v 150Ah each, 6 panels 545 watts, and a Growatt 5000es inverter. Recently, the batteries are getting ...

[Request Quote](#)

12 Reasons for not charging the growth inverter battery

12 reasons why the gravitate inverter does not charge the battery 1. Incorrect Wiring or Connection: Make certain that the battery is properly ...

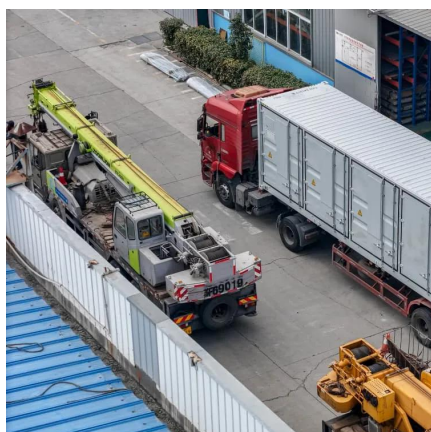
[Request Quote](#)



Inverter/UPS with Low-Voltage Charging: A New Standard for Battery Charging

The mains power voltage range for properly charging a battery depends on the type of charger designed in the Inverter/UPS. When the mains voltage is low, the Inverter will ...

[Request Quote](#)



[Inverter bus voltage is too low , DIY Solar Power Forum](#)

These inverters have a special circuit, like a soft start for the high voltage DC bus. This soft start circuit has very low current delivery capability. The main converter starts only ...

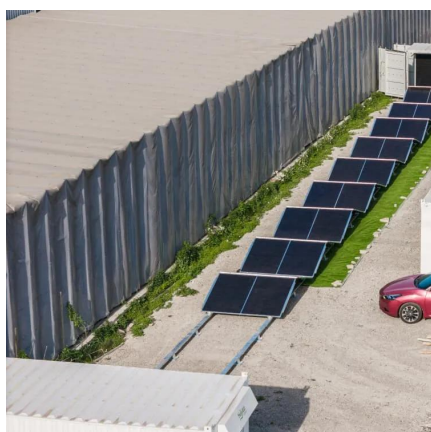
[Request Quote](#)



4. Configuration

4.1. AC output voltage and frequency 4.2. ECO mode and ECO settings 4.3. Low battery alarm and charge detect settings 4.4. Battery settings 4.5. VE.Smart Networking 4.6. Firmware ...

[Request Quote](#)





Issues with SunGold Power 3000w 12v inverter. Low charging voltage

Sungold claims that their inverter is compatible with Lifepo4 batteries SunGolds own documentation states that the Lithium charge profile is only 14.0 volts. LifePo4 batteries ...

[Request Quote](#)



[Why Is My Inverter Not Charging My Lithium Battery?](#)

If your inverter is not charging your lithium battery, several factors could be at play, including compatibility issues, connection problems, or even environmental conditions. ...

[Request Quote](#)

Contact Us

For catalog requests, pricing, or partnerships, please visit:
<https://www.espaciovet.es>