

Communication base station EMS cabinet specifications





Overview

What is a communications equipment system?

Some communications equipment systems include detectors and alarms that transmit to centralized control centers within the system itself. High-rise buildings often utilize a second dedicated facility alarm and can be included as part of a central alarm system connected to the local fire department.

What features are included with the mts4 basestation equipment?

Full redundancy of site controller and base radio subsystems including support for automatic Main Control Channel switching. With the MTS4, there is no need to worry about theft or vandalism. The basestation equipment includes the latest security features for total peace of mind:.

What is a code-compliant two-way communication system for rescue assistance?

A code-compliant two-way communication system for rescue assistance requires a central control point to manage emergency assistance calls from call boxes. Requires a single analog (POTS, PBX, or central office phone line) or digital phone line. If used on an IP or cellular network, you must purchase an additional interface device from RATH.

What are the shipping requirements for a self-contained radio site?

A “shipping container” that has been outfitted as a self-contained radio site must meet strict dimensional requirements, including protrusions such as HVAC, RF entry assemblies, or AC entrances, and must conform to applicable shipping requirements.

What is a communications enclosure & ancillary system?

An enclosure that houses communications equipment and ancillary systems only, designed such that equipment contained within can be accessed without the need for personnel to enter the cabinet. An enclosure is typically pre-wired



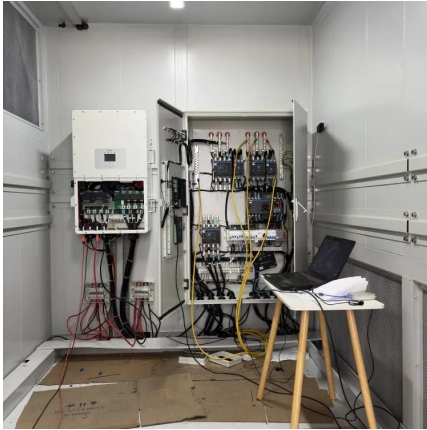
and its equipment is pre-installed. Example: (See Figure 3-2 and Figure 3-4.)
An unmanned, weather-tight enclosure.

What can a base station do if a link fails?

Redundant E1 and Ethernet ports can be activated in the event of link failure, ensuring continuous connectivity. Local Site Trunking – in the event of site link failure, the base station is able to operate independent of the mobile switching office, maintaining secure talkgroup communications throughout.



Communication base station EMS cabinet specifications



Dispatch Communication Consoles

Motorola Dispatch Consoles offer options for both emergency and everyday situations. Learn which Dispatch Consoles are best for your dispatch center.

[Request Quote](#)

[BESS Commerical Energy Storage Cabinet System](#)

By seamlessly integrating leading brands hybrid inverters into the IP55-protected battery cabinet, a compact, easy-to-install, and high-performance turnkey ...

[Request Quote](#)



[SPECIFICATION 271100 COMMUNICATIONS CABINETS ...](#)

All tenants communication systems cabling and equipment shall be installed in the HAS controlled tenant space, as defined in the third item in this section. This shall apply to all ...

[Request Quote](#)

[Rath Communications Base Station 28 Zone](#)

The Rath Communications Base Station 28 Zone - Surface Mount is part of Rath's Area of Rescue



System; a durable, cost effective security solution.

[Request Quote](#)



[SmartRescue Base Stations \(2500 Series\)](#)

Contact us regarding local availability. A code-compliant two-way communication system for rescue assistance requires a central control point to manage emergency assistance calls from ...

[Request Quote](#)



[BESS Commerical Energy Storage Cabinet System , AZE](#)

By seamlessly integrating leading brands hybrid inverters into the IP55-protected battery cabinet, a compact, easy-to-install, and high-performance turnkey energy storage system is achieved. ...

[Request Quote](#)



[EK-SG-D02 Mobile outdoor simple energy cabinet](#)

The EK-SG-D02 mobile outdoor simple energy cabinet is an integrated system for network communications, base station power supply and remote area site operations. It is suitable for ...

[Request Quote](#)

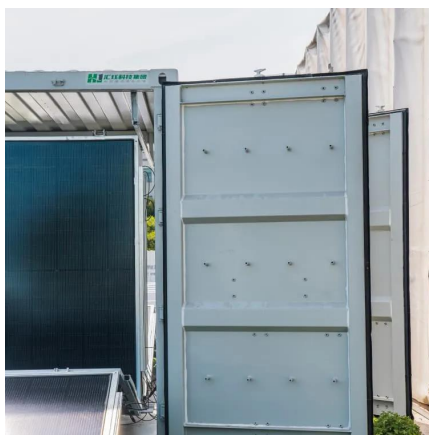




[Rath Communications Base Station 12 Zone](#)

The Rath Communications Base Station 12 Zone - Surface Mount is part of Rath's Area of Rescue System; a durable, cost effective security solution.

[Request Quote](#)



[Base Station SmartRescue 5, Surface Mount Cabinet w/Door](#)

Ideal for residential, commercial, and industrial environments such as parking garages, stairwells, and more, this system ensures that individuals can safely gather and await instructions from ...

[Request Quote](#)

[MTS4L TETRA/LTE Base Station Specification Sheet](#)

Built and designed for future communications needs, the MTS4 supports TETRA Enhanced Data Services (TEDS) - the platform for secure mission critical high speed data services.

[Request Quote](#)



[MTS4L TETRA/LTE Base Station Specification Sheet](#)

Local Site Trunking - in the event of site link failure, the base station is able to operate independent of the mobile switching office, maintaining secure talkgroup communications ...

[Request Quote](#)



[Base Station SmartRescue 5, Surface Mount Cabinet ...](#)

Ideal for residential, commercial, and industrial environments such as parking garages, stairwells, and more, this system ensures that individuals can safely ...

[Request Quote](#)



EMF

When base stations are located close to users, the transmitter power required by the mobile phone and the base station to communicate is relatively low. If base stations were located ...

[Request Quote](#)

NEMA 4X Weatherproof Enclosures , NEMA 4X Equipment Cabinets ...

Integrated Outdoor Telecom Cabinet with Air Conditioner (with sandwich panel double-wall structure design) is mainly used for wireless communication base station to house a variety of ...

[Request Quote](#)





[Base Station Radio Cabinets , Samlex](#)

Designed to house power supplies, radios, batteries, and auxiliary components, these cabinets offer clean integration and simplified field deployment for critical communications setups.

[Request Quote](#)

[Rath Communications Base Station 36 Zone](#)

This system features a lockable base station cabinet and two-way communication utilizing one dedicated phone line. With one pair of wires between the call box and distribution module, ...

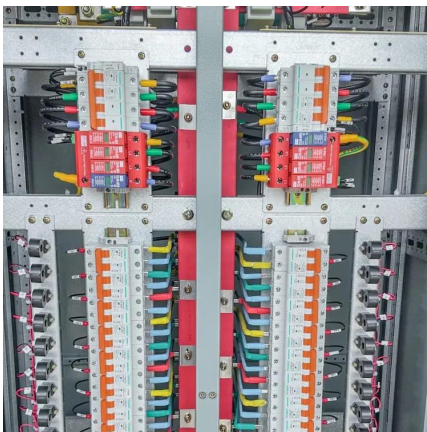
[Request Quote](#)



[Outdoor communication energy cabinet](#)

Highjoule powers off-grid base stations with smart, stable, and green energy. Highjoule's site energy solution is designed to deliver stable and reliable power for telecom base stations in off ...

[Request Quote](#)



[Designing Fire And EMS Stations: A Comprehensive Guide](#)

Fire and EMS stations also contribute to infectious disease risks. Due to the nature of their work, fire and EMS personnel are at an increased risk of exposure to bloodborne and airborne ...

[Request Quote](#)



[SmartRescue Base Stations \(2500 Series\)](#)

A code-compliant two-way communication system for rescue assistance requires a central control point to manage emergency assistance calls from call boxes. ...

[Request Quote](#)



[Rath Communications Base Station 16 Zone](#)

The Rath Communications Base Station 16 Zone - Surface Mount is part of Rath's Area of Rescue System; a durable, cost effective security solution.

[Request Quote](#)



[Communication site energy cabinet management system](#)

Centralized management of integrated power supply cabinets in communication sites, and display of geographic data. Note: Specifications are subject to change without prior notice for product ...

[Request Quote](#)

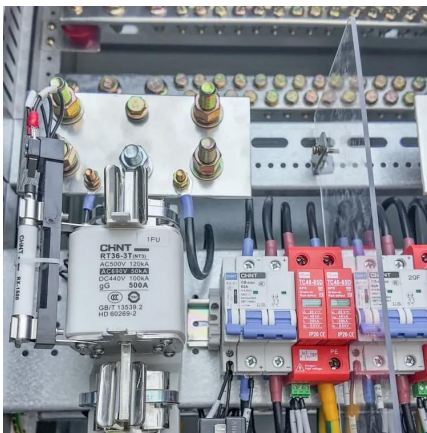




Utility-scale battery energy storage system (BESS)

Introduction Reference Architecture for utility-scale battery energy storage system (BESS) This documentation provides a Reference Architecture for power distribution and conversion - and ...

[Request Quote](#)



COMMUNICATION SITE BUILDING DESIGN AND ...

This chapter provides requirements and recommendations for designing communications site buildings, including equipment shelters and outdoor cabinets. The following topics are discussed:

[Request Quote](#)

Rath Communications Call Commander Base Station

This system features a lockable base station cabinet and two-way communication utilizing one dedicated phone line. With one pair of wires between the call box ...

[Request Quote](#)



Contact Us

For catalog requests, pricing, or partnerships, please visit:
<https://www.espaciovet.es>