

Composition of the lightning protection system for the communication base station inverter





Overview

Does a lightning arrester protect a telecommunication station?

Lightning protection (strikes with indirect effects) for telecommunication stations by lightning arresters, is applicable for all electrical networks. It is also compulsory to provide protection against lightning strikes with direct effects by placing a lightning arrester (near the top of the).

How should a lightning protection System (RBS) be formed?

The earthing network of an RBS should be formed by a ring loop surrounding the tower, equipment room and fence, at a minimum. The mean radius r_e of this ring loop should be not less than l_1 , as indicated in Figure 1 and this value depends on the lightning protection system (LPS) class and on the soil resistivity.

Who needs lightning protection?

or a large private subscriber / consumer (tertiary industry, others). Lightning protection (strikes with indirect effects) for telecommunication stations by lightning arresters, is applicable for all electrical networks.

What is a lightning protection system (LPS)?

3.2.3 lightning protection system (LPS): Complete system used to reduce physical damage due to lightning flashes to a structure. NOTE – An LPS consists of both external and internal lightning protection system.

How to protect against indirect lightning strikes on electrical networks?

Protection against indirect lightning strikes on electrical networks must be treated globally. ABB Soulé offers a complete range of lightning arresters adapted to this approach. They must be used in accordance with standard practice with a ground network optimized by earthing (low impedance).

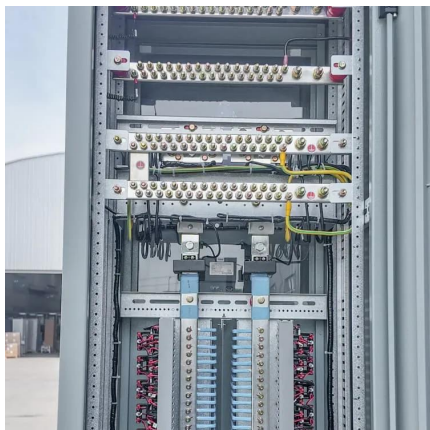
Is a telecommunication tower impacted by lightning?



If the antenna is installed on the top of telecommunication tower, e.g., antenna positions 1 of Figure 29, it is considered to be impacted by or exposed to direct lightning strikes. Refer to [IEC 62305-3] for detail information about the protection angles and volume protected by an air termination system.



Composition of the lightning protection system for the communication



[Communication Network GSM-Base Stations and ...](#)

The protection of GSM and base station towers from lightning and overvoltage is provided by integrating external lightning systems, internal lightning systems, ...

[Request Quote](#)

Lightning protection solution for telecom communication base ...

The first level lightning arrester is used to discharge most of the lightning current, and subsequent lightning arresters further limit residual voltage to protect power equipment ...

[Request Quote](#)



[ITU-T Rec. K.112 \(07/2019\) Lightning protection, earthing ...](#)

The purpose of this Recommendation is to give detailed guidance on protection procedures, so that an engineer who is not a lightning protection expert can accomplish the design of the ...

[Request Quote](#)



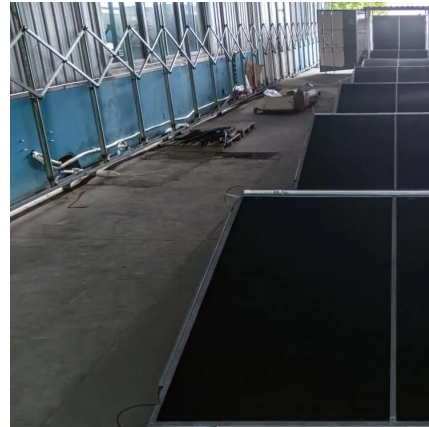
[Facility Lightning Protection - Structures vs. Systems](#)

A complete facility lightning protection system is also essential to achieve safe and effective



protection. Partial systems leave facilities ...

[Request Quote](#)



Telecommunication base station system working principle and system

The ESB-series outdoor base station system utilizes solar energy and diesel engines to achieve uninterrupted off grid power supply. Solar power generation is the use of photovoltaic panels to ...

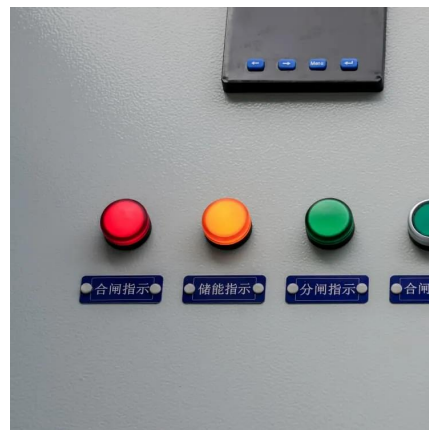
[Request Quote](#)



Communication Base Station (Independent Station) Lightning ...

This solution simplifies the complex base station ground network engineering by using the equipment method, and completely isolates the impact between lightning protection grounding, ...

[Request Quote](#)



[LIGHTNING PROTECTION SOLUTION FOR BASE ...](#)

The most important base station equipment is composed of highly integrated microelectronics components with high read/write speed, low ...

[Request Quote](#)





Communication base station is with intelligent AC distribution

The utility model relates to a communication base station is with intelligent AC distribution lightning prevention box, including protective box, binding post, circuit unit group is hit in the ...

[Request Quote](#)



[How Base Station to Be Protected From Lightning](#)

The building lightning protection grounding and indoor grounding are all led out from the public grounding network. At the same time, the protective grounding, logical ...

[Request Quote](#)

[The composition and impact of photovoltaic power stations](#)

The combiner box includes lightning protection functions. After collecting the current from multiple PV strings, it passes through a DC circuit breaker and outputs to the PV ...

[Request Quote](#)



[Lightning and Surge Protection for Communication Station](#)

Install lightning rods, grounding, surge protectors, shielding, and follow standards for effective communication station protection.

[Request Quote](#)



Table II from Simulation Research on Current Distribution

TABLE II. EQUIVALENT PARAMETERS OF COMMUNICATION POLE SYSTEM - "Simulation Research on Current Distribution Characteristics of Pole Communication Base Station Based ...

[Request Quote](#)



GROUNDING SYSTEM AND LIGHTENING / GROUND ...

Excerpt from Inverter Charger Series Manual i
INFO The information given is intended to provide basic grounding techniques and lightning protection. It is not intended to be a complete course ...

[Request Quote](#)

K.97

It describes suitable protection schemes and surge protective devices. The document also provides guidelines for bonding the RRU, protection module, DC power cable, BBU, and ...

[Request Quote](#)





Surge Protection for Cell Sites

This is why the standard DIN EN 62305 (IEC 62305) mandates a type 1 lightning current arrester at the boundary between lightning protection zone 0 B and 1. In mobile ...

[Request Quote](#)

How to make lightning protection design of residential PV ...

In short, spend time considering your PV system lightning protection, because meticulous care and attention in the design & installation stage can avoid many problems later. ...

[Request Quote](#)



Communication Base Station (Independent Station) Lightning Protection

This solution simplifies the complex base station ground network engineering by using the equipment method, and completely isolates the impact between lightning protection grounding, ...

[Request Quote](#)

Communication Network GSM-Base Stations and Lightning Effect

The protection of GSM and base station towers from lightning and overvoltage is provided by integrating external lightning systems, internal lightning systems, earthing, equipotential ...

[Request Quote](#)



Lightning protection, earthing and surge protection of base

An effective lightning protection design for a telecommunication facility requires an integrated approach to a number of key factors: Protection against direct

[Request Quote](#)



K.97

It describes suitable protection schemes and surge protective devices. The document also provides guidelines for bonding the RRU, protection module, ...

[Request Quote](#)



Lightning protection guide

The matched, safe and tested lightning protection systems from OBO Bettermann protect people, buildings and property. OBO can offer the right selection of products, depending on ...

[Request Quote](#)

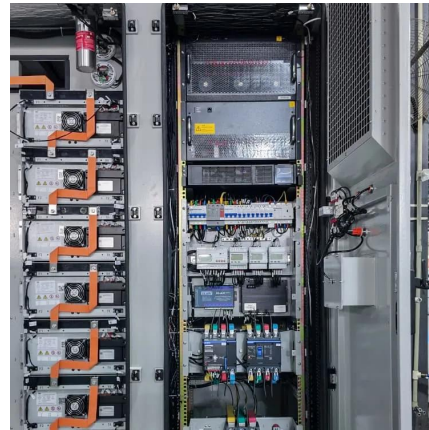




Overvoltage Protection

The internal lightning protection provides equipotential bonding between metal installations and cables within the system. Metal and conductive system parts, e.g. water pipes, are connected ...

[Request Quote](#)



The hospital hostage case that changed the American health care system

The hospital hostage case that changed the American health care system Amazing top movie 2025 aardvark abacus abbey abdomen ability abolishment abroad accelerant accelerator accident accompanist accordion account accountant achieve achiever acid acknowledgment acoustic ...

[Request Quote](#)

LIGHTNING PROTECTION SOLUTION FOR BASE STATION

The most important base station equipment is composed of highly integrated microelectronics components with high read/write speed, low voltage, and low power ...

[Request Quote](#)



Lightning protection for Telecommunication Stations

Lightning protection (strikes with indirect effects) for telecommunication stations by lightning arresters, is applicable for all electrical networks. It is also compulsory to provide protection ...



[Request Quote](#)

[How Base Station to Be Protected From Lightning](#)

The base station can be destroyed totally or some of the equipments to be damaged without proper lightning protection. Then how many ways to protect the base station ...

[Request Quote](#)



[Lightning introduction pathways and protection measures for](#)

Lightning is very destructive. Once a communication base station is struck by lightning, it is easy to cause damage to communication equipment and interrupt communication signals, which will ...

[Request Quote](#)

Contact Us

For catalog requests, pricing, or partnerships, please visit:
<https://www.espaciovet.es>