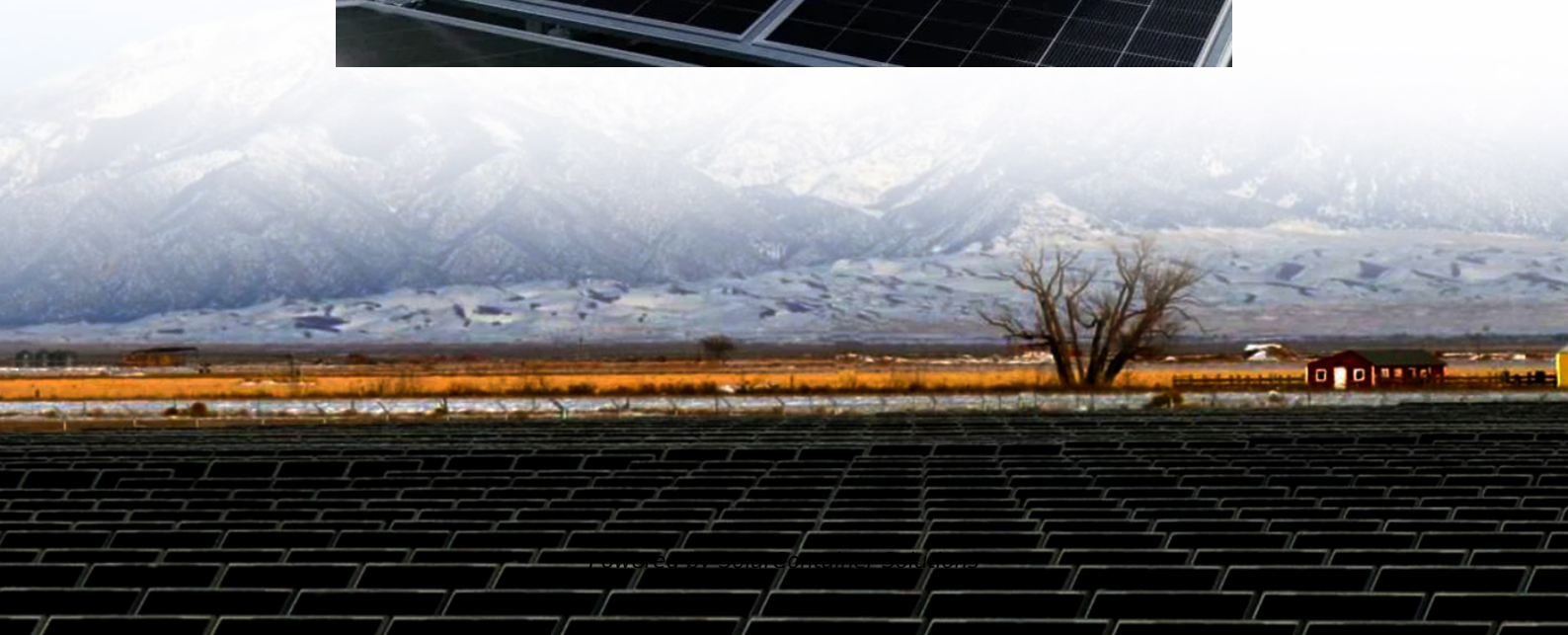


Difference between 220w and 12v inverter





Overview

1- What appliance(s) do you need to power?

What is the Wattage of each appliance?

2- Do the appliances need to run at the same time?

If so, add the wattages together (wattage is usually printed on t.

What is a 12V DC to 220V AC inverter?

Inverters (sometimes called power inverters) are just a class of electronic devices called power electronics that convert direct current into alternating current. Scientifically speaking, the transformer in an inverter must have a 1:19 turn ratio in order to convert 12V DC to 220V AC.

Should I choose a 12V or 24V inverter?

Moreover, a 24V battery bank can support larger systems with ease. The choice between a 12V and a 24V inverter also affects the cost and size of the cabling used in your power system. Cables play a crucial role in transmitting power from the battery bank to the inverter and from the inverter to your home's electrical panel.

Can a 12V battery run a 220V AC?

The result is that the 12V DC input becomes 220V AC output. PowMr Store's inverter converts DC power from a 12V battery system to AC power, which can power your home electrical equipment properly and can run a variety of 220V appliances such as refrigerators, air conditioners, and televisions, etc.

How many watts can an inverter power continuously?

It's a common misconception that an inverter advertised as being 800 watts can power devices up to that amount continuously. In reality, companies advertise their inverters based on their peak outputs, not the output they can support over the long-term.



Why are 24V inverters more efficient?

This is because they need to convert a lower voltage DC source to AC power, which can result in more energy losses during the conversion process. 24V Inverter Efficiency: 24V inverters, on the other hand, are inherently more efficient as they work with a higher input voltage.

What is a power inverter?

A power inverter is a small box-looking gadget that inverts DC power into AC power by clamping onto the terminals of a battery. You can supply power to whatever is attached to a normal cord by plugging it into the inverter. It may seem straightforward to buy one, but with that being said.



Difference between 220w and 12v inverter



[Tips to Choose the Right Inverter for Homes: 12V or 24V](#)

Choose the Right Inverter with the difference between 12V or 24V and their advantages: inverter efficiency, battery bank setup, cabling cost, and overall solar power ...

[Request Quote](#)

[How does a 12V to 220V Inverter Work?](#)

Inverters (sometimes called power inverters) are just a class of electronic devices called power electronics that convert direct current into alternating current. Scientifically ...

[Request Quote](#)



[110V Vs. 120V: What Is The Major Difference?](#)

What is the real story about 110V vs. 120V? In the United States, there is no difference between a 110-volt outlet and a 120-volt outlet. The ...

[Request Quote](#)

12V DC to 120V AC Inverter Circuit

Here is a simple 12 volts DC to AC inverter circuit. This 120V AC power source is built with a simple 120V:24V or 110V:24V center-tapped ...



[Request Quote](#)



[Power Inverters Guide :: CompactAppliance](#)

Learn everything you could want to know about Power Inverters. Your guide to safety tips, common uses, battery basics, and how to choose the right size.

[Request Quote](#)



Inverters : 12V vs 24V?

If you want to run the inverter at any distance from the batteries, the difference between (say) 70A at 24v and 140A at 12v will be quite significant. Don't forget double the ...

[Request Quote](#)



[How does a 12V to 220V Inverter Work?](#)

If a 12V AC is converted to 220V, the turns ratio of the primary and secondary coils in the transformer in the inverter has to be 1:19. This process involves the knowledge of ...

[Request Quote](#)

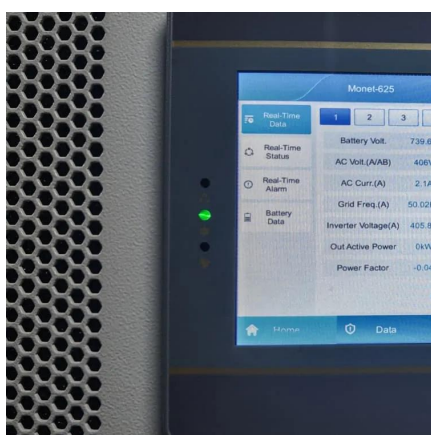




Choosing the Best Pure Sine Wave Inverter: A Comprehensive ...

When it comes to choosing an inverter for your off-grid solar system, understanding the difference between pure sine wave and modified sine wave inverters is crucial. Pure Sine ...

[Request Quote](#)



Types of Power Inverters And How To Choose

Hybrid inverter Hybrid inverters combine the functions of a stand-alone inverter and a grid-tied inverter. This type of inverter can effectively ...

[Request Quote](#)

12V to 120V Inverter: How It Works & What You Need ...

Learn how a 12V to 120V inverter works and why it matters to off-grid solar systems, RVs, and backup power. Get all the key details and pick ...

[Request Quote](#)



12V vs 24V: What's The Difference in Battery Systems?

When building a DC system for an RV, boat, or off-grid home, the big question is: do you really need 12V or 24V? For most small systems, 12V remains the standard. But as ...

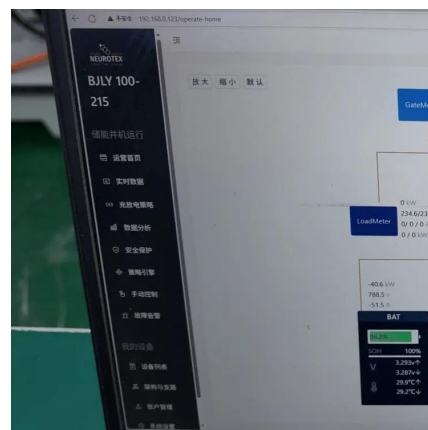
[Request Quote](#)



[what voltage are you running? 220V / 230V / 240V?](#)

Something came to mind recently, and I was rather curious, what output voltages do people run on their inverters? The default, which should be 230V, or do you adjust it down ...

[Request Quote](#)



Using 220V wiring for a 12V setup

I am living in a static house that uses a 220V system for lighting fridge etc, I wish to set my solar system up using 12V not 220, I have a gas fridge and don't need 220V, I will only ...

[Request Quote](#)

[Power Inverters Guide :: CompactAppliance](#)

Learn everything you could want to know about Power Inverters. Your guide to safety tips, common uses, battery basics, and how to choose ...

[Request Quote](#)





[How does a 12V to 220V Inverter Work?](#)

If a 12V AC is converted to 220V, the turns ratio of the primary and secondary coils in the transformer in the inverter has to be 1:19. This process ...

[Request Quote](#)

[How do I choose a Power Inverter: Buyer's Guide](#)

Final note: There's a difference between running watts and starting watts. Some appliances (especially those with their own pumps and motors) have an initial starting wattage that may ...

[Request Quote](#)



[Tips to Choose the Right Inverter for Homes: 12V or 24V](#)

Choose the Right Inverter with the difference between 12V or 24V and their advantages: inverter efficiency, battery bank setup, cabling cost, and ...

[Request Quote](#)



[How do I choose a Power Inverter: Buyer's Guide](#)

Final note: There's a difference between running watts and starting watts. Some appliances (especially those with their own pumps and motors) have an initial ...

[Request Quote](#)



220v AC or 12v DC?

Camp fridges can run of both 220V and 12V, but they are actually 12V. Thus use 12V when camping. Why step up to 220V while the fridge converts it back to 12V. But if 220V ...

[Request Quote](#)



Understanding Inverters and How-to Select one that is right for you

While actual output wattage of competitor's inverters varies greatly, Wagan Tech inverters help consumers to understand and trust that the number printed on the inverter is the actual ...

[Request Quote](#)



[What is the size of an Inverter 220V TO 12V?](#)

In this blog, I'm gonna break down everything you need to know about the size of a 220V to 12V inverter, including what factors affect it and how to choose the right size for your needs.

[Request Quote](#)





voltage

The question is, is there any sense (from energy efficiency perspective) to use an inverter and 220V lamps and other loads, if the required items can be had in 12V versions?

[Request Quote](#)



[What Is a 120V/240V Split-Phase Inverter Charger?](#)

Get to know the difference between 120V and 240V inverter chargers, how they work, and which Renogy inverter charger is best for me.

[Request Quote](#)

[What's the difference between RV Inverter and Converter](#)

With such similar names, the difference between RV inverter and converter can be confusing, but they are opposites. Keep reading to learn what converters and inverters do, ...

[Request Quote](#)



[RV Converter VS Inverter: What's the Difference?](#)

To understand the difference between an RV converter and an inverter, we must first grasp the basics of RV electrical systems. Your RV uses two types of electrical current: ...

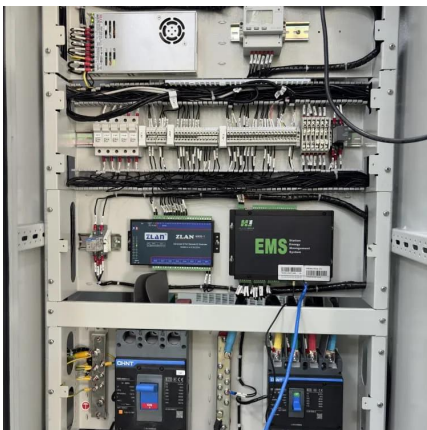
[Request Quote](#)



[Frequently Asked Questions About Power Inverters , DonRowe](#)

Short Answer: The size you choose depends on the watts (or amps) of what you want to run (find the power consumption by referring to the specification plate on the appliance or tool). We ...

[Request Quote](#)



[12v led lights vs 220 led lights , DIY Solar Power Forum](#)

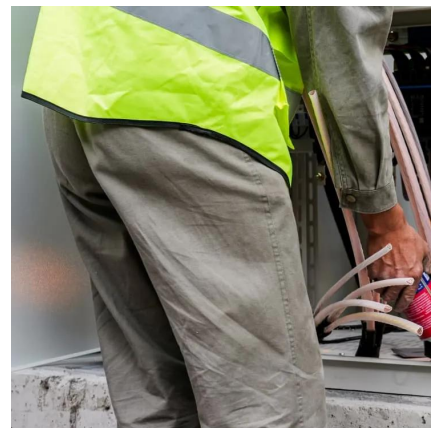
does anybody knows the difference in energy consumption of 12 v volts vs 220 v lights?, for exemplo if i have a 12v 16 watts led, and a 220v 16 watts led, will they consume the ...

[Request Quote](#)

[Understanding Inverters and How-to Select one that is ...](#)

A typical 12V automobile battery has 50-80 Amp Hours (Ah) capacity. For a 12 volt battery, 10.0 volts is considered a depleted battery and should be fully ...

[Request Quote](#)





Contact Us

For catalog requests, pricing, or partnerships, please visit:
<https://www.espaciovet.es>