

# **Difference between 300W and 450W solar photovoltaic panels**





## Overview

---

How much wattage does a solar panel take?

Solar panel sizes and wattage range from 250W to 450W, taking up 1.6 to 2 square metres per panel. One of the most important things to consider when getting solar panels for your home is the specific solar panel size and dimensions.

What are the different sizes of solar panels?

There are 3 standardized sizes of solar panels, namely: 60-cell solar panels size. The dimensions of 60-cell solar panels are as follows: 66 inches long, and 39 inches wide. That's basically a 66×39 solar panel. But what is the wattage?

That is unfortunately not listed at all. 72-cell solar panel size.

How big is a 300 watt solar panel?

A typical 300-watt solar panel is 65.8 inches long and 36.1 inches wide. It takes up 16.5 sq ft of area. If you have a 1000 sq ft roof, and you can use 75% of that roof area for solar panels, you can theoretically put 45 300-watt solar panels on a 1000 sq ft roof. A typical 400-watt solar panel is 79.1 inches long and 39.1 inches wide.

What is the wattage rating of a solar panel?

The Wattage rating of a solar panel is the most fundamental rating, representing the maximum power output of the solar panel under ideal conditions. You'll often see it referred to as "Rated Power", "Maximum Power", or "Pmax", and it's measured in watts or kilowatts peak (kWp).

What is a good wattage solar panel?

High-quality residential solar installations in the US typically utilize solar panels rated between 250W and 430W. While lower-wattage solar panels (below 250W) may work for small, off-grid systems, higher-wattage solar



panels are better suited for commercial or utility installations with fewer space restraints than residential rooftops.

How big should a commercial solar panel be?

For commercial solar panel installations, panels often range from 400W to 600W, with dimensions of approximately 195 x 99 x 3.81 cm (6.40 x 3.25 x 0.13 feet). Several factors affect the size of a solar panel, including the type of solar cells used, the desired wattage output, your property's size and the panel's overall efficiency.



## Difference between 300W and 450W solar photovoltaic panels

---



### [Guide to Solar Panel Size and Wattage: Choosing the ...](#)

A guide about solar panel size and solar panel wattage. The right home solar power system design will give you the most savings and best ...

[Request Quote](#)

### [Are 500-Watt Solar Panels The Best Option?](#)

A 500-watt solar panel will produce 2 kilowatt-hours (kWh) of daily power in typical conditions. They have an efficiency rating of around 21%.

[Request Quote](#)



### [Solar panel size range: From tiny to large](#)

Which solar panel should you choose for your needs, a big one or a tiny one? Is there such a thing as a standard solar panel size? Learn more ...

[Request Quote](#)



### [How many watts is the best solar panel? , NenPower](#)

In summary, determining the optimal wattage of a solar panel requires careful consideration of



various factors, including individual energy ...

[Request Quote](#)



## [Solar Panel Sizes and Wattage Explained](#)

Additionally, you can compare pricing, brands and options by viewing solar kit sizes. Remember that you decide how many solar panels to ...

[Request Quote](#)



## [Solar Panel Sizes and Wattage Explained](#)

Typically, lower-wattage panels are more compact and portable, whereas the higher-wattage ones are often larger and less common. Now, after all this explanation, the ...

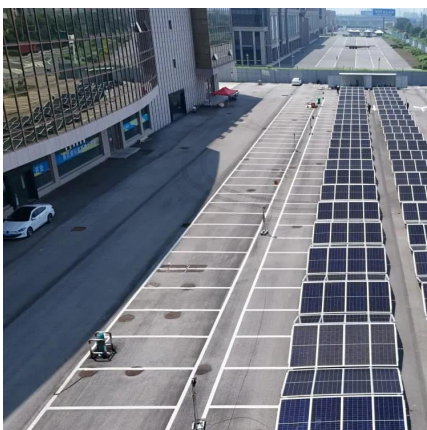
[Request Quote](#)



## **Most efficient solar panels 2025**

As explained below, solar panel efficiency is determined by two main factors: the photovoltaic (PV) cell efficiency, which is based on the solar ...

[Request Quote](#)







## Compare Solar Panels

Find prices for solar panels and compare technical specifications of various brands and models of modules in our regularly updated solar panel comparison table.

[Request Quote](#)



## [100W vs. 300W Solar Panels: Differences and Making ...](#)

Find out the differences between 100W and 300W solar panels with our comprehensive blog. Learn about power output, size, cost, lifespan, and more ...

[Request Quote](#)

## [Guide to Solar Panel Sizes & Dimensions \(August 2025\)](#)

Solar panel sizes and wattage range from 250W to 450W, taking up 1.6 to 2 square metres per panel. One of the most important things to ...

[Request Quote](#)



## Most efficient solar panels 2025

As explained below, solar panel efficiency is determined by two main factors: the photovoltaic (PV) cell efficiency, which is based on the solar cell design and the type of silicon ...

[Request Quote](#)



## [Trina Solar Panels: An Independent Review by Solar ...](#)

Important Note: Prices will vary depending on location, inverter brand and which installer is used Trina Solar Panels - Points of Difference ...

[Request Quote](#)



## **Solar Panel Ratings Explained - Wattage, Current, Voltage, and**

Different electrical ratings (Watt, Amps, and Volts) can necessitate different equipment, and certain panels may be better suited for particular applications and ...

[Request Quote](#)

## [How Much Electricity Does a Solar Panel Produce?](#)

Standard Solar Panel Power Ratings Current UK residential installations typically feature panels rated between 300W and 450W, with newer systems offering improved ...

[Request Quote](#)





### [Canadian Solar 300W Solar Panel 60 cell CS6K...](#)

Canadian Solar 300W Solar Panels 60 cell CS6K-300MS-T4 with Mono-PERC cells significantly improve efficiency and reliability. Look into ...

[Request Quote](#)

### [Standard Solar Panel Sizes And Wattages \(100W ...](#)

To bridge that gap of very useful knowledge needed, we have compared and averaged the sizes of 100-watt to 500-watt solar panels available on the ...

[Request Quote](#)



### [Standard Solar Panel Sizes And Wattages \(100W-500W ...](#)

To bridge that gap of very useful knowledge needed, we have compared and averaged the sizes of 100-watt to 500-watt solar panels available on the market. The goal here is to get to the ...

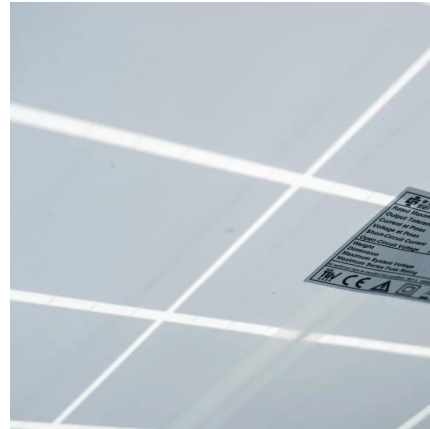
[Request Quote](#)

### [Guide to Solar Panel Sizes & Dimensions in the UK](#)

3. What size solar panel system is best for a 3-bedroom house in the UK? Answer: For a 3-bedroom house in the UK, a 4kW to 5kW solar panel system is usually ideal, consisting of 10 ...

[Request Quote](#)

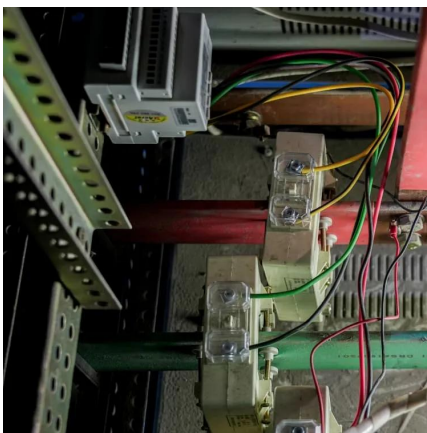




### [How many watts is the best solar panel? NenPower](#)

In summary, determining the optimal wattage of a solar panel requires careful consideration of various factors, including individual energy consumption, available installation ...

[Request Quote](#)



### [Key Features and Common Questions on Trina ...](#)

Trina Solar's Vertex S+ 440W is a clear and bifacial solar panel that not only performs excellently but also looks great, especially on black rooftops. ...

[Request Quote](#)



### [Solar Panel Sizes and Wattage Explained](#)

Typically, lower-wattage panels are more compact and portable, whereas the higher-wattage ones are often larger and less common. Now, ...

[Request Quote](#)





## Choosing panels

Using landscape instead of portrait layout is also possible. The issue is that smaller panels are 1.7m high, large panels are 2.3m high. A 6m roof will not take 3 rows of 2.3m ...

[Request Quote](#)



## [Solar Panel Sizes & Dimensions \(SA\): Simply ...](#)

Solar panel dimensions & sizes (SA): Simply explained When it comes to investing in solar energy, choosing the right solar panel size is bottom-line. ...

[Request Quote](#)

## [Solar Panel Ratings Explained - Wattage, Current, ...](#)

Different electrical ratings (Watt, Amps, and Volts) can necessitate different equipment, and certain panels may be better suited for particular ...

[Request Quote](#)



## 450 Watt Solar Panel Guide: Best Models, Performance & Tips ...

Complete guide to 450W solar panels. Compare top models, understand performance specs, and find the best panels for your needs. Expert analysis & buying advice.

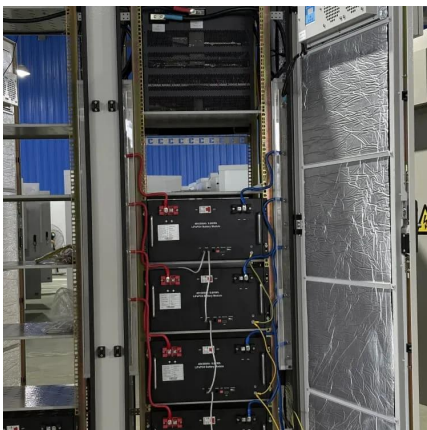
[Request Quote](#)



## [2025 Expert Review of REC Solar Panels](#)

REC is a top-tier solar panel manufacturer that pioneered half-cut cell technology, which increases the energy output and efficiency of their solar panels.

[Request Quote](#)



## [Photovoltaic vs. Solar Panels: What's the Difference?](#)

In general, the difference between photovoltaic and solar panels is that photovoltaic cells are the building blocks that make up solar panels. Solar panels are made up of many individual ...

[Request Quote](#)

## [Solar Panel Dimensions Sizes and Wattage](#)

Solar panel dimensions is an essential criterion to consider when planning a photovoltaic solar installation. So, how big is a solar panel?

[Request Quote](#)





## [Solar Panel Sizes & Dimensions in the UK \(2025\)](#)

Solar Panel Sizes When speaking about a solar panel's size, people can often become confused. Solar panel size can refer to the power it ...

[Request Quote](#)

## **Guide to Solar Panel Size and Wattage: Choosing the Right Panel**

...

A guide about solar panel size and solar panel wattage. The right home solar power system design will give you the most savings and best energy efficiency.

[Request Quote](#)



## [Guide to Solar Panel Sizes & Dimensions \(August 2025\)](#)

Solar panel sizes and wattage range from 250W to 450W, taking up 1.6 to 2 square metres per panel. One of the most important things to consider when getting solar ...

[Request Quote](#)



## **Contact Us**

---

For catalog requests, pricing, or partnerships, please visit:  
<https://www.espaciovet.es>