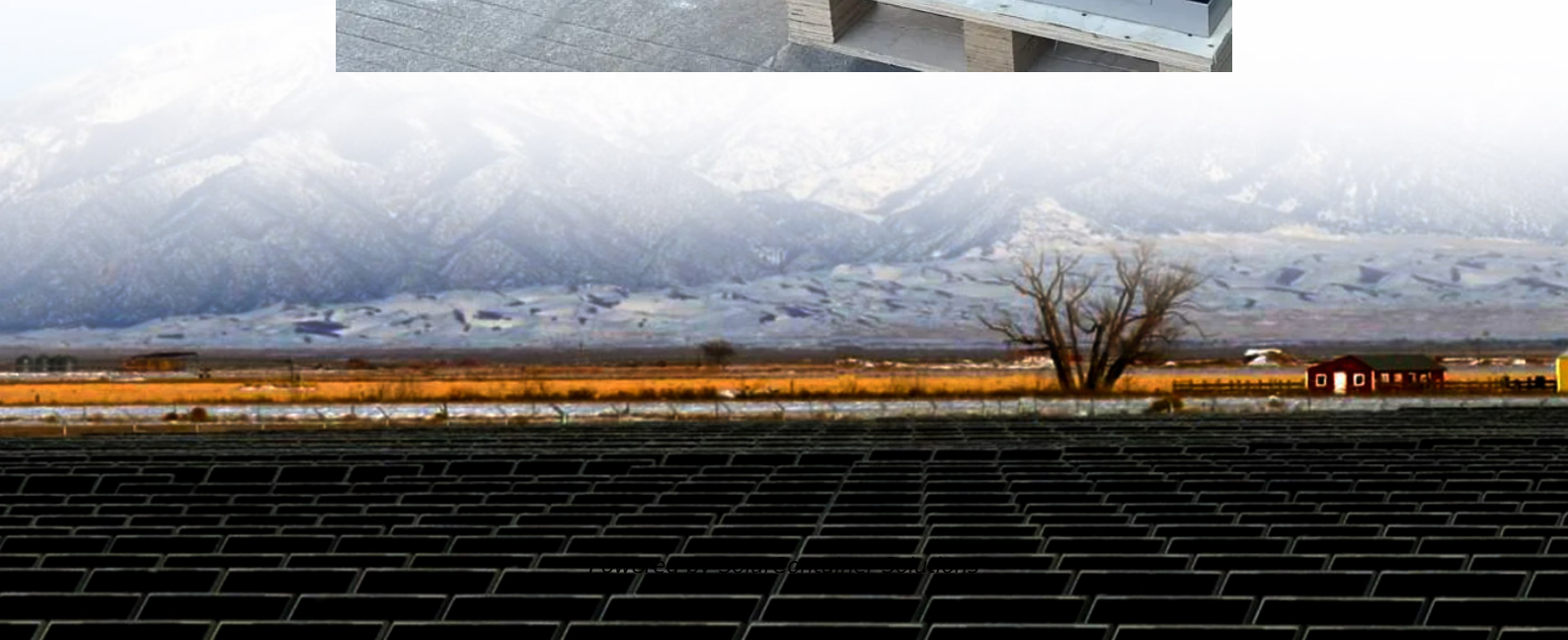


Does Huawei s 5G base station consume a lot of electricity





Overview

Energy consumption per unit of data (watt/bit) is much less for 5G than 4G, but power consumption is much higher. In the 5G era, the maximum energy consumption of a 64T64R active antenna unit (AAU).

How much power does a 5G station use?

The power consumption of a single 5G station is 2.5 to 3.5 times higher than that of a single 4G station. The main factor behind this increase in 5G power consumption is the high power usage of the active antenna unit (AAU). Under a full workload, a single station uses nearly 3700W.

Are 5G base stations causing more energy consumption?

However, Li says 5G base stations are carrying five times the traffic as when equipped with only 4G, pushing up power consumption. The carrier is seeking subsidies from the Chinese government to help with the increased energy usage.

Why does 5G use more power than 4G?

The data here all comes from operators on the front lines, and we can draw the following valuable conclusions: The power consumption of a single 5G station is 2.5 to 3.5 times higher than that of a single 4G station. The main factor behind this increase in 5G power consumption is the high power usage of the active antenna unit (AAU).

Does China Mobile have a 5G base station?

China Mobile has tried using lower cost deployments of MIMO antennas, specifically 32T32R and sometimes 8T8R rather than 64T64R, according to MTN. However, Li says 5G base stations are carrying five times the traffic as when equipped with only 4G, pushing up power consumption.

How will 5G affect the energy consumption of mobile operators?

Edge compute facilities needed to support local processing and new internet of things (IoT) services will also add to overall network power usage. Exact



estimates differ by source, but MTN says the industry consensus is that 5G will double to triple energy consumption for mobile operators, once networks scale.

Will 5G double to Triple energy consumption?

Exact estimates differ by source, but MTN says the industry consensus is that 5G will double to triple energy consumption for mobile operators, once networks scale. Warnings of more power consumption are coming from some Chinese operators that are leading the world in 5G deployments.



Does Huawei's 5G base station consume a lot of electricity



[5G base stations use a lot more energy than 4G base ...](#)

A typical 5G base station consumes up to twice or more the power of a 4G base station, writes MTN Consulting Chief Analyst Matt Walker in a ...

[Request Quote](#)

[Power consumption based on 5G communication](#)

At present, 5G mobile traffic base stations in energy consumption accounted for 60% ~ 80%, compared with 4G energy consumption increased three times. In the future, high-density ...

[Request Quote](#)



[Why does 5g base station consume so much power ...](#)

Huawei and ZTE's 5G base stations have a 100% load power consumption of 3852.5W and 3674.85W, respectively, while ZTE's 4G base ...

[Request Quote](#)

How energy-efficient are Huawei's 5G base stations compared to ...

Energy Consumption Comparison 4G vs. 5G Base Stations Power Consumption: Huawei's 5G base



stations have significantly lower power consumption compared to their 4G counterparts.

...

[Request Quote](#)



5G, Innovates for Good

[Shenzhen, China, April 14, 2021] At the 2021 Huawei Global Analyst Summit (HAS2021), Daisy Zhu, Vice President of Huawei's Wireless Network Marketing Department, delivered a keynote ...

[Request Quote](#)

5G and Energy Efficiency

The following aspects of 5G deployment are the main drivers expected to lead to higher energy consumption (up to 1000 times as much energy5): > A denser base station infrastructure than ...

[Request Quote](#)



[5G Transmit Power and Antenna radiation](#)

The use of such high frequencies is expected to increase the number of mobile antenna stations needed to cover the same geographical areas. But how are ...

[Request Quote](#)



Huawei will launch lowest power consumption 5G base station, ...

Through joint verification, the China Mobile Research Institute and Huawei found that this solution substantially reduces network energy consumption, with an average energy ...

[Request Quote](#)



What is huawei base station

Huawei's base stations, such as the DBS5900 and DBS3900, are advanced wireless access devices designed to support various network technologies, including 4G LTE and 5G NR. ...

[Request Quote](#)

[Huawei will launch lowest power consumption 5G ...](#)

Through joint verification, the China Mobile Research Institute and Huawei found that this solution substantially reduces network energy consumption ...

[Request Quote](#)



5G Power: Creating a green grid that slashes costs, emissions & energy use

Energy consumption per unit of data (watt/bit) is much less for 5G than 4G, but power consumption is much higher. In the 5G era, the maximum energy consumption of a 64T64R ...

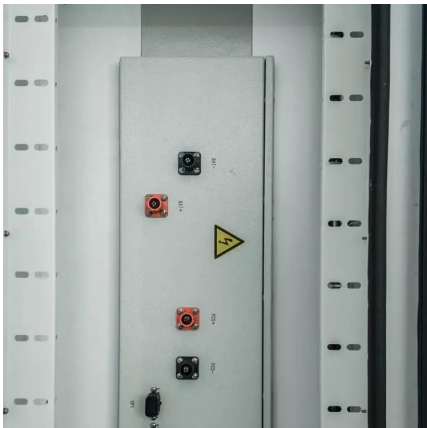
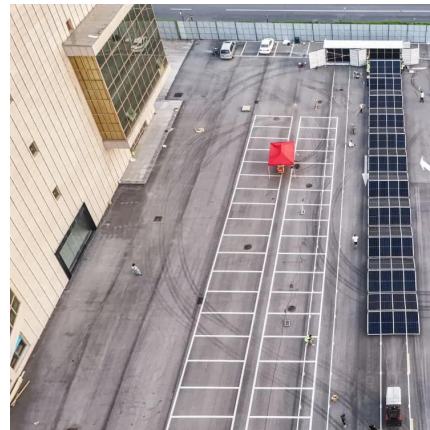
[Request Quote](#)



What is the Power Consumption of a 5G Base Station?

These 5G base stations consume about three times the power of the 4G stations. The main reason for this spike in power consumption is the addition of massive MIMO and ...

[Request Quote](#)



Case Study: China Tower & Huawei

As the deployment of 5G continues, the energy consumption of base stations increased significantly and the number of base stations soars. These lead to a sharp increase in ...

[Request Quote](#)

How Much Power Does 5G Base Station Consume?

Have you ever wondered how much energy our hyper-connected world is consuming? 5G base stations, the backbone of next-gen connectivity, now draw 3-4 times more power than their 4G ...

[Request Quote](#)





Case Study: China Tower & Huawei

As the deployment of 5G continues, the energy consumption of base stations increased significantly and the number of base stations soars. These lead to a ...

[Request Quote](#)

[Front Line Data Study about 5G Power Consumption](#)

The power consumption of a single 5G station is 2.5 to 3.5 times higher than that of a single 4G station. The main factor behind this increase in 5G power consumption is the high power ...

[Request Quote](#)



[Energy-efficient 5G for a greener future](#)

Compared to earlier generations of communication networks, the 5G network will require more antennas, much larger bandwidths and a higher density of base stations. As a ...

[Request Quote](#)

[Power Consumption: 5G Basestations Are Hungry, Hungry Hippos](#)

Power Consumption: 5G Basestations Are Hungry, Hungry Hippos 5G basestations are pushing up power requirements by three times, as MIMO and more digital circuitry require ...

[Request Quote](#)



[Huawei Launches World's First 5G Base Station Core ...](#)

All base station units use the blade form factor, and different modules can be combined as needed, making 5G base station installation as ...

[Request Quote](#)



Why does 5g base station consume so much power and how to ...

Huawei and ZTE's 5G base stations have a 100% load power consumption of 3852.5W and 3674.85W, respectively, while ZTE's 4G base station has a power consumption ...

[Request Quote](#)



Quantifying the energy cost savings from 2G/3G network shutdowns

Many telcos publish data on their energy consumption, and sometimes provide breakdowns for different parts of the network. But there are no existing estimates on the specific impact of ...

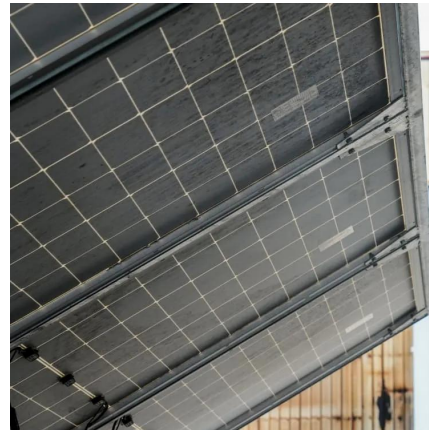
[Request Quote](#)



[Size, weight, power, and heat affect 5G base station ...](#)

Engineers designing 5G base stations must contend with energy use, weight, size, and heat, which impact design decisions.

[Request Quote](#)



5G base stations use a lot more energy than 4G base stations: MTN

A typical 5G base station consumes up to twice or more the power of a 4G base station, writes MTN Consulting Chief Analyst Matt Walker in a new report entitled " Operators ...

[Request Quote](#)

How much power does 5G consume?

When base stations, data centers and devices are added together, telecommunications will consume more than 20% of the world's electricity by ...

[Request Quote](#)



Comparison of Power Consumption Models for 5G Cellular Network Base

This paper conducts a literature survey of relevant power consumption models for 5G cellular network base stations and provides a comparison of the models. It highlights ...

[Request Quote](#)



How energy-efficient are Huawei's 5G base stations compared to ...

Huawei's 5G base stations are more energy-efficient than previous generation equipment due to advanced power management, efficient hardware designs, and the use of smaller cells. They ...

[Request Quote](#)



How much power does 5G consume?

When base stations, data centers and devices are added together, telecommunications will consume more than 20% of the world's electricity by 2025, says Huawei analyst Dr. Anders ...

[Request Quote](#)

How Much Power Does a 5G Base Station Consume? - Smart Solar

The rise of 5G technology brings faster speeds and lower latency, but it also raises questions about its energy consumption. As 5G networks are rolled out across the globe, it is important ...

[Request Quote](#)





The 5G Dilemma: More Base Stations, More Antennas--Less Energy?

A lurking threat behind the promise of 5G delivering up to 1,000 times as much data as today's networks is that 5G could also consume up to 1,000 times as much energy. ...

[Request Quote](#)

Contact Us

For catalog requests, pricing, or partnerships, please visit:
<https://www.espaciovet.es>