

Does the lithium battery have a BMS system





Overview

Most lithium batteries come with a built-in management system (BMS). This system protects the battery from overcharging and discharge. It also monitors the battery temperature to prevent overheating. However, there are some chargers that do not have a BMS. Why do lithium batteries need BMS?

Home > News of Winston Battery/LiFePO4 > Why do lithium batteries need BMS, and what is BMS?

The Battery Management System (BMS) is used to manage batteries. It usually measures the Battery voltage to prevent over-discharge, overcharge, and overtemperature of the battery. With the development of technology, many features have been gradually added.

What is lithium battery management system (BMS)?

Lithium Battery □ Battery Management System (BMS) Explained Lithium batteries are very useful and many of the products we use every day are powered by them, like golf carts, power wheels, trolling motor, RV, etc. While, it is difficult to manage the battery because of the complex design.

What happens if a lithium ion battery does not have a BMS?

Without a BMS, lithium-ion batteries can overcharge or over-discharge. This condition can lead to battery damage or even fires. A BMS optimizes the charging process, ensuring longer battery life. It prevents abuse by balancing the charge across individual cells.

Why do we need a battery management system (BMS)?

Lithium batteries are very useful and many of the products we use every day are powered by them, like golf carts, power wheels, trolling motor, RV, etc. While, it is difficult to manage the battery because of the complex design. And the its performance will degrade with the frequent use. A battery management system (BMS) can help in this situation.



How does a battery BMS work?

Advanced BMS systems may also monitor parameters such as internal impedance and electrolyte concentration to more accurately assess battery status. Using collected data and advanced algorithm models (such as Kalman filtering and neural networks), lithium battery BMS accurately estimates the SOC and SOH of the battery pack.

How do I choose a battery management system for lithium-ion batteries?

Selecting a Battery Management System (BMS) for lithium-ion batteries requires careful consideration of specific features. The key features you should consider are as follows: These features may vary in importance depending on the specific application and usage environment of the battery system.



Does the lithium battery have a BMS system



Why do lithium batteries need BMS, and what is BMS?

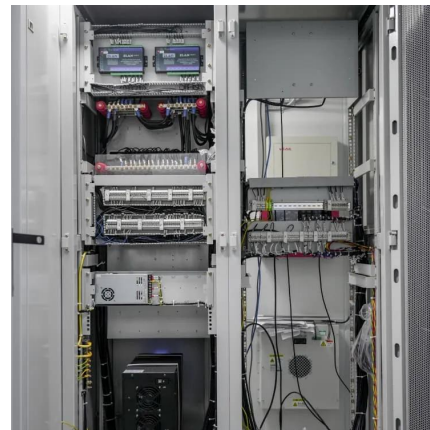
It usually measures the Battery voltage to prevent over-discharge, overcharge, and overtemperature of the battery. With the development of technology, many features have been ...

[Request Quote](#)

Lithium Battery? Battery Management System (BMS) Explained

BMS is the abbreviation of Battery Management System. It is a battery management device mainly used to monitor, protect and manage the the battery system helps improve the safety ...

[Request Quote](#)



Do All Lithium Batteries Have a Built-in BMS?

A Battery Management System (BMS) is an essential component in many lithium battery applications. It ensures the safe operation of the battery by monitoring its voltage, ...

[Request Quote](#)



What is a BMS? What does it do and where is it located?

What is a BMS? What does it do and where is it located? BMS stands for Battery Management



System. The BMS protects the cells from getting damaged -- most commonly from over or ...

[Request Quote](#)



What Is BMS on a Lithium Battery? A Complete Guide to Its Role

Yes, in nearly all practical applications. Reasons include: Safety - Prevents thermal runaway and electrical faults.

[Request Quote](#)

What Is A BMS (Battery Management System)?

A battery management system is the "brain" of battery, which is critical for safety and operation. Here's a deep dive on the BMS.

[Request Quote](#)



How does lithium battery BMS determine the battery's safety, life ...

Based on real-time battery status, user demands, and environmental conditions, lithium battery BMS precisely controls the lithium battery charging and discharging process.

[Request Quote](#)



BMS on battery or BMS on inverter

The Inverter DOES NOT have a built in Battery Management System. The BMS is part of the battery since there may be several batteries connected to 1 inverter. Each battery ...

[Request Quote](#)



[Battery Management Systems \(BMS\): A Complete Guide](#)

Battery Management Systems (BMS) With the growing adoption of electric vehicles (EVs), renewable energy storage, and portable electronic ...

[Request Quote](#)

[How To Choose A BMS For Lithium Batteries](#)

With that being said, a lithium-ion battery pack should never be used without a BMS. The BMS is what prevents your battery cells from being ...

[Request Quote](#)



[Lithium for Beginners: All About Battery Management ...](#)

Here at Battle Born Batteries, we stand behind the products that we build. Backed by a 10-year warranty, our batteries are also internally ...

[Request Quote](#)



How does lithium battery BMS determine the battery's ...

Based on real-time battery status, user demands, and environmental conditions, lithium battery BMS precisely controls the lithium ...

[Request Quote](#)



Why do lithium batteries need BMS, and what is BMS?

It usually measures the Battery voltage to prevent over-discharge, overcharge, and overtemperature of the battery. With the development of technology, ...

[Request Quote](#)

Understanding the Role of the BMS in Modern Lithium Batteries

The Battery Management System is an electronic circuit board built into or attached to a lithium battery pack. Its primary function is to monitor, manage, and protect the battery cells during ...

[Request Quote](#)





[Your Guide to Battery Management Systems \(BMS\)](#)

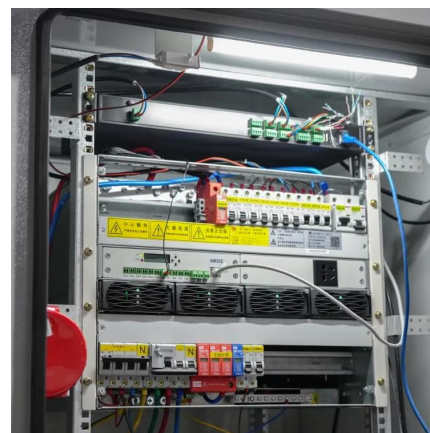
Lithium-ion batteries are expensive. So, make sure you protect them with a battery management system (BMS). This guide explores how a BMS works.

[Request Quote](#)

[The Battery Management System: How It Enhances ...](#)

A battery management system (BMS) is an electronic system that monitors, manages, and protects rechargeable batteries. The BMS ensures ...

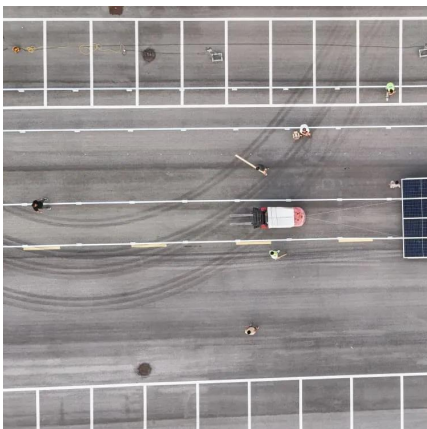
[Request Quote](#)



[Battery Management System \(BMS\) Detailed Explanation: ...](#)

Battery Management System (BMS) is the "intelligent manager" of modern battery packs, widely used in fields such as electric vehicles, energy storage stations, and consumer ...

[Request Quote](#)



What is a BMS? , Batteries Plus

Learn what battery management systems (BMS) are and why they are so important in lithium deep-cycle and lithium powersport batteries.

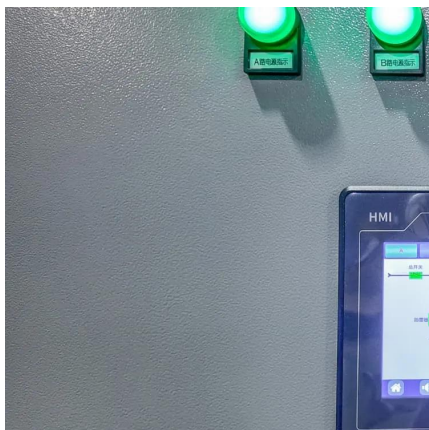
[Request Quote](#)



[Do you really need a BMS for lithium batteries? , Redway](#)

In the evolving world of battery technology, the debate over whether a Battery Management System (BMS) is necessary for lithium batteries remains prominent. This guide ...

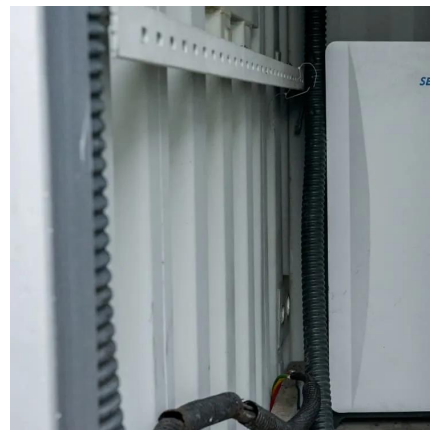
[Request Quote](#)



[Do you really need a BMS for lithium batteries? , Redway](#)

What is a Battery Management System (BMS)? A Battery Management System (BMS) is a crucial component in lithium battery technology. It is designed to monitor and ...

[Request Quote](#)



[\[Full Guide\] What is LiFePO4 Battery Management System?](#)

A LiFePO4 Battery Management System (BMS) is an essential device in managing batteries, especially in small and portable electronic devices. It ensures that ...

[Request Quote](#)





Does BMS Have Low Voltage Cutoff?

Yes, a Battery Management System (BMS) typically includes a low voltage cutoff feature. This function is essential for protecting lithium batteries from over-discharging, which ...

[Request Quote](#)



[How To Choose A BMS For Lithium Batteries](#)

With that being said, a lithium-ion battery pack should never be used without a BMS. The BMS is what prevents your battery cells from being drained or charged too much. ...

[Request Quote](#)

[Do All Lithium Batteries Have a Built-in BMS?](#)

Most modern lithium batteries designed for specific applications come equipped with a BMS: Lithium Iron Phosphate (LiFePO4): Commonly used in solar energy systems and ...

[Request Quote](#)



[Lithium Battery?Battery Management System \(BMS\) ...](#)

BMS is the abbreviation of Battery Management System. It is a battery management device mainly used to monitor, protect and manage the the ...

[Request Quote](#)



[Do I Need a BMS for Lithium-Ion Batteries? Benefits and ...](#)

A Battery Management System (BMS) is a system that monitors and manages a lithium-ion battery pack. It ensures the safe and efficient operation of the battery by balancing ...

[Request Quote](#)



[How Do I Choose a BMS for a Lithium-Ion Battery?](#)

A BMS monitors and manages the various aspects of battery operation, including charging, discharging, and overall health. In this comprehensive guide, we will explore the key ...

[Request Quote](#)

Contact Us

For catalog requests, pricing, or partnerships, please visit:
<https://www.espaciovet.es>