

# **How big an inverter can a 12v 200a be connected to**





## Overview

---

You can run an inverter rated between 1500W and 2400W off a 200Ah lithium battery depending on voltage and usage. Typically, a 12V 200Ah battery supports up to about 2400W, while higher voltage configurations like 24V or 48V allow larger inverter sizes.



## How big an inverter can a 12v 200a be connected to

---



### [What Size Inverter Can I Run Off a 200Ah Battery?](#)

Suitable inverters for a 200Ah battery should match the system voltage (e.g., 12V) and handle the desired load power. Pure sine wave inverters are often preferred for sensitive electronics.

[Request Quote](#)

### [What Size Inverter Can I Run Off a 200Ah Lithium Battery?](#)

A 200Ah lithium battery at 12V supports inverters up to about 2400W; 24V and 48V models support larger inverters up to 4000W and 8000W respectively. Always use pure ...

[Request Quote](#)



### [What Size Battery Do I Need to Run a 2000W Inverter?](#)

To run a 2000W inverter, you need to consider the appropriate battery size to ensure optimal performance and efficiency. Generally, for a 2000W inverter, a battery capacity of at least ...

[Request Quote](#)



### [How Many Batteries for a 2000 watt Inverter?](#)

Do you need to know how many batteries you need for a 2,000W inverter? Read this article for



calculations and diagrams of different battery ...

[Request Quote](#)



## What are you able to run with 200ah of battery? : r/vandwellers

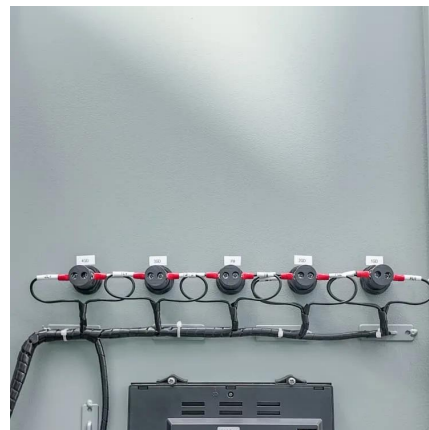
A bad connection can use power and worse. 12 volt systems have higher current than 24 or 48 volt systems. Thermal runaway is not something you want to have happen.

[Request Quote](#)

## [Can an Inverter Be Too Big for Your Battery System?](#)

How to Calculate the Right Inverter Size for Your Battery Match the inverter's continuous wattage rating to the battery's discharge capacity. For a 12V 200Ah battery (2.4kWh), a 2000W inverter ...

[Request Quote](#)



## [Choosing the Best Inverter Size for a 200Ah Lithium ...](#)

To calculate the wire and fuse size needed for the inverter you would take the inverter wattage, divide by 12V, then divide by 85% efficiency.

[Request Quote](#)

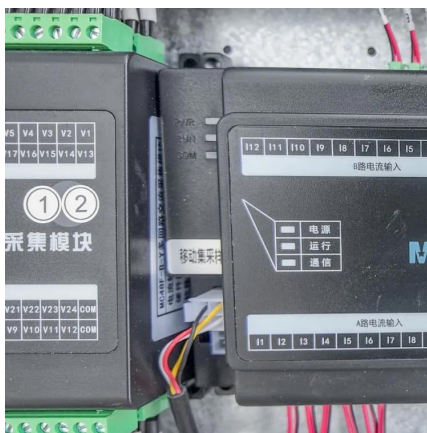




## What Inverter Size is Best for a 100Ah Battery?

Understanding the Basics What is an Inverter? An inverter converts DC (Direct Current) power from your battery into AC (Alternating Current) power, which is used by most household ...

[Request Quote](#)



## What Size Inverter Do I Need for a 200Ah Lithium Battery

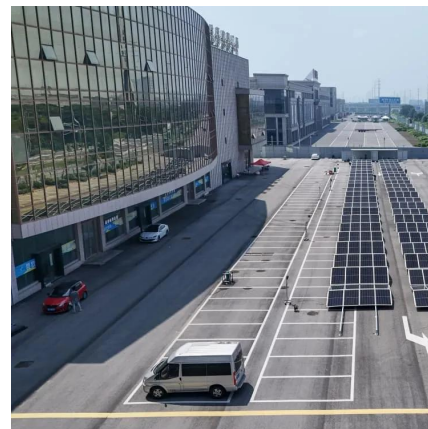
For a 12V 200Ah lithium battery, a 1500W to 2000W inverter is recommended to ensure efficient performance with headroom for surge loads. Proper sizing enhances system ...

[Request Quote](#)

## What Size Inverter Do I Need for a 200Ah Lithium Battery

How do you determine the right size inverter for a 200Ah lithium battery? The ideal inverter size depends on your power needs and the ...

[Request Quote](#)



## What Size Inverter Do I Need for a 200AH Battery?

To determine the appropriate inverter size for a 200AH battery, you need to consider the total wattage of the devices you plan to power. A general rule is to choose an ...

[Request Quote](#)



## Which Inverter is Suitable for a 200Ah Battery?

For a 12V 200Ah battery, a 1000W inverter is generally a good choice. This size can power a variety of household devices, ensuring that the battery isn't over-consumed and ...

[Request Quote](#)



## **Calculate Battery Size For Any Size Inverter (Using Our Calculator)**

So I have made it easy for you, use the calculator below to calculate the battery size for 200 watt, 300 watt, 500 watt, 1000 watt, 2000 watt, 3000 watt, 5000-watt inverter

[Request Quote](#)

## **Calculate Battery Size For Any Size Inverter (Using Our Calculator)**

How to Calculate the Right Inverter Size for Your Battery Match the inverter's continuous wattage rating to the battery's discharge capacity. For a 12V 200Ah battery (2.4kWh), a 2000W inverter

...

[Request Quote](#)





## Correct method for wiring a 12V Battery, Inverter, and Charger?

This is my first DIY project using a LifePo4 battery. I purchased a LiTime 12V 230Ah Battery, 12V 2000W Inverter, and 12V 20A Lithium Battery Charger (14.6V). I'd like to ...

[Request Quote](#)

## [What Size Inverter You Need \(Calculations + Battery\)](#)

Inverters are made with different power capacities, depending on the size of the system you want to run. For this discussion, we are looking at a domestic inverter that you can ...

[Request Quote](#)



## What Size Inverter Do I Need?

Finding the proper inverter size for your needs is as simple as adding together the necessary wattages of the items that you're looking to power.

[Request Quote](#)

## [Fuse size and type between Inverter and Battery](#)

Unless you obtain a 24 volt inverter you can only use a 12v system. Running a 12v 4000 watt inverter at full power, even with two 200 Ah AGM in ...

[Request Quote](#)



### [Inverter that can do full 200A service? : r/SolarDIY](#)

There is no point in having a 48kVA (200A, 240V) PV inverter. You don't use that much power, even with a fully electric American house. Do some electric monitoring at your house and you'll ...

[Request Quote](#)



### [Can I connect 200Ah + 2 x 100Ah batteries in parallel?](#)

I was gonna connect them in both parallel and series to make a 24V 200Ah system, but 24V inverters are expensive. Can I instead connect all the batteries in parallel? I would ...

[Request Quote](#)



### [Adequate fuse size for my battery system?](#)

Hey guys, planning on using a 200ah 12v Ampere time lithium battery for my van and using 2/0 wire to connect to my lynx distributor, then ...

[Request Quote](#)



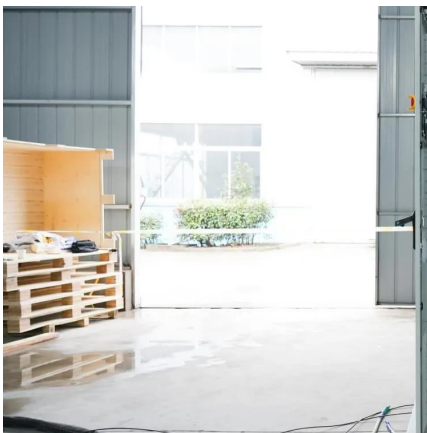




## Calculator

Step 3: Now to find out the size of the inverter i.e. VA - Voltage Ampere Rating (determines the maximum load the inverter can handle), we have to multiple the Power Factor with the Total ...

[Request Quote](#)



## [What Size Inverter Do I Need for a 200Ah Lithium Battery](#)

For a 12V 200Ah lithium battery, a 1500W to 2000W inverter is recommended to ensure efficient performance with headroom for surge loads. ...

[Request Quote](#)

## [What Size Inverter You Need \(Calculations + Battery\)](#)

Inverters are made with different power capacities, depending on the size of the system you want to run. For this discussion, we are looking at a ...

[Request Quote](#)



## [Can I Run a 2000W Inverter with a 200Ah Battery?](#)

How Big of a Battery Do I Need to Run a 2000W Inverter? If you're using a 2000W inverter, the size of the battery you need depends on how long you want the inverter to run ...

[Request Quote](#)



### [Choosing the Best Inverter Size for a 200Ah Lithium Battery](#)

When setting up an off-grid, solar, RV, or backup power system, one of the most critical decisions you'll make is choosing the best inverter size for your 200Ah lithium battery. ...

[Request Quote](#)



### [Choosing the Best Inverter Size for a 200Ah Lithium ...](#)

When setting up an off-grid, solar, RV, or backup power system, one of the most critical decisions you'll make is choosing the best inverter size ...

[Request Quote](#)



## Contact Us

---

For catalog requests, pricing, or partnerships, please visit:  
<https://www.espaciovet.es>