

How big can a 12 volt inverter be





Overview

Before we go any further, we highly recommend that you choose a pure sine wave inverter. This type of inverter delivers high-quality electricity, similar to your utility company. This way, none of your appliances run the risk of being damaged. Now, when it comes to sizing your inverter, you always need to check.

We have summarized the appliances that inverters from 300W to 3000W can run depending on their rated maximum power. Note to our readers: Use the above formula to determine.

The typical inverter sizes used for residential and commercial applications are between 1 and 10kW with 3 and 5kW sizes being the most common. With such an array of options, how do you find the right size for you?

An inverter works best when close to its capacity. What is a 12 volt inverter?

An inverter is a device that turns the power from a 12 volt DC battery, like the one in your car or truck, into the 120 volt AC power that runs all of the electronics in your house. You can use one of these devices to power all sorts of devices in your car, but it's important to figure out how big of an inverter you need first.

What size inverter do I Need?

The right size inverter for your specific application depends on how much wattage your devices require. This information is usually printed somewhere on electronic devices, although it may show voltage and amperage ratings instead.

What are the different solar inverter sizes?

Solar generators range in size from small generators for short camping trips to large off-grid power systems for a boat or house. Consequently, inverter sizes vary greatly. During our research, we discovered that most inverters range in size from 300 watts up to over 3000 watts. In this article, we guide you through the different inverter sizes.



How to calculate inverter size?

Using the Inverter Size Calculator is quick and easy. You'll need three inputs:
Total Wattage (W): This is the total power consumption of all the appliances or devices you plan to run through the inverter. Safety Factor: A multiplier to ensure some buffer above your actual power requirement. Typically ranges from 1.1 to 1.5.

How much power does an inverter need?

The continuous power requirement is actually 2250 but when sizing an inverter, you have to plan for the start up so the inverter can handle it. Third, you need to decide how long you want to run 2250 watts. Let's say you would like to power these items for an eight-hour period.

What is the power output of an inverter?

Power output is the maximum continuous power the inverter can supply to all the loads on the system. Exceeding the power rating by having a larger load (too many appliances) than the inverter can handle will cause it to shut down. The power output of a 3 kW inverter for example is 3000 watts (3 kW).



How big can a 12 volt inverter be



[How To Size An Inverter for Solar and Off Grid](#)

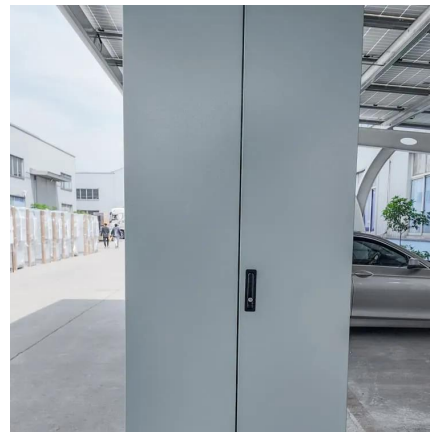
Sizing an inverter for your solar or off-grid solar project can be confusing, we are here to help you figure out exactly what you need.

[Request Quote](#)

[1500 Watt Heater: What Size Inverter & Solar Panel ...](#)

What size inverter for 1500 watt heater? To run a 1500-watt heater you need at least 2000 watt pure sine wave inverter. The inverter will convert ...

[Request Quote](#)



[What Size Inverter You Need \(Calculations + Battery\)](#)

Inverters are made with different power capacities, depending on the size of the system you want to run. For this discussion, we are looking at a domestic inverter that you can ...

[Request Quote](#)

[What Size Inverter You Need \(Calculations + Battery\)](#)

Inverters are made with different power capacities, depending on the size of the system



you want to run. For this discussion, we are looking at a ...

[Request Quote](#)



[What Size Inverter do I Need? \[with Examples\]](#)

This industrial-size inverter can power up practically any household appliance as long as you don't go over 5000-watts (minus 20%, to be on the safe side). If you want to become totally energy ...

[Request Quote](#)

[Best inverter for charging tool batteries](#)

What is the best inverter for charging Tool batteries? I want to put in the bed of the Super Duty under the Diamondback. I have been told by a truck ...

[Request Quote](#)



Inverter Size Calculator

Inverter Size (W) = (Total Wattage × Safety Factor) ÷ Inverter Efficiency. This ensures that the inverter can handle both the load and the efficiency losses. Let's walk through a simple ...

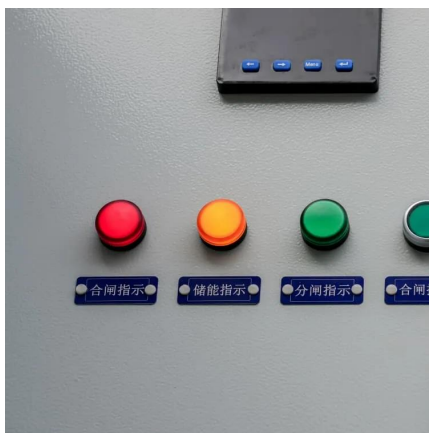
[Request Quote](#)



Can One 12 Volt Battery Run a 1000 Watt Inverter?

Yes, a single 12-volt battery can run a 1000-watt inverter, but the runtime depends on several factors such as the battery's capacity, the inverter's efficiency, and the load ...

[Request Quote](#)



What Inverter Size Do I Need to Run an Air Compressor?

An air compressor is a versatile device that can be used to inflate tires and supply air pressure for various building projects and tools in workshops and garages. Usually they run on electricity or ...

[Request Quote](#)

Can a 12V Inverter Run a TV, Fridge, or Other Household Devices?

But can they handle big appliances? Short Answer: A 12V Inverter can run smaller TVs and some refrigerators if sized correctly. It depends on the inverter's wattage and surge ...

[Request Quote](#)



What Size Inverter Do I Need?

Finding the proper inverter size for your needs is as simple as adding together the necessary wattages of the items that you're looking to power.

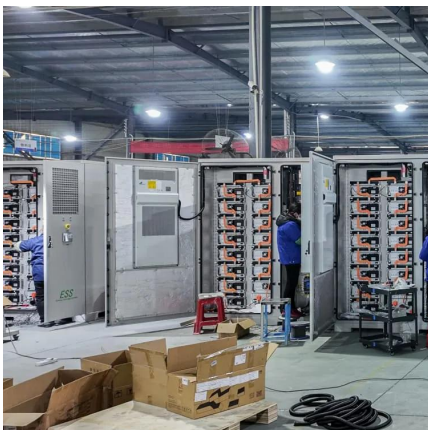
[Request Quote](#)



How to Determine the Right Inverter Size For Your Requirements

How Much Power Is Enough for an Inverter? The right size inverter for your specific application depends on how much wattage your devices require. This information is usually printed ...

[Request Quote](#)



[Find the Right Inverter Size: How Big An Inverter Do ...](#)

Before you buy a power inverter for your car, you need to know what size to purchase. Here's how to estimate your power needs.

[Request Quote](#)

[The Only Inverter Size Chart You'll Ever Need](#)

We have created a comprehensive inverter size chart to help you select the correct inverter to power your appliances.

[Request Quote](#)





[How To Size A Solar Inverter in 3 Easy Steps](#)

Solar inverters come in a range of sizes. What Size Solar Inverter Do I Need? Inverters come in different sizes starting from as little as 125 watts. The typical inverter sizes used for residential ...

[Request Quote](#)

[Can an Inverter Be Too Big for Your Battery System?](#)

How to Calculate the Right Inverter Size for Your Battery Match the inverter's continuous wattage rating to the battery's discharge capacity. For a 12V 200Ah battery (2.4kWh), a 2000W inverter ...

[Request Quote](#)



[What Size Solar Panel Do I Need to Charge a 12v ...](#)

This setup ensures the battery is charged safely and efficiently. Can a 30-Watt Solar Panel Charge a 12-Volt Battery? A 30-watt solar panel can charge a 12 ...

[Request Quote](#)



What Size Inverter To Charge E-Bike Battery? [With Size Chart]

What Size Inverter To Charge E-Bike Battery? Larger battery needs a larger inverter. For a 36V 14A Battery you would need a maximum of 500W inverter. If your battery is 52V 19.2A then ...

[Request Quote](#)



Find the Right Inverter Size: How Big An Inverter Do You need?

Before you buy a power inverter for your car, you need to know what size to purchase. Here's how to estimate your power needs.

[Request Quote](#)



[What Size Inverter do I Need? \[with Examples\]](#)

This industrial-size inverter can power up practically any household appliance as long as you don't go over 5000-watts (minus 20%, to be on the safe side). If ...

[Request Quote](#)



[What size fuse between battery and inverter?](#)

Do I need a fuse between battery and inverter? The short answer is yes, you do need a fuse (or a circuit breaker) between your battery bank ...

[Request Quote](#)





[Understanding Battery Capacity and Inverter Compatibility](#)

How Long Can a 100 Ah Battery Run a 1000W Inverter? To estimate how long a battery can run an inverter, we need to consider the power draw and the battery's capacity. ...

[Request Quote](#)



[How To Size A Solar Inverter in 3 Easy Steps](#)

Solar inverters come in a range of sizes. What Size Solar Inverter Do I Need? Inverters come in different sizes starting from as little as 125 watts. The typical ...

[Request Quote](#)

Inverter for furnace blower

Gas and Oil Home Heating Furnaces - Inverter for furnace blower - Wondering if this can be done. I have a 2000 watt, (12 volt battery is the source) inverter. I want to know if I ...

[Request Quote](#)



[What Size Inverter Do I Need for My Power Needs](#)

To use a power inverter, it needs to be connected to a 12 Volt battery, preferably a deep-cycle battery. In instances where more power is needed, multiple batteries can be wired ...

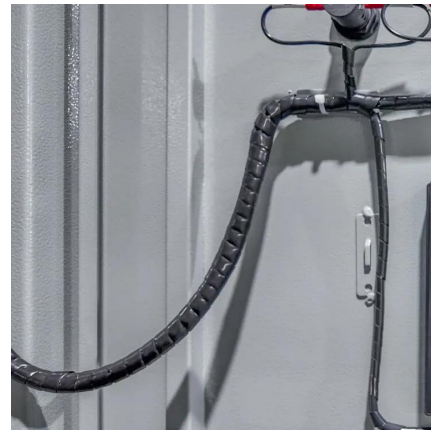
[Request Quote](#)



[What size inverter do you need for a 100ah battery?](#)

What size inverter for a 100Ah battery? For appliances that use a relatively low amount of power, such as laptops, lights, TVs, and small fridges, ...

[Request Quote](#)



Contact Us

For catalog requests, pricing, or partnerships, please visit:
<https://www.espaciovet.es>