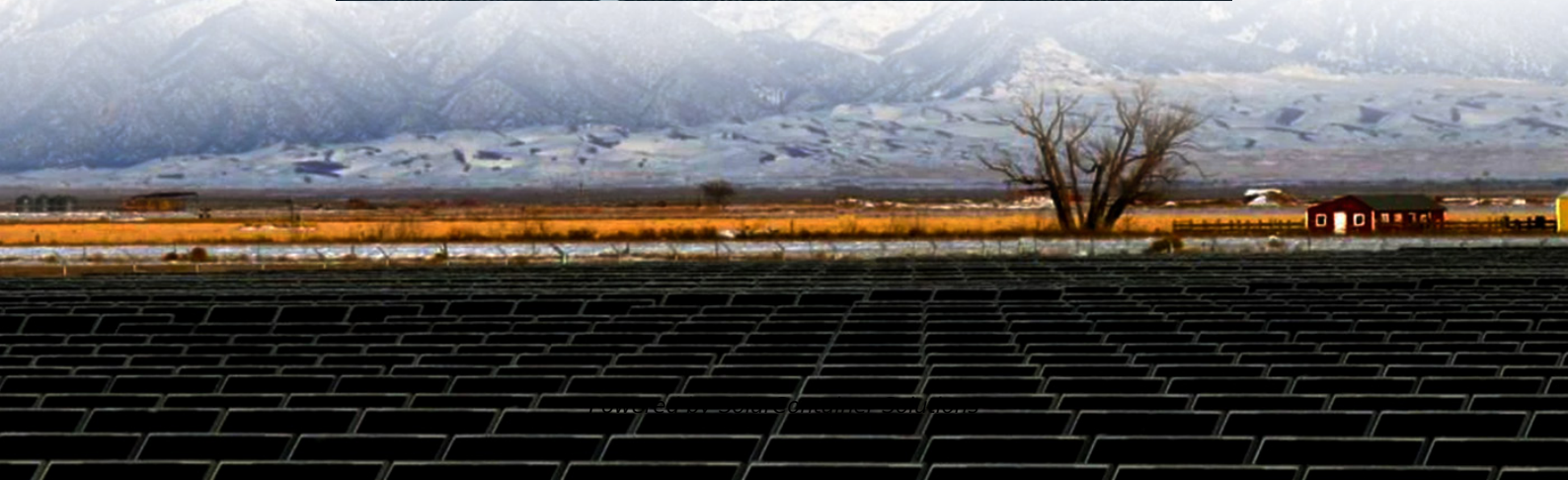
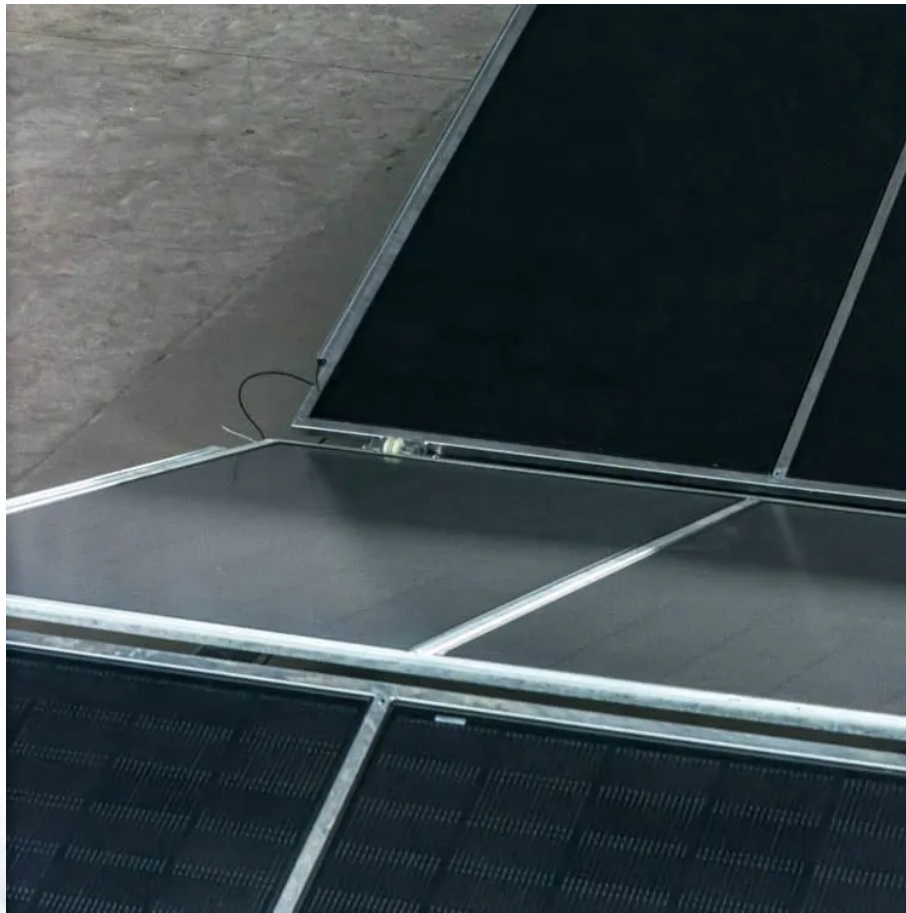


How big of an inverter can a 48v 28 6ah lithium battery be connected to





Overview

Note! The battery size will be based on running your inverter at its full capacity
Assumptions 1. Modified sine wave inverter efficiency: 85% 2. Pure sine wave inverter efficiency: 90% 3. Lithium Battery: 100.

How many batteries can a 36V inverter charge?

If there are three 12V 200ah batteries, the battery voltage is 36V ($12V \times 3 = 36$). An inverter with a 36V can recharge these batteries. The maximum capacity is 600ah ($200 \times 3 = 600$). Battery Parallel Connection. If the battery bank is connected in parallel, the battery bank capacity increases but the battery voltage is the same as each cell.

What is the recommended battery size for an inverter?

Interpreting Results: Once you input the required data, the calculator will generate the recommended battery size in ampere-hours (Ah). For instance, if your power consumption is 500 watts, the usage time is 4 hours, and the inverter efficiency is 90%, the calculator might suggest a battery size of approximately 222 Ah.

What is the calculate battery size for inverter calculator?

The Calculate Battery Size for Inverter Calculator helps you determine the optimal battery capacity needed to support your inverter system. By inputting critical parameters such as power consumption, inverter efficiency, and desired usage time, this calculator provides a precise battery size recommendation tailored to your specific needs.

How many batteries can a solar inverter charge?

This applies to all types of solar inverters regardless of size. The number of batteries you can connect to an inverter cannot be more than 12 times the inverter charging current. A 20A charger can handle 240ah battery maximum. The formula is $A \times 12 = \text{battery capacity (ah)}$. If it is a 40A charger the limit is 480ah.

What voltage should a 12V inverter run on?



The input voltage of the inverter should match the battery voltage. (For example 12v battery for 12v inverter, 24v battery for 24v inverter and 48v battery for 48v inverter Summary What Will An Inverter Run & For How Long?

.

What size inverter for a 200Ah battery?

To determine the appropriate inverter size for a 200Ah battery, consider the following: A 500VA inverter would be suitable, offering a balance between performance and battery life. For extended run times, consider larger inverters or additional batteries to meet higher power demands.



How big of an inverter can a 48v 28 6ah lithium battery be connecte



[Lithium Batteries: What Size Inverter Can I Use?](#)

Bottom line, if you want to run large inverter loads above 1000w on a lithium battery, make sure you choose a lithium battery that is designed for larger ...

[Request Quote](#)

[Calculate Battery Size for Inverter Calculator](#)

Estimate the battery capacity required for your inverter based on power load, runtime, and efficiency. Using the Calculate Battery Size for Inverter Calculator can ...

[Request Quote](#)



[48V lithium batteries: What You Should Know About Them?](#)

The 48v lithium battery is composed of 16 3.2V cells and uses lithium iron phosphate as the positive electrode material. It is composed of multiple lithium-ion cells, ...

[Request Quote](#)



[Lithium Batteries: What Size Inverter Can I Use?](#)

Bottom line, if you want to run large inverter loads above 1000w on a lithium battery, make



sure you choose an lithium battery that is designed for larger inverters or a system that can be ...

[Request Quote](#)



[BigBattery ETHOS , 48V - 5.1kWh , UL1973 , Home ...](#)

The BigBattery ETHOS is a modular 48V lithium battery system built to deliver reliable, long-lasting energy storage at the lowest cost-per-kWh for UL ...

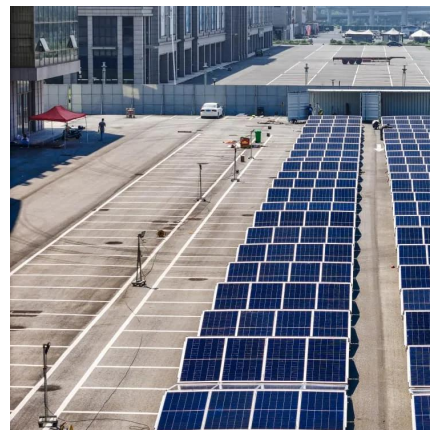
[Request Quote](#)



[How to Calculate Battery Size for Inverters of Any Size](#)

We're here to let you know that learning how to calculate battery size for an inverter is simple. Learn how many batteries for a 3000-watt inverter or a 1kVA inverter and more, right here at ...

[Request Quote](#)



12 Volt Battery Run Time Calculator

Do you have a 12v device you need to power but don't know what 12-volt battery you need? For those running a continuous 12-volt load, an adequately sized deep-cycle ...

[Request Quote](#)



48V or 51V battery

Prebuilt Battery Packs still require either a Solar Charge Controller, Inverter/Charger and solar panels of course. Many Inverter/Chargers may also ...

[Request Quote](#)



How Do You Calculate the Appropriate Inverter Size for a 48V ...

To calculate the appropriate inverter size for a 48V battery system, you need to determine the total wattage of the devices you plan to power. The formula is: Inverter Size ...

[Request Quote](#)

Battery Run Time Calculator

The Battery Run Time Calculator is designed to help users estimate how long a battery will power a device based on its capacity, voltage, and the ...

[Request Quote](#)



How Do You Calculate the Appropriate Inverter Size for a 48V Battery

To calculate the appropriate inverter size for a 48V battery system, you need to determine the total wattage of the devices you plan to power. The formula is: Inverter Size ...

[Request Quote](#)



How Many Batteries can Be Connected To An Inverter?

The number of batteries you can connect to an inverter cannot be more than 12 times the inverter charging current. A 20A charger can handle 240ah battery maximum.

[Request Quote](#)



How to Calculate Battery Size for Inverters of Any Size

Learn how to calculate how much battery power you need to get your inverter up and running with The Inverter Store's handy how-to guide. It works for any size.

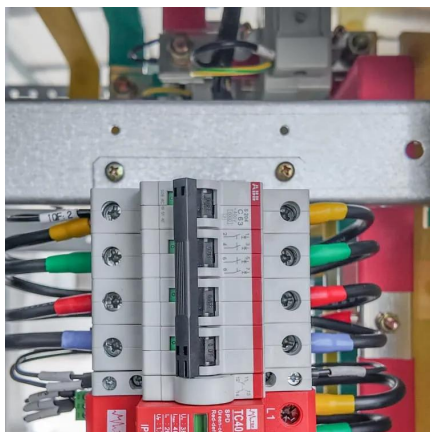
[Request Quote](#)

How Do You Choose the Right Inverter Size for Your Specific ...

Matching the inverter size to a 200Ah lithium battery is crucial for optimal performance and efficiency. An appropriately sized inverter ensures that it can handle the ...

[Request Quote](#)





[What Size Lithium Battery Is Needed for a 2000W Inverter](#)

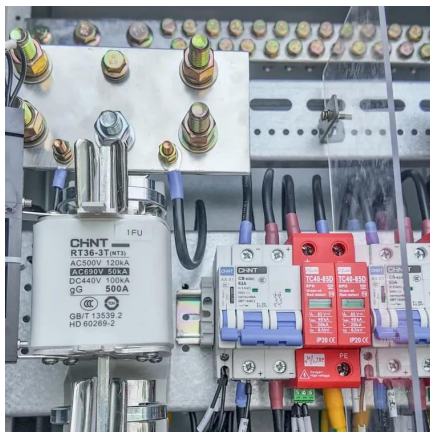
Most 2000W inverters support 12V/24V/48V, but mismatched voltage triggers errors or shutdowns. Always match battery bank voltage to inverter input specifications.

[Request Quote](#)

[The Only Inverter Size Chart You'll Ever Need](#)

We have created a comprehensive inverter size chart to help you select the correct inverter to power your appliances.

[Request Quote](#)



[What Size Inverter for 100Ah Battery? - MWXNE POWER](#)

Ideal Inverter Size for a 100Ah Battery General Rule: Recommended inverter size = Battery voltage × max safe current draw For a 12V 100Ah battery, assume a max safe draw ...

[Request Quote](#)

ECO-WORTHY 51.2V 100Ah 5.12KWh LiFePO4 3U Size V3 Lithium Battery

eco-worthy-us via eBay has ECO-WORTHY 51.2V 100Ah 5.12KWh LiFePO4 3U Size V3 Server Rack Lithium Battery on sale for \$974.99 - 20% with coupon code ...

[Request Quote](#)



Calculate Battery Size For Any Size Inverter (Using Our Calculator)

To recharge your battery from time to time you would need the right size solar panel to do the job! Read the below article to find out the suitable solar panel size for your battery bank

[Request Quote](#)



[Inverter Battery Size Calculator , Enviraj](#)

Calculate the ideal battery size for your inverter system. Input load, backup time, voltage, and battery type to find the required capacity.

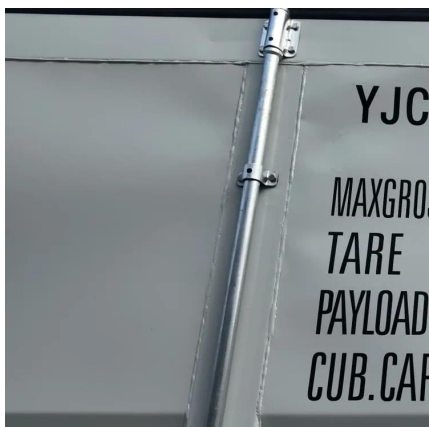
[Request Quote](#)



Connection Diagram of a Hybrid Inverter with Solar Panels, ...

It shows solar panels connected to a battery and a hybrid solar inverter, which then powers common household appliances. The system also appears to have a connection to the ...

[Request Quote](#)

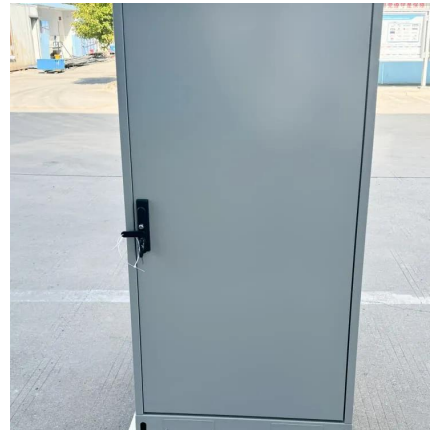




[Can an Inverter Be Too Big for Your Battery System?](#)

A 30% buffer between inverter demand and battery output is ideal. Lithium batteries forgive minor mismatches, but lead-acid systems require strict adherence to C-rates."

[Request Quote](#)



[Understanding Battery Capacity and Inverter Compatibility](#)

In this guide, we will delve into the practical aspects of converting amp-hours to watt-hours, calculating battery run times, and determining the right inverter size, among other ...

[Request Quote](#)

[Choosing the Best Inverter Size for a 200Ah Lithium Battery](#)

48V 200Ah lithium battery: Up to 8,000W inverter Choosing a pure sine wave inverter and installing with proper wiring, breakers, and ventilation will ensure optimal ...

[Request Quote](#)



[What Size Inverter Can I Run Off a 100Ah Lithium Battery?](#)

When using a 100Ah lithium battery, the size of the inverter you can run typically depends on the battery's capacity and the power requirements of your devices. Generally, you ...

[Request Quote](#)



Contact Us

For catalog requests, pricing, or partnerships, please visit:
<https://www.espaciovet.es>