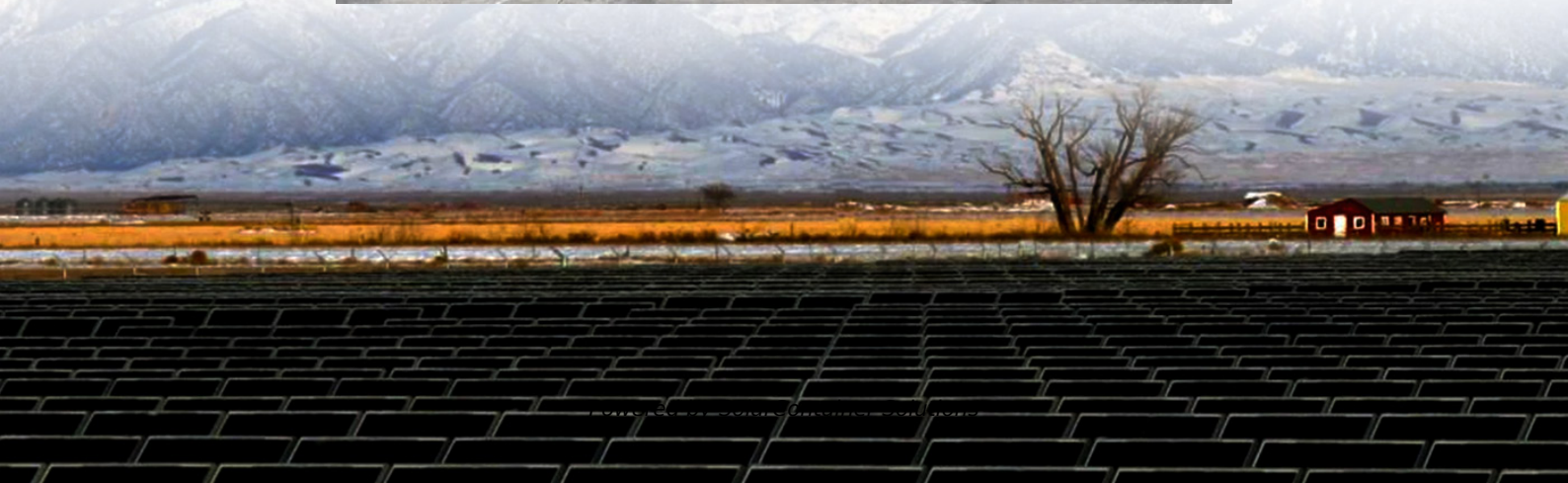


# **How far away should photovoltaic panels be from the roof**





## Overview

---

Solar panels should be mounted at a height of 3.75" to 5.25" from the roof's surface to ensure optimal performance. This measurement takes into account the seam of the SSMR, typically 1.5" to 3" in height, the mounting hardware, adding approximately  $\frac{3}{4}$ " and the module frame, contributing another 1.5". How far should solar panels be from a roof?

It is usually recommended to maintain at least a 3-meter distance to avoid potential shading issues and neighborhood disputes. Height Restrictions: In some cases, solar panels installed on rooftops must not exceed 30 centimeters above the roof height.

How to determine the distance between photovoltaic panels?

Knowing the minimum angle of incidence of sunlight during the year, it is possible to determine the distance between successive rows of photovoltaic panels. 25 ° was taken as the value of the inclination of the supporting structure and the panel itself. Recommended values are in the range of 25 – 40 °. The height of the selected panel is 165 cm.

Should solar panels be installed away from the roof edge?

Installing away from the roof edge reduces wind loading on the panels and makes them less likely to be damaged or even torn off in a storm. I looked at five different manufacturers of solar roof mounting systems and was able to find Australian installation guidelines for four of them.

How far away should solar panels be installed?

This law mandates that solar panels must be installed at least two meters away from property boundaries. Additionally, local regulations may vary by region or province, so it is essential to check local laws before installation.

Are solar panels allowed on a roof?

Depending on the roof mounting system used to attach the panels, there may



be 'exclusion zones' where no solar panels are allowed. These zones exist because winds are strongest around the edges of roofs. Installing away from the roof edge reduces wind loading on the panels and makes them less likely to be damaged or even torn off in a storm.

How many solar panels can be installed on a roof?

Assuming each solar panel measures 5 x 3 feet, the available roof space is 14 feet wide x 38 feet long, and two rows can be installed. This assumes that the modules are installed in portrait style and at the same angle as the roof. At 3.5 feet wide, 10 panels can be installed.



## How far away should photovoltaic panels be from the roof

---



### [What is the Best Direction for Solar Panels to Face](#)

The direction of the solar panel is more important than the angle. The solar panel's angle is rarely a limiting factor, and most roof tilts work fine. The wrong angle in a correct solar orientation ...

[Request Quote](#)

### [How close to the edge of your roof can your solar ...](#)

Even when manufacturer guidelines don't require it, installers still need to leave enough space at the bottom edge of a roof so water flowing ...

[Request Quote](#)



### [How close to a roof edge can panel corners/bottom be?](#)

The picture shows the roof in question on the right and omits the top (sixth) panel. The top panel and the middle row's two panels will be slightly further away from the hip. Rain ...

[Request Quote](#)



### [PV on a flat roof, how far from the edge?](#)

I'm trying to get a new PV system installed, on a flat roof. I'm about to apply for planning permission, but can't find any solid info online ...





[Request Quote](#)



### [How close can solar panels be to edge of roof?](#)

It is important to check with local authorities before installing solar panels to ensure compliance with all regulations. In general, solar panels should be placed as far away from the ...

[Request Quote](#)

### [How to calculate the minimum distance between PV panels?](#)

Introduction Why is the Distance Between Solar Panels Important? What Factors Should Be Considered When Installing Solar Panels? How to Calculate the Minimum ...

[Request Quote](#)



### **How close to the edge of your roof can your solar panels go?**

Even when manufacturer guidelines don't require it, installers still need to leave enough space at the bottom edge of a roof so water flowing down solar panels doesn't ...

[Request Quote](#)





### How Far Between Solar Panels Should be Away From?

Solar panels should be mounted at a height of 3.75' to 5.25' from the roof's surface to ensure optimal performance. This measurement takes into account ...

[Request Quote](#)



### **Rules for Rooftop Solar**

At least two 36-in. or wider paths must be provided on separate roof planes from the lowest roof edge to the ridge. At least one of the paths must be accessible ...

[Request Quote](#)

### How High Off The Roof Should Solar Panels Be Mounted?

Solar panels should be mounted at a height of 3.75' to 5.25' from the roof's surface to ensure optimal performance. This measurement takes into account the seam of the SSMR, typically ...

[Request Quote](#)



### How Close Can Solar Panels Be To Edge Of Roof?

So, there you have it! The answer to the question "how close can solar panels be to edge of roof?" is that in most cases, they must be set back a minimum of 18 inches from the ...

[Request Quote](#)



## How Far Should Solar Panels Be? 5 Efficiency Secrets

Discover how far solar panels should be for max efficiency! Learn 5 secrets on voltage drop, roof spacing, and optimization tips. Read now!

[Request Quote](#)



## How Far Can Solar Panels Be From The House?

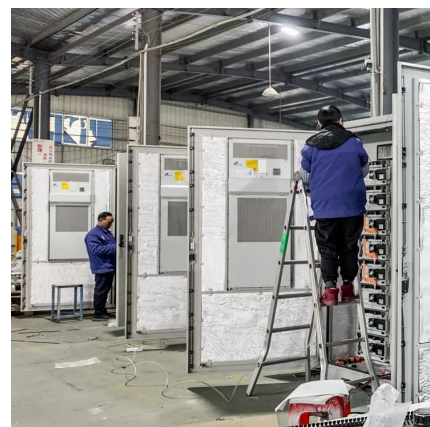
Roof-Mounted Solar Panels: In the case of roof-mounted solar panels, it's often recommended to place them as close to the house as possible while ensuring they receive ...

[Request Quote](#)

## **How much gap really needed between solar pv and edges of roof?**

On any 'normal' roof, you wouldn't need that margin as you can probably access the ridge tiles from the side away from panels.

[Request Quote](#)





### [How Far Between Solar Panels Should be Away From?](#)

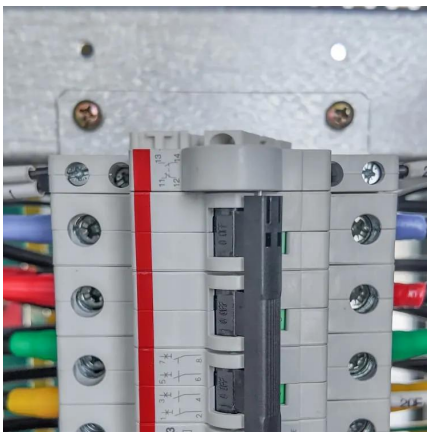
There should be 12 to 16 inches of space between the solar panel track between the first support and the end of the track. Too much space between the rails and the panels ...

[Request Quote](#)

### [How to Calculate the Minimum Distance Between PV Panels?](#)

Understand the importance of minimum installation distance for solar panels, calculation methods, and relevant regulations to ensure efficient operation and compliance of solar energy systems.

[Request Quote](#)



### [The best distance between solar panels and house](#)

The distance of a solar energy system from the house can vary depending on various factors. In general, solar panels should be installed as ...

[Request Quote](#)

## **Shade Calculator**

Knowing the minimum angle of incidence of sunlight during the year, it is possible to determine the distance between successive rows of photovoltaic panels. ...

[Request Quote](#)





### [How Close Can Solar Panels Be To The Edge Of The ...](#)

This will be a different viewpoint than most, but the best location will be to install solar panel tiles and forgo panels on a residential roof. The ...

[Request Quote](#)



### [Can I place my Solar Panels about 1/4 mile from my house?](#)

Should my batteries be closer to solar array or the house. If helpful, there's power at the street, it's about 1/4 mile to field where we're thinking of solar panels and then another 1/4 mile to home. ...

[Request Quote](#)



### **How to Calculate Solar Panel Row Spacing for Maximum Efficiency**

Calculate accurate solar panel row spacing with our easy-to-use tool. Avoid shading and optimize performance. Input tilt, azimuth, and panel dimensions. Try now!

[Request Quote](#)





## How Far Should Photovoltaic Panels Be Installed to Avoid Harm?

The 3-Foot Rule: Myth or Must? While fire codes often cite 3 feet (0.9m) as the minimum safe distance for solar panels from roof edges, the reality's more nuanced. Consider these factors:

[Request Quote](#)



## [The shape of shade: Understanding the relationship ...](#)

Ultimately, the main takeaway here is that our intuition is often wrong with respect to how much shade we should expect from an obstruction. ...

[Request Quote](#)

## Shade Calculator

Knowing the minimum angle of incidence of sunlight during the year, it is possible to determine the distance between successive rows of photovoltaic panels. The figure below shows the ...

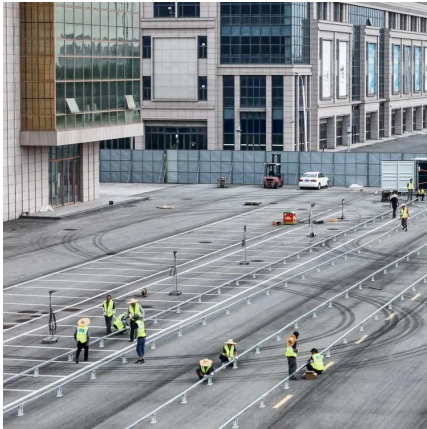
[Request Quote](#)



## [How Far the Solar Panels Can be From the House?](#)

ATO provides high quality solar panels for you, such as 60W, 80W, 120W portable solar panel. How Far Can Solar Energy Transmit? In ...

[Request Quote](#)



## How Far Can Solar Panels Be From Inverter

How Far Can Solar Panels Be From Inverter? Ideally, solar panels should be as close to the inverter and charge controller as possible. In situations where the panels are roof ...

[Request Quote](#)



## **Rules for Rooftop Solar**

At least two 36-in. or wider paths must be provided on separate roof planes from the lowest roof edge to the ridge. At least one of the paths must be accessible from a public way or driveway.

[Request Quote](#)

## Violating Solar Panel Exclusion Zones: The ...

Conservative solar installers say no part of any solar panel shall ever encroach on a roof's exclusion zone. Pragmatic installers may differ.

[Request Quote](#)





## Contact Us

---

For catalog requests, pricing, or partnerships, please visit:  
<https://www.espaciovet.es>