

How long does it take for the new energy battery cabinet base station to charge





Overview

What are battery storage power stations?

Battery storage power stations are usually composed of batteries, power conversion systems (inverters), control systems and monitoring equipment. There are a variety of battery types used, including lithium-ion, lead-acid, flow cell batteries, and others, depending on factors such as energy density, cycle life, and cost.

What is a battery energy storage system?

A battery energy storage system (BESS) is an electrochemical device that charges (or collects energy) from the grid or a power plant and then discharges that energy at a later time to provide electricity or other grid services when needed.

How long does a battery storage system last?

For example, a battery with 1 MW of power capacity and 4 MWh of usable energy capacity will have a storage duration of four hours. Cycle life/lifetime is the amount of time or cycles a battery storage system can provide regular charging and discharging before failure or significant degradation.

What is the construction process of energy storage power stations?

The construction process of energy storage power stations involves multiple key stages, each of which requires careful planning and execution to ensure smooth implementation.

How long does it take to charge a portable battery?

The amount of time will depend on the model and battery capacity of the rechargeable portable outlet, as well as the charge way you are using. Generally, charging with an AC wall outlet is the fastest way to go. For most models, this can take anywhere from 2-5 hours.



Why do battery storage power stations need a data collection system?

Battery storage power stations require complete functions to ensure efficient operation and management. First, they need strong data collection capabilities to collect important information such as voltage, current, temperature, SOC, etc.



How long does it take for the new energy battery cabinet base stati



Eaton s lithium-ion UPS battery Q&A

a. No. Eaton has limited the charge current per cabinet to a level that will not add internal heating to the battery, thus Eaton can begin recharging immediately upon return of input power.

[Request Quote](#)

[How Does a Battery Energy Storage System \(BESS\) Work?](#)

3 days ago· Here's the basic loop: you charge the system when energy is cheap or overproduced (like noon on a sunny Sunday in California), and discharge it when it's most valuable (like 6:00 ...

[Request Quote](#)



[4 Best Ways on How to Charge/Recharge a Portable ...](#)

The generally range anywhere from 6-24 hours, depending largely on the type/size/capacity battery installed in the power station - larger capacity ...

[Request Quote](#)



[Understanding how Base charges and discharges its batteries](#)

When there's plenty of energy to support the grid, the batteries recharge. Our batteries are



engineered for rapid charge and discharge. This design enables them to respond instantly to ...

[Request Quote](#)



4 Best Ways on How to Charge/Recharge a Portable Power Station

The generally range anywhere from 6-24 hours, depending largely on the type/size/capacity battery installed in the power station - larger capacity batteries tend to hold ...

[Request Quote](#)

[How the Base battery works: A complete guide to grid ...](#)

Learn how Base's home battery system works, from grid connectivity to outage protection. Discover how our intelligent software optimizes your home's ...

[Request Quote](#)



[Car Battery Charge Times with ANY Amp Charger](#)

How Long Does it Take to Charge a Car Battery with a Trickle Charger? A 1.5 amp trickle charger can charge a 50% discharged small car battery (200-315 ...

[Request Quote](#)



[Top Echo Dot Battery Base Options for Every Generation](#)

Here are the top two battery base options to make this little device even more versatile.
Blanou Echo Dot 3 Battery Base Features: Sleek design, easy to ...

[Request Quote](#)



[How Does a Battery Energy Storage System \(BESS\) ...](#)

3 days ago· Here's the basic loop: you charge the system when energy is cheap or overproduced (like noon on a sunny Sunday in California), and discharge it ...

[Request Quote](#)

[How does the energy storage cabinet charge? , NenPower](#)

The charging duration for an energy storage cabinet can vary widely based on several factors, including the battery's capacity, the power output from its energy sources, and ...

[Request Quote](#)



[How much does a small battery energy storage cabinet cost?](#)

1. Understanding the Cost of a Small Battery Energy Storage Cabinet 1.1. The cost of a small battery energy storage cabinet typically ranges from \$5,000 to \$15,000, depending ...

[Request Quote](#)



[How Long Does a Portable Power Station Take to Charge](#)

Its modular design allows expansion, and it charges fully in 4.5-5 hours via AC, making it a reliable pick for prolonged outdoor use or power outages. Understanding how long ...

[Request Quote](#)



[How long does it take to charge? : r/electricvehicles](#)

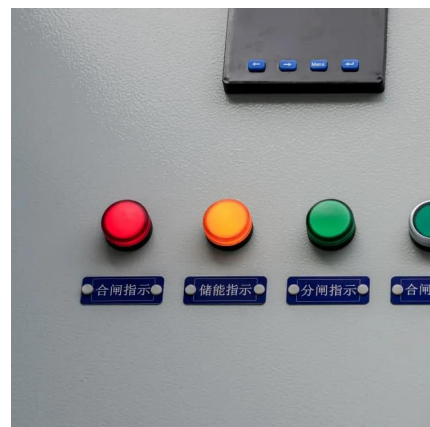
There is no one answer, it depends in on variables like ambient temperature, the station and its max abilities, the vehicle and its max abilities, battery ...

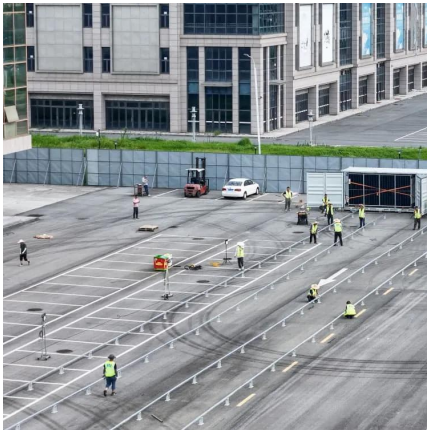
[Request Quote](#)

CloudEnergy 48V 100Ah Lithium Battery Installation Review by ...

Q: How long does it take to charge the CloudEnergy 48V 100Ah lithium battery? A: Typically, it takes about 5-6 hours for a full charge. Q: Can I install the lithium battery myself? A: Yes, with ...

[Request Quote](#)





[What equipment does the base station energy storage ...](#)

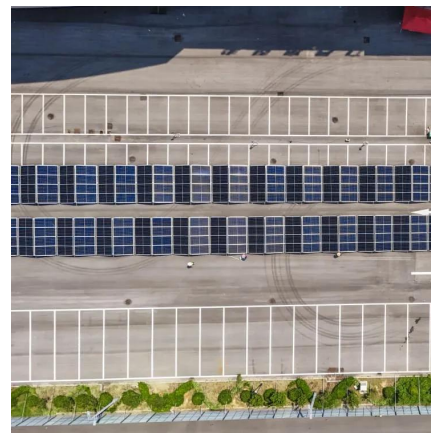
The equipment utilized in the base station energy storage cabinet comprises multiple essential components, which include: batteries, inverters, ...

[Request Quote](#)

[How long does it really take to fully charge your phone?](#)

Smartphones can take many more minutes to fully charge than they claim. So, how long does it really take for a phone to charge to 100%?

[Request Quote](#)



[How Long Does It Take to Charge an Electric Wheelchair?](#)

Just how long does it take to charge an electric wheelchair? Read more about how to practice good battery charging habits here.

[Request Quote](#)



[23 Ring Base Station Common Questions \(Solved\)](#)

Follow the in-app instructions and prompts to complete the setup How Long Does It Take for Ring Base Station to Update? How long it takes your Ring base station to update ...

[Request Quote](#)



[How long does it take to charge? : r/electricvehicles](#)

I'm asking because it takes me like 5 minutes to put gas in my tank. If you're talking about day to day charging, it takes me about two seconds to charge. I run all my errands for ...

[Request Quote](#)



[How much does Base cost? How much do I pay for energy?](#)

To get started with Base, you pay a \$50 refundable deposit upfront. This deposit applies toward your one-time installation cost once your battery is installed, and is refundable until your home ...

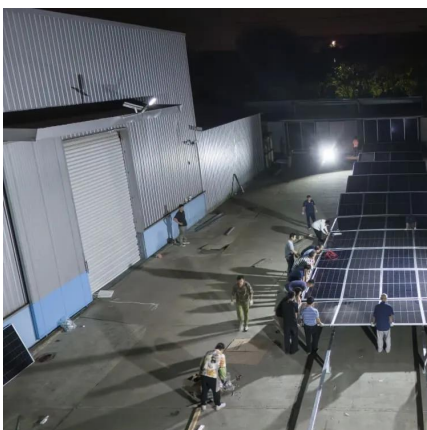
[Request Quote](#)



[Grid-Scale Battery Storage: Frequently Asked Questions](#)

Storage duration is the amount of time storage can discharge at its power capacity before depleting its energy capacity. For example, a battery with 1 MW of power capacity and 4 MWh ...

[Request Quote](#)





[Battery storage power station - a comprehensive guide](#)

This article provides a comprehensive guide on battery storage power station (also known as energy storage power stations). These facilities play a crucial role in modern power grids by ...

[Request Quote](#)



[How to Charge Your iRobot Roomba: Easy Tips and ...](#)

Solution: Try cleaning the charging contacts or replacing them if necessary. Dead battery cells: If one or more of your Roomba's battery cells are dead, it won't ...

[Request Quote](#)

[Battery storage power station - a comprehensive guide](#)

This article provides a comprehensive guide on battery storage power station (also known as energy storage power stations). These facilities play a crucial ...

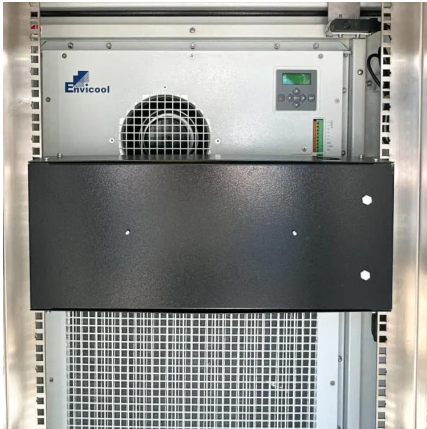
[Request Quote](#)



[How Long It Takes To Charge An Electric Car at a ...](#)

The Nissan Leaf with a 60 kWh battery will charge faster than a Kia EV6 with a 77.4 kWh battery unless the battery in the Leaf has a slow ...

[Request Quote](#)



How does the energy storage cabinet store electricity?

1. Energy storage cabinets function by utilizing advanced battery technology to store electrical energy for later use, 2. They integrate various ...

[Request Quote](#)



How Long Does It Take to Charge an Electric Car?

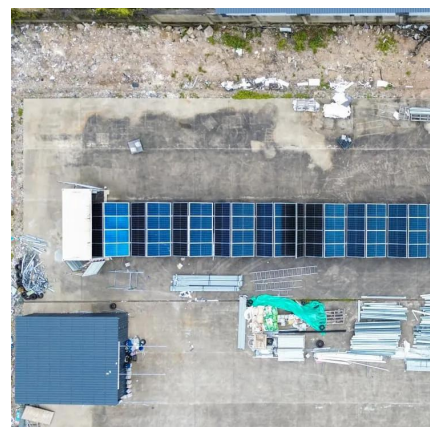
The battery size affects how much power it can hold, which determines the car's range. A car with a nearly depleted 100kWh battery pack, for example, would ...

[Request Quote](#)

How long does it take to charge? : r/electricvehicles

I'm asking because it takes me like 5 minutes to put gas in my tank. If you're talking about day to day charging, it takes me about two seconds to charge. I ...

[Request Quote](#)





Contact Us

For catalog requests, pricing, or partnerships, please visit:
<https://www.espaciovet.es>