

How long does it usually take for an outdoor power supply to discharge





Overview

Modern PSUs are usually discharged in about 20 minutes completely. Therefore, if you aren't doing anything, you can wait for 20 minutes for the residual charges to drain. But it is always safe to unplug all the cables and let them drain for about 20 minutes. Do you touch a high voltage power supply?

AN-05 : "No, you touch it". HV power supply output fall and discharge times explained. "No, you touch it". HVPS output fall and discharge times explained. When working with high voltage power supplies knowing about output fall and discharge times can be helpful.

Do you touch a HV power supply?

HV power supply output fall and discharge times explained. "No, you touch it". HVPS output fall and discharge times explained. When working with high voltage power supplies knowing about output fall and discharge times can be helpful. Consider this information as only providing additional details on power supply functionality.

How to calculate battery charging time based on depth of discharge (DOD)?

To calculate the battery charging time based on Depth of Discharge (DoD), you need to multiply the battery capacity by the DoD and the charge current by the charge efficiency. Divide both the answers to get the battery charging time. Formula: $\text{Charge Time} = (\text{Battery Capacity} \times \text{Depth of Discharge}) \div (\text{Charge Current} \times \text{Charge Efficiency})$.

How do I know if a high voltage power supply is safe?

When working with high voltage power supplies knowing about output fall and discharge times can be helpful. Consider this information as only providing additional details on power supply functionality. This application note by itself is not adequate "safety training" for the proper setup and use of a HVPS.

How do you calculate the charge time of a Jackery portable power station?



Formula: Charge Time = (Battery Capacity × Depth of Discharge) ÷ (Charge Current × Charge Efficiency). Jackery Portable Power Stations are portable battery backups that can be carried anywhere to power indoor or outdoor appliances. These can be recharged in just a few hours using solar panels, car chargers, and wall outlets.

What is the difference between depth of discharge and battery discharge?

The battery's depth of discharge and battery discharge are the two terms you'll need to consider while calculating the charging time with the AGM battery charge time calculator. Depth of discharge is generally defined as the capacity discharged from a fully charged battery, divided by nominal battery capacity.



How long does it usually take for an outdoor power supply to discharge



Outdoor power supply FAQ: How to discharge the outdoor power supply

2. Use the self-discharge function of the outdoor power supply to let the battery discharge naturally. This is a milder and safer method, but it also has some limitations. First, ...

[Request Quote](#)

[The proper way to discharge electricity from a flat ...](#)

Hi guys, I've fixed a few TVs already with the power supply problem by taking the DM board out and replacing the capacitors. However, ...

[Request Quote](#)



DJI Power Series FAQ

DJI Power 500 can maintain maximum output power of 1000 W as long as its battery level is above 20%. What considerations should be taken when using the power station in low ...

[Request Quote](#)

How long does it usually take for an outdoor power supply to discharge

Outdoor power supply Q& A: Will the outdoor power supply Therefore, it is recommended to



charge and discharge the outdoor power supply regularly for about 3 months to keep the ...

[Request Quote](#)



[How do I safely discharge these :
r/AskElectronics](#)

Took me longer to type this edit than it did to calculate how long that might take to fully discharge. I am pretty sure there are better things I can do for 15 minutes ...

[Request Quote](#)

How long to discharge a PSU

If a component has no power source to gain from for about 10 minutes it will be drained of power. Depending on the capacity this varies, but I'm sure you will be fine.

[Request Quote](#)



How long after shutting down a power supply is it safe to open

As a rule of thumb, wait at least 20 minutes for modern AT-ATX PSU to discharge. But the A2000 PSU is a different beast, of course. Wait 30 minutes with the power cord ...

[Request Quote](#)



How long does it take for a PSU to fully discharge?

Unplug it from the wall, then press and hold the power button while the PSU is still connected internally, that should discharge its capacitors. To make sure, use a voltage meter ...

[Request Quote](#)



What is the easiest and safest way to discharge a computer power supply

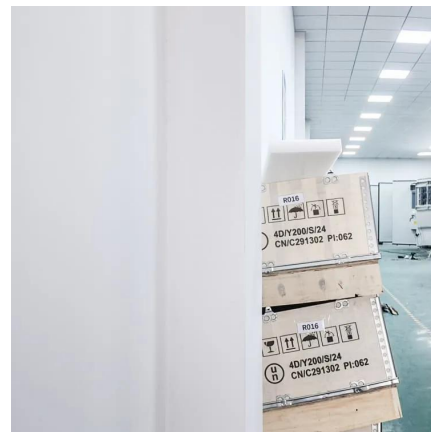
The standard practice is to take a screwdriver and short out the terminals to ground with the unit unplugged. However after about 30 seconds this is unnecessary because ...

[Request Quote](#)

How to Calculate Battery Charging Time

The battery charging time means the time taken to fully charge the battery of a portable power station or solar generator. It is crucial to understand how long the battery can ...

[Request Quote](#)



How to discharge a PSU completely before changing the fan?

Leave the PSU disconnected from the main. Wait 10 minutes, then carefully measure the voltage across the input electrolytic capacitors (the ones rated at 400v) to verify ...

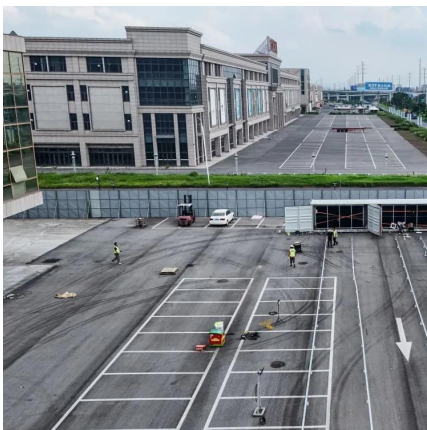
[Request Quote](#)



[What is the Discharge Power of a Battery? \(Discharge Rate\)](#)

The discharge power of a battery is a measure of how much electrical energy it can provide at a given time. The higher the discharge power, the more energy your device will be ...

[Request Quote](#)



[Discharging an AT power supply for maintenance](#)

The power supply for one of my computers needs a new fan. How do I discharge the power-supply capacitors to make it safe to open up? With an ATX power supply, it's just a ...

[Request Quote](#)

[How to discharge a computer power supply? \(3 Best Methods\)](#)

There are three methods to safely discharge the capacitors of the PSU. Turn off all the power supply to the PC from the mains. Unplug all the cables and wires attached to the PC. Then ...

[Request Quote](#)





[Understanding Microwave Capacitor Discharge: A ...](#)

A higher leakage current will result in a faster discharge time. Ambient temperature: The ambient temperature can also impact the discharge time. A higher ...

[Request Quote](#)

[How long are capacitors in a power supply dangerous?](#)

The input caps in a power supply have a 180 to 360 volt charge on them. How long they hold this charge depends on the circuit.

[Request Quote](#)



[Capacitor Discharge Time Calculator \(with Examples\)](#)

This discharge process is important in various electronic circuits, including timing circuits, filters, and power supply systems. The discharge time of a capacitor is ...

[Request Quote](#)

[Safest fastest way to discharge a capacitor in circuit?](#)

To discharge a capacitor safely, make the discharge resistance high enough that the RC time-constant is equal to about one second. Example: A 500uF capacitor charged to 500V contains ...

[Request Quote](#)



What is the easiest and safest way to discharge a computer ...

The standard practice is to take a screwdriver and short out the terminals to ground with the unit unplugged. However after about 30 seconds this is unnecessary because ...

[Request Quote](#)



[How do I find out how long a capacitor takes to ...](#)

I know that in an RC circuit the time constant is roughly 1/5th the time it takes to charge the capacitor. And I know that the equation is $T=RC$, My question is; in ...

[Request Quote](#)



[Battery Runtime Calculator: How Long Does Battery ...](#)

How long will your battery last? find out with our easy-to-use battery runtime calculator.. (12v, 24v, 50ah, 150ah, 100ah, 200ah, 50ah)

[Request Quote](#)





Outdoor power supply FAQ: How to discharge the outdoor power ...

First, this method requires the outdoor power supply to have a self-discharge function, otherwise it cannot be achieved. Secondly, this method takes a long time, and it may ...

[Request Quote](#)



[High Voltage Power Supply Output Fall & Discharge Times](#)

When working with high voltage power supplies knowing about output fall and discharge times can be helpful. Consider this information as only providing additional details on power supply ...

[Request Quote](#)

[How to Safely Discharge an AC Capacitor](#)

How long does it take for a capacitor to discharge? Under normal circumstances, the discharge time of a capacitor is 3 minutes. That is to say, ...

[Request Quote](#)



[How to Calculate Battery Charging Time](#)

The battery charging time means the time taken to fully charge the battery of a portable power station or solar generator. It is crucial to ...

[Request Quote](#)



Outdoor power supply FAQ: How to discharge the outdoor power supply

First, this method requires the outdoor power supply to have a self-discharge function, otherwise it cannot be achieved. Secondly, this method takes a long time, and it may ...

[Request Quote](#)



How long after shutting down a power supply is it safe to open

As per the subject, I have an Amiga 2000 and I want to dust out the power supply. How long after shutting down should I wait before the power supply has lost all charge so I can ...

[Request Quote](#)

How long does it usually take for an outdoor power supply to ...

Outdoor power supply Q& A: Will the outdoor power supply Therefore, it is recommended to charge and discharge the outdoor power supply regularly for about 3 months to keep the ...

[Request Quote](#)





Contact Us

For catalog requests, pricing, or partnerships, please visit:
<https://www.espaciovet.es>