

How long is the time limit for wind power construction of communication base stations





Overview

Can wind energy be used to power mobile phone base stations?

Worldwide thousands of base stations provide relaying mobile phone signals. Every off-grid base station has a diesel generator up to 4 kW to provide electricity for the electronic equipment involved. The presentation will give attention to the requirements on using windenergy as an energy source for powering mobile phone base stations.

Do local ordinances require setbacks for small wind energy systems?

Specifically, local ordinances cannot require setbacks for small wind energy systems that are greater than 150% of the system height. This distance serves as the standard setback in absence of a local ordinance stating otherwise. There are additional restrictions for wind projects in coastal zones. Local N.M. Stat. Ann. §3-21-1; §62-9-3;.

Can I build a wind energy facility without a permit?

State law prohibits the construction or operation of a wind energy facility with a capacity of 1 MW or more without a permit from the Department of Environment and Natural Resources. The department is required to hold a public hearing in each county impacted by a potential project within 75 days of receiving a permit application.

What is a wind farm substation?

A substation (or two) may be part of the scope of work, as well as an operations and maintenance facility. One of the unique features of wind farm construction is the size of a large wind farm.

How many access roads does a wind farm need?

A large wind farm may require building as many as 100 miles of access roads. As the roads are built, crane pads at each wind turbine site are also constructed. These crane pads are built to provide space for the large crane to



install the wind turbine components.

Can local governments regulate small wind energy systems?

Local governments cannot adopt ordinances regulating small wind energy systems that unreasonably limit wind generation development. Specifically, local ordinances cannot require setbacks for small wind energy systems that are greater than 150% of the system height.



How long is the time limit for wind power construction of communication



[China's 5G dominance: 3.19 million base stations ...](#)

Base stations offering high-speed fifth-generation (5G) mobile networks have now exceeded 3.19 million, the Ministry of Industry and ...

[Request Quote](#)

[What is 5G base station architecture?](#)

What are your power requirements? 5G base stations typically need more than twice the amount of power of a 4G base station. In 5G network ...

[Request Quote](#)



Communication base station power station based on wind-solar

A wind-solar hybrid and power station technology, applied in the field of communication, can solve problems such as the difficulty of power supply for communication base stations, and achieve ...

[Request Quote](#)



Energy-efficiency schemes for base stations in 5G heterogeneous

In today's 5G era, the energy efficiency (EE) of cellular base stations is crucial for sustainable



communication. Recognizing this, Mobile Network Operators are actively prioritizing EE for ...

[Request Quote](#)



[State Approaches to Wind Facility Siting](#)

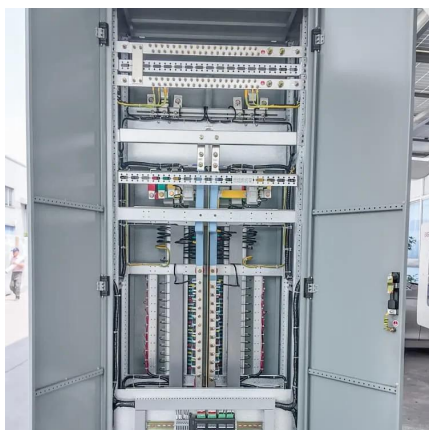
No person may begin construction of a wind energy facility 100 MW or greater without first obtaining a permit from the PUC. The PUC must make a final determination ...

[Request Quote](#)

[The business model of 5G base station energy storage ...](#)

1 Introduction 5G communication base stations have high requirements on the reliability of power supply of the distribution network. During planning and construction, 5G base stations are ...

[Request Quote](#)



Optimization Control Strategy for Base Stations Based on Communication

With the maturity and large-scale deployment of 5G technology, the proportion of energy consumption of base stations in the smart grid is increasing, and there is an urgent need to ...

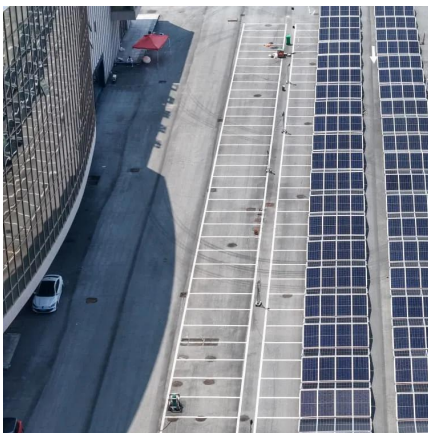
[Request Quote](#)



Wind Energy , Department of Energy

4 days ago· Wind power or wind energy is a form of renewable energy that harnesses the power of the wind to generate electricity. It involves using wind turbines to convert the turning motion ...

[Request Quote](#)



[A Comprehensive Guide to Wind Farm Construction](#)

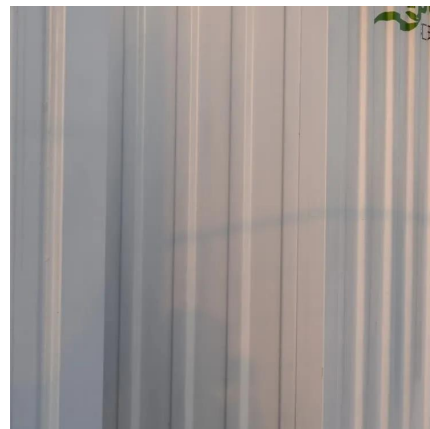
This guide walks you through the entire wind farm construction process, from initial planning to operation, and highlights why JMS Energy is a trusted partner in renewable energy ...

[Request Quote](#)

[\(PDF\) Small windturbines for telecom base stations](#)

The presentation will give attention to the requirements on using windenergy as an energy source for powering mobile phone base stations.

[Request Quote](#)



[Onshore Wind Farm Construction: Project Process](#)

This blog post is the fifth in a five-part series related to onshore wind energy. The series covers topics including wind turbine and wind farm ...

[Request Quote](#)



Cellular Base Stations

As you drive along the highway, you may notice cellular towers or cellular base stations appearing every few miles. A base station is the ...

[Request Quote](#)



Reliability prediction and evaluation of communication base stations ...

Earthquake disasters can cause collapse of houses, damage to communication base stations towers and transmission lines, resulting in the disruption of communication ...

[Request Quote](#)

mobile communication base stations

China's mobile communication base station market is poised for significant growth, driven by the rapid expansion of 5G technology and the increasing demand for high-speed ...

[Request Quote](#)





The importance of electromagnetic-impact analyses for wind ...

By being proactive and performing a pre-construction impact analysis, a wind farm developer may be able to avoid costly claims for remediation after the fact. His article is re ...

[Request Quote](#)

How to make wind solar hybrid systems for telecom stations?

Communication base stations and related equipment require continuous operation 24 hours a day. Only a continuous power supply from the power generation system can effectively ensure ...

[Request Quote](#)



Solar Powered Cellular Base Stations: Current Scenario, ...

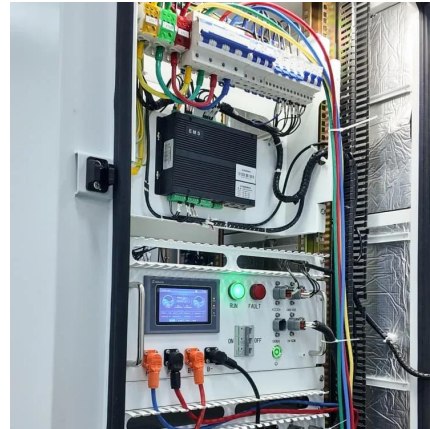
Cellular base stations powered by renewable energy sources such as solar power have emerged as one of the promising solutions to these issues. This article presents an overview of the ...

[Request Quote](#)

Wind - Telecommunications Impact Assessment

The next steps recommended to progress the wind development and address any potential impacts are defined and presented. We will then discuss with you the results and define a ...

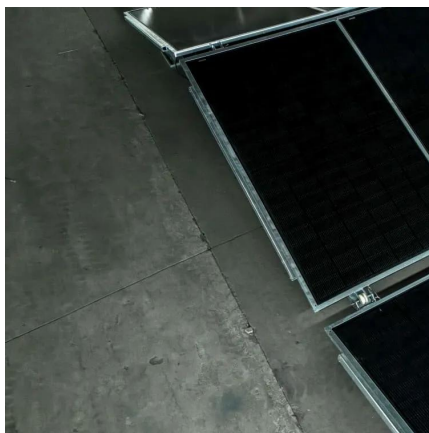
[Request Quote](#)



[Onshore Wind Farm Construction: Project Process & Scheduling](#)

Because the wind development may be on a large site, many miles of access roads may be required. A large wind farm may require building as many as 100 miles of access ...

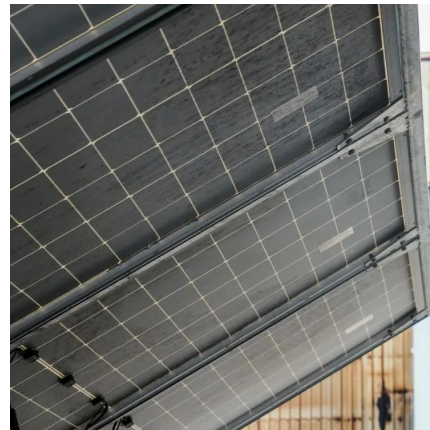
[Request Quote](#)



Base Station Antennas: Pushing the Limits of Wind Loading ...

By taking the time to refine measurement techniques to ensure the most accurate possible test results, we are now able to look at pushing the wind loading efficiency of base station antennas.

[Request Quote](#)



[A Comprehensive Guide to Wind Farm Construction](#)

This guide walks you through the entire wind farm construction process, from initial planning to operation, and highlights why JMS Energy is a ...

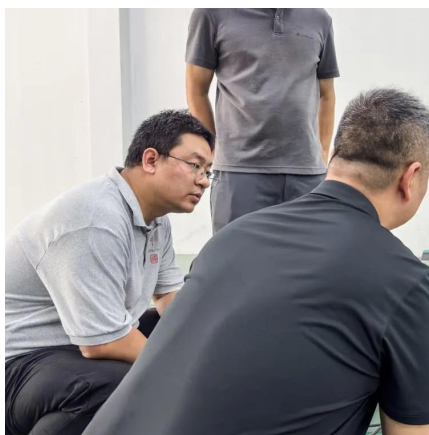
[Request Quote](#)



eCFR :: 47 CFR Part 27 Subpart C -

(a) The following power limits and related requirements apply to stations transmitting in the 2305-2320 MHz band or the 2345-2360 MHz band.

[Request Quote](#)



[The importance of electromagnetic-impact analyses ...](#)

By being proactive and performing a pre-construction impact analysis, a wind farm developer may be able to avoid costly claims for ...

[Request Quote](#)

[Long Range Drone: An In-Depth Guide \[New for 2025\]](#)

What is a long range drone? And what factors impact a drone's range? See top models + learn about drones and range in this in-depth guide.

[Request Quote](#)



[Wind Load Test and Calculation of the Base Station Antenna](#)

Among wind load measurement tests, the wind tunnel test simulates the environment most similar to the actual natural environment of the product and therefore is the most accurate test method.

[Request Quote](#)



Onshore Wind Farm Construction: Project Process

Because the wind development may be on a large site, many miles of access roads may be required. A large wind farm may require building as ...

[Request Quote](#)



Contact Us

For catalog requests, pricing, or partnerships, please visit:
<https://www.espaciovet.es>