

How many watts does a 540 solar panel have





Overview

A 540W Half-Cut Solar Panel refers to a photovoltaic panel that has a power output of 540 watts and employs a "half-cut" cell design. In a half-cut design, the solar cells on the panel are divided into two halves, which are then wired in series. How many cells are in a 540 watt solar panel?

To give you an idea, a standard 540 watt solar panel is approximately 88 x 46 inches and tips the scales at around 72 pounds. Most modules with this output rating are monocrystalline and typically have at least 72 cells (144 half-cut cells). Efficiencies vary widely from brand to brand, but most monocrystalline options fall into 18–22% range.

What is a 540w half cut solar panel?

A 540W Half-Cut Solar Panel refers to a photovoltaic panel that has a power output of 540 watts and employs a "half-cut" cell design. In a half-cut design, the solar cells on the panel are divided into two halves, which are then wired in series.

How much power does a 400W solar panel produce?

Optimal conditions: On a clear, sunny day, with the panel perfectly oriented towards the sun, a 400W panel might generate output close to its rated capacity. Typical conditions: Under average conditions, accounting for various influencing factors, you might expect an output between 320 to 360 watts during peak sunlight hours.

How to calculate solar panel wattage?

Also Check: – Hand Drying Footprint Calculator Calculating solar panel wattage involves a series of methodical steps: Determine the panel specifications: Locate the V_{mp} and I_{mp} values, which are typically provided on the panel's datasheet. Apply the formula: Multiply V_{mp} by I_{mp} to derive the maximum power output in watts.

What is the warranty on 540 W solar panels?



Installing 540 W solar panels is simple enough, despite their larger size compared to standard panels. They typically come with a 25-year warranty, though some higher-end brands offer 30-year protection. Use our solar calculator to determine the optimal size for your installation.

How many watts can a solar panel produce?

For example: A 100-watt panel can produce 100 watts per hour in direct sunlight. A 400-watt panel can generate 400 watts per hour under the same conditions. This doesn't mean they'll produce that amount all day, output varies with weather, shade, and panel orientation.



How many watts does a 540 solar panel have



[How Much Energy Does A Solar Panel Produce?](#)

On average, a solar panel can output about 400 watts of power under direct sunlight, and produce about 2 kilowatt-hours (kWh) of energy per day. Most ...

[Request Quote](#)

Solar Panel Wattage Calculator

This solar panel wattage calculator allows you to calculate the recommended solar panel wattage according to the energy consumption of ...

[Request Quote](#)



[What Size Solar Panel to Charge 12V Battery?](#)

Find out what size solar panel you need to charge a 12V battery FAST -- including 50Ah, 100Ah, 200Ah car, lithium, and deep cycle batteries.

[Request Quote](#)



Solar Panel Wattage Calculator

How Many Watts is a 400W Solar Panel? A 400-watt solar panel is rated to produce 400 watts of power under ideal standard test



conditions. In practical scenarios, the actual output may vary ...

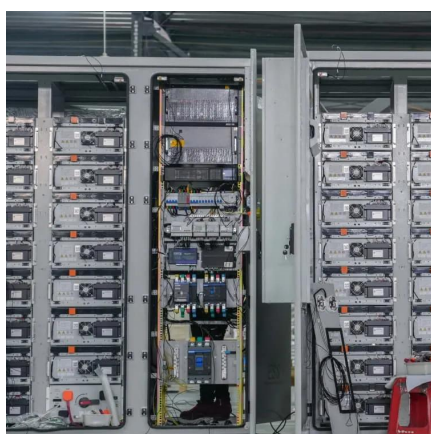
[Request Quote](#)



540 Watt Solar Panels

A good illustration of this pattern are 540 watt solar panels. They have one of the largest power outputs in the industry -- almost twice the typical. These panels are ideal for ...

[Request Quote](#)



[How Many Solar Panels Do I Need?: Calculate Your ...](#)

The average home requires between 15 and 34 solar panels. The average solar panel produces between 250 and 400 watts. Annual energy ...

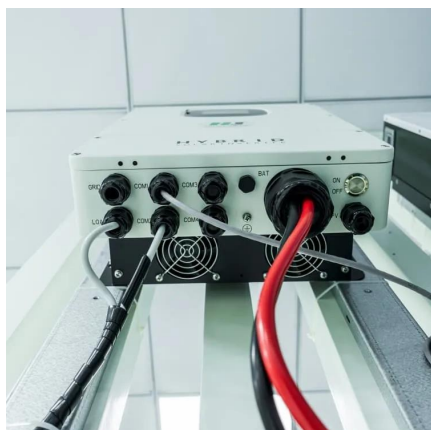
[Request Quote](#)



[What Size Solar Panel To Charge 100Ah Battery?](#)

Here is how this solar panel size calculator for 100Ah batteries works: Let's say that you have a 100Ah 24V deep cycle battery. You want the solar panel to ...

[Request Quote](#)





Solar Panels Sizes and Weights (All Sizes)

A 100-watt solar panel is not typically used to power a residential household. It can provide enough power for small household appliances but is ...

[Request Quote](#)



Bluebird 540 Watt Half Cut Solar Panels

A 540W Half-Cut Solar Panel refers to a photovoltaic panel that has a power output of 540 watts and employs a "half-cut" cell design. In a half-cut design, the solar cells on the panel are ...

[Request Quote](#)

Standard Solar Panel Sizes And Wattages (100W-500W ...

To bridge that gap of very useful knowledge needed, we have compared and averaged the sizes of 100-watt to 500-watt solar panels available on the market. The goal here is to get to the ...

[Request Quote](#)



Photovoltaic 540 Panel Size and Weight Key Insights for Solar ...

When planning a solar energy system, the photovoltaic 540 panel size and weight are critical factors for both residential and commercial installations. These panels, designed for high ...

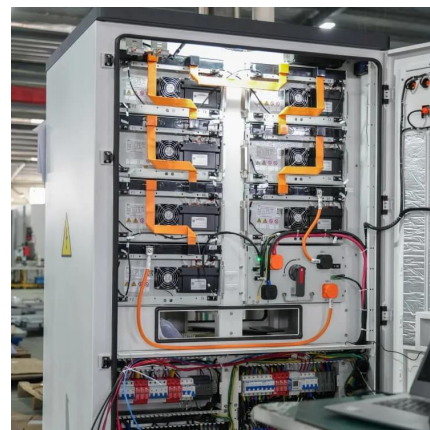
[Request Quote](#)



[400W Solar Panel Kit \(DIY\): What Size Battery, ...](#)

In this guide, you'll learn, how many batteries, What size charge controller, what size inverter & what size cable you'll need for a 400-watt solar ...

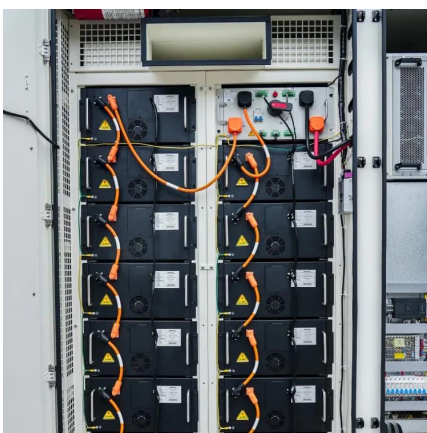
[Request Quote](#)



[How To Calculate How Much Power A Solar Panel ...](#)

A high-quality solar panel is able to convert sunlight into electricity with a high efficiency rate. The efficiency of a solar panel refers to how much ...

[Request Quote](#)



[Solar Panel Wattage Explained: How Many Watts Do ...](#)

Confused about solar panel wattage? Learn how many watts you need, how solar output works, and how to calculate the right solar setup for ...

[Request Quote](#)





[Solar Panel Size Calculator , Check Battery Charge ...](#)

Required Solar Panel Size (W): This column shows the calculated size of the solar panel in watts (W) needed to charge each battery under these ...

[Request Quote](#)

[MPPT charge controller calculator: Find the right solar ...](#)

MPPT Size Calculator The MPPT calculator has 6 input fields that will describe your solar energy system: 1- Solar panel wattage: This is the ...

[Request Quote](#)



Solar Panel Wattage Calculator

This solar panel wattage calculator allows you to calculate the recommended solar panel wattage according to the energy consumption of your household appliances.

[Request Quote](#)

[How Much Watts Solar Panel Do You Need for Home Appliances?](#)

Rating of Solar Panel PHourly = $480 \text{ W} / 6 \text{ Hrs} = 80 \text{ W} / \text{H}$ So you need a 80 watt solar panel. Its mean, you need 480 watts for 4 hours where 80W solar panel will produce 480 ...

[Request Quote](#)



[Solar Panel Wattage Explained: How Many Watts Do You Need?](#)

Confused about solar panel wattage? Learn how many watts you need, how solar output works, and how to calculate the right solar setup for your home, RV, or cabin.

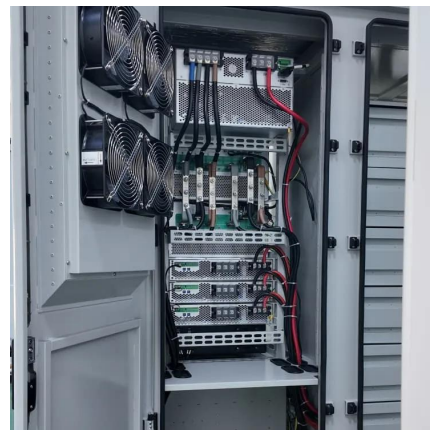
[Request Quote](#)



[Solar Panel Sizes and Wattage Explained](#)

Best Solar Panel Sizes and Wattage Calculator
This curated list includes top-brand calculators for determining panel size, output and battery ...

[Request Quote](#)



Solar Panel Size Calculator

Use our solar panel size calculator to find out the ideal solar panel size to charge your lead acid or lithium battery of any capacity and voltage. For example, 50ah, 100ah, ...

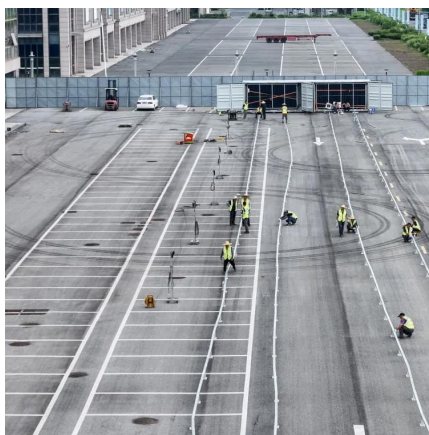
[Request Quote](#)



[Solar Panel Sizes and Wattage Explained](#)

Best Solar Panel Sizes and Wattage Calculator
This curated list includes top-brand calculators for determining panel size, output and battery capacity for your system along with ...

[Request Quote](#)



[150 watt Solar Panel: How Many Amps ...](#)

On Average, a 150-watt solar panel will produce about 600 watt-hours of DC power output per day. Considering 5 hours of peak sunlight and ...

[Request Quote](#)

[How Much Energy Does A Solar Panel Produce? , EnergySage](#)

If two solar panels have 20% efficiency ratings, but one has a power output rating of 350 watts and the other is rated at 400 watts, all that means is that the 400-watt panel is about ...

[Request Quote](#)



[Standard Solar Panel Sizes And Wattages \(100W ...](#)

To bridge that gap of very useful knowledge needed, we have compared and averaged the sizes of 100-watt to 500-watt solar panels available on the ...

[Request Quote](#)



540 Watt Solar panels for sale , Prices, dimensions, weight, ...

540 Watt Solar panels' range of prices, dimensions, sizes, voltage output, specifications datasheets Ranges of information Voltage: 31.1V ~ 66V Amp: 8.19A ~ 17.36A

[Request Quote](#)



Solar Panel Wattage Calculator

How Many Watts is a 400W Solar Panel? A 400-watt solar panel is rated to produce 400 watts of power under ideal standard test conditions. In practical ...

[Request Quote](#)

[540 Watt Solar Panel: Boost Your Energy Efficiency](#)

High Efficiency: With a capacity of 540 watts, these panels convert sunlight into electricity more efficiently than many traditional panels.
Space-Saving: Ideal for rooftops with ...

[Request Quote](#)





Contact Us

For catalog requests, pricing, or partnerships, please visit:
<https://www.espaciovet.es>