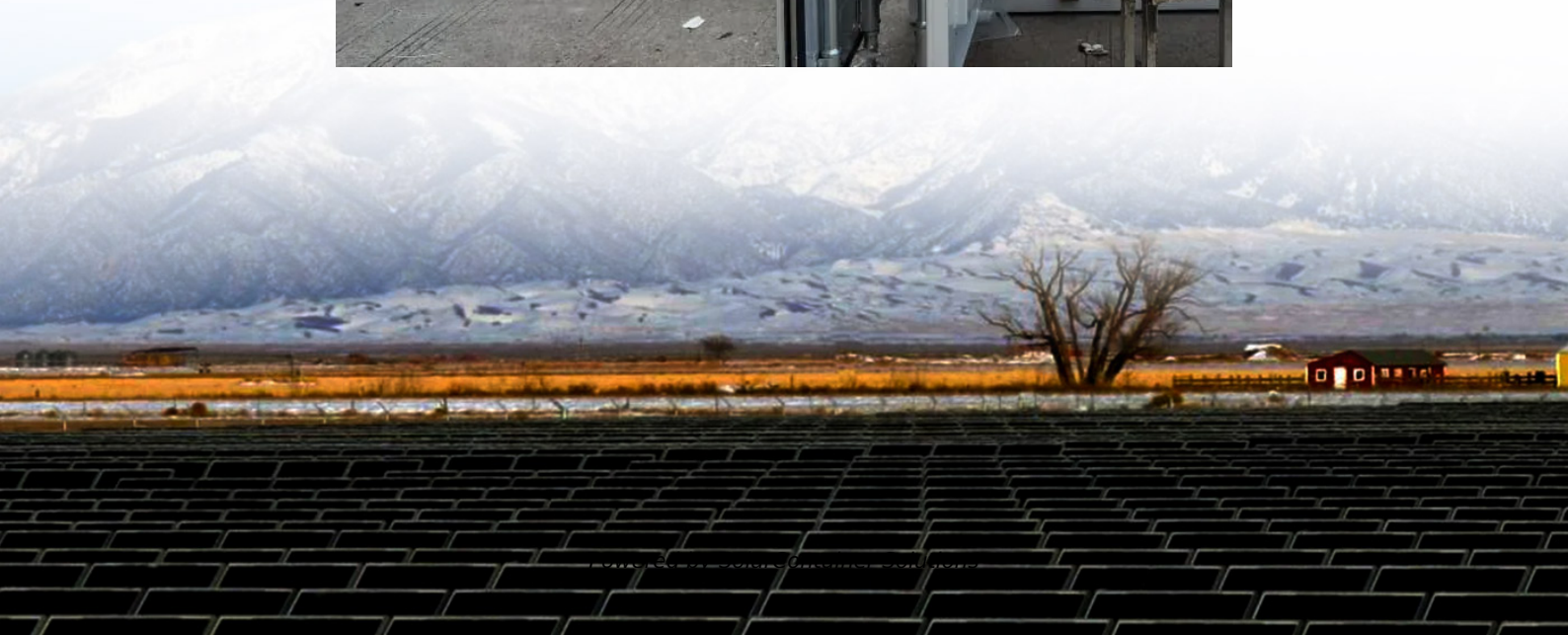


How many watts does the base station battery pack have





Overview

How many watts a battery can a power station produce?

Power stations typically mention the battery capacity in watt-hours (Wh), which, simply put, is the number of watts the battery could produce in an hour. So, for example, a 1000Wh battery could theoretically offer 1000Wh for an hour. However, that doesn't mean the power station can actually produce that much power.

Which battery is best for a power station?

While you can build a cheaper backup solution using lead-acid batteries or buy a power station featuring them, it's usually better to go for a power station with lithium-ion (Li-ion) or lithium iron phosphate (LFP) batteries.

How much power can a 1000wh battery produce?

So, for example, a 1000Wh battery could theoretically offer 1000Wh for an hour. However, that doesn't mean the power station can actually produce that much power. For example, a station might have 1000Wh of capacity, but produce only 500W of peak power, which would deplete the battery in two hours.

How many Power Packs can you connect to Alarm Pro?

Connect up to 3 Power Packs to Alarm Pro to keep it powered for 24 hours, depending on use. Each Ring Power Pack delivers up to 8 hours of backup battery to your Ring Alarm Pro and also works with your eero 6 Extender, sold separately.

Which battery is best for telecom base station backup power?

Among various battery technologies, Lithium Iron Phosphate (LiFePO₄) batteries stand out as the ideal choice for telecom base station backup power due to their high safety, long lifespan, and excellent thermal stability.



Why is battery capacity important when buying a power station?

Battery capacity is the most crucial consideration while shopping for a power station because it directly governs how long the connected devices will run on a single charge. Power stations typically mention the battery capacity in watt-hours (Wh), which, simply put, is the number of watts the battery could produce in an hour.



How many watts does the base station battery pack have



[Base Power Battery Specifications . Compare Models](#)

Compare Base Power's home battery systems - from our streamlined 20kWh wall-mount to our advanced 50kWh ground-mount solution. View complete technical specifications.

[Request Quote](#)

[POWER+ Nexus Portable Power Station , EGO](#)

The EGO Nexus Power Station is a battery-powered alternative to gas generators that delivers clean, quiet, portable power. It's safe to use indoors and out, so ...

[Request Quote](#)



[Xbox Series S \(Power consumption\) : r/XboxSeriesS](#)

How many watts does it draw when you first plug it in? I have a rechargeable battery pack that has a 150w ac outlet and it won't even start up the series s. I ...

[Request Quote](#)

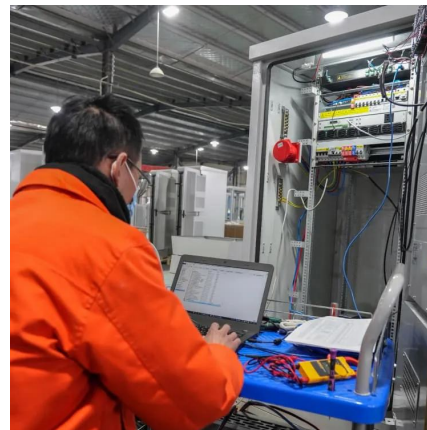
[What to Look for When Choosing a Power Station](#)

Power stations typically mention the battery capacity in watt-hours (Wh), which, simply put, is



the number of watts the battery could produce in an hour. So, for example, a ...

[Request Quote](#)



[Philips Dreamstation power requirements](#)

DreamStation Auto I see the power supply puts out a max of 12v @ 6.67A (80W). Any idea on what power the CPAP actually draws? (no heated hose, no humidifier) I'm looking ...

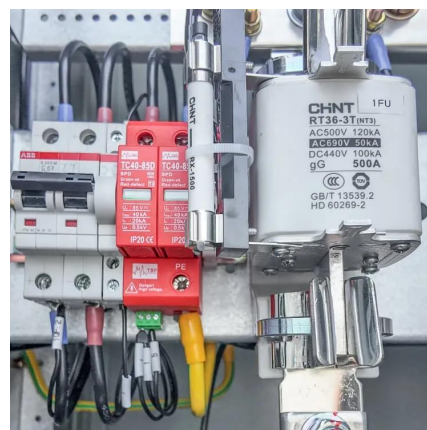
[Request Quote](#)



what kind of power supplies do you guys use for base station

Try to use a meter to see exactly how much output wattage your getting now just to see. The radio you have should be putting out 40W or close to it. A 12ah lifepo4 charged from ...

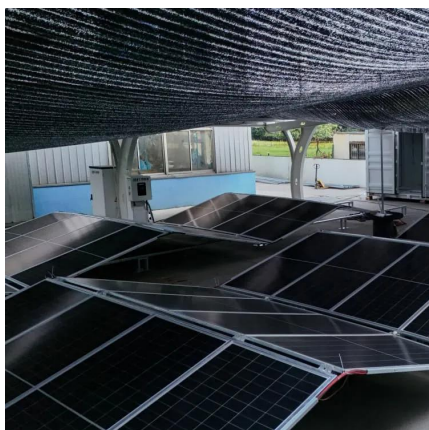
[Request Quote](#)



[What to Look for When Choosing a Power Station](#)

Power stations typically mention the battery capacity in watt-hours (Wh), which, simply put, is the number of watts the battery could produce in an ...

[Request Quote](#)





Ring Power Pack

Battery life varies depending on your specific usage and environmental factors. For example, Ring Power Packs may last longer if there is less video streaming and wifi usage.

[Request Quote](#)



[BioLite BaseCharge 600+ 622 Wh Portable Power Station](#)

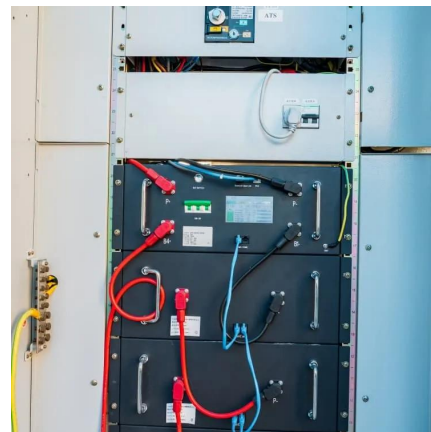
Upgraded 200W solar input means you can harness the sun twice as fast for more power. 25% more power than common midsize power stations without going up in physical size or weight. ...

[Request Quote](#)

[How many Watts does a CPAP use on Battery?](#)

I plug in my Resmed Airsense 10 CPAP to a battery pack to see how many Watts it uses. With external battery packs, you can take your CPAP camping or anywhere

[Request Quote](#)



[Technical Specifications for Ring Alarm Devices](#)

Ring Alarm Base Station: Internal rechargeable battery which lasts up to 24 hours of battery life.
Ring Alarm Contact Sensor (1st gen): Uses a 3V Lithium battery, included, which may last up ...

[Request Quote](#)



How Many Watts in a AA Battery?

Discover how many watts are in a standard AA battery and learn about its power capacity. Understand its usage and applications in this detailed guide.

[Request Quote](#)



[Base Power Battery Specifications . Compare Models](#)

Compare Base Power's home battery systems - from our streamlined 20kWh wall-mount to our advanced 50kWh ground-mount solution. View complete ...

[Request Quote](#)

12 Volt Battery Run Time Calculator

Do you have a 12v device you need to power but don't know what 12-volt battery you need? For those running a continuous 12-volt load, an adequately sized deep-cycle ...

[Request Quote](#)





Ring Power Pack - stackable backup battery for Ring Alarm Pro Base Station

Each Ring Power Pack delivers up to 8 hours of backup battery to your Ring Alarm Pro and also works with your eero 6 extender, sold separately. Connect up to 3 Power Packs to Alarm Pro ...

[Request Quote](#)

what kind of power supplies do you guys use for base station

Try to use a meter to see exactly how much output wattage your getting now just to see. The radio you have should be putting out 40W or close to it. A 12ah lifepo4 charged from a standard car ...

[Request Quote](#)



How Many Watts Do I Need for a Portable Power Station

It depends on your devices and usage--but most users require 300W to 2,000W for reliable power. Imagine being halfway through a camping trip when your fridge and phone die, ...

[Request Quote](#)



Telecom Base Station Backup Power Solution: Design Guide for ...

Discover the 48V 100Ah LiFePO4 battery pack for telecom base stations: safe, long-lasting, and eco-friendly. Optimize reliability with our design guide.

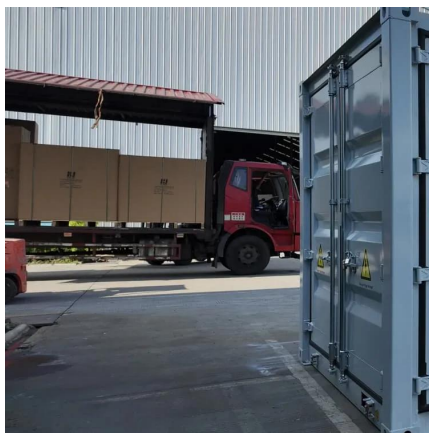
[Request Quote](#)



[How many watt hours do I need for a portable power station](#)

240Wh should get you at least 1 full night maybe two, my field battery comes with a car charger and a solar panel both will get it back to a full charge quickly never really tested the limits.

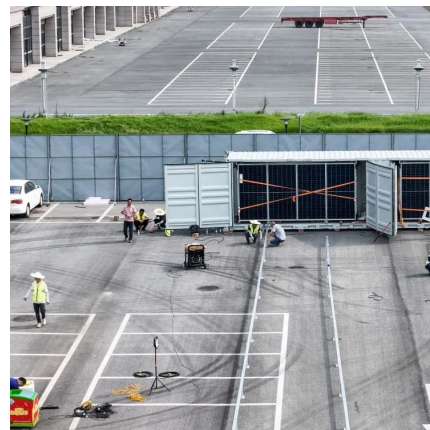
[Request Quote](#)



[Portable Power Station Size Calculator](#)

This Portable Power Station Size Calculator is a simple yet powerful tool that helps you determine the ideal power station capacity for ...

[Request Quote](#)



Portable Power Station Calculator

Calculate Battery Runtime for your portable power system Use our portable power station calculator below to calculate how many hours of run ...

[Request Quote](#)



[How To Calculate Watt-Hours Of A Battery? Easy 2 ...](#)

This is the best metric for battery capacity, not the amp-hours (like 100Ah, 200Ah battery, for example). Let's learn how to calculate the watt hours of a battery ...

[Request Quote](#)



[Battery Runtime Calculator: How Long Does Battery ...](#)

How long will your battery last? find out with our easy-to-use battery runtime calculator.. (12v, 24v, 50ah, 150ah, 100ah, 200ah, 50ah)

[Request Quote](#)



[Biolite BaseCharge 1500+ Review , Portable Power Station](#)

Compared to other portable power stations, including its predecessor, the BaseCharge 1500, the 1500+ can be recharged incredibly quickly, especially when you ...

[Request Quote](#)



[Telecom Base Station Backup Power Solution: Design ...](#)

Discover the 48V 100Ah LiFePO4 battery pack for telecom base stations: safe, long-lasting, and eco-friendly. Optimize reliability with our ...

[Request Quote](#)



Power supply for base station.

While this one is a bit more expensive than the one you looked at it does have ample current capacity to power your radio or a 50 watt model, many use this for 100 watt ...

[Request Quote](#)



[Base Station Battery Question : r/simplisafe](#)

It's also throwing a \$50-\$100 solution at a \$10 problem. I assume you have a simplisafe keypad or two in the house as well - those work well on 4 rechargeable AA's as well. So get a 16 pack (or ...

[Request Quote](#)

[Can A Portable Power Station Run A Coffee Maker?](#)

Consider the Battery Capacity and Output of The Power Station: A power station's battery capacity and output determine how long it can power your coffee ...

[Request Quote](#)





Contact Us

For catalog requests, pricing, or partnerships, please visit:
<https://www.espaciovet.es>