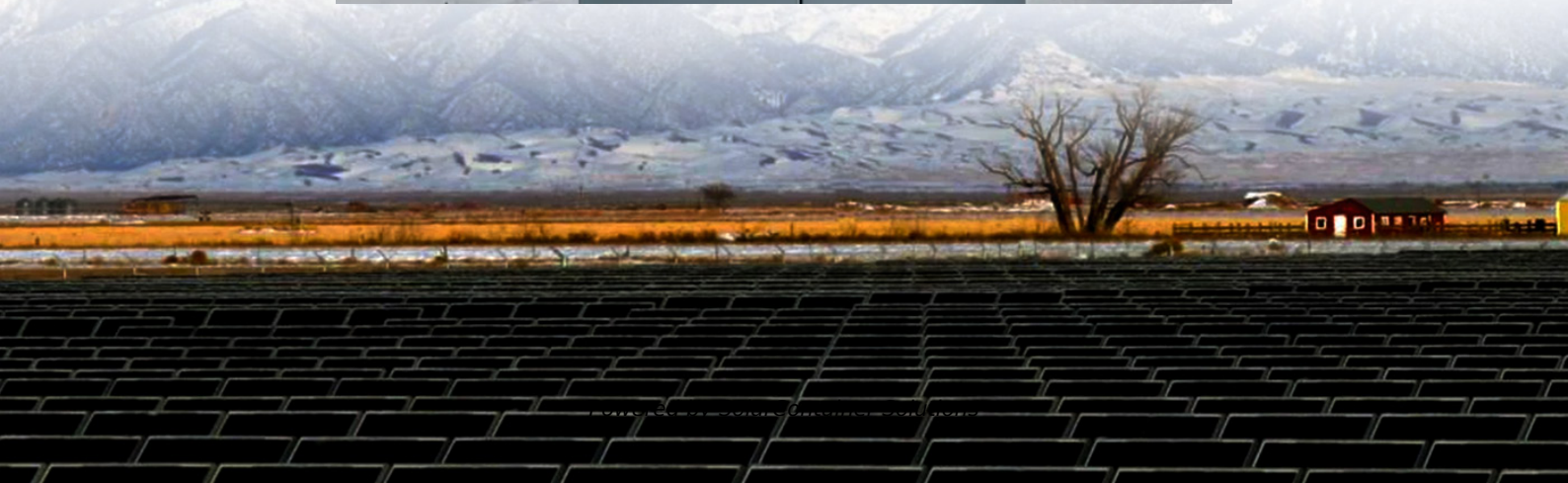


How much is the charging current of the communication base station battery





Overview

What makes a telecom battery pack compatible with a base station?

Compatibility and Installation Voltage Compatibility: 48V is the standard voltage for telecom base stations, so the battery pack's output voltage must align with base station equipment requirements. Modular Design: A modular structure simplifies installation, maintenance, and scalability.

What is a basic charging station?

Answer:: A basic charging station is when your DIY charging station has one plug for the devices and it requires an extension cord. This is the easiest type of DIY charging station to build. 9: What are some things to keep in mind when building a DIY charging station?

.

Which battery is best for telecom base station backup power?

Among various battery technologies, Lithium Iron Phosphate (LiFePO₄) batteries stand out as the ideal choice for telecom base station backup power due to their high safety, long lifespan, and excellent thermal stability.

How do you protect a telecom base station?

Backup power systems in telecom base stations often operate for extended periods, making thermal management critical. Key suggestions include: Cooling System: Install fans or heat sinks inside the battery pack to ensure efficient heat dissipation.

Why is backup power important in a 5G base station?

With the rapid expansion of 5G networks and the continuous upgrade of global communication infrastructure, the reliability and stability of telecom base stations have become critical. As the core nodes of communication networks, the performance of a base station's backup power system directly impacts



network continuity and service quality.

What makes a good battery management system?

A well-designed BMS should include: Voltage Monitoring: Real-time monitoring of each cell's voltage to prevent overcharging or over-discharging.

Temperature Management: Built-in temperature sensors to monitor the battery pack's temperature, preventing overheating or operation in extreme cold.



How much is the charging current of the communication base station



The Reason for Shortening the Service Life of Base Station ...

Therefore, the current base station battery undervoltage protection reference voltage is set too low, such as group owners time power failure, the battery will discharge ...

[Request Quote](#)

[Telecom Base Station Backup Power Solution: Design ...](#)

Discover the 48V 100Ah LiFePO4 battery pack for telecom base stations: safe, long-lasting, and eco-friendly. Optimize reliability with our ...

[Request Quote](#)



[Battery technology for communication base stations](#)

In order to ensure the reliability of communication, 5G base stations are usually equipped with lithium iron phosphate cascade batteries with high energy density and high charge and ...

[Request Quote](#)

[Communication Base Station Energy Solutions](#)

During the day, the solar system powers the base station while storing excess energy in the



battery. At night, the energy storage system discharges to ...

[Request Quote](#)



Etunimi Sukunimi

The Base purpose Station and of this to design thesis was a battery to study system, the current based on power the studies, consumption which would of the enable the electrical power ...

[Request Quote](#)



Telecommunication base station system working principle and ...

The system output load and battery charging current are provided by the solar module. If the output power of the solar module is not enough to provide all loads, it is ...

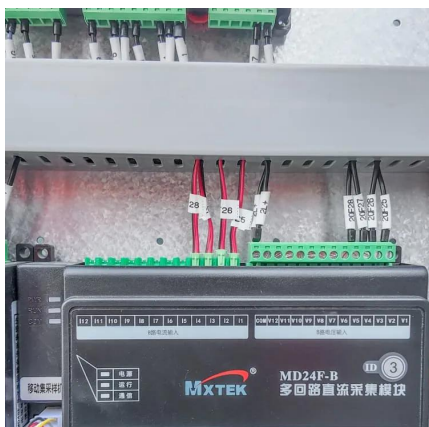
[Request Quote](#)



Base station battery output current

Can a stepped battery be used in a communication base station backup power system? In view of the characteristics of the base station backup power system, this paper proposes a design ...

[Request Quote](#)





[How much will it cost me to buy #communication base station?](#)

The EK photovoltaic control power system (EK-BC-R-Site) is designed for communication base stations, photovoltaic power stations, energy storage systems and off-grid/grid-connected ...

[Request Quote](#)



[Maintenance Points for Telecom Base Station Batteries](#)

When the charging current does not decrease for 3 consecutive hours, the charging is deemed to be terminated. (6) The float charge voltage of the battery is set according to the product ...

[Request Quote](#)

[Energy Storage for Communication Base](#)

The one-stop energy storage system for communication base stations is specially designed for base station energy storage. Users can use the energy storage ...

[Request Quote](#)



[Emergency/Backup Power for Ham Stations](#)

Assuming the voltages of fully discharged 12V batteries to be 11.1V (at Discharge Rate of around C/10 (0.1C) Amps), the maximum charging currents will be as follows:

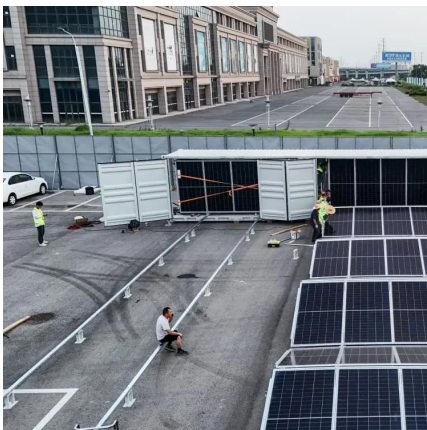
[Request Quote](#)



Selection and maintenance of batteries for communication base ...

Balanced charging (i.e. equalized charging):
Equalized charging is generally performed with constant voltage and current limiting, with a charging voltage of 2.35V/cell (ambient ...

[Request Quote](#)



[Understanding BMS Communication Protocols: ...](#)

BMS communication protocols are the rules that govern data exchange within a battery management system. They are essential for ...

[Request Quote](#)

[Communication Base Station Backup Battery](#)

When natural disasters cut off power grids, when extreme weather threatens power supply safety, our communication backup power system with intelligent charge/discharge management and ...

[Request Quote](#)





Selection and maintenance of batteries for communication base ...

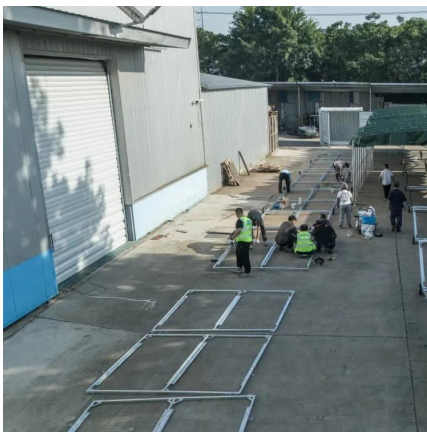
With the development of modern mobile communication technology, the construction of communication base stations is becoming more and more extensive. As an important part of ...

[Request Quote](#)

Backup LiFePO4 Battery for Communication Base Station 48V50Ah

The capacity levels of SIKE communication backup lithium iron phosphate battery system are 50Ah, 100Ah, 150Ah, and 200Ah. The battery module adopts a modular design and can be ...

[Request Quote](#)



Communication Base Station Energy Solutions

During the day, the solar system powers the base station while storing excess energy in the battery. At night, the energy storage system discharges to supply power to the base station, ...

[Request Quote](#)

Overview of Telecom Base Station Batteries

Definition Telecom base station battery is a kind of energy storage equipment dedicatedly designed to provide backup power for telecom base stations, ...

[Request Quote](#)



[Energy Storage for Communication Base](#)

The one-stop energy storage system for communication base stations is specially designed for base station energy storage. Users can use the energy storage system to discharge during ...

[Request Quote](#)



[DALY base station energy storage BMS solution for ...](#)

Provide comprehensive BMS (battery management system) solutions for communication base station scenarios around the world to help ...

[Request Quote](#)



[48V Telecom Base Station Battery Pack Power ...](#)

The battery pack is equipped with a maximum charge current of 100A and maximum discharge current of 100A, allowing you to charge and discharge ...

[Request Quote](#)





Maintenance Points for Telecom Base Station Batteries

(5) The charging capacity of the battery is generally not less than 1.2 times the discharged capacity. When the charging current does not decrease for 3 consecutive hours, the charging ...

[Request Quote](#)



Telecom Base Station Backup Power Solution: Design Guide for ...

Discover the 48V 100Ah LiFePO4 battery pack for telecom base stations: safe, long-lasting, and eco-friendly. Optimize reliability with our design guide.

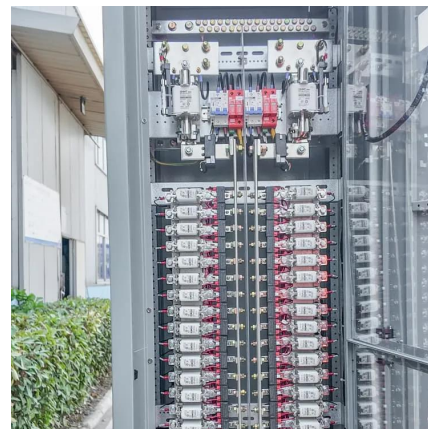
[Request Quote](#)



Battery specifications for communication base stations

With their small size, lightweight, high-temperature performance, fast recharge rate and longer life, the lithium-ion battery has gradually replaced the traditional lead-acid battery as a better option ...

[Request Quote](#)



Optimization of Communication Base Station Battery ...

In the communication power supply field, base station interruptions may occur due to sudden natural disasters or unstable power supplies. This ...

[Request Quote](#)



BMS for Telecom Base Station BES-01

BMS for Telecom Base Station ensures reliable connectivity at remote cell towers through safe battery management and backup power solutions.

[Request Quote](#)



Contact Us

For catalog requests, pricing, or partnerships, please visit:
<https://www.espaciovet.es>