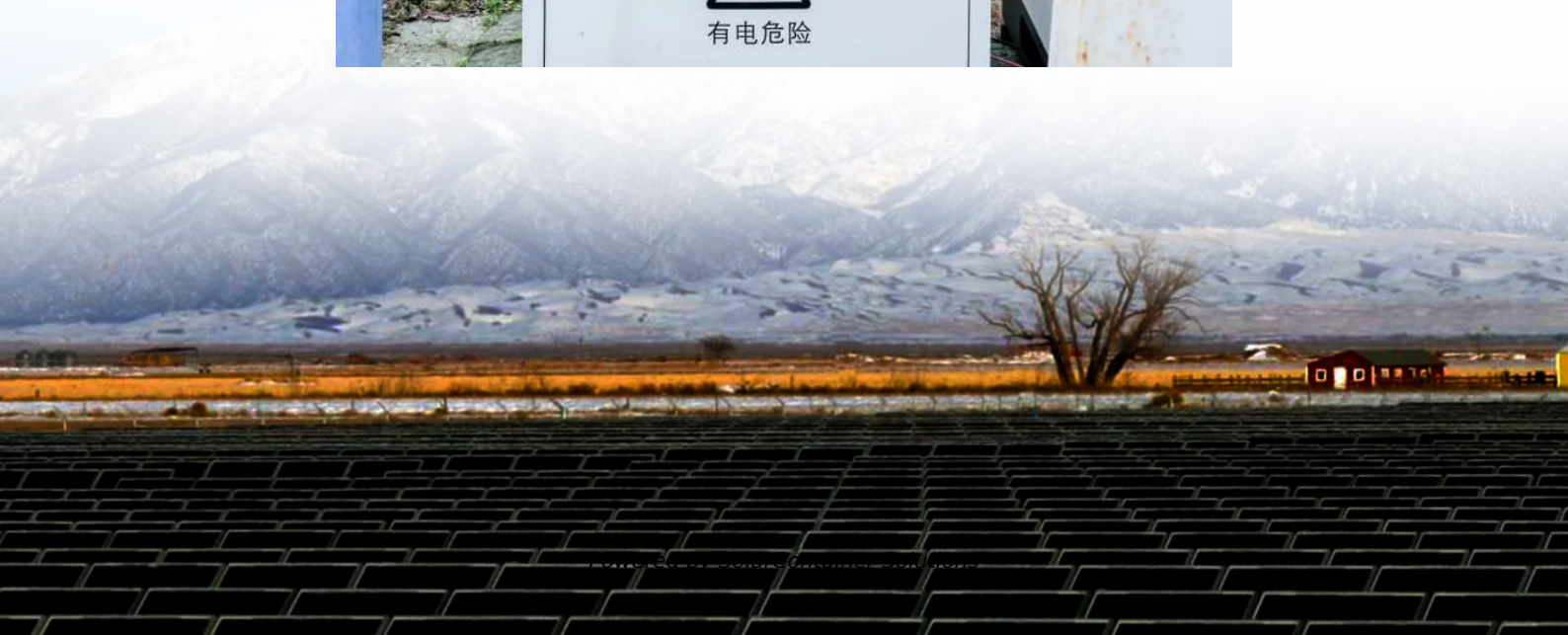


How much power does a 5G base station actually consume





Overview

The 5G NR standard has been designed based on the knowledge of the typical traffic activity in radio networks as well as the need to support sleep states in radio network equipment. By putting the base st.

How much power does a 5G station use?

The power consumption of a single 5G station is 2.5 to 3.5 times higher than that of a single 4G station. The main factor behind this increase in 5G power consumption is the high power usage of the active antenna unit (AAU). Under a full workload, a single station uses nearly 3700W.

Why does 5G use more power than 4G?

The data here all comes from operators on the front lines, and we can draw the following valuable conclusions: The power consumption of a single 5G station is 2.5 to 3.5 times higher than that of a single 4G station. The main factor behind this increase in 5G power consumption is the high power usage of the active antenna unit (AAU).

How much power will a 5G base station use in 2025?

The Small Cell Forum predicts the installed base of small cells to reach 70.2 million in 2025 and the total installed base of 5G or multimode small cells in 2025 to be 13.1 million. "A 5G base station is generally expected to consume roughly three times as much power as a 4G base station.

How much energy does a 5G small cell BS consume?

Simulation results reveal that more than 50% of the energy is consumed by the computation power at 5G small cell BS's. Moreover, the computation power of 5G small cell BS can approach 800 watt when the massive MIMO (e.g., 128 antennas) is deployed to transmit high volume traffic.

What is a 5G base station?

A 5G base station is mainly composed of the baseband unit (BBU) and the AAU — in 4G terms, the AAU is the remote radio unit (RRU) plus antenna. The role



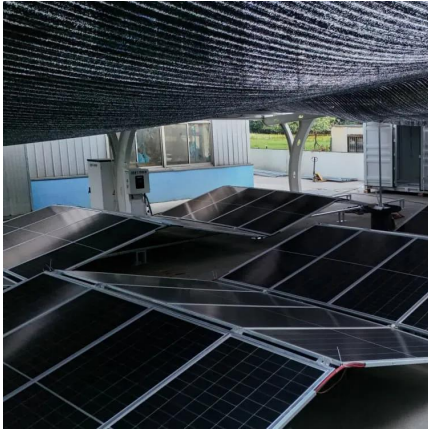
of the BBU is to handle baseband digital signal processing, while the AAU converts the baseband digital signal into an analog signal, and then modulates it into a high-frequency radio signal.

Does 5G reduce power consumption?

The latest cycle of technology investments around 5G and cloud operations are often discussed in terms of driving down power consumption on a per unit basis, but many new network deployments have a net increase in overall consumption. Consider 5G.



How much power does a 5G base station actually consume



What is the Power Consumption of a 5G Base Station?

These 5G base stations consume about three times the power of the 4G stations. The main reason for this spike in power consumption is the addition of massive MIMO and ...

[Request Quote](#)

Energy Consumption of 5G, Wireless Systems and the Digital ...

"A 5G base station is generally expected to consume roughly three times as much power as a 4G base station. And more 5G base stations are needed to cover the same area," -IEEE ...

[Request Quote](#)



What is 5G Energy Consumption?

5G Base Station Power Consumption: With each base station carrying at least 5X more traffic and operating over more frequency bands, 5G base station power consumption is at least twice ...

[Request Quote](#)

Why does 5g base station consume so much power ...

In addition to other small modules that use electricity, the power consumption of a single 5G



base station is generally around 3700 watts, ...

[Request Quote](#)



[A technical look at 5G energy consumption and performance](#)

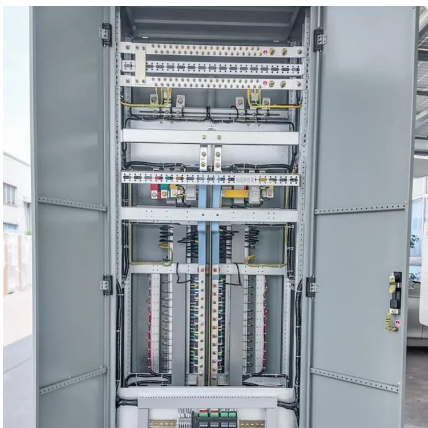
To understand this, we need to look closer at the base station power consumption characteristics (Figure 3). The model shows that there is significant energy consumption in the ...

[Request Quote](#)

How Much Power Does a 5G Base Station Consume? - Smart Solar

On average, a 5G base station consumes between 1,000 to 3,000 watts. This is significantly higher than 4G base stations, which typically consume 500 to 1,500 watts.

[Request Quote](#)



[Quantifying the energy cost savings from 2G/3G ...](#)

Many telcos publish data on their energy consumption, and sometimes provide breakdowns for different parts of the network. But there are no existing ...

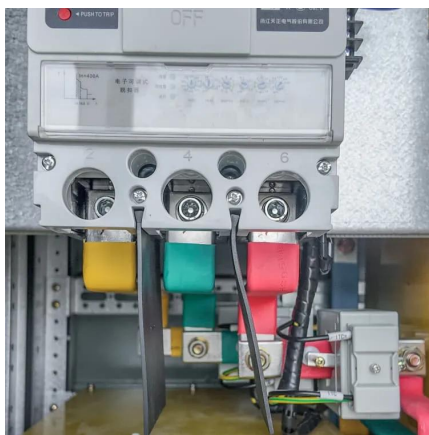
[Request Quote](#)



[How Much Power Does 5G Base Station Consume? , Huijue ...](#)

Have you ever wondered how much energy our hyper-connected world is consuming? 5G base stations, the backbone of next-gen connectivity, now draw 3-4 times more power than their 4G ...

[Request Quote](#)



How much power does 5G consume?

One 5G base station is estimated to consume about as much power as 73 households (6), and 3x as much as the previous generation of base stations ...

[Request Quote](#)

[Power consumption based on 5G communication](#)

At present, 5G mobile traffic base stations in energy consumption accounted for 60% ~ 80%, compared with 4G energy consumption increased three times. In the future, high-density ...

[Request Quote](#)



Energy-efficient 5G for a greener future , Nature Electronics

However, the total power consumption of the 5G base station is about four times that of the 4G. Considering the high deployment density of 5G base stations, the overall power ...

[Request Quote](#)



How much does a 5G base station cost?

Some places have to charge an entrance fee in addition to the rent, and the entrance fee is not cheap. In addition, many 5G base stations are actually modified from ...

[Request Quote](#)



Self-sufficient cell towers; when will cell sites go off ...

But the analyst firm says a typical 5G base station consumes up to twice or more the power of a 4G base station; it notes that the industry ...

[Request Quote](#)

Power Consumption: 5G Basestations Are Hungry, Hungry Hippos

5G basestations are pushing up power requirements by three times, as MIMO and more digital circuitry require more power.

[Request Quote](#)





How much energy will 5G consume?

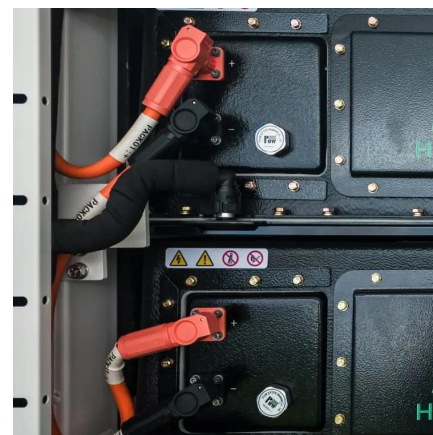
The impact on the device battery is being discussed as a reason why 5G may consume x3 more energy than 4G (Koziol, 2019). Past studies ...

[Request Quote](#)

5G Energy Efficiency Overview

Base station resources are generally unused 75 - 90% of the time, even in highly loaded networks. 5G can make better use of power-saving techniques in the base station part, ...

[Request Quote](#)



[Chifukwa chiyani 5g base station imadya mphamvu zambiri ...](#)

Chifukwa chiyani base station imawononga magetsi? Zotsatirazi zikupereka zotsatira za kuyesa kutsogolo kwa akatswiri, ndikugwiritsa ntchito mphamvu kwa Huawei ndi ...

[Request Quote](#)



[Here's how much a 5G wireless network really costs](#)

It should cost up to \$76,000 to rent a helicopter to lift a 5G radio on top of a cell tower. (That's the price for up to 3,200 pounds of equipment and the 6-hour day rate plus the ...

[Request Quote](#)



5G base stations consume too much power, and the three major ...

The electricity bill for a single 4G station is about 7,000 yuan per year, while the electricity bill for 5G base stations is 23,000 per year. 5G base stations cost hundreds of ...

[Request Quote](#)



How much power does 5G consume?

One 5G base station is estimated to consume about as much power as 73 households (6), and 3x as much as the previous generation of base stations (5), (7). When base stations, data centers ...

[Request Quote](#)



Does 5G require electricity?

One 5G base station is estimated to consume about as much power as 73 households (6), and 3x as much as the previous generation of base stations (5),(7). Takedown request , View ...

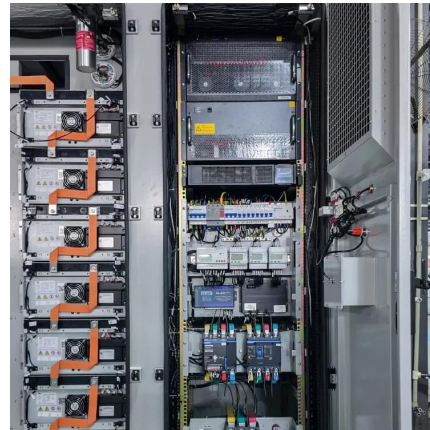
[Request Quote](#)



Energy Consumption of 5G, Wireless Systems and ...

"A 5G base station is generally expected to consume roughly three times as much power as a 4G base station. And more 5G base stations are needed to cover ...

[Request Quote](#)



Front Line Data Study about 5G Power Consumption

The power consumption of a single 5G station is 2.5 to 3.5 times higher than that of a single 4G station. The main factor behind this increase in 5G power consumption is the high power ...

[Request Quote](#)

Do Cell Phone Towers Cause Cancer? , American ...

This could result in the antennas being closer to people, although small cells typically operate at much lower power levels than the larger (macro) base ...

[Request Quote](#)



5G base stations consume so much power that operators are ...

Night sleep can be understood as a flexible adjustment to reduce power consumption and save power. Tower told News that the current average power consumption of a single tenant of a ...

[Request Quote](#)



Why does 5g base station consume so much power and how to ...

In addition to other small modules that use electricity, the power consumption of a single 5G base station is generally around 3700 watts, which is about three times that of 4G ...

[Request Quote](#)



[The power supply design considerations for 5G base ...](#)

An integrated architecture reduces power consumption, which MTN Consulting estimates currently is about 5% to 6 % of opex. This percentage ...

[Request Quote](#)

Contact Us

For catalog requests, pricing, or partnerships, please visit:
<https://www.espaciovet.es>