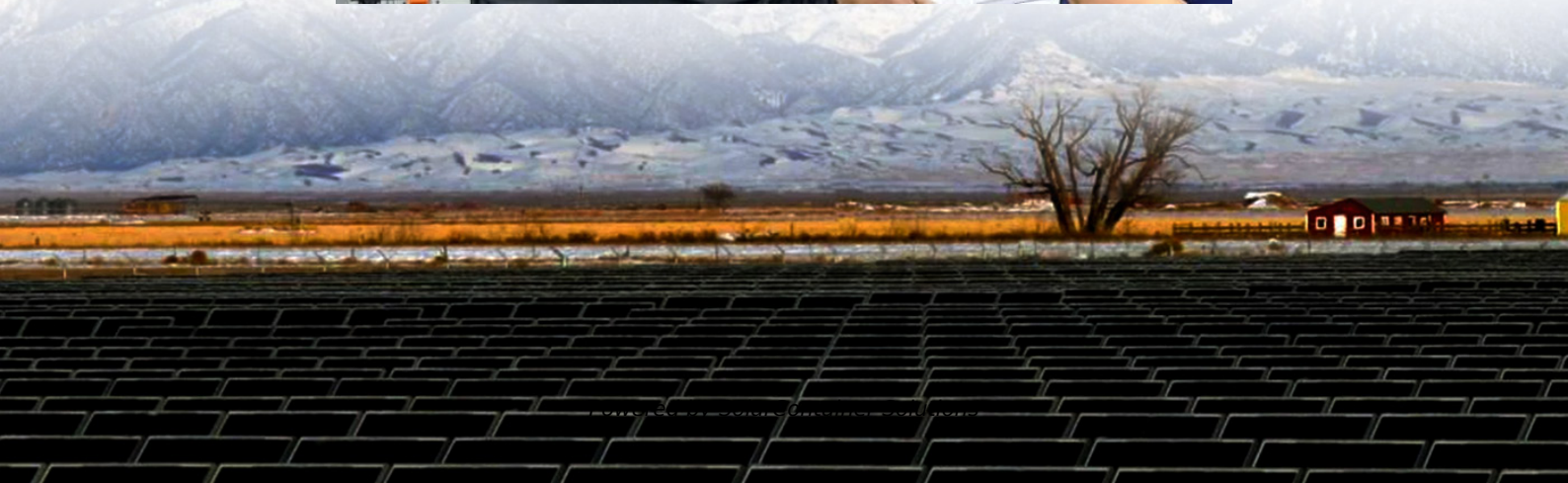
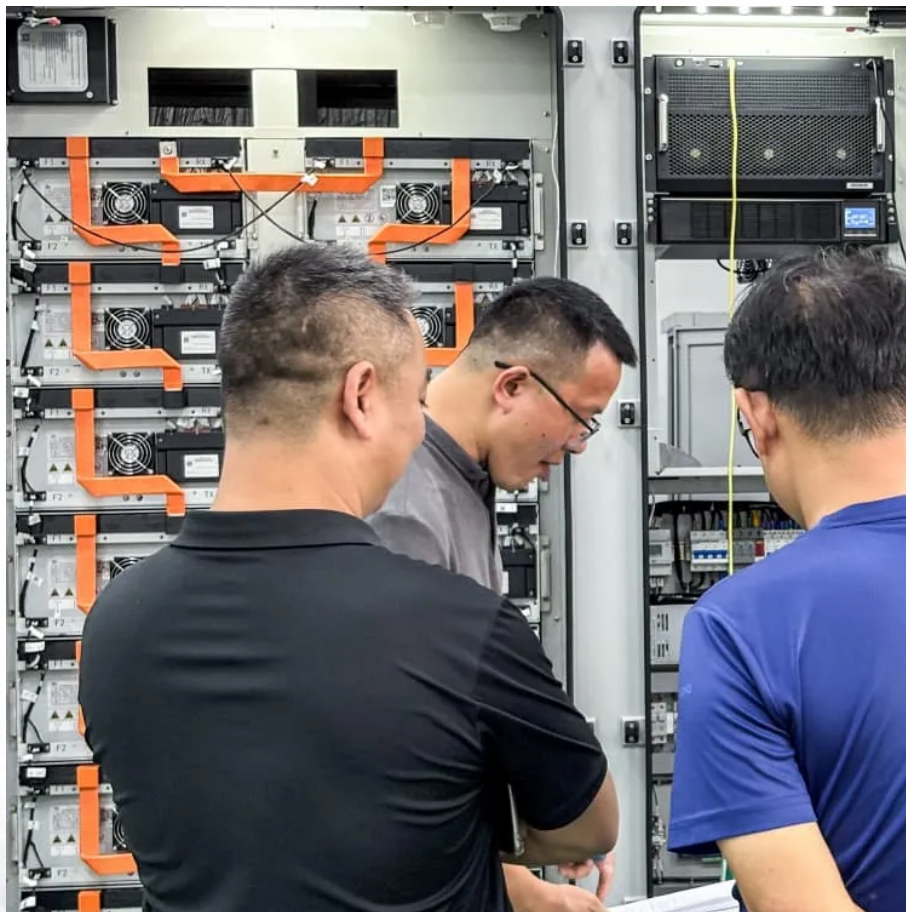


# **How to connect a finished lithium battery station cabinet in parallel to a power supply**





## Overview

---

How do I connect lithium batteries in parallel?

Follow these steps to connect lithium batteries in parallel effectively: Ensure that all batteries are fully charged to the same voltage level. Inspect the batteries for any physical damage or signs of wear. Replace any damaged batteries. Consult the manufacturer's instructions and install the BMS according to their guidelines.

How many lithium batteries can be connected in parallel?

It recommends a maximum battery bank size of four lithium batteries of equal voltage and amperage. For example, you can connect two 200Ah lithium batteries in parallel. Invicta also allows up to 4 batteries in parallel. All Invicta lithium batteries can be configured into a parallel configuration, providing you meet the manufacturer's conditions.

Why should you connect multiple lithium batteries in parallel?

Rechargeable lithium batteries such as ours are widely used in various applications, from portable electronics to renewable energy systems. Connecting multiple lithium batteries in parallel can be a smart way to increase capacity and achieve longer-lasting power sources.

Should lithium ion batteries be wired in series or parallel?

When wiring lithium-ion batteries in series, the voltage is changed which can damage equipment if not performed with caution and great understanding. In contrast, wiring lithium batteries in parallel keeps the voltage the same while simply giving the batteries the ability to supply that same voltage level for longer.

What happens when lithium batteries are wired in parallel?

When lithium batteries are wired in parallel, their positive terminals are connected together, and their negative terminals are also linked. This creates



a parallel system that keeps the voltage the same across all batteries (e.g., a 12-volt battery bank stays at 12 volts) while combining the capacities of the individual batteries.

Can enerdrive run lithium batteries in parallel?

Enerdrive supports running its B-TEC batteries lithium batteries in parallel. It recommends a maximum battery bank size of four lithium batteries of equal voltage and amperage. For example, you can connect two 200Ah lithium batteries in parallel. Invicta also allows up to 4 batteries in parallel.



## How to connect a finished lithium battery station cabinet in parallel

---



### [Connecting Lithium Batteries in Parallel](#)

By following the step-by-step guide provided in this article and considering the necessary precautions, you can successfully connect lithium batteries in ...

[Request Quote](#)

### Connecting batteries in parallel - BatteryGuy Knowledge Base

The basic concept is that when connecting in parallel, you add the amp hour ratings of the batteries together, but the voltage remains the same. For example: two 6 volt 4.5 Ah ...

[Request Quote](#)



### How to Connect Multiple Rack Lithium Batteries in Series or ...

How to Connect Multiple Rack Lithium Batteries in Series or Parallel? Connecting rack lithium batteries involves series (voltage addition) or parallel (capacity addition) ...

[Request Quote](#)



### [How to Charge Two Batteries in Parallel: Step-by-Step](#)

In this article, we'll guide you on charging two batteries in parallel, explain key considerations





and safety tips when batteries in parallel charging.

[Request Quote](#)



## How to Connect Multiple Rack Lithium Batteries in Series or Parallel

How to Connect Multiple Rack Lithium Batteries in Series or Parallel? Connecting rack lithium batteries involves series (voltage addition) or parallel (capacity addition) ...

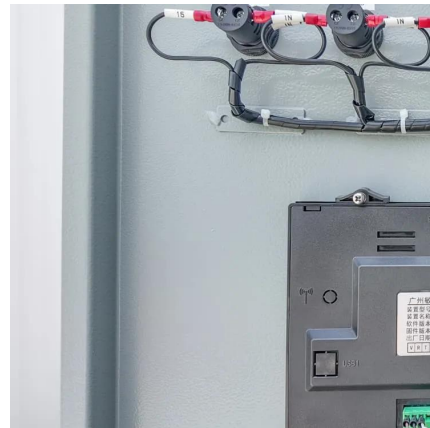
[Request Quote](#)



## [Connecting Batteries in Parallel to Extend Runtime](#)

Learn how to connect batteries in parallel to extend runtime for solar systems, RVs, and backup power setups

[Request Quote](#)



## [How to Connect Batteries in Parallel](#)

Connecting multiple lithium batteries in parallel can be a smart way to increase capacity and achieve longer-lasting power sources. However, doing this improperly can result ...

[Request Quote](#)



## [Connect Batteries in Series and Parallel: What's the ...](#)

Are you frustrated trying to figure out how to boost your battery system's power? I get it--choosing between series and parallel can feel ...

[Request Quote](#)



## [Lithium Battery Wiring: Ensure Reliable Power](#)

1 day ago · A lithium battery series string raises the system voltage for inverters and high-voltage DC tools. A parallel bank increases amp-hours for longer runtime at the same voltage.

[Request Quote](#)

## [Batteries in Series vs Parallel: Which is Better](#)

To meet your power needs when you require more than one battery, there are two ways to set up your battery connection: a series ...

[Request Quote](#)



## **How to Connect Go Power! ADV-Lithium Batteries in Series AND Parallel**

This video will walk through the setup your multi-battery bank configuration if it is in SERIES AND PARALLEL. For this video we're using four 100AH Lithium batteries creating a 24V 200AH bank

[Request Quote](#)



### [Wiring Batteries in Parallel: Understanding the ...](#)

Learn how to wire batteries in parallel to boost capacity and extend power. Step-by-step guide for efficient battery connections.

[Request Quote](#)



### [Connecting Lithium Batteries in Parallel](#)

By following the step-by-step guide provided in this article and considering the necessary precautions, you can successfully connect lithium batteries in parallel while ensuring safety ...

[Request Quote](#)

### [How To Connect Batteries In Series And Parallel?](#)

While researching lithium batteries, you've probably seen the terms series and parallel mentioned. We are frequently asked the questions like, ...

[Request Quote](#)





### [GP-LiFePO4-100 / Lithium Batteries \(LiFePO4\) / How ...](#)

Find wiring instructions for lithium batteries with tips on secure connections and parallel connection notes.

[Request Quote](#)

### [How to Install and Parallel Lithium Batteries](#)

Step by step on how to install and parallel Lithium Batteries #inverter #solarinverter #solarinstallation #solarpanel #lithiumbattery @JinkoSolarCoLtd @MUST

[Request Quote](#)



### [Make your Life Easy with Parallel Portable Power Stations](#)

Are you interested in using a portable power station so that you may benefit from all of its features? To simplify your life, choose a portable power station from Daranener. You may ...

[Request Quote](#)

## **Learn How to Connect Lithium Batteries with Different Amp Hours**

Discover how to connect lithium batteries of varying amp hours safely. Increase voltage, expand capacity, and optimize performance with our expert guide.

[Request Quote](#)





## Connecting Lifepo4 Batteries in Parallel or Series For Beginners

#offgrid #diysolar #lifepo4battery #vanlife #solar #shtf How to connect your solar batteries in either parallel for a 12v system, or in series for a 24v system.

[Request Quote](#)



## Connecting Lithium Batteries in Parallel: What You Need to Know

Planning to connect lithium batteries in parallel? Read our essential guide to learn the right way to set up your battery bank for more power.

[Request Quote](#)



## Wiring Batteries in Parallel: Understanding the Dangers and ...

Wiring batteries in parallel is a common practice to increase capacity and extend the runtime of battery-powered systems, such as in solar systems and off-grid applications. ...

[Request Quote](#)

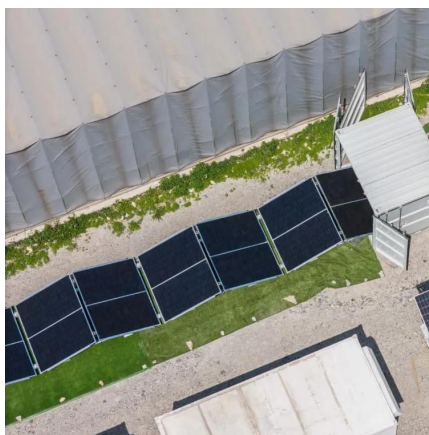




### [How to Connect Batteries in Parallel](#)

Connecting multiple lithium batteries in parallel can be a smart way to increase capacity and achieve longer-lasting power sources. However, ...

[Request Quote](#)



### [How to Connect Multiple Lithium Batteries in a Golf Cart](#)

Connecting multiple lithium batteries in a golf cart involves series or parallel wiring to match voltage and capacity requirements. For example, two 36V LiFePO4 batteries in ...

[Request Quote](#)

### [Parallel Wiring with Anderson Connectors](#)

The batteries I recently purchased (24v LifePo) come with an Anderson Connector output already wired in. My question is what is the best way to connect 3 of these batteries in ...

[Request Quote](#)



### [Lithium Series, Parallel and Series and Parallel](#)

Connecting multiple lithium batteries into a string of batteries allows us to build a battery bank with the potential to operate at an increased voltage, or with increased capacity and runtime, or both.

[Request Quote](#)



## [How To Wire Lithium Batteries In Parallel Increase ...](#)

In this article, we will explain how to wire lithium batteries in parallel to increase amperage and capacity. We will also explain a few use cases ...

[Request Quote](#)



## **How to Connect different makes of Lithium-Ion Batteries in Parallel**

Two different makes of Lithium-Ion Batteries can be connected in parallel, and this works very well. I show in this video how it is done step by step. Links w

[Request Quote](#)

## [How To Wire Lithium Batteries In Parallel Increase Amperage](#)

In this article, we will explain how to wire lithium batteries in parallel to increase amperage and capacity. We will also explain a few use cases where wiring lithium batteries in ...

[Request Quote](#)





## Contact Us

---

For catalog requests, pricing, or partnerships, please visit:  
<https://www.espaciovet.es>