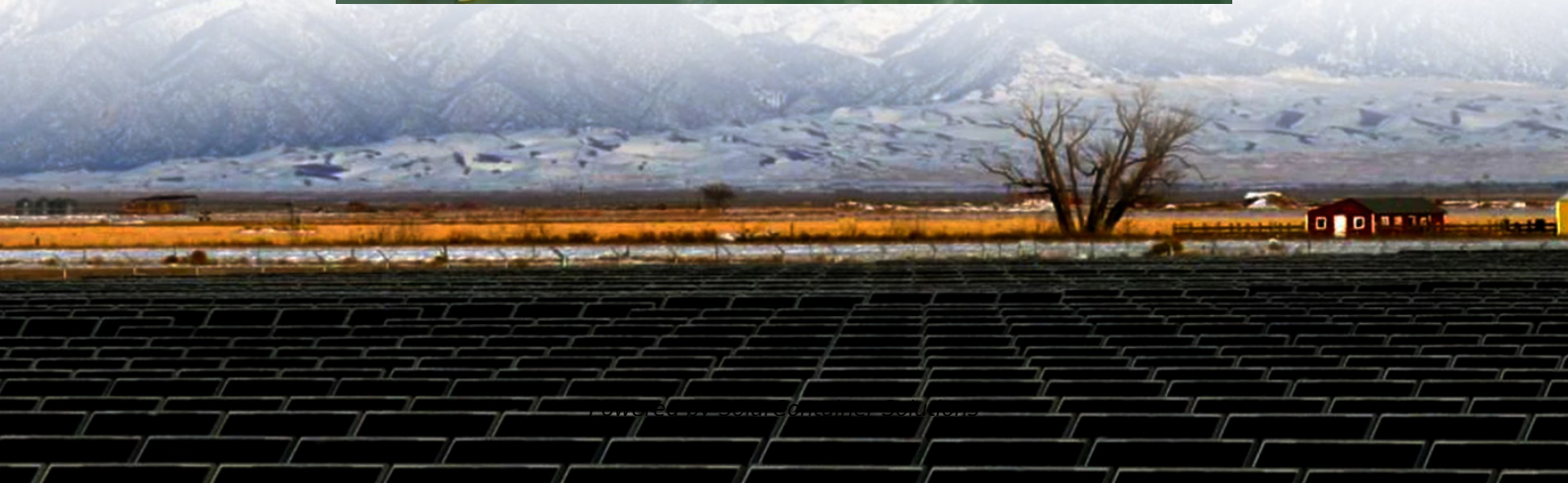


How to connect the power distribution cabinet of the communication base station





Overview

How does the power distribution cabinet work?

The Power Distribution Cabinet provides two smart slots that allow you to connect the SNMP card, or use RS232 interface to connect to the workstation. The six built-in dry contacts allow you to connect an external device. Infrasuite Power Management7 2.6 Appearance 2.6.1 Appearance of the Cabinet (Figure 2-1: Appearance).

How to install a power distribution cabinet?

The Power Distribution Cabinet should be placed and installed on a floor with concrete structure or made of other solid and non-combustible materials. The interior space should have good ventilation as well as temperature and humidity control, and keep away from gas and corrosive substances.

How to check the status of a power distribution cabinet?

The LCD monitor of the Power Distribution Cabinet can display the current system status and event logs, and allows you to set and view parameters. If the back light is not lit, pressing any button will activate it. On the initial status screen, you can view the system date and time as well as the switch- board circuit breaker status.

What power levels can a power distribution cabinet use?

You can flexibly choose different power levels (30kVA, 50kVA, 80kVA, 100kVA or 125kVA) according to your power demands to your system. The Power Distribution Cabinet can be used with a transformer for voltage conversion, or installed with Transient Voltage Surge Suppressors (TVSS) to protect highly sensitive equipment.

What is a base station power cabinet?

The base station power cabinet is a key equipment ensuring continuous power supply to base station devices, with LLVD (Load Low Voltage Disconnect) and



BLVD (Battery Low Voltage Disconnect) being two important protection mechanisms in the power cabinet.

How do I set a power distribution cabinet alarm?

6.6 Alarm Function Settings To make the Power Distribution Cabinet play its monitoring alarm role, you must set each alarm value for the system, switchboards and branches and set the alarming switches. When the system detects abnormal conditions, it will alert the user through the buzzer, and record in the alarm log.



How to connect the power distribution cabinet of the communication



[DCS System Layout and its Different Parts](#)

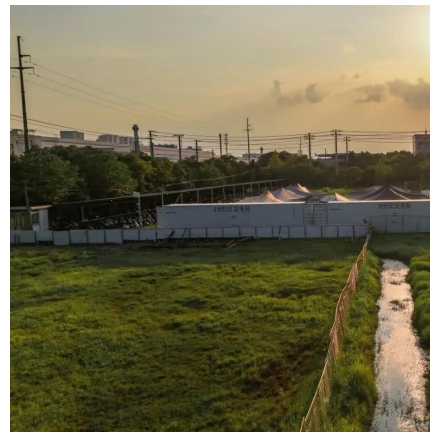
The different parts of DCS system layout are processors, marshalling & system cabinets, engineering & operator workstations, and Switch.

[Request Quote](#)

5G Base Station

5G base station is the core equipment of 5G network, which provides wireless coverage and realizes wireless signal transmission between wired communication network ...

[Request Quote](#)



[Wiring Diagram for an Intercom System](#)

The wiring diagram will show the connections for power supply, audio communication, and control signals. It will also indicate any additional components such as relays, transformers, or ...

[Request Quote](#)

[What is a Base Station in Telecommunications?](#)

What is a Base Station? A base station is a critical component in a telecommunications



network. A fixed transceiver that acts as the central ...

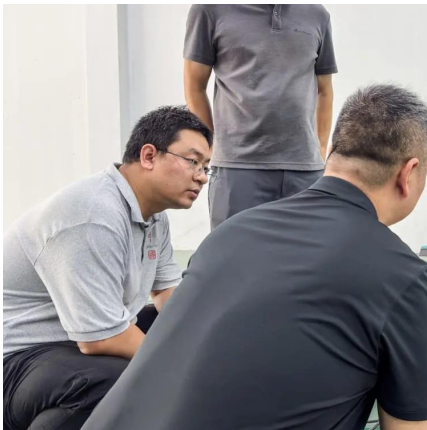
[Request Quote](#)



[Energy storage system of communication base station](#)

Base station energy cabinet: floor-standing, used in communication base stations, smart cities, smart transportation, power systems, edge sites and other scenarios to provide stable power ...

[Request Quote](#)



[TB9400 Installation and Operation Manual](#)

This power supply is permanently on as soon as the base station has finished powering up, and is available on the auxiliary output connector on the rear panel. You can connect multiple ...

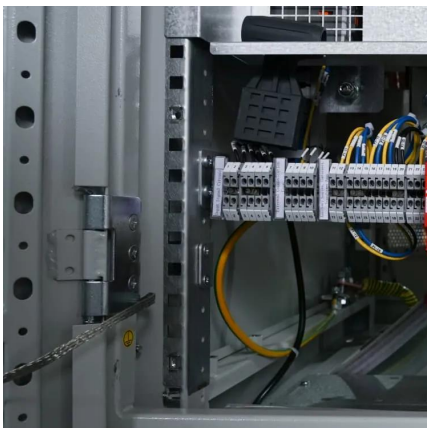
[Request Quote](#)



[Substation communication systems - Automation ...](#)

Communication equipment cabinet The upper portion of the communication equipment cabinet contains communication equipment for ...

[Request Quote](#)





[What is a base station and how are 4G/5G base ...](#)

A base station is referred to a stationary trans-receiver used in telecommunications that serves as the primary hub for connectivity of wireless ...

[Request Quote](#)



[FLO SmartTWOTM Public EV chargers Installation Guide](#)

Hello! I am an AI chatbot specifically trained to assist you with the Flo SmartTWOTM Public EV chargers Installation Guide. I have thoroughly reviewed the document and can help you locate ...

[Request Quote](#)

[Types and Applications of Mobile Communication ...](#)

Mobile communication base station is a form of radio station, which refers to a radio transceiver station that transmits information between mobile ...

[Request Quote](#)



Base Stations

Backhaul Connection: The backhaul connection links the base station to the core network in the mobile communication system. It provides for ...

[Request Quote](#)



[LLVD & BLVD in Base Station Power Cabinets](#)

It is hoped that this article will help readers fully understand the importance of LLVD and BLVD in base station power cabinets and provide references for ...

[Request Quote](#)



[Communications System Power Supply Designs](#)

Voice-over-Internet-Protocol (VoIP), Digital Subscriber Line (DSL), and Third-generation (3G) base stations all necessitate varying degrees of complexity in power supply design. We ...

[Request Quote](#)

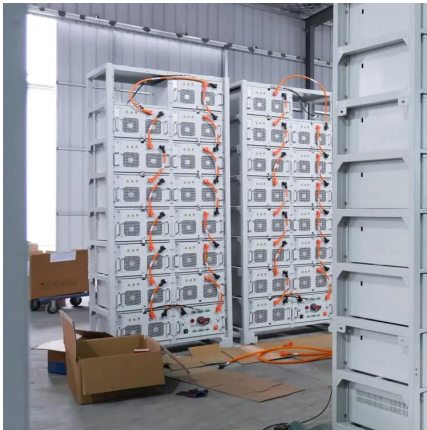


[How to Properly Install and Set Up a Network Cabinet System](#)

Installing and setting up a network cabinet system correctly is essential for maintaining an efficient and organized network infrastructure. In this comprehensive guide, we ...

[Request Quote](#)





[501321470101_PDC_Single_EN_20150108_print.pdf](#)

The Power Distribution Cabinet provides two smart slots that allow you to connect the SNMP card, or use RS232 interface to connect to the work-station. The six built-in dry contacts allow ...

[Request Quote](#)

Base Stations

Backhaul Connection: The backhaul connection links the base station to the core network in the mobile communication system. It provides for the interchange of data between ...

[Request Quote](#)



[Ensemble Communications LMDS Base Station Transceiver](#)

Use the provided #10 screw to route the -48 VDC power and return conductors to the Power Distribution Frame (PDF) on the power and ground barrier strip for each conductor.

[Request Quote](#)



[Process of Installing a Base Transceiver Station \(BTS\) ...](#)

Installing a Base Transceiver Station (BTS) is a critical step in building mobile communication networks. Here's a step-by-step guide to the ...

[Request Quote](#)



How to Install a -48V Telecom Power System: A Step-by-Step ...

Learn how to install a -48V telecom power system step-by-step. This guide covers equipment selection, design considerations, wiring, and essential maintenance tips for reliable ...

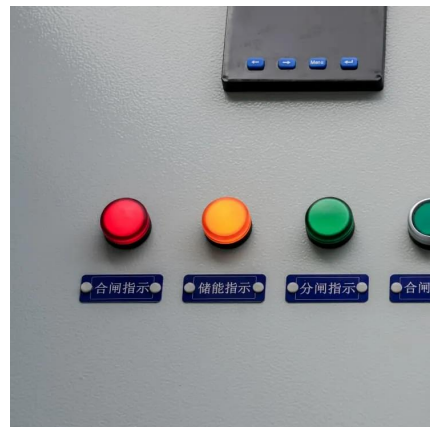
[Request Quote](#)



[How to Properly Install and Set Up a Network Cabinet ...](#)

Installing and setting up a network cabinet system correctly is essential for maintaining an efficient and organized network infrastructure. In ...

[Request Quote](#)



network performance

The goal of Base Station Transmits is to discuss challenges faced by engineers and technicians who must optimize today's wireless networks. ...

[Request Quote](#)





[How to Properly Install a Network Cabinet PDU](#)

Learn how to install a network cabinet PDU for efficient power distribution, proper cable management, and enhanced equipment safety in your IT setup.

[Request Quote](#)



Understanding the Base Station Subsystem: A Comprehensive ...

In the world of mobile telecommunications, understanding the Base Station Subsystem (BSS) is paramount for grasping how our everyday communications function ...

[Request Quote](#)

Base stations and mobile networks

Base station Mobile network A mobile network is made up of many base stations that each provide coverage in its surrounding area.

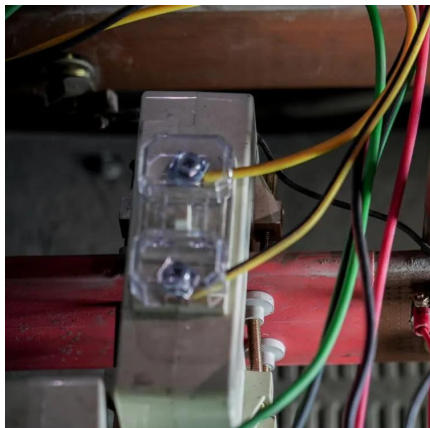
[Request Quote](#)



CommScope , now meets next

Explore CommScope's OCAB cabinet solutions, designed to meet next-generation network demands with innovative features and reliable performance. Download the brochure for details.

[Request Quote](#)



[LLVD & BLVD in Base Station Power Cabinets](#)

It is hoped that this article will help readers fully understand the importance of LLVD and BLVD in base station power cabinets and provide references for practical applications.

[Request Quote](#)



Power Distribution Center

A power distribution center provides a secure enclosure for housing electrical equipment for power distribution, metering, and control. Some of the ...

[Request Quote](#)



Contact Us

For catalog requests, pricing, or partnerships, please visit:
<https://www.espaciovet.es>