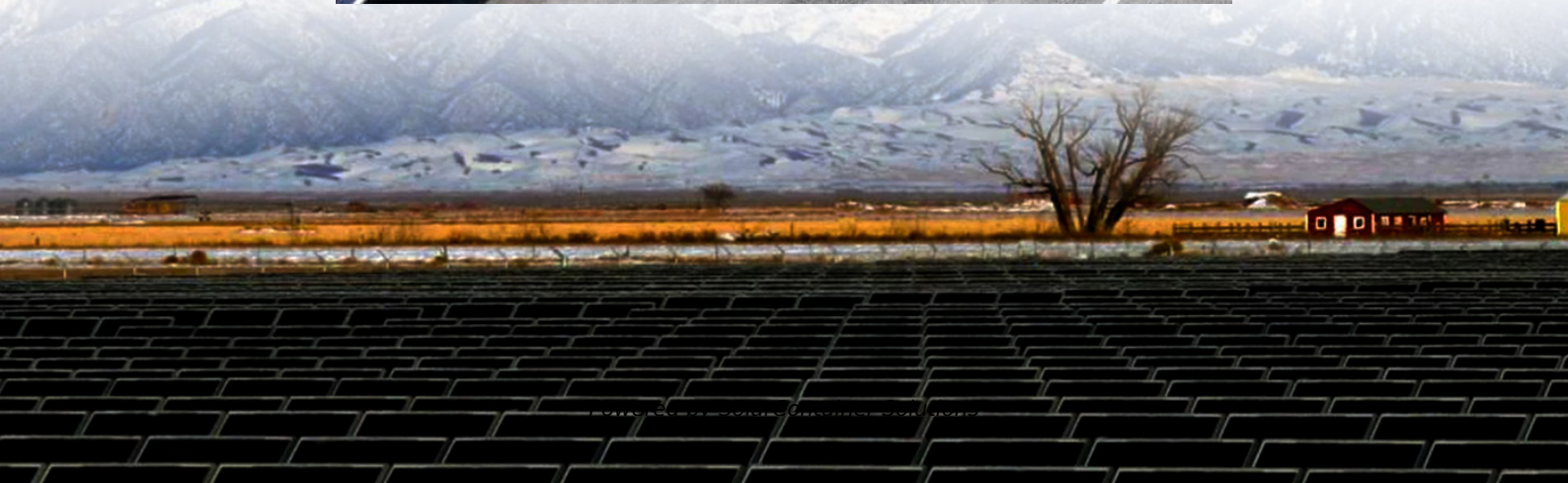


How to connect the power supply battery of the communication base station





Overview

⌘ Insert the batteries the right way round. The polarity is indicated in/on the battery compartment. ⌘ First insert the battery cover at the top a. ⌘ Then press the cover b until it clicks into place. What makes a telecom battery pack compatible with a base station?

Compatibility and Installation Voltage Compatibility: 48V is the standard voltage for telecom base stations, so the battery pack's output voltage must align with base station equipment requirements. Modular Design: A modular structure simplifies installation, maintenance, and scalability.

Which battery is best for telecom base station backup power?

Among various battery technologies, Lithium Iron Phosphate (LiFePO₄) batteries stand out as the ideal choice for telecom base station backup power due to their high safety, long lifespan, and excellent thermal stability.

How do you protect a telecom base station?

Backup power systems in telecom base stations often operate for extended periods, making thermal management critical. Key suggestions include: Cooling System: Install fans or heat sinks inside the battery pack to ensure efficient heat dissipation.

How do I set up a base station?

Set up the base station using either the tripod or T-bar mounting method. You must use an external radio antenna kit for the internal 450 MHz or 900 MHz radio. To avoid interference between the 900 MHz radio and GPRS transmissions, do not mount the external radio antenna within 1 m (3.3 ft) of the GSM antenna.

How do I set up a base station antenna?

Select a control point for the Base Position (the control point name will be used as the base station name) or select unknown position and enter the Base



name. Select the Radio channel to transmit on, if required, and the base station Antenna type. Set the Antenna height and Correction type and then tap Accept to finish the setup.

Why is backup power important in a 5G base station?

With the rapid expansion of 5G networks and the continuous upgrade of global communication infrastructure, the reliability and stability of telecom base stations have become critical. As the core nodes of communication networks, the performance of a base station's backup power system directly impacts network continuity and service quality.



How to connect the power supply battery of the communication bas



[Telecom Base Station Materials: A 3D Walkthrough](#)

Hello! For those who need a quick understanding of what it takes to build a base station, we made this demo using 3D software. Hope you like it!

[Request Quote](#)

[Communication base station energy storage battery ...](#)

The communication base station backup power supply has a huge demand for energy storage batteries, which is in line with the characteristics of large-scale use of the battery by the ladder, ...

[Request Quote](#)



[Optimizing the power supply design for ...](#)

The design of the power supply system of the communication base station is critical to ensure the stable operation of the equipment.

[Request Quote](#)



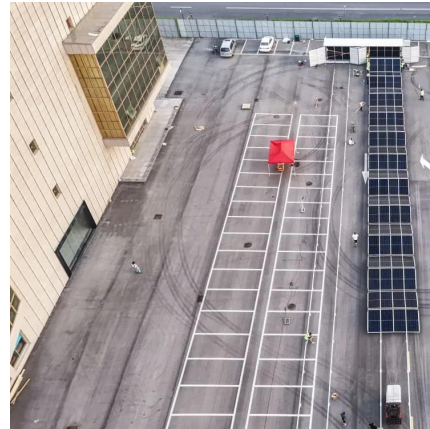
Intelligent Battery Station

aining battery power first. For example, if there are four TB60 batteries plugged into the Battery Station (the first two batteries have 10%



remaining battery power and the second ...

[Request Quote](#)



Power Supply Solutions for Wireless Base Stations Applications

For this reason, battery backups and generators are installed in a wireless base station's power supply system to allow continuous operation under all circumstances.

[Request Quote](#)



Dispatching strategy of base station backup power supply ...

capacity energy storage is proposed. The scheduling strategy reserve battery is considered when the communication traffic changes, and base station backup battery model participating in ...

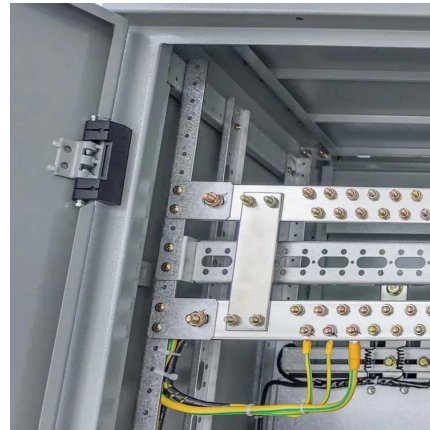
[Request Quote](#)



How to convert a mobile radio to a home base station? : r/gmrs

You can connect to the radio to a battery, then use a battery charger or solar panel (during the day of course) to charge it back up. This allows for use even when the power is out.

[Request Quote](#)



Telecom Base Station Backup Power Solution: Design Guide for ...

Discover the 48V 100Ah LiFePO4 battery pack for telecom base stations: safe, long-lasting, and eco-friendly. Optimize reliability with our design guide.

[Request Quote](#)

Optimal configuration of 5G base station energy storage ...

A multi-base station cooperative system composed of 5G acer stations was considered as the research object, and the outer goal was to maximize the net profit over the ...

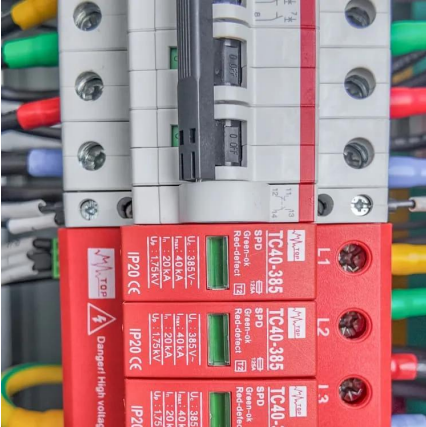
[Request Quote](#)



Selection and maintenance of battery for communication base ...

Focused on the engineering applications of batteries in the communication stations, this paper introduces the selections, installations and maintenances of batteries for communication ...

[Request Quote](#)



Wyze Base Station Setup Guide

To set up your Wyze Base Station: Connect your mobile device to the same Wi-Fi network your base station will be set up to. In the Wyze app, ...

[Request Quote](#)



(PDF) Dispatching strategy of base station backup power supply

In this article, the schedulable capacity of the battery at each time is determined according to the dynamic communication flow, and the scheduling strategy of the standby ...

[Request Quote](#)

Selection and maintenance of battery for communication base station

Focused on the engineering applications of batteries in the communication stations, this paper introduces the selections, installations and maintenances of batteries for communication ...

[Request Quote](#)





Common ways to set up a base station

The antennas are connected to the receiver by high quality RF cables. The receiver is connected to a permanent power supply (mains or generator power). The internal battery of the receiver ...

[Request Quote](#)

Communication Base Station Energy Solutions

During the day, the solar system powers the base station while storing excess energy in the battery. At night, the energy storage system discharges to supply power to the base station, ...

[Request Quote](#)



Site Energy Revolution: How Solar Energy Systems Reshape Communication

Why Solar Energy for Communication Base Stations? Communication base stations consume significant power daily, especially in remote areas with limited access to ...

[Request Quote](#)

How to connect the energy storage battery of communication ...

To maximize overall benefits for the investors and operators of base station energy storage, we proposed a bi-level optimization model for the operation of the energy

[Request Quote](#)



Communication base station

Communication base stations are one of the core nodes of modern communication networks and require uninterrupted power supply to maintain signal coverage and data transmission. The ...

[Request Quote](#)



[Telecom Base Station Backup Power Solution: Design ...](#)

Discover the 48V 100Ah LiFePO4 battery pack for telecom base stations: safe, long-lasting, and eco-friendly. Optimize reliability with our ...

[Request Quote](#)



[Optimization of Communication Base Station Battery ...](#)

In the communication power supply field, base station interruptions may occur due to sudden natural disasters or unstable power supplies. This ...

[Request Quote](#)

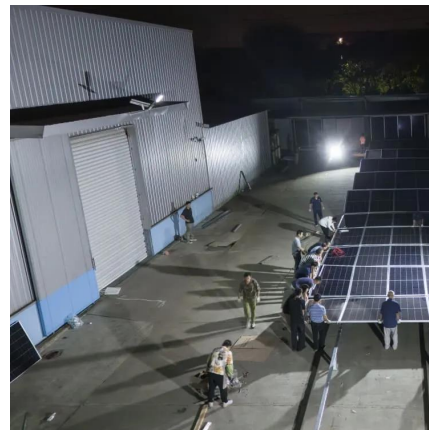




Getting Started in Ham Radio

Safe and Convenient Power for your First Amateur Radio Station There's a lot to learn in the hobby of Amateur Radio but one of the first considerations should be how to power your ...

[Request Quote](#)



Selection and maintenance of batteries for communication base ...

This article focuses on the engineering application of the battery in the power supply system of the communication base station, and focuses on the selection, installation and maintenance of the ...

[Request Quote](#)

Lithium battery is the magic weapon for communication base station

China's communication energy storage market has begun to widely used lithium batteries as energy storage base station batteries, new investment in communication base ...

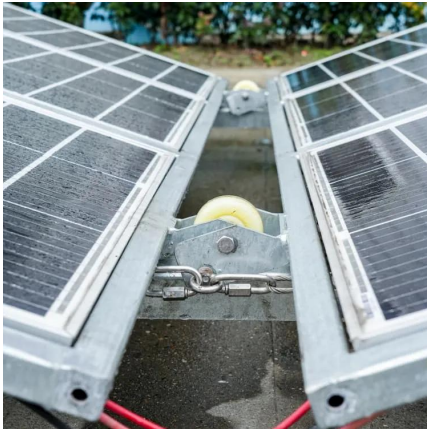
[Request Quote](#)



Communication Base Station Energy Solutions

During the day, the solar system powers the base station while storing excess energy in the battery. At night, the energy storage system discharges to ...

[Request Quote](#)



Gigaset C385

✕ First insert the battery cover at the top a. ✕
Then press the cover b until it clicks into place. If
you need to open the battery cover, for instance
to replace the batteries, place your fingertip in
the ...

[Request Quote](#)



[Battery as a primary power source in a base station setup](#)

You will need to limit both the voltage AND the
current from the power supply to use it as a
charger for the battery, and you will have to
actively monitor the battery's voltage while it ...

[Request Quote](#)



Contact Us

For catalog requests, pricing, or partnerships, please visit:
<https://www.espaciovet.es>