

Inverter wide voltage input





Inverter wide voltage input



Three-Phase Buck-Boost Y-Inverter with Wide DC Input ...

This is an essential feature for fuel-cell applications, which suffer from a wide DC input voltage range. This paper details the operating principle of the Y-inverter, outlines the control system ...

[Request Quote](#)

Single-Phase Inverter With Wide Input Voltageand ...

This paper proposes a single-phase inverter to achieve high power factor, wide input voltage range, and ripple power decoupling without using ...

[Request Quote](#)



Power Inverter, DC to AC Inverter, inverter

80w car power inverter, modified sine wave, DC 12v input to 220V AC output, advanced circuit design, high conversion efficiency up to 90%. Rated power 80w, peak power 160w. Adopting ...

[Request Quote](#)

IS200VTURH1A

Thousands Of Hard To Find Automation Parts In Stock & Ready To Ship. Get A Quote Now! Fast Worldwide Shipping & Competitive Pricing On All



Of The Automation Parts You Need!

[Request Quote](#)



Maximize Efficiency: Benefits of Wide Input Voltage Inverters

Wide input voltage inverters are electronic devices that convert direct current (DC) from renewable energy sources, such as solar panels or batteries, into alternating current (AC) for ...

[Request Quote](#)



[Step-Down \(Buck\) Converters , For All Your Power Needs](#)

Latest Technology to Improve Power Density - Learn more. Designed for Low and High Power Applications - See our portfolio

[Request Quote](#)



An Integrated Single-Stage Buck-Boost Asymmetric Inverter Under Wide

This article proposes an integrated single-stage buck-boost asymmetric inverter, which improves the circuit performance to cope with input voltage fluctuating over a wide ...

[Request Quote](#)

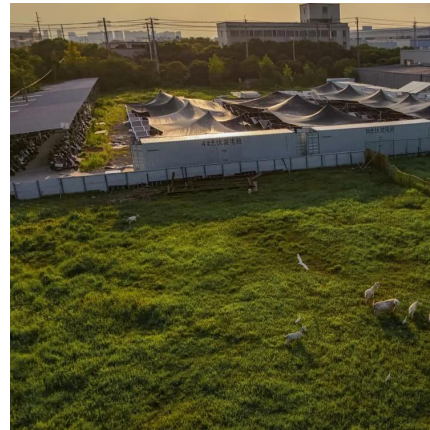




[Wide Input Voltage Inverter Configurations , ERA](#)

Wide Input Voltage Inverter Configurations and Control Systems for Renewable Energy Resources Author / Creator Mehrabi Gohari, Zohre Nowadays, among renewable energy ...

[Request Quote](#)



[Automotive 40-V to 1-kV Input Flyback Reference Design ...](#)

Description This power supply reference design for automotive auxiliary circuits generates a 15-V, 4-A output from a wide input range of 40 V to 1 kV and up to a 1.2-kV transient. The design fits ...

[Request Quote](#)

DC-AC Inverters

Pure Sine Wave Inverters convert a wide range of DC input voltages (27VDC to 80VDC) to regulated 120/240VAC. Zahn inverters employ 4 quadrant, crystal ...

[Request Quote](#)



[Three-Phase Buck-Boost Y-Inverter with Wide DC Input ...](#)

Fig. 1: In (a) a typical 10kW fuel-cell (FC) application is depicted. The oxygen needed for the FC operation is provided by a high- speed compressor controlled by a FC attached motor drive. In ...

[Request Quote](#)



EPC9186: 150 ARMS, wide input voltage 3-Phase BLDC Motor Drive Inverter

Use the EPC9186 3-Phase BLDC motor drive inverter reference design for high-power eMobility, industrial vehicles, and drones

[Request Quote](#)



[A Wide Input Five-Level Inverter With Hybrid PWM-SPWM ...](#)

The working principle, modulation strategy, and power loss of the proposed inverter are analyzed in detail. The experimental results verify the feasibility of the theoretical analysis ...

[Request Quote](#)

DC-AC Inverters

Pure Sine Wave Inverters convert a wide range of DC input voltages (27VDC to 80VDC) to regulated 120/240VAC. Zahn inverters employ 4 quadrant, crystal controlled, Full H-Bridge, ...

[Request Quote](#)





An interleaved buck-boost inverter with wide input-voltage and voltage

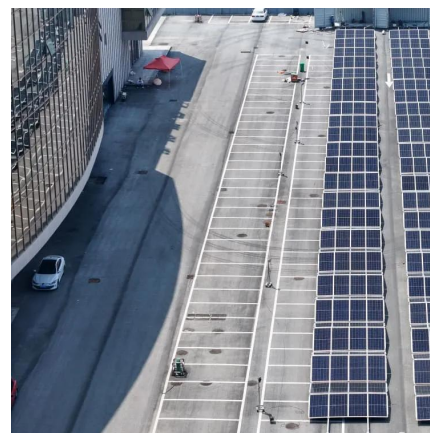
To integrate it with the utility grid, the voltage must be stepped up and converted to AC. This paper proposes an interleaved buck-boost inverter with wide input-voltage and ...

[Request Quote](#)

A Soft-Switching Current-Fed Resonant Inverter for HFAC EV ...

This article studies the method of realizing zero-voltage switching (ZVS) by adding bypass auxiliary capacitors, proposes an improved CLCL resonant inverter, and optimizes the ...

[Request Quote](#)



High voltage DC-AC sine wave inverters accept wide input ...

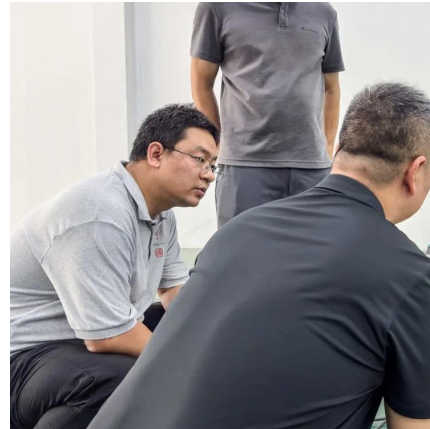
The high input voltage DC-AC sine wave inverters are designed for industrial applications that require clean sine wave AC-output voltage. They are suitable for operation in industrial ...

[Request Quote](#)

How to Choose a Wide Input Voltage Range Three Phase String Inverter?

A wide input voltage range inverter allows for greater flexibility in system design and is suitable for various types of solar installations. By accommodating diverse voltage inputs, it can effectively ...

[Request Quote](#)



[Developing an Efficient Power Supply for Extremely ...](#)

This article highlights Texas Instrument method for designing an efficient ultra-wide input power supply and gives some practical tips for ...

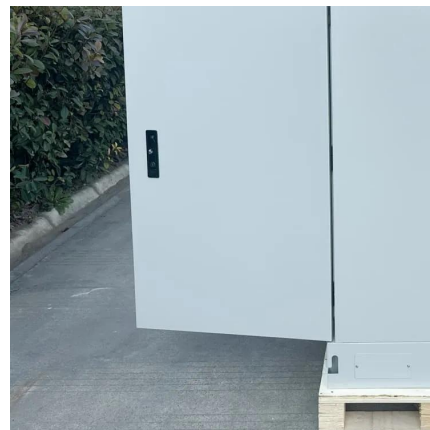
[Request Quote](#)



[Design of wide input voltage range high step-up DC-DC ...](#)

Due to the battery voltage to state-of-charge characteristic, a UPS front end converter must be able to perform power conversion at wide input voltage range to reliably supply the inverter dc ...

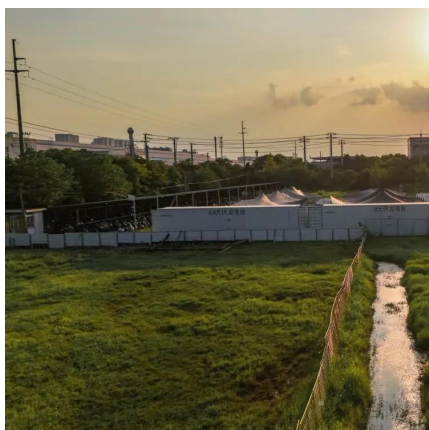
[Request Quote](#)



DC-AC inverters with wide input range and three input voltages ...

The inverters offer a wide operating input range of 20-60Vdc, which allows operation from 24Vdc, 36Vdc and 48Vdc input sources in a single unit. Since the inverter works on all three input ...

[Request Quote](#)

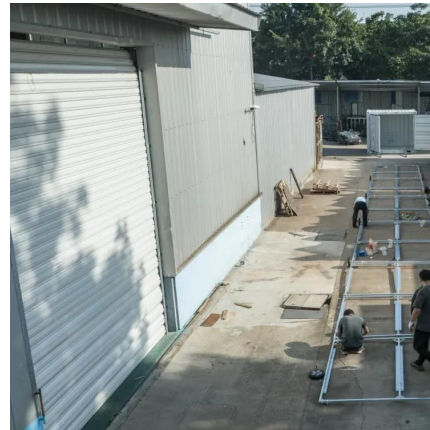




[How to Read Solar Inverter Specifications](#)

Solar inverter specifications include input and output specs highlighting voltage, power, efficiency, protection, and safety features.

[Request Quote](#)



[\(PDF\) Single-Phase Inverter With Wide Input Voltage and Power](#)

(DOI: 10.1109/ACCESS.2019.2895350) This paper proposes a single-phase inverter to achieve high power factor, wide input voltage range, and ripple power decoupling without using large ...

[Request Quote](#)

[AC Input Voltage Range - Sigineer Power](#)

In order to make the inverter accept dirty power from a generator, when the SW2 is switched to position "1", the inverter will bypass an AC input with a higher voltage (164-264Vac ...

[Request Quote](#)



[DC/AV Inverters · DC/AC Pure Sine Wave Inverters · Schaefer](#)

Schaefer's broad range of dc-ac pure sine wave inverters, with power ratings from 700W to 45KVA (Parallel for higher output power), feature rugged designs and high reliability while ...

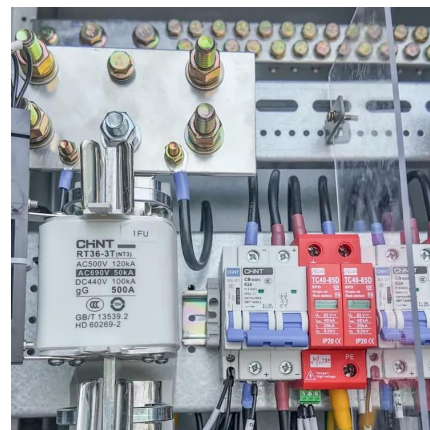
[Request Quote](#)



Single-Phase Inverter With Wide Input Voltage and Power Decoupling

This paper proposes a single-phase inverter to achieve high power factor, wide input voltage range, and ripple power decoupling without using large passive components. The proposed ...

[Request Quote](#)



Contact Us

For catalog requests, pricing, or partnerships, please visit:
<https://www.espaciovet.es>