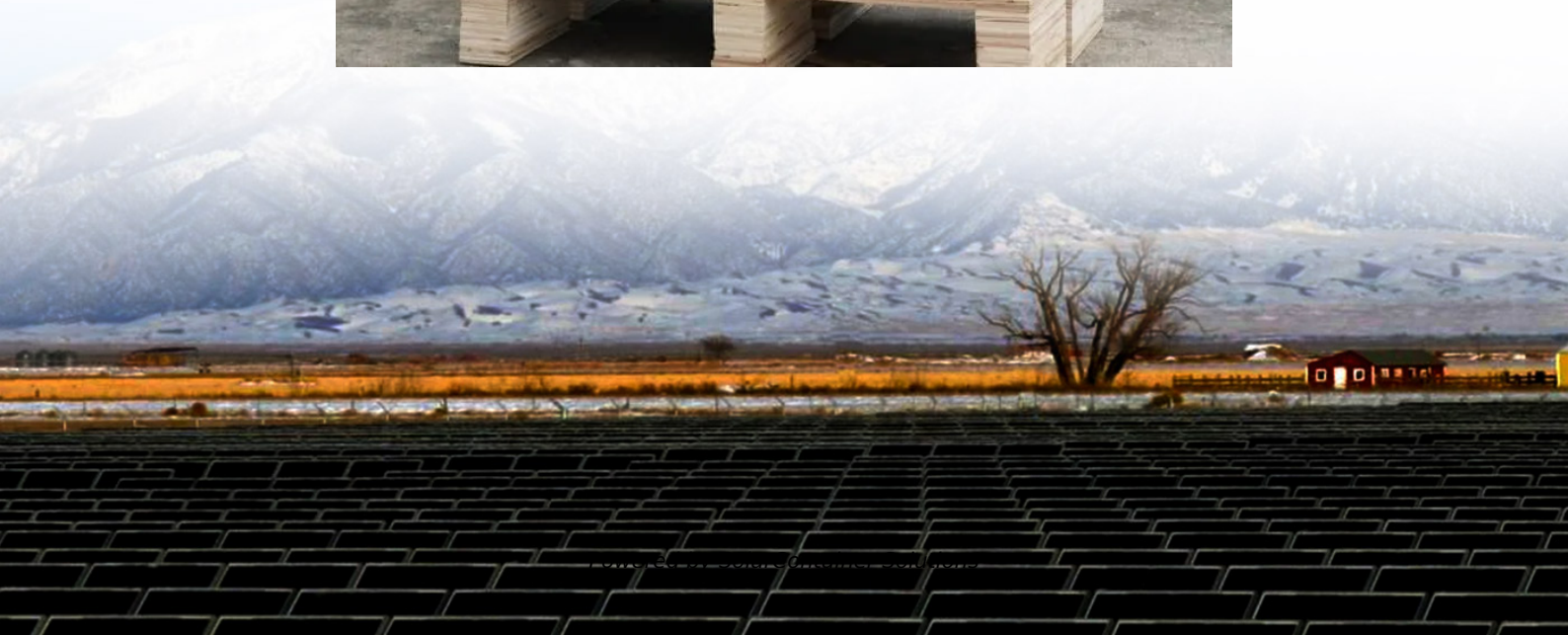


Is there any protection for low inverter voltage





Overview

Many inverters have built-in low voltage protection that triggers shutdowns when the supply voltage drops below a preset threshold. Do inverters need protection?

Without proper protection, an inverter can be damaged by power surges, voltage spikes, and other electrical disturbances. There are several types of protection that can be used to protect inverters: Surge protection: This type of protection is designed to protect the inverter from power surges and voltage spikes.

What are the different types of inverter protection?

Surge protection: This type of protection is designed to protect the inverter from power surges and voltage spikes. Overload protection: This type of protection is designed to protect the inverter from being overloaded. Under-voltage protection: This type of protection is designed to protect the inverter from low voltage.

Can a victron battery protect be used to control an inverter?

You cannot use a Victron battery protect in the power feed cable to an inverter. You could use it to control a remote disable feature if the inverter has this. The idea of using a low cost low voltage detect module could control the inverter if it has remote enable/disable, or hack into the unit and replace the on/of switch with a relay contact.

Can a low voltage detect module control an inverter?

You could use it to control a remote disable feature if the inverter has this. The idea of using a low cost low voltage detect module could control the inverter if it has remote enable/disable, or hack into the unit and replace the on/of switch with a relay contact. You should have no problem with two 105 Ah batteries overnight.

Why does my inverter keep shutting down at 10 volts?



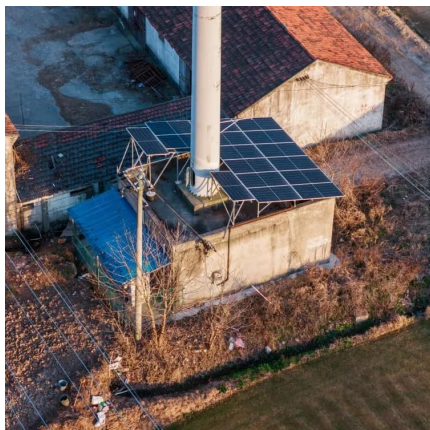
So the voltage may briefly dip below 10 volts for an instant, then spring back up to maybe 11.2 volts. Now if your inverter shuts down at say 10 volts, you might have very frequent shutdowns even with the battery at 11.5 volts. The battery internal resistance is also going to be higher at low states of charge, which makes all this a lot worse.

Does inverter mg give a damn about a battery?

The inverter mgg doesn't give a damn about the battery. That protect voltage is to protect the inverter, not the battery. That is the safest low voltage where there is enough drive voltage to operate the FET outputs without going into the linear region which will destroy FET.



Is there any protection for low inverter voltage



[Diagnosing Low Inverter Voltage and DC Power Loss in ...](#)

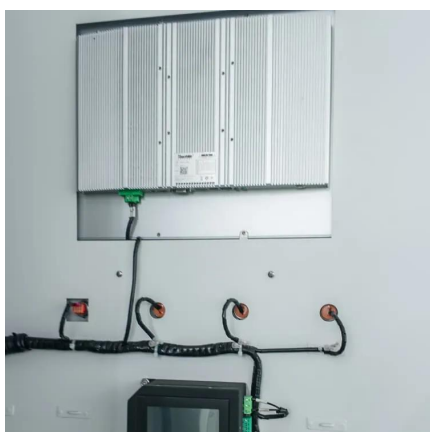
Inverter won't run when not on shore power . Batteries check good, have proper voltage to other 12v circuits, but only 9.6 volts to inverter input. Any help would be appreciated

[Request Quote](#)

[Low Voltage Disconnect Suggestion , DIY Solar Power Forum](#)

There are voltage activated relay devices that can be set to disconnect at a specific voltage. You may need to add a heavy duty relay or contactor to that if your current is higher ...

[Request Quote](#)



Inverter Protection: Why It's Important and How to Ensure Yours

...

Inverter protection is important to ensure the longevity and reliability of the inverter. Without proper protection, an inverter can be damaged by power surges, voltage spikes, and ...

[Request Quote](#)

[Inverter Low Voltage Cutoff--Why SO low?](#)

I want to protect my 2 x 105AH FLA batteries, but have been surprised to see that the low



voltage cutoffs on inverters tends to be at about 9-10 VDC (often with an alarm starting ...

[Request Quote](#)



What is Inverter Protection?

Undervoltage protection prevents the inverter from operating under low voltage conditions. If the DC input voltage drops below the minimum required level, the inverter will shut down to ...

[Request Quote](#)

INVERTERS WITH PROGRAMMABLE LOW VOLTAGE DISCONNECTS PROTECT

Most inverters have a low voltage disconnect (LVD) that are made to protect just the inverter, but Purkeys' inverters can protect the vehicle and the inverter with its programmable LVD. ...

[Request Quote](#)



What is the low

Low - voltage protection helps to prevent these problems by shutting down the inverter when the voltage is too low. This not only protects the inverter but also reduces the ...

[Request Quote](#)



[Finding Under Voltage Protection for Power Tool ...](#)

If I can't use a BMS like that, is there a similar low voltage protection circuit some internet hero could link to that works with an 18v (5s) power tool battery thank ...

[Request Quote](#)



What are the Low Voltage and High Voltage Protection of Inverters?

This article starts from the inverter structure and explains in detail how these protection settings prevent the battery from over discharging or over charging, prolonging the ...

[Request Quote](#)

[SolarEdge Isolation Fault Troubleshooting](#)

Introduction In photovoltaic systems with a transformer-less inverter, the DC is isolated from ground. Modules with defective module isolation, unshielded wires, defective Power ...

[Request Quote](#)



[Prevent Inverters Malfunctions , Tips & Common Issues](#)

What is an inverter, and what does it do? What are the different types of inverters available? What are some common signs of inverter malfunctions? How can I ...

[Request Quote](#)



Battery Discharge Protection

The easiest thing would be that you can program a low voltage cut-off directly at the inverter. Set this to 11V or 11.5V and you should be safe. OR If the inverter have a ...

[Request Quote](#)



9. Inverter Settings

4. To set the voltage at which the inverter restarts after low voltage shut-down. - To prevent rapid fluctuation between shut-down and start up, it is recommended that this value be set at least ...

[Request Quote](#)

Inverter will not produce because of high grid voltage

Inverter will not produce because of high grid voltage. Confirmed by lineman. Said there wasn't anything to be done Any advise?

[Request Quote](#)





[How to Address Inverter Low Voltage Issues for Reliable ...](#)

In this article, we explore practical strategies to address inverter low voltage issues, ensuring reliable and efficient operation in demanding environments. Understanding Inverter ...

[Request Quote](#)

[Inverter Protection: Why It's Important and How to ...](#)

Inverter protection is important to ensure the longevity and reliability of the inverter. Without proper protection, an inverter can be ...

[Request Quote](#)



Voltage Troubles? A Guide to Diagnosing Inverter Low Voltage ...

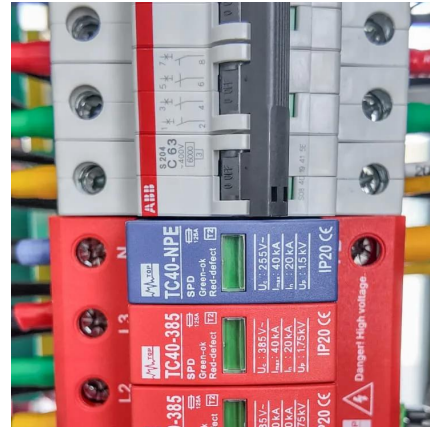
Lastly, double-check all electrical connections and replace any faulty wiring. Properly grounding your inverter is crucial to avoid voltage fluctuations. In conclusion, inverter ...

[Request Quote](#)

[Does Inverter AC Need a Stabilizer? Know The Truth](#)

Daikin inverter ACs usually have a wide voltage range, but if your power supply is unstable, using a stabilizer can add extra protection. Does ...

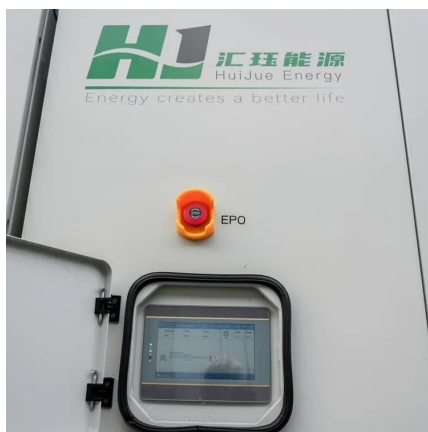
[Request Quote](#)



Help

Help please! I'm looking for an inexpensive inverter with adjustable low voltage cutoff. Does anyone know of one? Needed for testing batteries 12v to 120v ac - 1000w ...

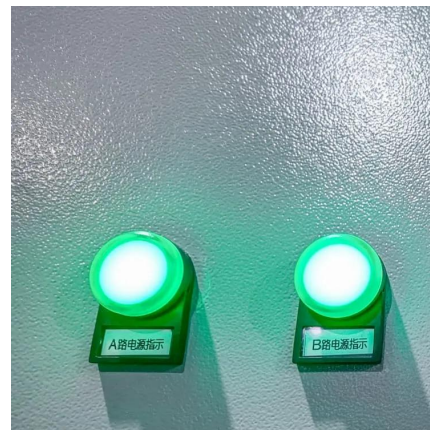
[Request Quote](#)



[How to Address Inverter Low Voltage Issues for ...](#)

In this article, we explore practical strategies to address inverter low voltage issues, ensuring reliable and efficient operation in demanding ...

[Request Quote](#)



[How to Battery Protect against Low Discharge with Inverter](#)

What you can do is set the inverter to switch off on battery voltage and SOC. Set your system to shut off around 10% SOC min to allow for cell imbalances at lower soc. The ...

[Request Quote](#)





PV Isolation Protection: Key Causes, Troubleshooting, and ...

Understanding PV Isolation Protection (PV ISO-PR) "PV ISO-PR" alerts typically indicate low insulation resistance between PV strings and ground, causing the inverter to disconnect from ...

[Request Quote](#)



[Do Inverters Turn Off When Voltage is too low?](#)

If the inverter has a simple mechanical on/off switch you can use a battery protect and a solid state relay. For the bottom of the barrel inverters that don't have a simple ...

[Request Quote](#)

[Low Battery and Overload Protection Circuit for Inverters](#)

A very simple low battery cut-off and overload protection circuit has been explained here. The figure shows a very simple circuit set up which performs the function of an ...

[Request Quote](#)



[12V Inverter Low Voltage Cutoff : r/diySolar](#)

You can get what they call a voltage controlled relay. But you may want to connect it up to an alarm so you know the battery is getting low and to turn things off.

[Request Quote](#)



[Inverter Keeps Shutting Off? Here's How to Change ...](#)

The low voltage disconnect feature is built into your inverter as a safeguard mechanism. It keeps an eye on your battery's voltage levels and will shut it off ...

[Request Quote](#)



[Low Battery and Overload Protection Circuit for Inverters](#)

A very simple low battery cut-off and overload protection circuit has been explained here. The figure shows a very simple circuit set up which ...

[Request Quote](#)

[How does an Inverter Off Grid 8kw protect against under](#)

And trust me, under - voltage can cause some serious problems for your electrical equipment. It can lead to reduced efficiency, overheating, and even permanent damage. So, how does an ...

[Request Quote](#)





Contact Us

For catalog requests, pricing, or partnerships, please visit:
<https://www.espaciovet.es>