

Lebanon distribution box 5g base station





Overview

What is a 5G base station?

Base Station Base Station (BS) is a key component of the 5G Radio Access Network (RAN) architecture that serves as an access point for wireless connections between user equipment (UE) and the network. It consists of a radio unit and an antenna system that transmits and receives signals to and from the UE.

What is a 5G ran control unit?

Control Unit (CU) The Central Unit (CU) efficiently orchestrates network resources and manages base stations, playing a critical role in enhancing 5G RAN performance and adaptability. One of the key functions of the CU is to establish and release connections between user equipment and the network.

What are 5G ran components?

The 5G Radio Access Network (RAN) components are key elements that enable high-speed, low-latency wireless communication. These components include the Radio Frequency (RF) Front End, the Digital Signal Processor (DSP), and the Antenna System. 5G RAN Components Lists: 1. Distributed Unit (DU).

What is 5G ran architecture?

One of the key components of 5G is the Radio Access Network (RAN) architecture, which is responsible for managing the wireless connections between devices and the network. This article will provide a technical overview of the 5G RAN architecture, including its various nodes and components.

What are 5G ran nodes?

These nodes include the User Equipment (UE), the Base Station (BS), the Central Unit (CU), and the Distributed Unit (DU). The 5G RAN architecture also includes several key components, including the Radio Frequency (RF) Front



End, the Digital Signal Processor (DSP), and the Antenna System.

What is BS in 5G ran?

The BS is responsible for establishing, maintaining, and releasing wireless connections to the network, enabling seamless connectivity for the UE. In 5G RAN, BS nodes can also support multiple input, multiple output (MIMO) antennas, increasing the network capacity and data throughput for improved performance.



Lebanon distribution box 5g base station



5g base station

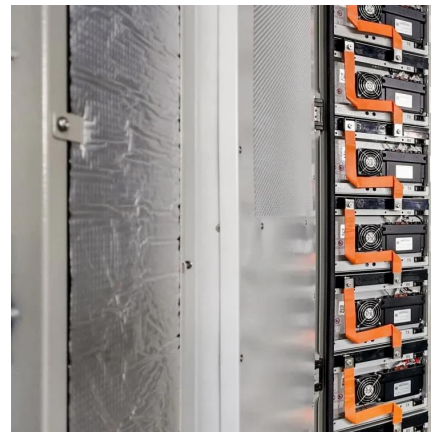
A 5G base station, also known as a 5G cell site or 5G NodeB, is a critical component of a 5G wireless network. It serves as the interface between the mobile devices ...

[Request Quote](#)

[5G RAN Architecture: Nodes And Components](#)

Discover 5G RAN and vRAN architecture, its nodes & components, and how they work together to revolutionize high-speed, low-latency wireless communication.

[Request Quote](#)



Aiming at the engineering problem that 5G base station antenna is difficult to locate efficiently in complex electromagnetic environment, a two-stage positioning method of 5G base station ...

[Request Quote](#)

[North America 5G Base Station Market](#)

North America 5G Base Station Market was valued at US\$ 4,501.44 million in 2022 and is projected to reach US\$ 13,246.30 million by



2030 with a CAGR of 14.4% from 2022 to 2030 ...

[Request Quote](#)



[Hierarchical Optimization Scheduling of Active ...](#)

The innovation is that the game theory is introduced into the multimicrogrid demand response scheduling of 5G base stations. The study ...

[Request Quote](#)



[Huawei Brings state-of-the-art 5G to Lebanon](#)

Globally, Huawei was the first to unveil a full range of end-to-end (E2E) 3GPP-compliant 5G product solutions, covering the core network, the bearer network, base station, ...

[Request Quote](#)



[DBS5900 Distributed Base Stations -- Huawei Enterprise](#)

The DBS5900 is a wireless access device for the eLTE wireless broadband private network solution. It provides wireless access functions, including air interface management, access ...

[Request Quote](#)





5G RAN Architecture: Nodes And Components

5G microwave solution: Fully support the additional backhaul requirements of 5G services, offering simplified, ultra-broadband and intelligent solution in various deployment scenarios.

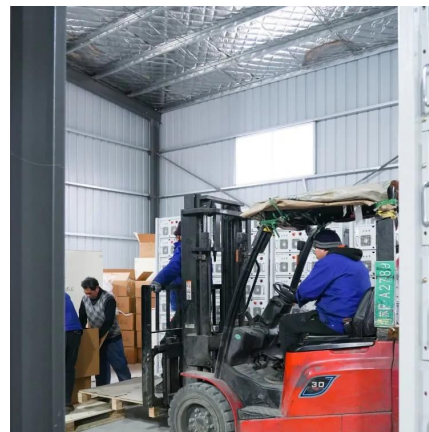
[Request Quote](#)



5G base station rollout in the U.S. and China 2021

The United States (U.S.) and China are both rolling out ** infrastructure at a rapid rate, growing approximately *** times in size from ...

[Request Quote](#)



What is a 5G base station?

A 5G Base Station, also Known as A GNB (Next-Generation NodeB), is a fundamental component of the fifth-generation (5G) Wireless Network Infrastructure. It serves ...

[Request Quote](#)



Distribution network restoration supply method considers 5G base

This paper proposes a distribution network fault emergency power supply recovery strategy based on 5G base station energy storage. This strategy intro...

[Request Quote](#)



5G Technology Is Coming To Lebanon

Small Cells: 4G networks rely on high-power cell towers that transmit signals over long ranges. 5G networks will rely on densely placed ...

[Request Quote](#)

lebanon s first communication base station energy storage

In energy consumption, the peak power of 5G base stations is around 3-4 times that of 4G base stations, which means the demand for electricity has greatly increased.

[Request Quote](#)





[5G In Lebanon: Everything You Need To Know](#)

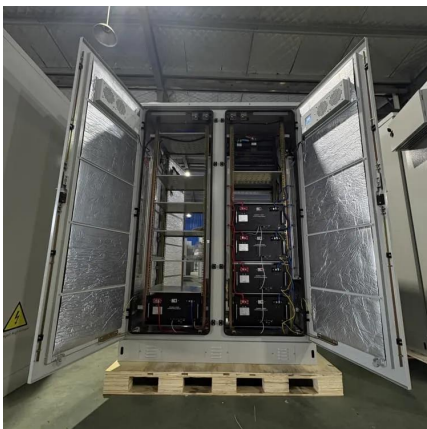
Is it almost ready to be deployed country-wide, or will it still take several years for people living in Lebanon to see the 5G icon on their mobile devices? The answer to these ...

[Request Quote](#)

4G & 5G LTE Base Station

CableFree Emerald 4G & 5G LTE Software Defined Base Stations with advanced features and "stand alone" capability for private networks. Our LTE BS solutions uses latest LTE technology ...

[Request Quote](#)



5G Technology Is Coming To Lebanon

Small Cells: 4G networks rely on high-power cell towers that transmit signals over long ranges. 5G networks will rely on densely placed portable miniature base stations with ...

[Request Quote](#)

[Operator Watch Blog: Lebanon is Deliberating 5G Connectivity](#)

Touch has launched the country's first 5G mobile site, located at its headquarters in downtown Beirut in September 2016. Data speeds of 1.4Gbps were tested at the site, with ...

[Request Quote](#)



[Huawei Brings state-of-the-art 5G to Lebanon](#)

Globally, Huawei was the first to unveil a full range of end-to-end (E2E) 3GPP-compliant 5G product solutions, covering the core network, the ...

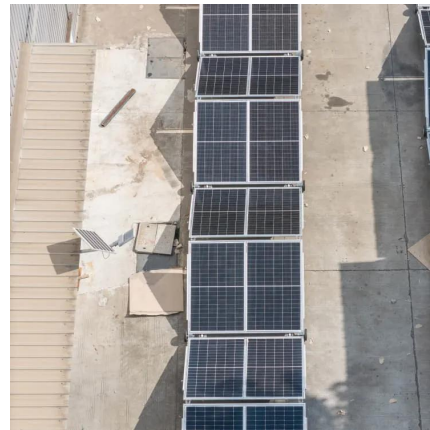
[Request Quote](#)



[Recent Developments in 5G Base Station Engineering - ...](#)

Unleashing the Future: Recent Developments in 5G Base Station Engineering Across Central Europe The modern world is teetering on the brink of digital transformation, ...

[Request Quote](#)



Technical Requirements and Market Prospects of 5G Base Station ...

With the rapid development of 5G communication technology, global telecom operators are actively advancing 5G network construction. As a core component supporting ...

[Request Quote](#)



Middle East And Africa 5G Communication Base Station Body ...

...

What trends are you currently observing in the Middle East And Africa 5G Communication Base Station Body Market sector, and how is your business adapting to them?

[Request Quote](#)



[Operator Watch Blog: Lebanon is Deliberating 5G ...](#)

Touch has launched the country's first 5G mobile site, located at its headquarters in downtown Beirut in September 2016. Data speeds of 1.4Gbps ...

[Request Quote](#)

5G is on, bringing the most advanced 5G solutions to Lebanon

5G microwave solution: Fully support the additional backhaul requirements of 5G services, offering simplified, ultra-broadband and intelligent solution in various deployment scenarios.

[Request Quote](#)



A study on the ambient electromagnetic radiation level of 5G base

The results show that the factors that have significant impacts on the environmental radiation power density of 5G base stations including transmission distance, ...

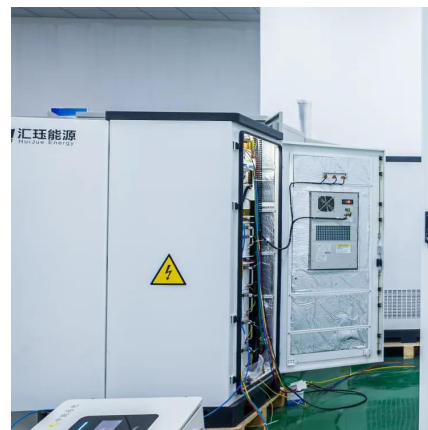
[Request Quote](#)



5G Base Station - WiSig Networks

Network in a Box (NIB) is concept that supports a ready-in minutes portable 5G SA network solution. All the hardware and software required to support 5G ...

[Request Quote](#)



Contact Us

For catalog requests, pricing, or partnerships, please visit:
<https://www.espaciovet.es>