

# Lithium battery pack charge capacity





## Overview

---

What is a lithium-ion battery pack?

Lithium-ion batteries, particularly the 18650 battery pack design, have become the industry standard for many applications due to their high energy density and long lifespan. Understanding how to calculate a lithium-ion battery pack's capacity and runtime is essential for ensuring optimal performance and efficiency in devices and systems.

How should a lithium battery pack be charged?

It is recommended that lithium battery packs be charged at well-ventilated room temperature or according to the manufacturer's recommendations. Avoid exposing the battery to extreme temperatures when charging, as this can affect its performance and life.

How do I calculate the capacity of a lithium-ion battery pack?

To calculate the capacity of a lithium-ion battery pack, follow these steps:  
Determine the Capacity of Individual Cells: Each 18650 cell has a specific capacity, usually between 2,500mAh (2.5Ah) and 3,500mAh (3.5Ah). Identify the Parallel Configuration: Count the number of cells connected in parallel.

What is a 12V lithium battery pack?

Most commonly, a 12V lithium battery pack is made up of four lithium-ion cells, each with a nominal voltage of 3.7V. This configuration allows the pack to reach a total nominal voltage of approximately 14.8V when fully charged and around 12V when discharged.

Which charger should I use for my Li-ion battery pack?

The correct specification charger is critical for optimal performance and safety when charging Li-Ion battery packs. Your charger should match the voltage output and current rating of your specific battery type.



What happens if you undercharge a lithium battery?

On the other hand, undercharging can cause irreversible capacity loss, negatively impacting battery performance and life. Discharging below the minimum voltage threshold of a lithium battery must be avoided to keep the battery healthy and ensure optimal functionality. Using a certified charger to charge lithium battery packs must be considered.



## Lithium battery pack charge capacity

---



### The Main Factors Determine The Capacity Lithium Battery Pack.

Achieving good capacity, state of charge, internal resistance, and self-discharge consistency is essential for maximizing and utilizing the battery pack's capacity. Poor ...

[Request Quote](#)

### [How to Calculate Lithium-Ion Battery Pack Capacity](#)

Learn the simple steps to calculate a lithium-ion battery pack's capacity and runtime accurately in this comprehensive guide.

[Request Quote](#)



### [Optimal Lithium Battery Charging: A Definitive Guide](#)

Charging a lithium battery pack may seem straightforward initially, but it's all in the details. Incorrect charging methods can lead to reduced battery capacity, degraded ...

[Request Quote](#)

## Lithium ion battery capacity

What is the capacity of a lithium ion battery?  
Lithium ion battery capacity is the utmost quantity of energy the battery can store and



discharge as an electric ...

[Request Quote](#)



### [Electric Car Lithium Battery Pack Charge and ...](#)

The Lead-Acid & Lithium Battery Series Charge Discharge Tester DSF40 is integrated with the function of a high-precision capacity series discharging test ...

[Request Quote](#)

### [The Definitive Guide to Highest Capacity Lithium-Ion ...](#)

The Samsung 50E and Panasonic NCR21700A are with the highest capacity, each offering a substantial 5000mAh - renowned for their energy capacity and ...

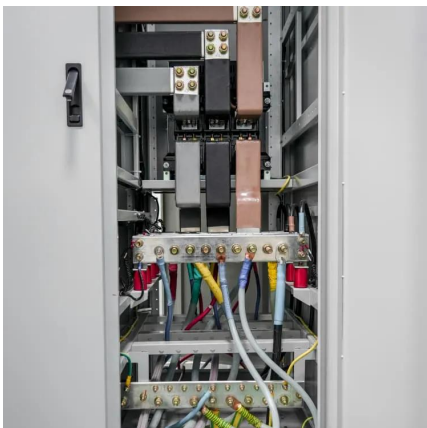
[Request Quote](#)



### [Amazon : Lithium Rechargeable Batteries](#)

Rechargeable AA Batteries Lithium with Charger 8 Pack, 1.5V High Power AA Lithium-ion Battery, 3800mWh High Capacity AA Lithium Batteries, Double A Batteries up to 1600+ Cycle Times ...

[Request Quote](#)







## [Lithium Battery Capacity and Charging ...](#)

Proper management of these factors ensures that your devices operate efficiently and reliably. This article provides insights into calculating ...

[Request Quote](#)



## [Electric Car Battery Life: How Long They Last and ...](#)

The battery packs of electric vehicles are quite resilient, with the lithium-ion type used in most modern EVs capable of lasting at least a decade ...

[Request Quote](#)

## [A Complete Guide to EV Battery \(Size, Weight, Power & more\)](#)

**Battery Capacity** Battery capacity or Energy capacity is the ability of a battery to deliver a certain amount of power over a while. It is measured in kilowatt-hours (product of ...

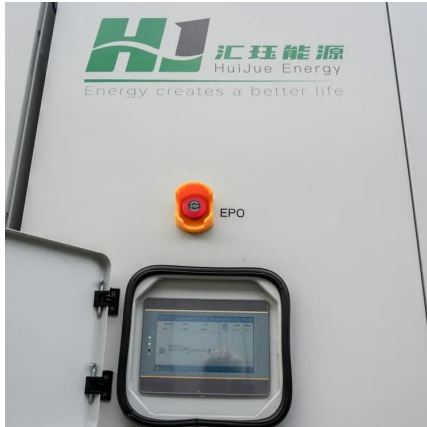
[Request Quote](#)



## [Lithium Battery Pack Selection Guide , ArticleCube](#)

Find the perfect lithium battery pack with our expert guide. Learn about capacity, discharge rates, safety, durability, and compatibility for optimal performance.

[Request Quote](#)



### [TSA battery rules: approved power banks & chargers](#)

All battery packs face very strict guidelines for air travel. Lithium-ion (rechargeable) batteries and portable batteries that contain lithium-ion can ...

[Request Quote](#)



### [The Complete Guide to 8 Best Battery Charger For ...](#)

Lithium batteries are one of the most popular types of batteries on the market today. They are used in a wide variety of devices, from cell phones ...

[Request Quote](#)

### [Battery Pack Calculator , Good Calculators](#)

Here's a useful battery pack calculator for calculating the parameters of battery packs, including lithium-ion batteries. Use it to know the voltage, capacity, energy, and maximum discharge ...

[Request Quote](#)





## [The Right Way to Charge a Lithium Battery Pack](#)

Learn how to charge lithium battery packs properly with step-by-step instructions and safety tips. Maximize lifespan and ensure safe operation.

[Request Quote](#)

## [The Main Factors Determine The Capacity Lithium ...](#)

Achieving good capacity, state of charge, internal resistance, and self-discharge consistency is essential for maximizing and utilizing the battery ...

[Request Quote](#)



## **How to Calculate Lithium-Ion Battery Pack Capacity & Runtime**

Learn the simple steps to calculate a lithium-ion battery pack's capacity and runtime accurately in this comprehensive guide.

[Request Quote](#)

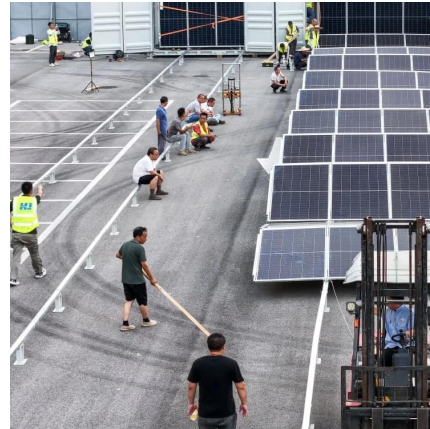


## [Lithium Battery Capacity and Charging Recommendations](#)

Proper management of these factors ensures that your devices operate efficiently and reliably. This article provides insights into calculating capacity, best charging practices, ...

[Request Quote](#)





### **Battery pack calculator : Capacity, C-rating, ampere, charge and**

For a given capacity, C-rate is a measure that indicate at what current a battery is charged and discharged to reach its defined capacity.

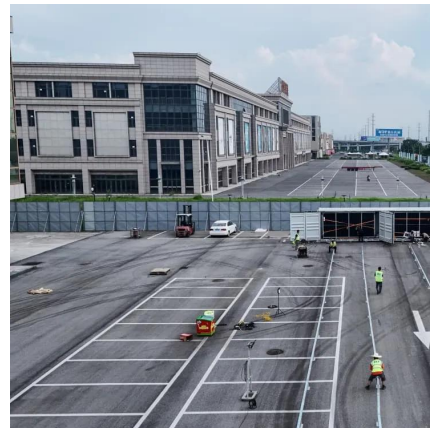
[Request Quote](#)



### [EnerGizer Power Bank 20000mAh Portable Battery ...](#)

TRUSTED CHARGING SOLUTIONS - EnerGizer continues to lead in portable power and wireless charging, offering durable and dependable high ...

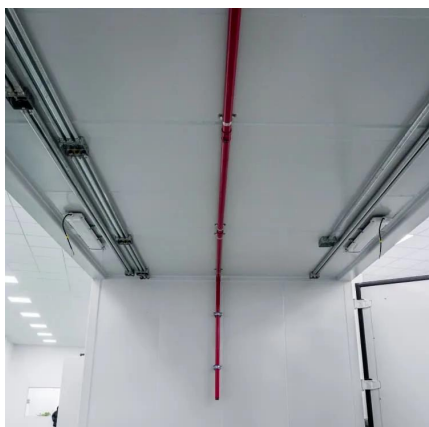
[Request Quote](#)



### [Lithium Battery Packs , BigBattery , Your Source for ...](#)

"I called and asked questions they had great tech help and customer service. I ended up ordering a 48 volt battery pack for my golf cart and water resistant ...

[Request Quote](#)

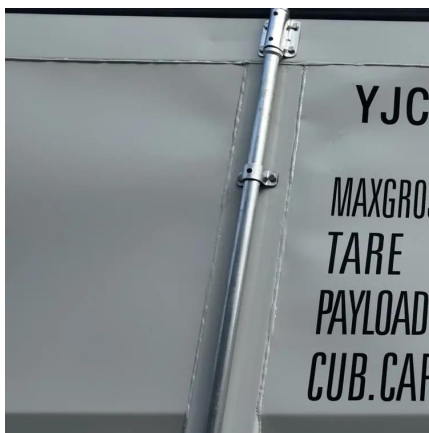




## [Battery Packs Explained: How They Work, Usage, And A ...](#)

Portable chargers, commonly known as power banks, utilize battery packs to recharge devices like smartphones and tablets. Users can easily carry them for on-the-go ...

[Request Quote](#)



## **Lithium ion Battery Pack Calculator**

CMB's professional lithium ion battery calculator tool instantly generates voltage, capacity (kWh), discharge current, and runtime solutions.

[Request Quote](#)

## [Aging mechanism analysis and capacity estimation of lithium](#)

Due to the incompleteness of charging data, the voltage step caused by fast charging conditions and sampling accuracy of the battery management system, the ...

[Request Quote](#)



## [Optimal Lithium Battery Charging: A Definitive Guide](#)

Charging a lithium battery pack may seem straightforward initially, but it's all in the details. Incorrect charging methods can lead to reduced ...

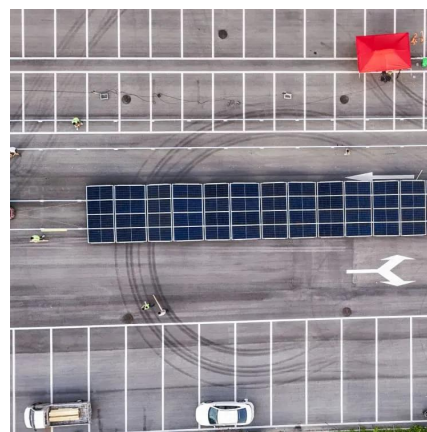
[Request Quote](#)



### [How to Charge a Lithium Battery Pack?](#)

Learn best practices for lithium battery charging. Avoid degradation by keeping charge levels 20-80% and follow essential safety tips.

[Request Quote](#)



### **How Many Cells in a Lithium Battery Pack? A Complete Guide to ...**

Next, we will explore how the number and type of cells influence the battery pack's capacity, efficiency, and longevity, offering insights into the best practices for maintaining and ...

[Request Quote](#)

## **Contact Us**

For catalog requests, pricing, or partnerships, please visit:  
<https://www.espaciovet.es>