

# **Lithium battery pack connected in parallel with a battery**





## Lithium battery pack connected in parallel with a battery

---



### [Demonstrating stability within parallel connection as a ...](#)

Parallel connection of cells is a fundamental configuration within large-scale battery energy storage systems. Here, Li et al. demonstrate ...

[Request Quote](#)

### [How to Put 2 Battery Packs Together?](#)

In this comprehensive guide, I'll explain step-by-step how to properly connect two battery packs in series or parallel to create a safe, higher-performance battery bank for your ...

[Request Quote](#)



### **Charging Lithium Batteries in Parallel: A Comprehensive Guide**

Lithium batteries have become a popular choice for many electronic devices and electric vehicles due to their lightweight, high energy density, and long cycle life. One of the ...

[Request Quote](#)

### [Battery configurations \(series and parallel\) and their ...](#)

Sometimes, battery packs are used in both configurations together to get the desired



voltage and high capacity. This configuration is found in the ...

[Request Quote](#)



## [Charging LiFePO4 Batteries In Parallel And Series Guide](#)

Like other types of battery cells, LiFePO4 (Lithium Iron Phosphate) cells are often connected in parallel and series configurations to meet specific ...

[Request Quote](#)



## [How to Connect Two Batteries in Parallel?](#)

Learn how to connect two batteries in parallel, increase capacity, and avoid common mistakes. Perfect for DIY enthusiasts and tech lovers. Get ...

[Request Quote](#)



## [How to Balance Lithium Batteries with Parallel BMS?](#)

By connecting two or more lithium batteries with the same voltage in parallel, the resulting battery pack retains the same nominal voltage but boasts a higher Ah capacity. For ...

[Request Quote](#)







## [Lithium Series, Parallel and Series and Parallel](#)

Connecting multiple lithium batteries into a string of batteries allows us to build a battery bank with the potential to operate at an increased voltage, or with increased capacity and runtime, or both.

[Request Quote](#)



## [All Things You Need to Know about Lithium Battery ...](#)

It is easily to answer" Why lithium cells need parallel and series?" As we have explained above, Due to the limited voltage and capacity of single cells, in ...

[Request Quote](#)



## [Series and Parallel Configuration of Lithium Battery](#)

Four 18650 Lithium-ion cells of 3400 mAh can connect in series and parallel as shown to get 7.2 V nominal and 12.58 Wh. The slim cell allows ...

[Request Quote](#)



## [Lithium Series, Parallel and Series and Parallel](#)

In this comprehensive guide, I'll explain step-by-step how to properly connect two battery packs in series or parallel to create a safe, higher-performance battery bank for your ...

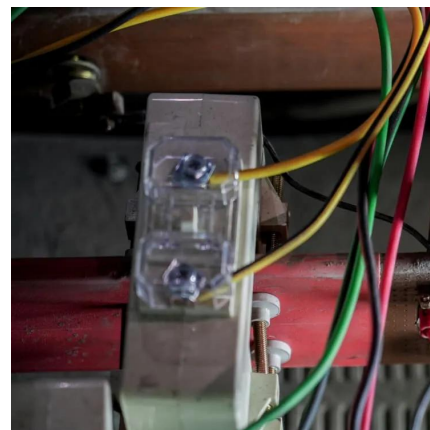
[Request Quote](#)



## [Connecting Lithium Batteries in Parallel](#)

By following the step-by-step guide provided in this article and considering the necessary precautions, you can successfully connect lithium batteries in parallel while ensuring safety ...

[Request Quote](#)



## [LiFePO4 Lithium Batteries in Series VS Parallel Connection](#)

Connecting lithium-ion batteries in parallel or series is more complex than merely linking circuits in series or parallel. Ensuring the safety of both the batteries and the person ...

[Request Quote](#)

## [Can I parallel multiple Lithium Battery Packs?](#)

A lithium battery pack consists of multiple individual lithium cells connected in series and/or parallel to achieve the desired voltage and capacity. When cells are connected in ...

[Request Quote](#)





## [How To Wire Batteries In Series Vs Parallel?BSLBATT](#)

Learn how to wire batteries in series vs parallel to increase voltage or capacity. Understand key differences and choose the right setup for your ...

[Request Quote](#)

## **Definition of Series and Parallel Connection of Lithium Batteries**

Lithium battery pack technique refers to the processing, assembly and packaging of lithium battery pack. The process of assembling lithium cells together is called PACK, which ...

[Request Quote](#)



## [Connecting Lithium Batteries in Parallel](#)

By following the step-by-step guide provided in this article and considering the necessary precautions, you can successfully connect lithium batteries in ...

[Request Quote](#)

## [How to Balance Lithium Batteries in Parallel](#)

Balancing lithium batteries in parallel involves measuring each battery's voltage before connection, ensuring they're within an acceptable range of each other, and then ...

[Request Quote](#)



### [How to Connect Lithium Cells in Series and Parallel?](#)

In a parallel connection, the batteries are linked side-by-side. This configuration keeps the voltage the same but increases the capacity. For ...

[Request Quote](#)



### [Is It Safe to Connect Lithium Batteries in Parallel?](#)

Understanding Parallel Battery Connections  
When connecting lithium batteries in parallel, the primary objective is to increase the overall capacity of the battery system. This ...

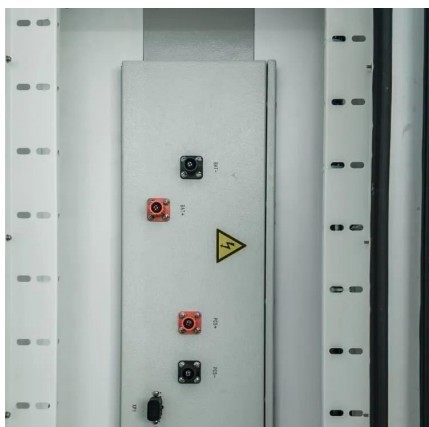
[Request Quote](#)



### [Definition of Series and Parallel Connection of Lithium ...](#)

Lithium battery pack technique refers to the processing, assembly and packaging of lithium battery pack. The process of assembling lithium cells ...

[Request Quote](#)



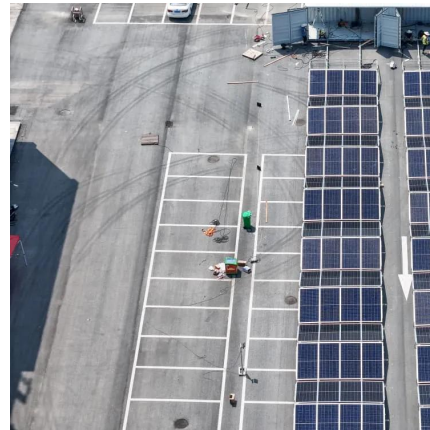




## Lithium Battery Pack

Let's assume I am going to build a Li-ion battery pack with 12 18650s, where I connect four cells together in parallel and then the three sets of four in series. My understanding is that a BMS ...

[Request Quote](#)



## [How to Connect Lithium Cells in Series and Parallel?](#)

In a parallel connection, the batteries are linked side-by-side. This configuration keeps the voltage the same but increases the capacity. For instance, connecting two 3.7V ...

[Request Quote](#)

## [Everything About Lithium Battery Series & Parallel](#)

Learn how to safely connect lithium batteries in series and parallel. Avoid risks, extend battery life and build reliable power systems with ...

[Request Quote](#)



## [Can I parallel multiple Lithium Battery Packs?](#)

The short answer is yes, you can parallel multiple lithium battery packs. However, there are several factors you need to consider to ensure a safe and efficient operation. One of ...

[Request Quote](#)

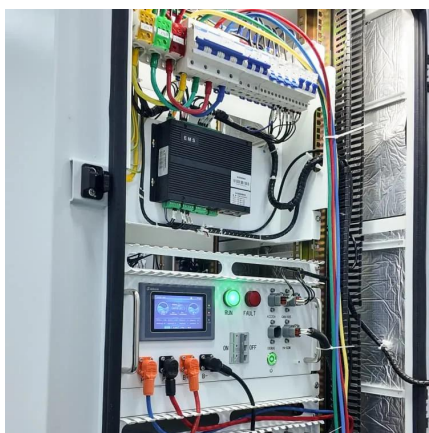
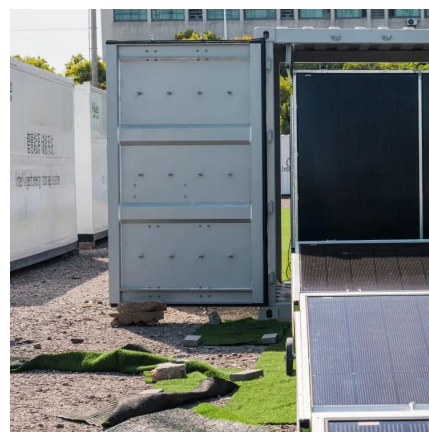




## I have two lithium battery packs with separate BMS, Can I connect ...

I have two lithium battery packs with separate BMS, Can I connect the packs in parallel, will the BMS get damaged or will something happen? 12v 10ah battery pack, I have ...

[Request Quote](#)



## [How to Balance Lithium Batteries with Parallel BMS?](#)

By connecting two or more lithium batteries with the same voltage in parallel, the resulting battery pack retains the same nominal voltage but ...

[Request Quote](#)

## [Cells in Series and Parallel - NPP POWER](#)

The process of assembling lithium cells into a group is called PACK, which can be a single cell or cells in series and parallel lithium battery pack, ...

[Request Quote](#)





### [Is It Safe to Connect Lithium Batteries in Parallel?](#)

Connecting lithium batteries in parallel can significantly enhance the capacity and flexibility of a battery system. However, this configuration comes with its own set of challenges ...

[Request Quote](#)

## Contact Us

---

For catalog requests, pricing, or partnerships, please visit:  
<https://www.espaciovet.es>