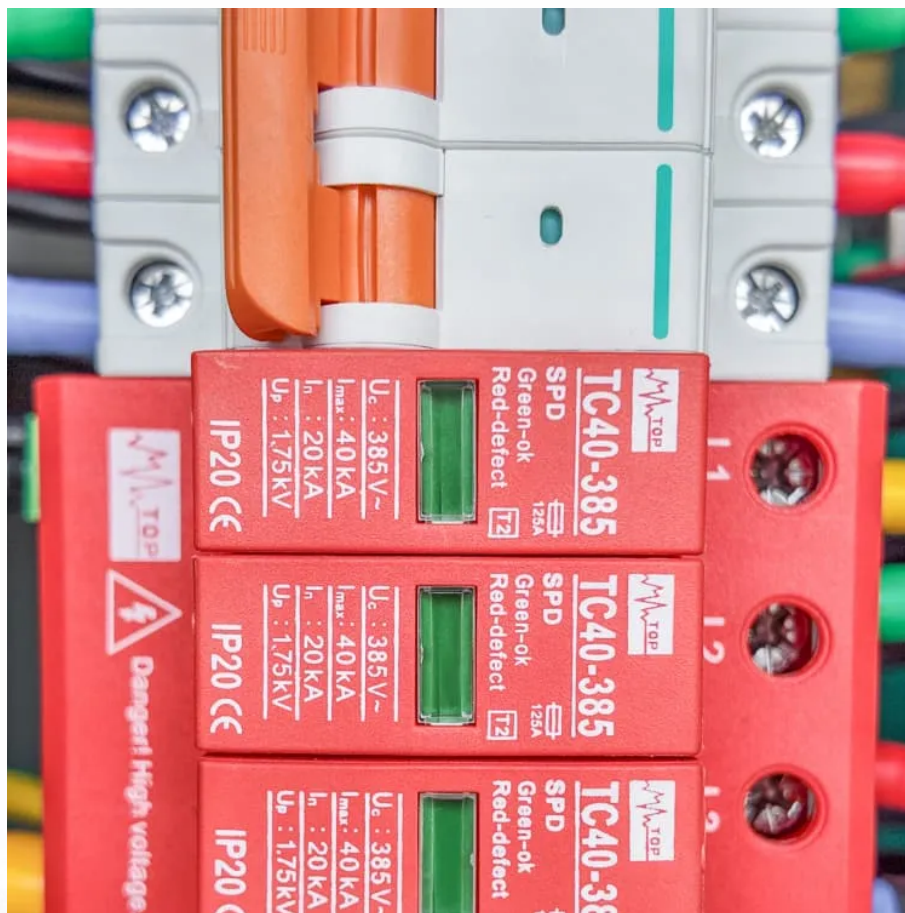


Nordic PV Inverter Specifications





Overview

What is the power range of a Nord control cabinet inverter?

NORD control cabinet inverters have a power range of up to 215 HP and thanks to their wide range of functionality can be perfectly adapted to many customer applications. NORD Frequency Inverters already meet the requirements of energy efficiency classification IE2 of the new Ecodesign directive (EU) 2019/1781 (valid from 1st of July 2021).

What are inverter specifications?

Specifications provide the values of operating parameters for a given inverter. Common specifications are discussed below. Some or all of the specifications usually appear on the inverter data sheet. Maximum AC output power This is the maximum power the inverter can supply to a load on a steady basis at a specified output voltage.

How much power does an inverter need?

It's important to note what this means: In order for an inverter to put out the rated amount of power, it will need to have a power input that exceeds the output. For example, an inverter with a rated output power of 5,000 W and a peak efficiency of 95% requires an input power of 5,263 W to operate at full power.

How do you classify an inverter based on its power output?

Using the CEC efficiency, the input power to the inverter must be $P_{IN} = P_{OUT} / \text{CEC Efficiency} = 3,300 \text{ W} / 0.945 = 3,492 \text{ W}$. Inverters can be classed according to their power output. The following information is not set in stone, but it gives you an idea of the classifications and general power ranges associated with them.

What makes a good inverter?

The ability of an inverter to accurately convert DC to AC, operate within



specified voltage and current limits, and incorporate safety and control features such as MPPT, transfer switches, and ground fault protection ensures optimal energy performance and system longevity.

What are the features of a grid-tie inverter?

Inverter features vary from one model to another and from one manufacturer to another. Common features found on many inverters are as follows.

Weatherproof Enclosure Most inverters, especially grid-tie inverters, are designed to be installed outdoors and have weatherproof enclosures.



Nordic PV Inverter Specifications



SPI3000~6000-B2

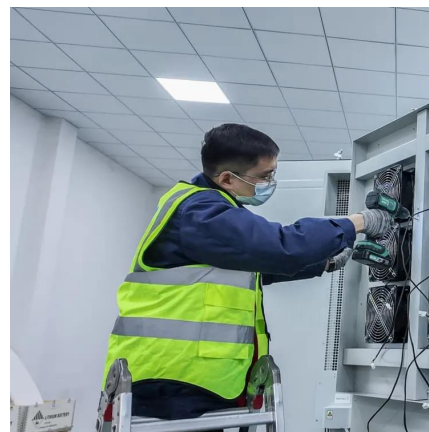
In terms of Green Saving, the inverter has a small size, making it easy to install and use. It also features natural cooling, ensuring low environmental noise, ...

[Request Quote](#)

[How to Read and Understand Solar Inverter ...](#)

Recognizing specifications is key to unlocking the full potential of your solar energy system. A well-chosen inverter ensures not only maximum ...

[Request Quote](#)



[Schneider Inverter Datasheet_US_Schneider Electric](#)

Schneider Electric's datasheet for inverters provides comprehensive information on features, specifications, and applications of ...

[Request Quote](#)



[Inverter Specifications and Data Sheet](#)

The article provides an overview of inverter functions, key specifications, and common features found in inverter systems, along with an



example of power calculations and inverter ...

[Request Quote](#)



[Three-phase ESS Cell technology LiFePO4](#)

System Specification Hybrid Inverter
Specification *Specifications are subject to
change without prior notice.

[Request Quote](#)



Residential , nordic-inverters.It

Our single-phase inverters are designed to
provide reliable and efficient power conversion
for small to medium-sized residential properties.
They are easy to ...

[Request Quote](#)



PV Inverters

The Right Inverter for Every Plant A large number
of PV inverters is available on the market - but
the devices are classified on the basis of three
important characteristics: power, DC-related ...

[Request Quote](#)





Nordic India

Nordic's inverter offering includes single phase and three phase grid connected inverters ranging from 1KW to 100KW, manufactured by Growatt, Solaredge ...

[Request Quote](#)



Hybrid 10KW PV Inverter

1. Introduction This hybrid PV inverter can provide power to connected loads by utilizing PV power, utility power and battery power. Hybrid inverter Battery Load

[Request Quote](#)

Residential , nordic-inverters.It

Our single-phase inverters are designed to provide reliable and efficient power conversion for small to medium-sized residential properties. They are easy to install and use, and come with ...

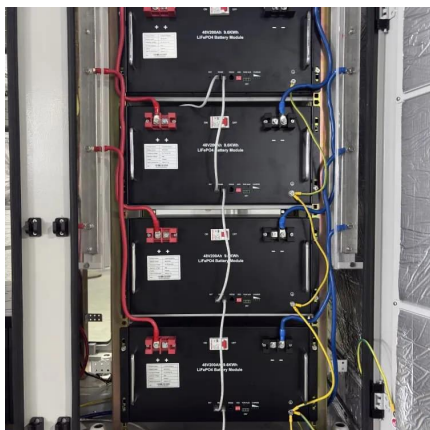
[Request Quote](#)



[Inverter Specifications and Data Sheet](#)

This innovative inverter offers exceptional yield, seamless integration with energy storage systems, robust reliability, and effortless operation and maintenance.

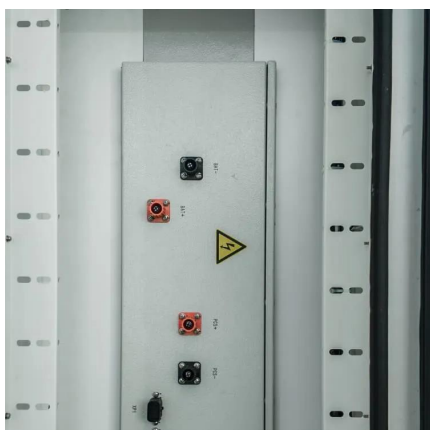
[Request Quote](#)



Explaining Solar Inverter Datasheets: A Technical Walkthrough

Solar inverters come in different sizes, designs, and specifications, and the datasheet provides detailed information about the inverter's performance, features, and ...

[Request Quote](#)



How oversizing your array-to-inverter ratio can improve solar ...

Solectria Renewables, Contributors PV system designers are tasked with the important decision of selecting the optimal array-to-inverter ratio for each inverter in a project. The array-to ...

[Request Quote](#)

[How to read inverter data sheet in 5 easy steps-InkPV](#)

Before you buying an off-grid solar power system, you might have question that don't know how to read the solar inverter data sheet, don't know if the solar ...

[Request Quote](#)





SPI30K~40K-B X2

This innovative inverter offers exceptional yield, seamless integration with energy storage systems, robust reliability, and effortless operation and maintenance.

[Request Quote](#)

Hybrid 5KW PV Inverter

Depending on different power situations, this hybrid inverter is designed to generate continuous power from PV solar modules (solar panels), battery, and the utility. When MPP input voltage ...

[Request Quote](#)



Pure sine wave inverter Selectable input voltage range for ...

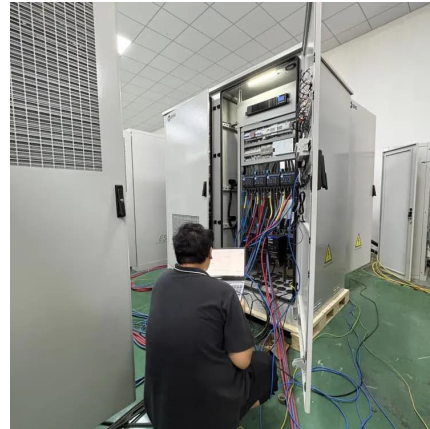
NORDIC 1KVA/2KVA/3KVA/4KVA/5KVA Inverter/Charger Selection Guide Product specifications are subject to change without further notice

[Request Quote](#)

Three-phase On-grid String Inverter

Flexible ESS Equipped with ESS function interface, realized the interconnection of PV and ESS Flexible multi-term investment of PV and ESS project optimizes ROI of users.

[Request Quote](#)



SPI3000~6000-B2

In terms of Green Saving, the inverter has a small size, making it easy to install and use. It also features natural cooling, ensuring low environmental noise, and a super-wide operating ...

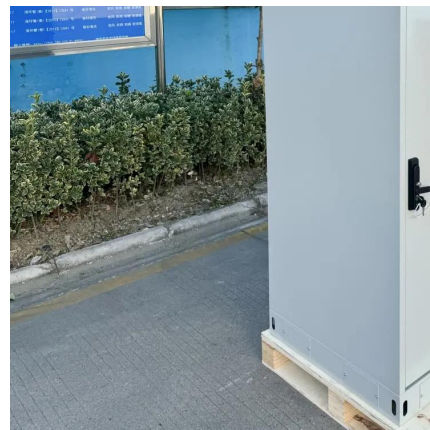
[Request Quote](#)



TECHNICAL SPECIFICATION FOR SOLAR HYBRID ...

It will charge from solar only as long as it is giving sufficient current. When Solar Current is drops to below set point, then sha. chargin.

[Request Quote](#)



SPI30K~40K-B X2

Adaptable ESS Integration: The SPI30K~40K-B X2's ESS function interface enables smooth interconnection between PV and energy storage systems, providing flexibility for multi-term ...

[Request Quote](#)





PV Inverter

The SolarEdge DC-AC PV inverter is specifically designed to work with the SolarEdge power optimizers. Because MPPT and voltage management are handled separately for each module ...

[Request Quote](#)



Home , nordic-inverters.lt

Our advanced energy storage systems are designed to integrate seamlessly with our solar inverters, ensuring optimal performance and reliability. Our storage solutions are available in ...

[Request Quote](#)

Nordic India

The inverters provide for high conversion efficiency of almost 96.5%. Other features include MPPT tracking, transformerless design, input operating voltages between 110V - 450V, IP65 ...

[Request Quote](#)



Contact Us

For catalog requests, pricing, or partnerships, please visit:
<https://www.espaciovet.es>