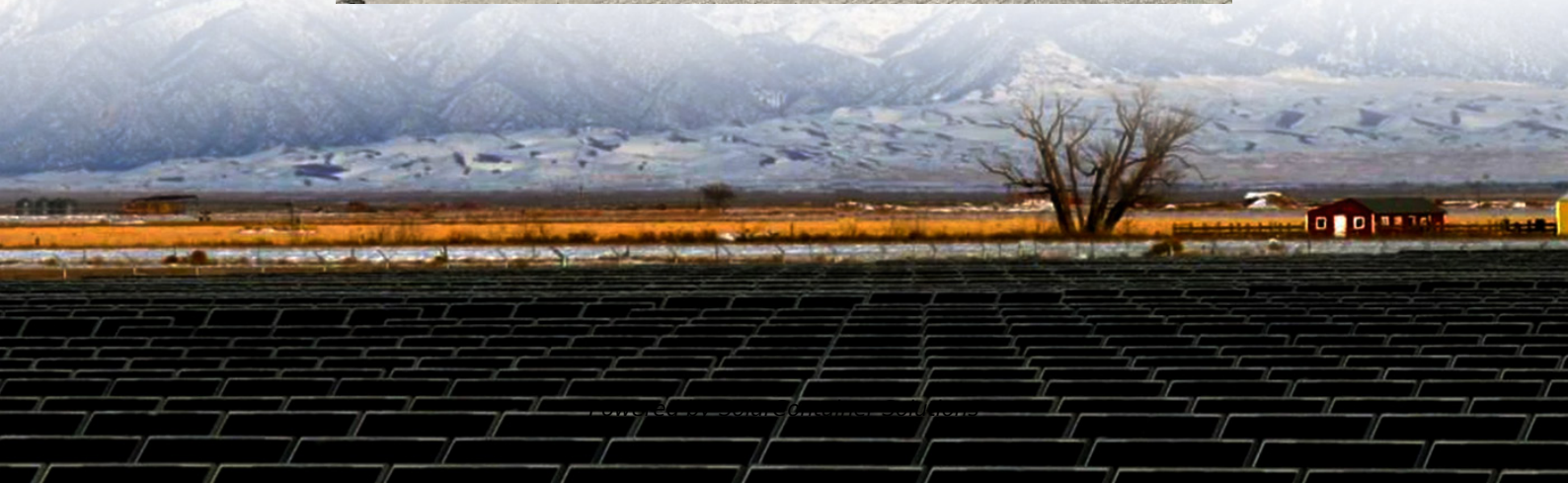


# **Requirements for prefabricated communication green base station room**





## Requirements for prefabricated communication green base station

---



### TELECOMMUNICATIONS NETWORK STANDARDS AND ...

Although the equipment room may incorporate the space requirements of the Building Service Entrance (by increasing the size of the room), it must be designed as a true equipment room in ...

[Request Quote](#)

### **SECTION 16650**

The MDF Room provides space for wall-mounted and freestanding equipment supporting the centrally-administered communications systems, as well as the point-of-presence for ...

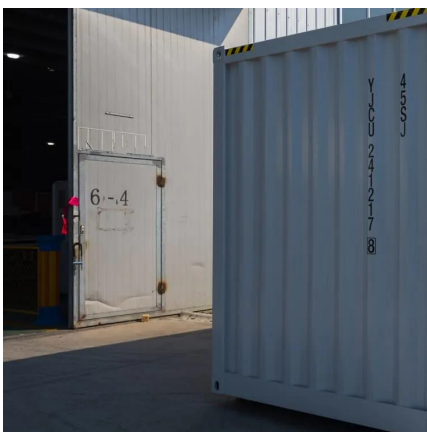
[Request Quote](#)



### The Highest Quality Communication Shelters

Individual modules range from 8'W x 8'L to 13'8"W x 36'L, but multiple modules can be manufactured for larger square foot requirements. Customers may contact us with a design in ...

[Request Quote](#)



### COMMUNICATION SITE BUILDING DESIGN AND ...

This chapter provides requirements and recommendations for designing communications



site buildings, including equipment shelters and outdoor cabinets. The following topics are discussed:

[Request Quote](#)



### [Telecommunication Shelters & Enclosures , Module X ...](#)

Our concrete and steel shelters are engineered with flexibility in the design phase to allow for domestic or international shipments. The ...

[Request Quote](#)



## Shelters

Telecom shelters play a vital role in housing critical communications equipment away from the main switching center, ensuring uninterrupted and efficient ...

[Request Quote](#)



## mobile communication base stations

Moreover, the shift towards green technology is influencing the design and operation of base stations. Companies are increasingly adopting energy-efficient solutions, ...

[Request Quote](#)



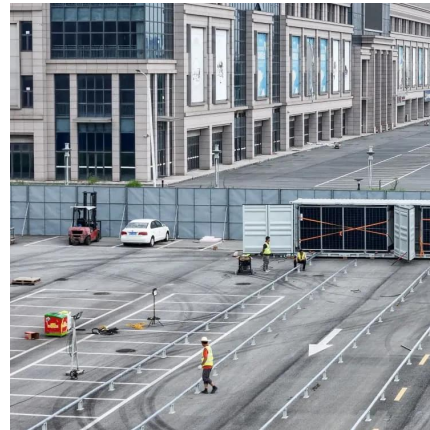




## Communication Facilities Construction Design Standards

The diversified communications options vary from building to building and require a great deal of planning. The team will work with the occupants, contractors, and project managers during the ...

[Request Quote](#)



## The Highest Quality Communication Shelters

Individual modules range from 8'W x 8'L to 13'8"W x 36'L, but multiple modules can be manufactured for larger square foot requirements. Customers may ...

[Request Quote](#)

## Optimizing Telecommunications Spaces : Sizing & Design ...

In modern data centers, the Meet-Me Room (MMR) plays a vital role in ensuring secure, high-performance, and cost-effective interconnections between carriers, ISPs, and enterprise ...

[Request Quote](#)



## **Communications Equipment Buildings**

Whether you require a concrete, brick or sandwich panel constructed Signalling Room, ICS can design and engineer your solution taking into account site ...

[Request Quote](#)



## Telecommunication Shelters & Enclosures , Module X Solutions

Our concrete and steel shelters are engineered with flexibility in the design phase to allow for domestic or international shipments. The shelters can be concrete, steel, or include both steel ...

[Request Quote](#)



## [UFC 4-215-01 Armories and Arms Rooms](#)

It may be a free-standing arms room, constructed of precast concrete or steel plate. The physical security requirements for a modular arms room are the same as for a standard ...

[Request Quote](#)

## 00/00/00 00:00 AM

Mechanical Design Requirements Access to unit substation rooms is limited to authorized personnel, making it difficult for others to perform maintenance inside the room. Avoid locating ...

[Request Quote](#)





## Section 271100

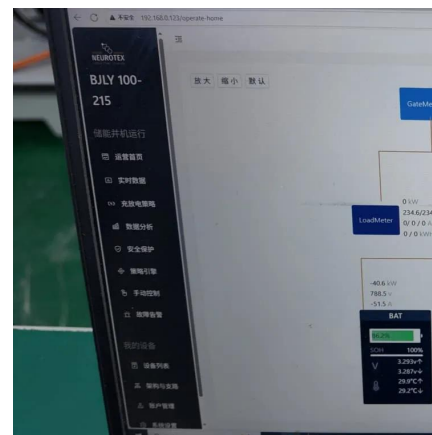
This section will cover all the requirements for physically constructing the room and locating it within the building that it services. In addition it will cover how to configure the room's layout to ...

[Request Quote](#)

## Optimizing Telecommunications Spaces : Sizing

In modern data centers, the Meet-Me Room (MMR) plays a vital role in ensuring secure, high-performance, and cost-effective interconnections between ...

[Request Quote](#)



## Communications Equipment Buildings

Whether you require a concrete, brick or sandwich panel constructed Signalling Room, ICS can design and engineer your solution taking into account site specifications for footprint, floor ...

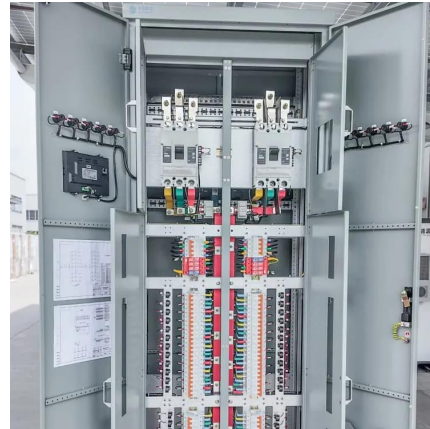
[Request Quote](#)

## WBDG Home , WBDG

Innovative Solutions for the Built Environment  
NIBS is charged by U.S. Congressional authorization to conduct research, establish performance criteria, promote standards adoption, ...

[Request Quote](#)





### [Mobile Base Station , Complete Solution for ...](#)

The Mobile Base Station is a fully transportable, low impact solution that allows quick installation of a Greenfield telecommunications base station. Suitable for ...

[Request Quote](#)



### [Energy storage system of communication base station](#)

Energy storage system of communication base station Base station energy cabinet: floor-standing, used in communication base stations, smart cities, smart transportation, power ...

[Request Quote](#)



### **Telcoms Cabin Prefabrication , Technical Mobile & Modular Building**

Workspace Technology's Technical Prefabricated Telecoms Cabins are bespoke to suit individual client requirements as appropriate for fixed line, mobile, radar or other transmission applications.

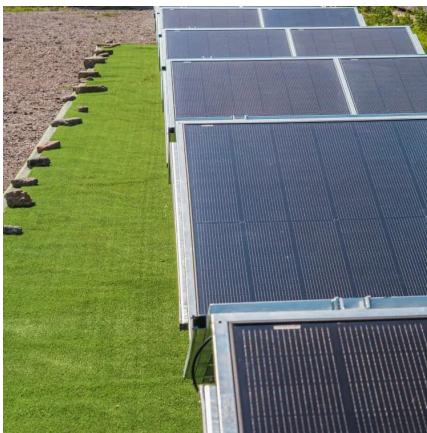
[Request Quote](#)



## [Communications Room and Communications Closet ...](#)

A typical communications closet arrangement would be 10 ft wide allowing for 30-in deep equipment, 36-in working space on both sides, 3â€™,4-in ...

[Request Quote](#)



## [Specifications, Guidelines & Practices](#)

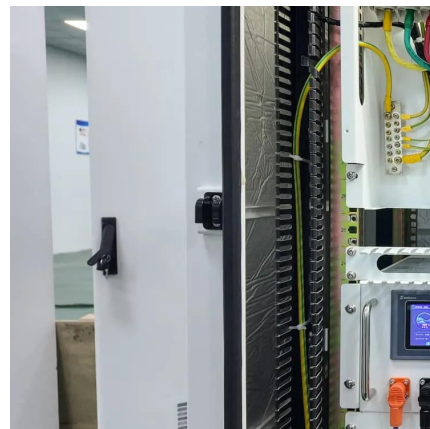
1.1 This statement of work and specifications are for shelter (s) to be supplied to Ericsson Inc. Private Radio Systems. The shelter shall be a prefabricated concrete communication type as ...

[Request Quote](#)

## [Communication Room Design , Designing Space for ...](#)

Communication room design considers current and future data needs. Learn how ANSI/TIA-569-D guidelines help ensure optimal space ...

[Request Quote](#)



## [Communication Shelters - Landa Mobile Systems](#)

Additionally, door panel assemblies are evaluated for electrical requirements and listed under UL file E46140, with the UL mark affixed to the door assemblies. ...

[Request Quote](#)





### [Telcoms Cabin Prefabrication , Technical Mobile](#)

Workspace Technology's Technical Prefabricated Telecoms Cabins are bespoke to suit individual client requirements as appropriate for fixed line, mobile, radar ...

[Request Quote](#)



### [Telcoms Cabin Prefabrication , Technical Mobile](#)

Prefabricated Telecoms Cabins to support a wide range of fixed-line and mobile applications including Fibre Optic Repeater Cabins, 5G Base Stations, and more.

[Request Quote](#)



### **Mobile base station**

A mobile base station, also called a base transceiver station (BTS), is a fixed radio transceiver in any mobile communication network or wide area network (WAN). The base station connects ...

[Request Quote](#)





## Contact Us

---

For catalog requests, pricing, or partnerships, please visit:  
<https://www.espaciovet.es>