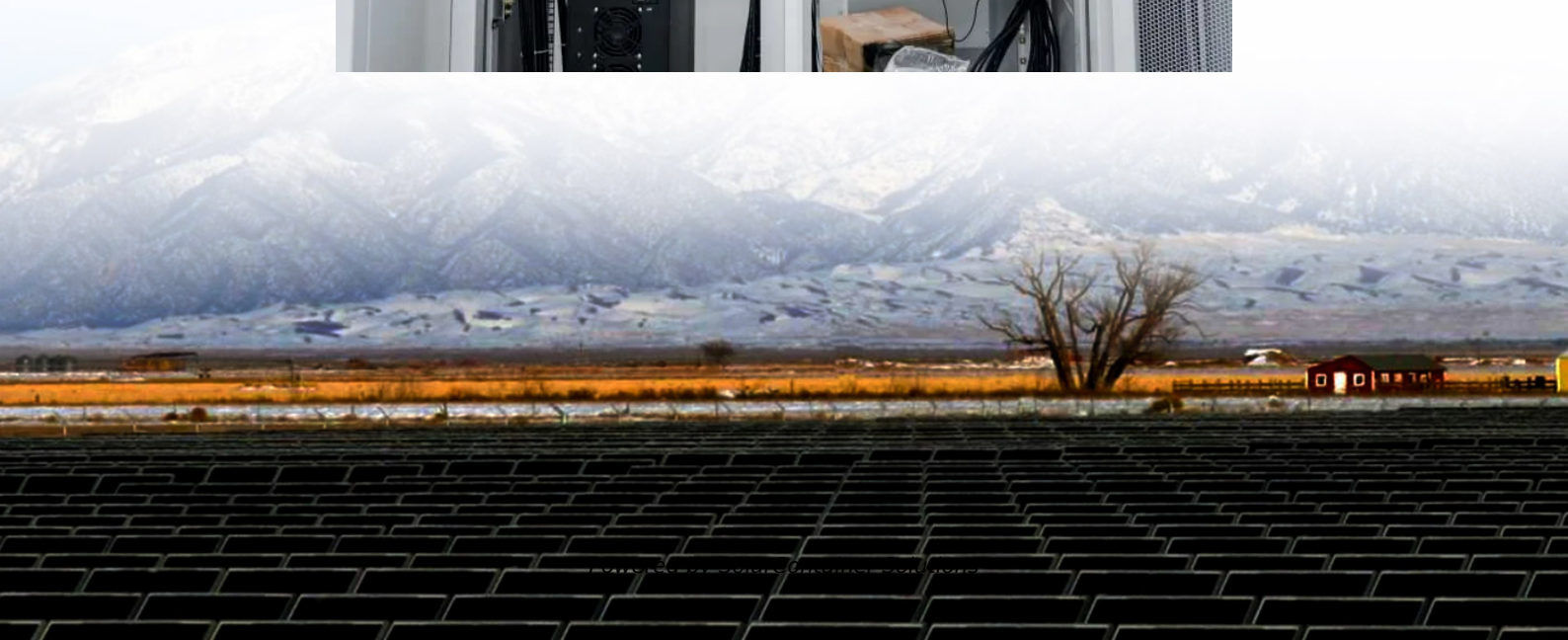


# **Russian lithium iron phosphate BMS battery**





## Overview

---

How does a lithium iron phosphate battery management system work?

The Lithium iron phosphate battery system functions optimally with the aid of a BMS. It plays a crucial role in maintaining the health and efficiency of the battery, ultimately extending its lifespan. How Does A LiFePO4 Battery Management System Work?

.

Do LiFePO4 batteries need a BMS?

However, without a BMS, these batteries are vulnerable to issues like overcharging, over-discharging, and temperature extremes, which can shorten their lifespan or even cause damage. A BMS ensures that each cell in a LiFePO4 battery operates within safe parameters, protecting against potentially hazardous situations.

What is a LiFePO4 BMS?

Whether used in electric vehicles, renewable energy systems, or portable electronics, a robust BMS is indispensable for optimizing the performance and reliability of LiFePO4 batteries. Here are the key functions of a LiFePO4 BMS: In LiFePO4 batteries, the charging and discharging current limits are typically set by battery cell manufacturers.

What is a LiFePO4 battery management system?

A LiFePO4 Battery Management System (BMS) is designed to ensure safe and reliable operation through a range of critical safety features: Prevents the battery cells from being charged beyond their maximum voltage, which could otherwise cause overheating, cell damage, or safety hazards. Stops the battery from discharging below its safe voltage limit.

Can You DIY A LiFePO4 lithium battery?



Yes, you can DIY a LiFePO<sub>4</sub> lithium battery with a Battery Management System (BMS), but it requires some technical expertise, safety precautions, and the right components. Voltage (V): The overall power potential of your battery system (e.g., 12V, 24V, 36V, 48V).

What is a BMS battery & how does it work?

The BMS monitors charging and discharging currents to avoid overloading the BMS Battery. Example: In an EV, currents may spike to 100A during acceleration. The BMS ensures this stays within safe limits. Terms: Overcurrent Protection (OCP): Stops excessive current flow. Short Circuit Protection (SCP): Instantly cuts off during a short circuit. 3.



## Russian lithium iron phosphate BMS battery

---



### Understanding the Role of the BMS in Modern Lithium Batteries

Whether you're dealing with a high-performance LiFePO<sub>4</sub> (Lithium Iron Phosphate) battery in a Porsche or an industrial EV system, understanding what the BMS does can help you diagnose ...

[Request Quote](#)

### 12V Lithium Iron Phosphate Battery Pack with Smart BMS for RV ...

Discover how the 12V lithium iron phosphate battery pack with smart BMS enhances power management in RVs, solar storage, marine systems, and more. Learn its key ...

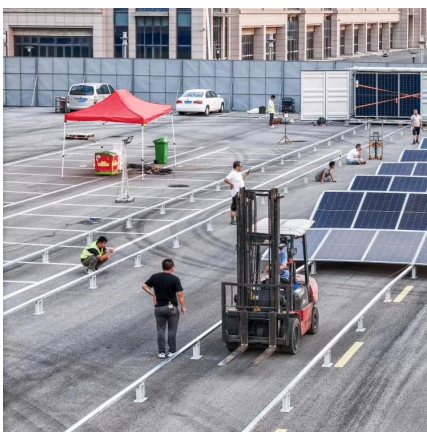
[Request Quote](#)



### [How to Choose a BMS for LiFePO<sub>4</sub> Cells](#)

In this article, we will guide you through the process of choosing a BMS specifically designed for LiFePO<sub>4</sub> cells. Before delving into the selection process, it is essential to understand the ...

[Request Quote](#)



### [BMS -- The Important Part of Lifepo<sub>4</sub> Battery](#)

Lithium iron phosphate batteries are constructed of more than just individual cells connected





together. They also include a battery management ...

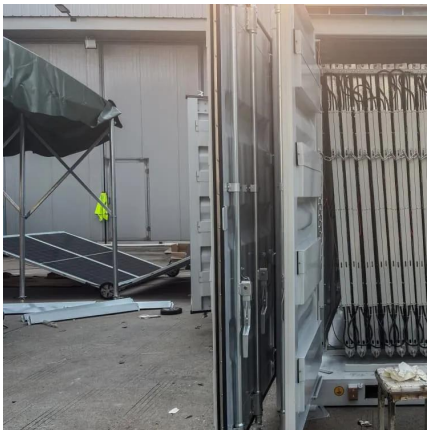
[Request Quote](#)



### [How safe are lithium iron phosphate batteries?](#)

Researchers in the United Kingdom have analyzed lithium-ion battery thermal runaway off-gas and have found that nickel manganese cobalt ...

[Request Quote](#)



### [Amazon : Lithium Iron Phosphate Battery](#)

12V 100Ah LiFePO4 Lithium Battery - Built-in 100A BMS, Low-Temp Protection, 15000+ Cycles -Grade A Lithium Iron Phosphate Battery cells, Rechargeable Battery for Trolling Motor, RV, ...

[Request Quote](#)



### [What is LiFePO4 Battery Management System \(BMS\) ...](#)

However, to fully harness the benefits of LiFePO4 batteries, a Battery Management System (BMS) is essential. In this guide, we'll explain what a ...

[Request Quote](#)





## [BMS -- The Important Part of Lifepo4 Battery](#)

Lithium iron phosphate batteries are constructed of more than just individual cells connected together. They also include a battery management system (BMS) which is not ...

[Request Quote](#)



## [What is LiFePO4 Battery Management System \(BMS\) - LiTime-US](#)

However, to fully harness the benefits of LiFePO4 batteries, a Battery Management System (BMS) is essential. In this guide, we'll explain what a BMS is, how it functions, and why it plays ...

[Request Quote](#)

## [Why a Battery Management System is Critical for ...](#)

Undervoltage during battery discharge is also a concern since discharging a LiFePO4 cell below approximately 2.0V may result in a breakdown of the ...

[Request Quote](#)



## [LiFePO4 Battery BMS: 25 Key Parameters for Smart ...](#)

Discover 25 essential parameters of a LiFePO4 Battery BMS, from smart balancing to Bluetooth connectivity, for safe and efficient battery management ...

[Request Quote](#)



### [Decoding BMS: Your Guide to Choosing the Perfect ...](#)

This ensures optimal battery life, efficiency, and safety. As a reputable manufacturer of lithium iron phosphate battery packs, PLB prioritizes the ...

[Request Quote](#)



### [LiFePO4 Battery BMS: 25 Key Parameters for Smart Management](#)

Discover 25 essential parameters of a LiFePO4 Battery BMS, from smart balancing to Bluetooth connectivity, for safe and efficient battery management in 2025.

[Request Quote](#)

### **Rechargeable life lithium iron phosphate batteries 12v 200ah bms**

We have a talented team who focus on lithium battery BMS researching. We develop this super power, high current BMS especially for high power applications. Except Car Start-up series ...

[Request Quote](#)





### [Lithium Series, Parallel and Series and Parallel](#)

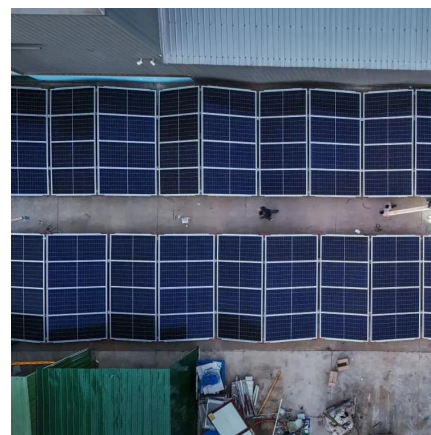
Lithium Series, Parallel and Series and Parallel Connections Introduction Lithium battery banks using batteries with built-in Battery Management Systems (BMS) are created by connecting ...

[Request Quote](#)

### [Reliable Power: LiFePO4 Battery & LiFePO4 cells](#)

Source top-tier lithium iron phosphate solutions from an industry-leading manufacturer. Our A-grade LiFePO4 cells and custom battery packs meet ...

[Request Quote](#)



### **Lithium Batteries: BMS Theory**

Remember, a robust BMS isn't just a component of your battery system; it's the guardian of its safety, efficiency, and reliability. To learn more ...

[Request Quote](#)

### **The Significance of Using Lifepo4 Bms: Facts You Need to Know**

In this blog posts, we will explore what LiFePO4 batteries are, dive into the significance of a LiFePO4 Battery Management System (BMS), discuss the risks associated ...

[Request Quote](#)





## Lithium-Iron-Phosphate Battery Performance Controlled by ...

Considerations regarding the practical use of a lithium-iron-phosphate battery to power a suspended mining vehicle, along with the selection of an active BMS solution, are presented in ...

[Request Quote](#)



## 12V 12Ah LiFePO4 Lithium Battery, 5000+ Deep Cycles, IP67 ...

Buy GOLDENMATE 12V 12Ah LiFePO4 Lithium Battery, 5000+ Deep Cycles, IP67 Waterproof Lithium Iron Phosphate Battery, Built-in BMS, Ideal for Power Wheels, Solar, ...

[Request Quote](#)



## [How to Choose a BMS for LiFePO4 Cells](#)

In this article, we will guide you through the process of choosing a BMS specifically designed for LiFePO4 cells. Before delving into the selection ...

[Request Quote](#)

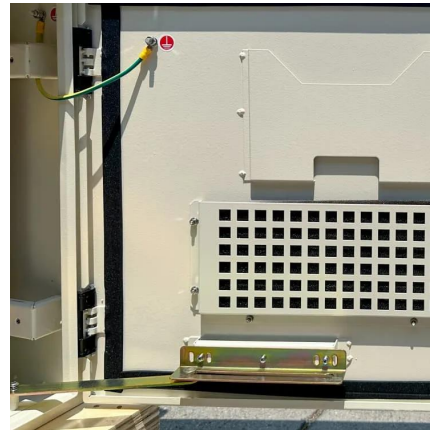




## What Are Lithium Iron Phosphate Batteries?

Lithium Iron Phosphate (LiFePO<sub>4</sub>) batteries are rechargeable cells using lithium-ion chemistry with an iron phosphate cathode. Known for exceptional thermal stability, safety, ...

[Request Quote](#)



## **Home , Lithion Battery Inc.**

Utilizing our proprietary BMS (Battery Management System) Technology, Lithion produces reliable, domestically manufactured cells and battery modules in a ...

[Request Quote](#)

## **Lithium Iron Phosphate Battery with BMS Protection , Safe ...**

This article explores the advantages of lithium iron phosphate batteries with integrated BMS protection, detailing their safety, performance, and broad application across renewable energy, ...

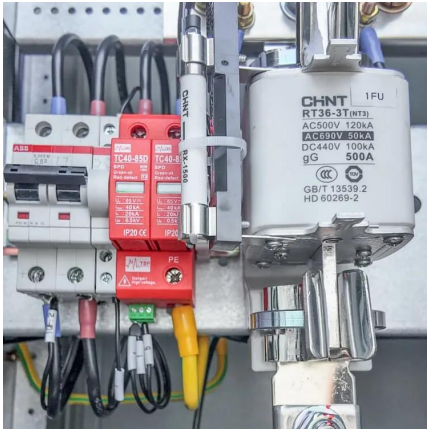
[Request Quote](#)



## Lithium Battery Management Systems - EV Power ...

The EV Power Lithium Battery Management System (BMS) is designed specifically for large format Lithium Iron Phosphate (LFP, LiFePO<sub>4</sub>) cells. It ...

[Request Quote](#)



## [How to Choose a BMS for LiFePO4 Cells](#)

In this article, we will guide you through the process of choosing a BMS specifically designed for LiFePO4 cells. Before delving into the selection process, it is essential ...

[Request Quote](#)



## [\[Full Guide\] What is LiFePO4 Battery Management System?](#)

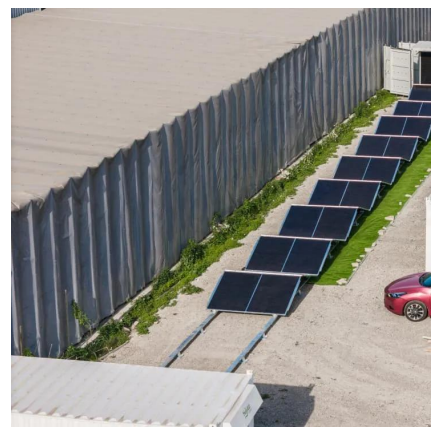
At Redodo, our high-quality LiFePO4 batteries are equipped with an integrated BMS that provides comprehensive protection against typical causes of battery malfunctions ...

[Request Quote](#)

## [Top lithium iron phosphate battery supplier in China](#)

LYTH is top supplier & manufacturer of LiFePO4 battery cells in China, Highest standards of safety, performance, and durability for RV, marine, UPS, golf cart ...

[Request Quote](#)





## Contact Us

---

For catalog requests, pricing, or partnerships, please visit:  
<https://www.espaciovet.es>