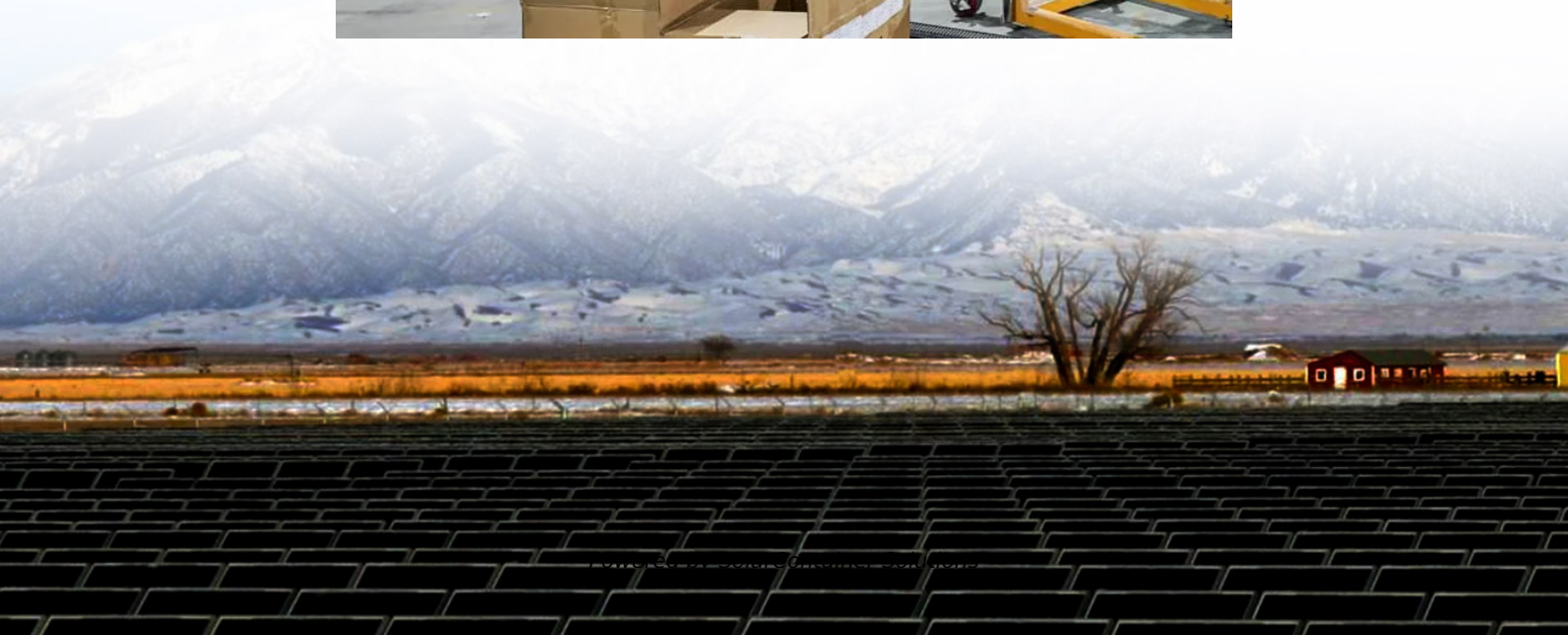


Size of each photovoltaic panel





Size of each photovoltaic panel



[Solar Cell Size: The Ultimate Guide to Choosing the ...](#)

Understanding the dynamics behind solar cell size can go a long way in optimizing your solar energy output. The right solar cell size - in ...

[Request Quote](#)

[What Are the Common Solar Panel Sizes?](#)

Still, most 60-cell solar panels have a size of 39" X 66" and most 72-cell solar panels have sizes of around 39" X 77". However, panels with cell counts of 96, 120, and 144 ...

[Request Quote](#)



[Solar Panel Sizes & Dimensions UK \(2025\)](#)

While panel size usually refers to power output, solar panel dimensions are all about the physical measurements--length, width, and ...

[Request Quote](#)



[Solar Panel Size & Weight Guide \[+ Charts\] - Solartap](#)

Standard residential solar panels measure 66 inches by 40 inches, or a little over 5 feet long



and 3 feet wide. Each panel therefore takes up around 18 square feet. Commercial ...

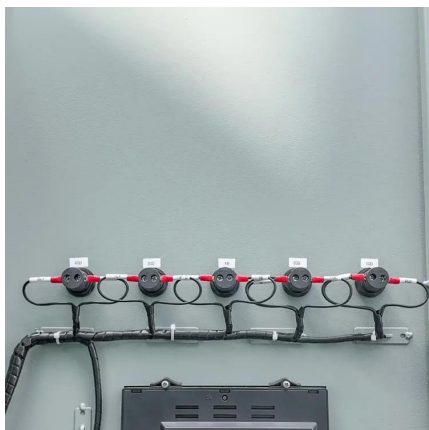
[Request Quote](#)



[Guidelines for the dimensions of solar panels](#)

This article will cover standard solar panel sizes and explain how to determine how many solar panels your photovoltaic system requires. Thus, ...

[Request Quote](#)



Solar Panel Size and Wattage Chart: Standard Sizes & Uses for Each

Using a solar panel size chart can help you choose the best types of solar panels for your home or application. Because the size of a standard solar panel can vary, a chart that ...

[Request Quote](#)



[Solar Panel Sizes And Wattage , Sizing, Dimensions ...](#)

The size or dimensions of the solar panels, measured in height by width, will determine the number of solar panels that will fit on your roof and ...

[Request Quote](#)





[Solar Panels Size & Weight \(Including Commercial Dimensions\)](#)

Individual PV solar cells are thin slices of silicon that typically measure 6 inches long by 6 inches wide. Multiple solar cells are assembled together to form a rectangular ...

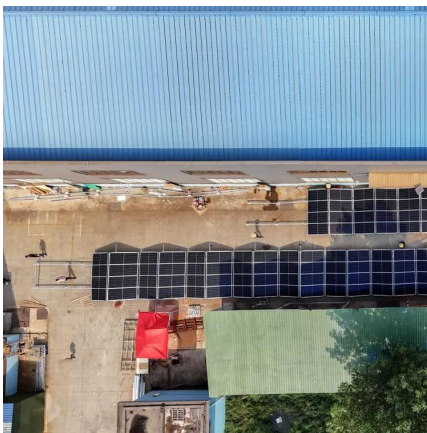
[Request Quote](#)



[Standard Sizes of Solar Panels: Choosing the Right ...](#)

Explore the standard sizes of solar panels to find the perfect fit for your energy needs. Learn more about the size of one solar panel and options ...

[Request Quote](#)



Understanding Photovoltaic Panel Sizes - What You Need to ...

In this detailed guide, we'll explain how solar panel dimensions correlate with wattage, the different size standards, and how to calculate the best fit for your energy goals.

[Request Quote](#)



[How to Calculate Solar Panel KWp \(KWh Vs. KWp\)](#)

How to Calculate Solar Panel KWp: The technical specifications label on the back of your solar pane will tell you its KWp.

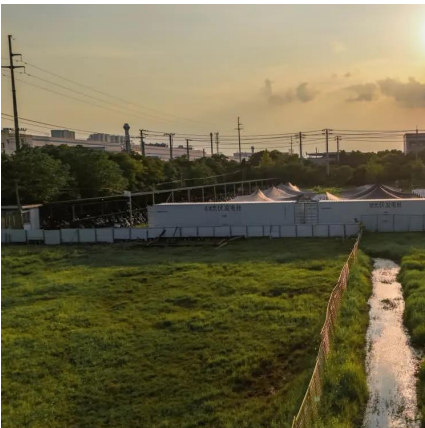
[Request Quote](#)



[We Analyzed 100 Solar Panels: Dimensions, Efficiency, & Load](#)

Solar panel thickness is relatively consistent, ranging from 1.18 inches to 1.57 inches. The most common depth is 1.38 inches. Panel dimensions are influenced by wattage, cell technology, ...

[Request Quote](#)



[The best solar panel size guide every homeowner needs](#)

Solar cells are assembled in grids, and the most common configurations are 60-cell panels for residential use and 72-cell panels for ...

[Request Quote](#)

[Standard Solar Panel Sizes And Wattages \(100W-500W ...\)](#)

The goal here is to get to the average solar panel size by wattage. You can find typical dimensions of 100W, 150W, 170W, 200W, 200W, 220W, 300W, 350W, 400W, and 500W solar ...

[Request Quote](#)





[Solar Panel Sizes and Wattage Explained](#)

To calculate the required system size, multiply the number of panels by the output. For example, a 6.6 kW solar system typically consists of ...

[Request Quote](#)

[Solar Panel Dimensions and Weight: A Complete ...](#)

Residential solar panel dimensions can vary slightly from brand to brand, but this guide can help you understand the basics and choose the best ...

[Request Quote](#)



[Standard Solar Panel Sizes And Wattages \(100W ...](#)

The goal here is to get to the average solar panel size by wattage. You can find typical dimensions of 100W, 150W, 170W, 200W, 200W, 220W, 300W, 350W, ...

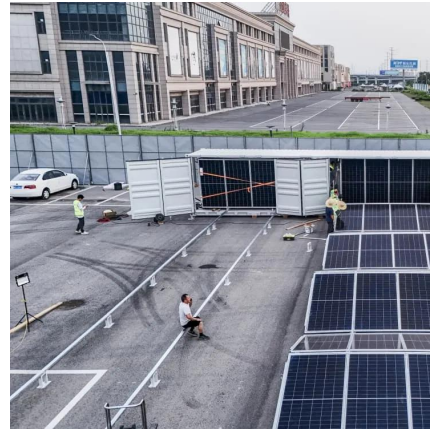
[Request Quote](#)



[Solar Panels Size & Weight \(Including Commercial ...](#)

Individual PV solar cells are thin slices of silicon that typically measure 6 inches long by 6 inches wide. Multiple solar cells are assembled ...

[Request Quote](#)



[Solar Panel Sizes and Wattage Explained](#)

To calculate the required system size, multiply the number of panels by the output. For example, a 6.6 kW solar system typically consists of 20 panels each delivering 330W of ...

[Request Quote](#)



[Solar Panel Dimensions and Sizes: Complete Guide](#)

There are three main sizes of solar panels to know: 60-cell, 72-cell, and 96-cell. For commercial and residential solar panels, the 60-cell and 72-cell solar panels size are most commonly used ...

[Request Quote](#)



[Solar panel size: choosing the right dimensions](#)

Solar panel size affects energy production and installation space. Explore standard sizes and find the perfect fit for your solar project.

[Request Quote](#)





[Solar Panel Dimensions and Sizes: Complete Guide](#)

There are three main sizes of solar panels to know: 60-cell, 72-cell, and 96-cell. For commercial and residential solar panels, the 60-cell and 72-cell solar ...

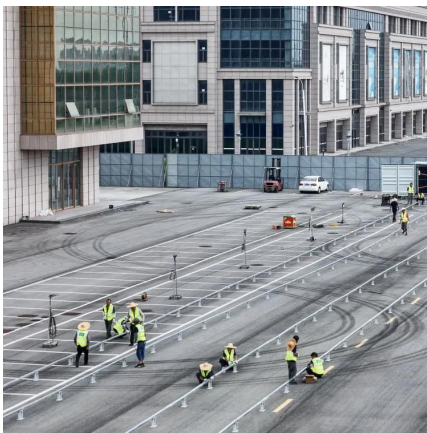
[Request Quote](#)



[Solar Panel Size & Weight Guide \[+ Charts\] - Solartap](#)

Standard residential solar panels measure 66 inches by 40 inches, or a little over 5 feet long and 3 feet wide. Each panel therefore takes up ...

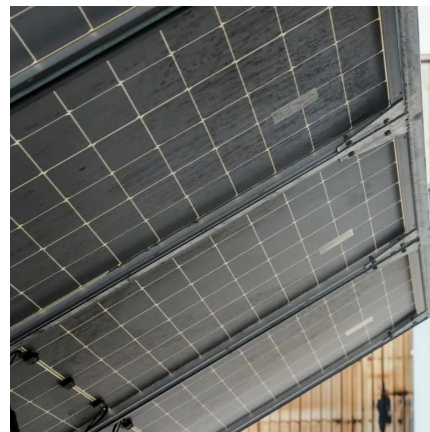
[Request Quote](#)



[Solar Panels Size & Weight \(Including Commercial Dimensions\)](#)

Check out this full guide on solar panels size, weight, and other characteristics, including a comparison between Residential and Commercial panels.

[Request Quote](#)



[The best solar panel size guide every homeowner needs](#)

Solar cells are assembled in grids, and the most common configurations are 60-cell panels for residential use and 72-cell panels for commercial or utility use. A 60-cell panel ...

[Request Quote](#)



[How Big is a Solar Panel? The Solar Panel Size Guide](#)

Most residential panels range between 250 and 400 watts per hour. As solar technology advances, the size of solar panels is decreasing as efficiency increases.

[Request Quote](#)



[Detailed Guide to Solar Panel Size & Dimensions](#)

Looking to install solar panels? Learn about solar panel dimensions, wattage, cell types, and how to calculate the system size for your ...

[Request Quote](#)

Solar Panel Size and Wattage Chart: Standard Sizes & Uses for ...

Using a solar panel size chart can help you choose the best types of solar panels for your home or application. Because the size of a standard solar panel can vary, a chart that ...

[Request Quote](#)





[Solar Panel Size Chart - SizeChartly](#)

Considering these trade-offs helps in deciding whether thin-film panels fit your project needs. Choosing the right type and size of solar panel is crucial for balancing efficiency, cost, and ...

[Request Quote](#)

Contact Us

For catalog requests, pricing, or partnerships, please visit:
<https://www.espaciovet.es>