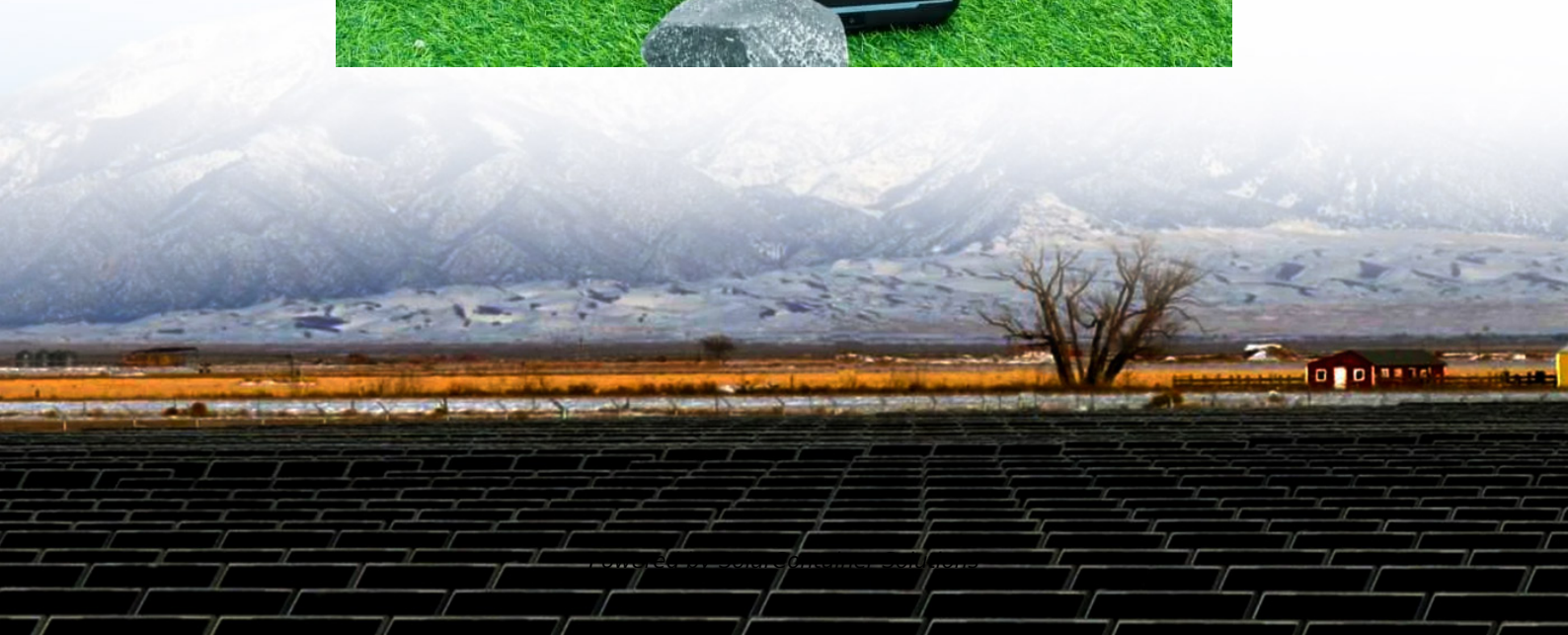


# **Solar high current ring main unit with on-site energy**





## Solar high current ring main unit with on-site energy

---



### [Solar high current ring main unit prank](#)

Xiria is Eaton's SF6-free medium voltage switchgear product family for ring main unit stations and secondary switchgear applications. The highly compact medium voltage switchgear panels are ...

[Request Quote](#)

### [Photovoltaic Power Generation Ring Main Unit Market](#)

What factors are driving the adoption of photovoltaic ring main units in utility-scale solar projects? The global shift toward renewable energy integration and grid modernization is accelerating ...

[Request Quote](#)



### [Ring Main Units: An Integral Part of Modern Electrical ...](#)

Ensure safe, reliable, and efficient power distribution with advanced Ring Main Units (RMUs) for modern electrical networks.

[Request Quote](#)

### [RMUs for Seamless Power Distribution , CLOU GLOBAL](#)

Ring Main Units (RMUs) play a pivotal role in ensuring efficient, reliable, and safe power





distribution in medium voltage networks. Their compact design, fault isolation ...

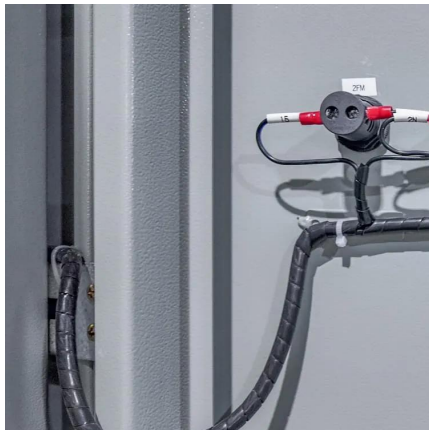
[Request Quote](#)



## What is Ring Main Unit (RMU) and its function in a solar project?

Ring main unit is used in a secondary distribution system. It is basically used for an uninterrupted power supply. Alongside, it also protects your secondary side transformer from ...

[Request Quote](#)



## Ring Main Unit

alfanar Ring Main Units ( RMUs) are a gas insulated, compact, enclosed, and extendable type of MV Switchgear up to 36 KV. The RMUs are installed in a photovoltaic power plant to control ...

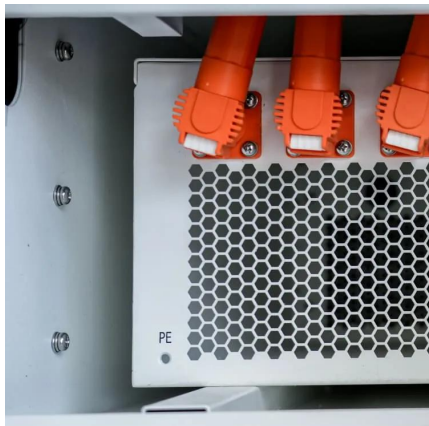
[Request Quote](#)



## [What is Ring Main Unit \(RMU\) and its function in a ...](#)

A standard piece of switchgear in distribution systems comprising of switches for switching power cable rings and of switches in series with fuses ...

[Request Quote](#)

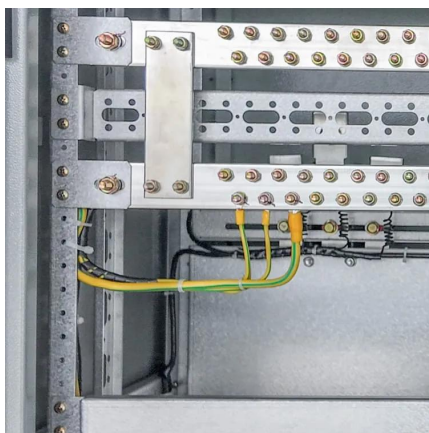




### SOLAR HIGH CURRENT RING MAIN UNIT WITHOUT ...

During the day, it stores the energy generated by solar panels and then discharges to supply energy to the solar street lamp when the light is insufficient or at night.

[Request Quote](#)



### SMART RING 12 KV RING MAIN UNIT, Solar Power Solutions

Does new energy storage require a ring main unit In an electrical system, a ring main unit (RMU) is a factory assembled, metal enclosed set of used at the load connection points of a ring-type ...

[Request Quote](#)

### What is Ring Main Unit (RMU) and its function in a ...

Ring main unit is used in a secondary distribution system. It is basically used for an uninterrupted power supply. Alongside, it also protects ...

[Request Quote](#)



### Ring Main Unit: Components, Types and Applications

RMUs are increasingly being used in renewable energy systems such as wind and solar power plants. They provide safe and efficient power ...

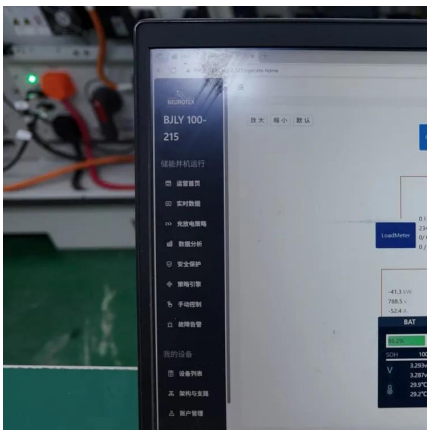
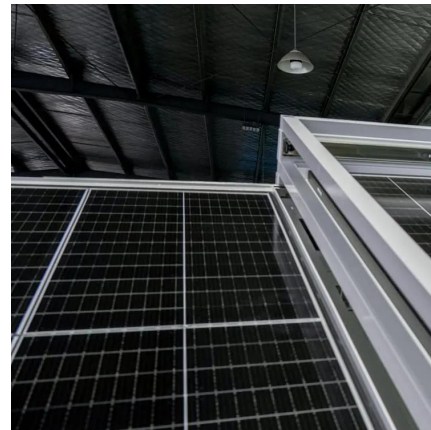
[Request Quote](#)



## SOLAR HIGH CURRENT RING MAIN UNIT WITHOUT BATTERY

During the day, it stores the energy generated by solar panels and then discharges to supply energy to the solar street lamp when the light is insufficient or at night.

[Request Quote](#)



## Photovoltaic Power Generation Ring Main Unit Market

The global shift toward renewable energy integration and grid modernization is accelerating demand for photovoltaic (PV) ring main units (RMUs) in utility-scale solar projects.

[Request Quote](#)

## Ring Main Unit Applications in Renewables

Explore how Ring Main Units enhance grid stability in renewable energy systems, focusing on voltage regulation, power flow management, and grid congestion reduction. ...

[Request Quote](#)





## Technical Specification for 12 kV Automated Smart RMU ...

1. SCOPE d (AIS/GIS) smart ring main unit (SRMU) intended to be used in a 12 kV medium-volt s stem. Thi SRMU should be controlled remotely by using integrated communic

[Request Quote](#)

## **Ring main unit**

In an electrical power distribution system, a ring main unit (RMU) is a factory assembled, metal enclosed set of switchgear used at the load connection points of a ring-type distribution network.

[Request Quote](#)



## Does new energy storage require a ring main unit

How does the ring main unit store energy? 1. Ring Main Units (RMUs) are electrical distribution devices that efficiently manage energy flow within electrical networks, 2. Energy storage in ...

[Request Quote](#)

## 5 kW solar high current ring main unit

Our team of experts works closely with you to design and install customized solar storage solutions that maximize efficiency and savings. From the initial consultation to the final ...

[Request Quote](#)





### **Aegis 36 dd**

This is a highly flexible, general-purpose Remote Terminal Unit designed to remotely monitor and control medium and high voltage switchgear. The Gemini 3 has a modular design such that it ...

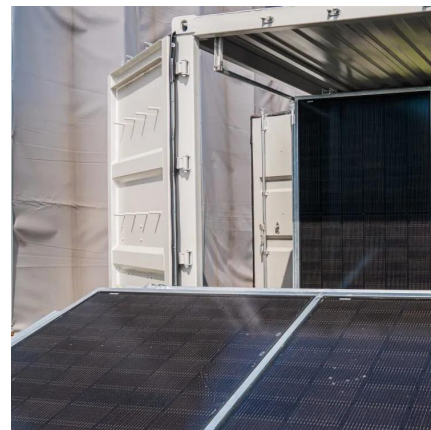
[Request Quote](#)



### what is Photovoltaic high-voltage ring main unit?

A compact, sealed, and insulated medium-voltage (typically 11kV-36kV) switchgear unit used in solar farms to connect multiple PV inverter outputs, ensure safe power flow, and ...

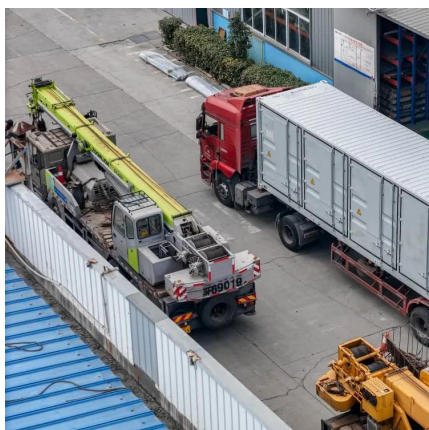
[Request Quote](#)



### What is the function of ring main unit?

1. Power distribution and transmission The ring main unit can transmit power from the high-voltage power grid to the low-voltage power grid and distribute it according to different ...

[Request Quote](#)





## [Test standard for solar high current ring main unit](#)

Test standard for solar high current ring main unit What tools should be prepared for ring main unit testing? The following is a list of the essential tools for ring main unit (RMU) testing should ...

[Request Quote](#)



## **Ring Main Unit (RMU) - VPCPL Energy**

In the modern urban power distribution system, Ring Main Unit is widely used across India and around the world to efficiently meet the growing needs of reliable energy. It's one solution with ...

[Request Quote](#)

## [Teaching materials about solar high current ring main unit](#)

Ring Main Unit (RMU) is compact and robust, designed to offer high reliability and safety. It is simple to maintain, easy to replace, and can such is its flexibility that it can be expanded to ...

[Request Quote](#)



## [CHINT 36/40.5kV Ring Main Unit Empowers New Energy ...](#)

CHINT Ring Main Unit not only solves the technical and environmental challenges, but also improves operational efficiency and profitability for customers.

[Request Quote](#)





## Ring Main Unit (RMU) - VPCPL Energy

In the modern urban power distribution system, Ring Main Unit is widely used across India and around the world to efficiently meet the growing needs of ...

[Request Quote](#)



## Contact Us

For catalog requests, pricing, or partnerships, please visit:  
<https://www.espaciovet.es>