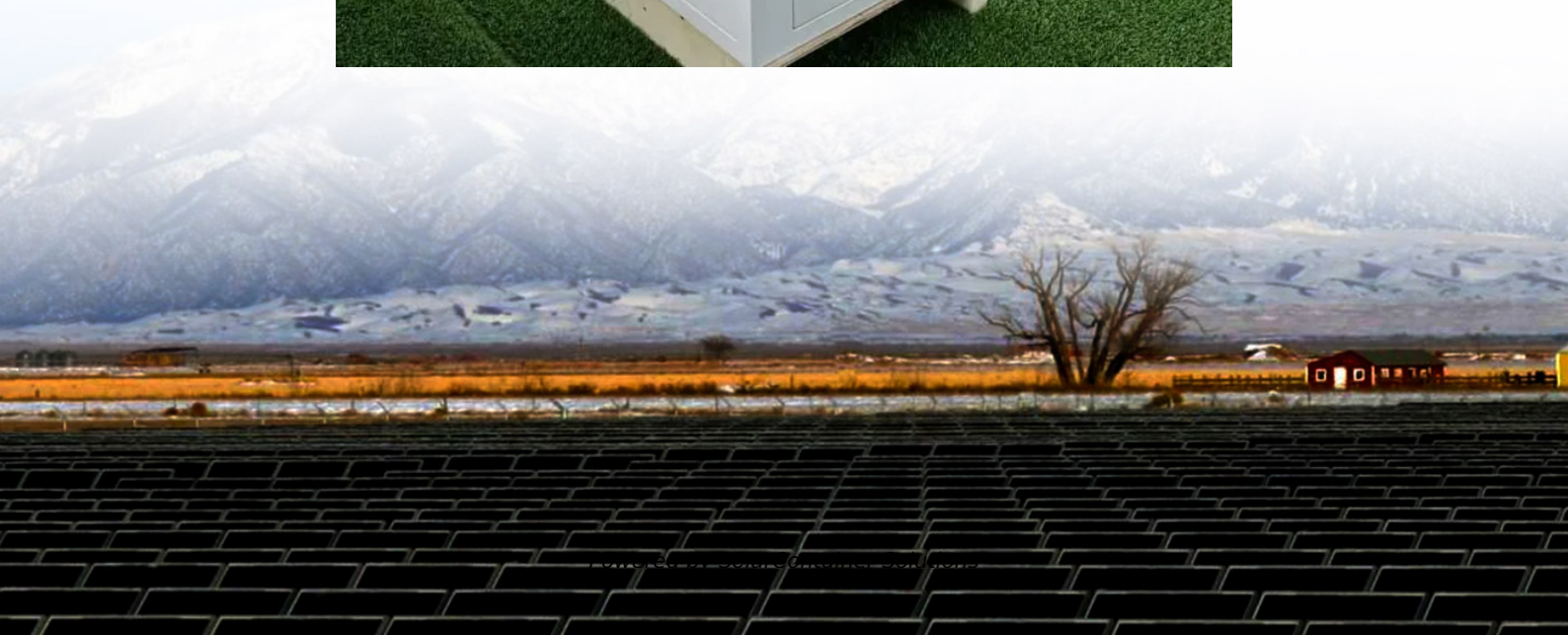


# **Solar panel 20W charging current**





## Overview

---

To derive the current from a 20W solar charger at 12V: 1. You divide 20W by 12V, 2. Resulting in a maximum current output of approximately 1.67 amps, 3. Additionally, this value may vary due to environmental factors and the efficiency of the solar panel.



## Solar panel 20W charging current

---



### [Can a 20W Solar Panel Charge a 12V Battery?](#)

Under optimal conditions--such as bright, direct sunlight--a 20W solar panel can produce approximately 1.67 amps of current. However, this output can vary depending on ...

[Request Quote](#)

### [20 Watt Solar Panels \(Power - Charge - Kits - Control\)](#)

Under optimum conditions, a 20W solar panel can create 1.34 amps per hour. For example, under perfect conditions, the panel will produce 20 Watts for 7 hours per day, 7 days ...

[Request Quote](#)



### **LOOM SOLAR 20 Watt**

Save electricity with the Loom Solar 20 Watt Solar Panel that lets you charge mobiles, small 7 Ah to 12 Ah batteries, and much more. This solar panel is Compact, Energy-efficient, and Long ...

[Request Quote](#)



### [12v 20w Solar Panel Monocrystalline 435x356. Fully ...](#)

Small, compact, all weather and built to high standards. 12v 20w Solar Panel Monocrystalline



an ideal panel for regular battery charging and maintenance ...

[Request Quote](#)



### [What Can I Do With A 20-Watt Solar Panel Power? Guide](#)

In ideal circumstances, a 20W solar panel can generate 1.34 amps of current per hour. Typically, it is determined by multiplying the voltage (V) in volts by the power in watts (W).

[Request Quote](#)



### [20W Small Solar Panel Charger 5V USB-A USB-C ...](#)

Charge smartphones, tablets, power banks, USB fans, smartwatches, and other 5V devices  
\*\*directly under sunlight\*\*. Ideal for ...

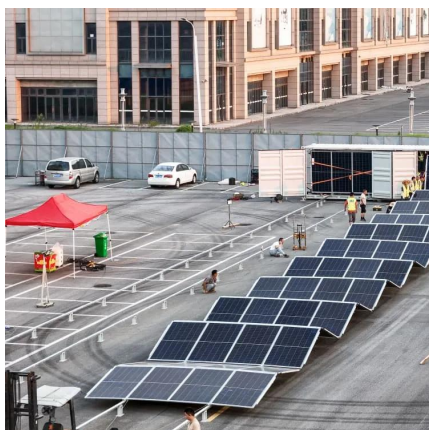
[Request Quote](#)



### **Calculate charging rate from solar panel , All About Circuits**

I'm wondering how to calculate the time it will take to charge my battery from a 20W solar panel. The battery is 12V/18Ah. The solar charger is a cheapo from Aliexpress so ...

[Request Quote](#)







### Does a 20 watt, 24 volt system have enough amps to charge?

It doesn't seem like a wiring error, but an oversized battery with an undersized solar panel. 3A charge every day should be the bare minimum. A once a week charge of 15Ah x ...

[Request Quote](#)



### What is the output current of a 20w solar panel?

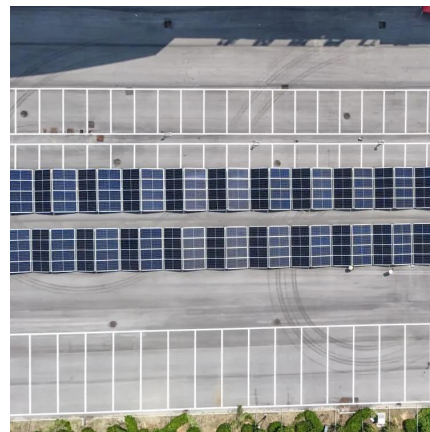
For a typical 20W panel operating under ideal conditions, the output current can be calculated based on the relationship between watts, ...

[Request Quote](#)

### What is the output current of a 20w solar panel? , NenPower

For a typical 20W panel operating under ideal conditions, the output current can be calculated based on the relationship between watts, current, and volts using the formula: ...

[Request Quote](#)



### 20W Small Solar Panel Charger 5V USB-A USB-C Foldable ...

Charge smartphones, tablets, power banks, USB fans, smartwatches, and other 5V devices **\*\*directly under sunlight\*\***. Ideal for outdoor emergencies, road trips, or off-grid ...

[Request Quote](#)



### [How many amps does a 20w solar 12v charger have , NenPower](#)

To derive the current from a 20W solar charger at 12V: 1. You divide 20W by 12V, 2. Resulting in a maximum current output of approximately 1.67 amps, 3. Additionally, this ...

[Request Quote](#)



### [How many amps does a 20w solar 12v charger have](#)

To derive the current from a 20W solar charger at 12V: 1. You divide 20W by 12V, 2. Resulting in a maximum current output of approximately ...

[Request Quote](#)

### [Can A 20W Solar Panel Charge A 12v Battery?](#)

This makes it suitable for applications where rapid charging is not a priority or space constraints are a concern. It is essential to consider factors such as the solar panel's efficiency, available ...

[Request Quote](#)





### [How long would it take my 20W solar panel to ...](#)

Let's assume battery is at 20% depth of charge. So 1.8Ah remaining. Thus needs 7.2Ah of charge. Panel will allow the mppt to output ...

[Request Quote](#)

### **How long would it take my 20W solar panel to recharge my 12V ...**

Let's assume battery is at 20% depth of charge. So 1.8Ah remaining. Thus needs 7.2Ah of charge. Panel will allow the mppt to output 20/14A =1.4A. So with full sun and a ...

[Request Quote](#)



### [Topsolar Solar Panel Kit 20W 12V Monocrystalline ...](#)

About this item Perfect for off grid 12 volt batteries charging system and a variety of DC applications, designed for maintaining 12 volt batteries in car, RVs, ...

[Request Quote](#)

### [20 Watt Solar Panels \(Power - Charge - Kits - Control\)](#)

Under optimum conditions, a 20W solar panel can create 1.34 amps per hour. For example, under perfect conditions, the panel will produce ...

[Request Quote](#)



### [Lithium \(LiFePO4\) Battery Charge Time Calculator](#)

Use our lithium battery charge time calculator to find out long how long it will take to charge a lithium battery with solar panels or with a battery ...

[Request Quote](#)



### [TOPENS TSQ20W Solar Panel 20-Watt 24V ...](#)

Reliable Solar Panels Use this 20W 24V monocrystalline solar panel kit to generate power wherever, whenever there is sunlight! It's energy ...

[Request Quote](#)



### [FlexSolar 20W Solar Panel Charger 5V USB-A USB ...](#)

FlexSolar 20W Solar Panel Charger 5V USB-A USB-C Output Portable Foldable Small Power IP67 Waterproof Camping Backpacking Hiking ...

[Request Quote](#)







## Can A 20W Solar Panel Charge A 12v Battery?

A 20-watt solar panel can efficiently charge a 20Ah 12-volt battery in approximately 17 hours of direct sunlight, assuming ideal conditions and 100% efficiency. This makes it suitable for ...

[Request Quote](#)



## **Newpowa 20W High-Efficiency Monocrystalline Solar Panel for ...**

Amazon : Newpowa 20W High-Efficiency Monocrystalline Solar Panel for Off Grid System, Charge 12V Battery of RV, Boat, Camper, Trailer, Gate Opener : Patio, Lawn & ...

[Request Quote](#)



## What Can I Do With A 20-Watt Solar Panel Power?

In ideal circumstances, a 20W solar panel can generate 1.34 amps of current per hour. Typically, it is determined by multiplying the voltage (V) in ...

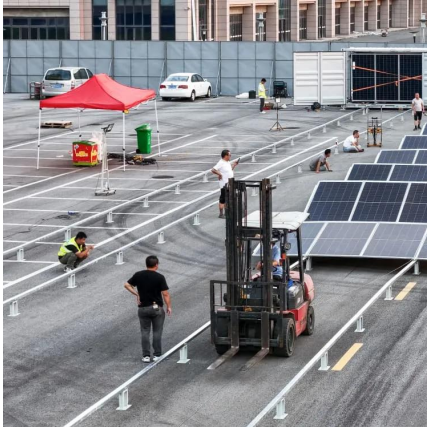
[Request Quote](#)



## **solar pwm battery charger**

Hi, have just designed and built a pwm battery charger to charge from a 20w 1amp max solar panel. before I purchase a new battery I need to know something so I don't damage ...

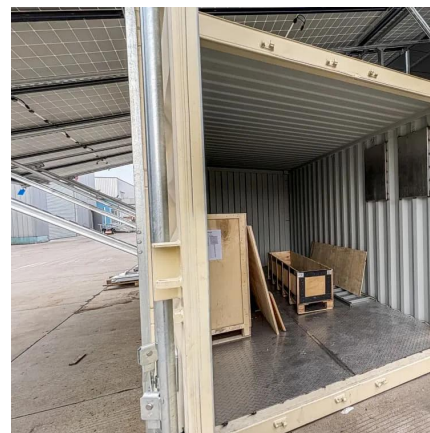
[Request Quote](#)



### [The 9 Best Solar Chargers of 2025 , Tested & Rated](#)

A good solar charger lets you power your essential communication and outdoor electronics, no matter how far off the grid you go. Over the last ...

[Request Quote](#)



### **20 w Solar Panel Kit**

12V 20W Solar Panel Charging Kit with 5A solar controller 20 watt Solar Panel Kit 20 watt Solar panel specifications: Peak power: 20W Maximum power voltage: 17.5V Maximum power ...

[Request Quote](#)



### [How many amps does a 20w18v solar panel charge? , NenPower](#)

For a 20W 18V solar panel, the charging current is approximately 1.1 amps; this is derived from the power rating given by the formula (Power = Voltage × Current).

[Request Quote](#)





### [Solar Panel Charging Time Calculator](#)

Solar Panel Charging Time Calculator: To calculate the charging time, input panel wattage, battery Ah, and local peak sun hours.

[Request Quote](#)

## Contact Us

---

For catalog requests, pricing, or partnerships, please visit:  
<https://www.espaciovet.es>