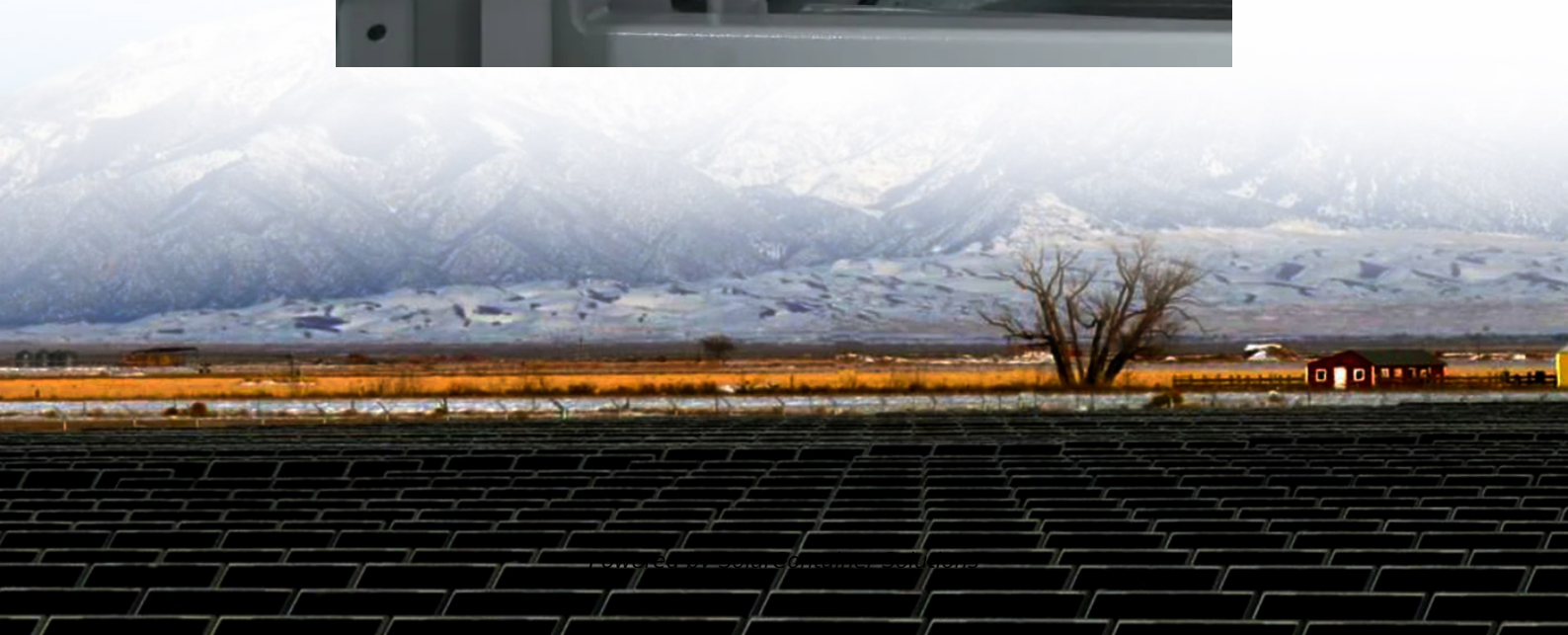


The impact of EMS on communication base stations





Overview

Why is radio communication important in EMS?

Proper radio communication allows EMS personnel to prepare for the call before arrival on the scene. Understanding the scene provides time for the responder to formulate a response before arrival, especially if a patient must be transported to the ER. FIGURE 1. Portable radios are essential gear in mass casualty incidences but.

What is EMS and how does it work?

When modern EMS began in the early 1970s, base stations and mobile units were still relying on what was essentially mid-century technology to transmit information. With this "can and string" technology, sound was converted to an analog signal, which was then transmitted by radio that used very high frequency (VHF) waves.

How can public safety broadband support EMS response?

They identify the different public safety broadband capabilities needed to support EMS response (e.g., video consultation with a base station physician). They examine real time "tactical" uses as well as "strategic" uses of broadband data which will support both incident response and future analysis.

How do EMS responders communicate with patients?

The number one rule of therapeutic communication is remaining calm while reassuring the patient that effective care will be provided. Specifically, an EMS responder should: Provide his or her name upon arrival so the patient feels at ease.

Why do EMS agencies need to collaborate with industry?

There is a need for ongoing collaboration between EMS agencies and industry in order to ensure that new technology solutions are designed for mission



critical response and patient care.

Do EMS agencies need to collaborate with hospital emergency departments?

EMS agencies need to collaborate with hospital emergency departments and similar entities to examine how patient and incident data flows from the scene to the Emergency Communications Center and on to EMS responders and then to hospitals.



The impact of EMS on communication base stations



[Chapter 5 Objectives Flashcards , Quizlet](#)

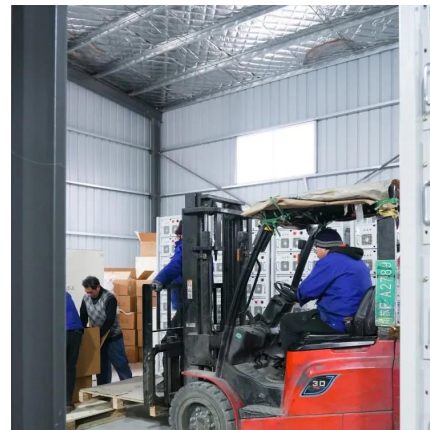
Study with Quizlet and memorize flashcards containing terms like Discuss the purposes and characteristics of each component of a typical EMS communication system. (Base station, ...

[Request Quote](#)

[Text, Email, WhatsApp , Always-On Emergency Comms](#)

Streamline your emergency communication with secure alerts that are impossible to miss. Quickly and easily communicate during any emergency or other disruptive event.

[Request Quote](#)



Comprehensive Evaluation of the Base Station Hospital System

Over the next twelve month County EMS and PCGs, conducted a comprehensive evaluation of the County base station hospital system and trauma center catchment area designation. The ...

[Request Quote](#)

Effective Communication In EMS

Medical errors in the U.S. cause 250,000-400,000 deaths annually, primarily due to communication failures. Experts urge improved ...



[Request Quote](#)



[EMT Ch 13 Communications Flashcards , Quizlet](#)

Study with Quizlet and memorize flashcards containing terms like Communications Systems, Base stations, Mobile radios and more.

[Request Quote](#)



[Chapter 5 Communication Questions Flashcards , Quizlet](#)

To ensure accuracy and synchronicity, most EMS systems use military time rather than standard A.M. and P.M. designations. Choose the military time that correctly represents 9:32 P.M. ...

[Request Quote](#)



The Importance of Connected EMS: Radio Coverage & Constant Communication

Especially when it comes to ambulances and EMS vehicles in a mass casualty incident (MCI), prehospital care and seamless communication is vital. There's coordination ...

[Request Quote](#)





Characterization and Evaluation of the Visual Impact of ...

Abstract --Besides the increase of mobile communication services and providers in Peru, base stations (BS) have grown greatly without considering their visual impact. The characterization ...

[Request Quote](#)



Chapter 5: Communication Flashcards , Quizlet

Study with Quizlet and memorize flashcards containing terms like base station, Where should base stations be located?, What are components of an Emergency ...

[Request Quote](#)

Emerging EMS Technology

The National Public Safety Telecommunications Council (NPSTC) and the National Association of State EMS Officials (NASEMSO) Joint EMS Communications and Technology Working Group ...

[Request Quote](#)



Microsoft Word

Providing high-quality emergency response, including the deployment of technology platforms that improve communications and speed transmission of data, photo ...

[Request Quote](#)



372 Talk It Out: The Impact of Physician-Patient Communication ...

This retrospective analysis examined OLMC calls from a large, county-based, urban EMS system, covering eight different agencies. The base station, located at a tertiary care center, is staffed ...

[Request Quote](#)



E74

It is the primary way EMS personnel obtain patient information, interact with medical facilities, and contact other emergency agencies. A communication breakdown between emergency ...

[Request Quote](#)

Critical connections: The challenges and solutions in public safety

Whether responding to a medical emergency, coordinating disaster relief, or ensuring officer safety in high-risk situations, public safety radio systems provide mission-critical

[Request Quote](#)





Environmental Impact Assessment of Power Generation Systems ...

Abstract and Figures Resumen Hybrid power systems were used to minimize the environmental impact of power generation at GSM (global systems for mobile communication) ...

[Request Quote](#)

[ch5 communication review Flashcards, Quizlet](#)

The federal communications commission (FCC) has jurisdiction over all radio operations nationally, including those in EMS systems. They license base stations, assign a ...

[Request Quote](#)



[The Importance of Connected EMS: Radio Coverage ...](#)

Especially when it comes to ambulances and EMS vehicles in a mass casualty incident (MCI), prehospital care and seamless communication ...

[Request Quote](#)



COMAR Base Stations 2000

BASE STATIONS Cellular communication systems require the use of many base stations located throughout a service area. When a user places a call, his or her handset communicates with a ...

[Request Quote](#)



L74

Repeater stations eliminate communication problems, such as the inability to hear, which can occur between a base station and another mobile unit communicating with the same base.

[Request Quote](#)



[Base Stations and Cell Towers: The Pillars of Mobile ...](#)

Base stations and cell towers are critical components of cellular communication systems, serving as the infrastructure that supports seamless ...

[Request Quote](#)



[Emergency Care, Fourteenth Edition, Chapter 17, ...](#)

In some EMS systems, simple standard communications are transmitted by pushing a button on a mobile data terminal (MDT) mounted in the ambulance. Carry portable radio whenever you ...

[Request Quote](#)

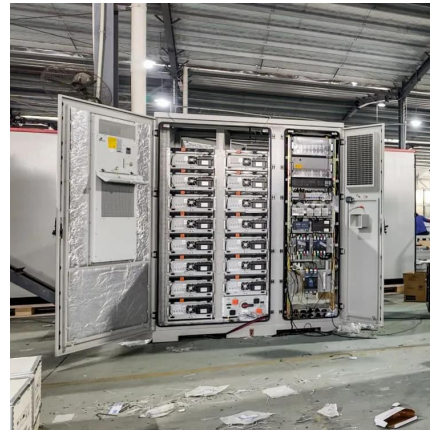




[Wisconsin Emergency Medical Services Communication Plan](#)

The plan was originally created in 2002 with input from an ad hoc committee attached to the EMS Advisory Board. Subsequent versions of the plan were adopted as changes in rules and ...

[Request Quote](#)



[EMS System Communications - georgiaemsacademy](#)

The base station radio generally sites on a desk and is programmed to transmit with increased power to overcome any obstacles or distance that could affect signal propagation.

[Request Quote](#)

Biological effects from exposure to electromagnetic radiation ...

The siting of cellular phone base stations and other cellular infrastructure such as roof-mounted antenna arrays, especially in residential neighborhoods, is a contentious subject in land-use ...

[Request Quote](#)



Post-earthquake functional state assessment of communication base

Highlights o A method to evaluate the post-earthquake functionality of communication base stations using Bayesian network is developed. o The dependence ...

[Request Quote](#)



How EMS communication has changed in the digital age

Many EMS systems today are already using 3G technology. Voice-based dispatch communications are replaced by mobile data terminals (MDT) that display key information ...

[Request Quote](#)



Contact Us

For catalog requests, pricing, or partnerships, please visit:
<https://www.espaciovet.es>