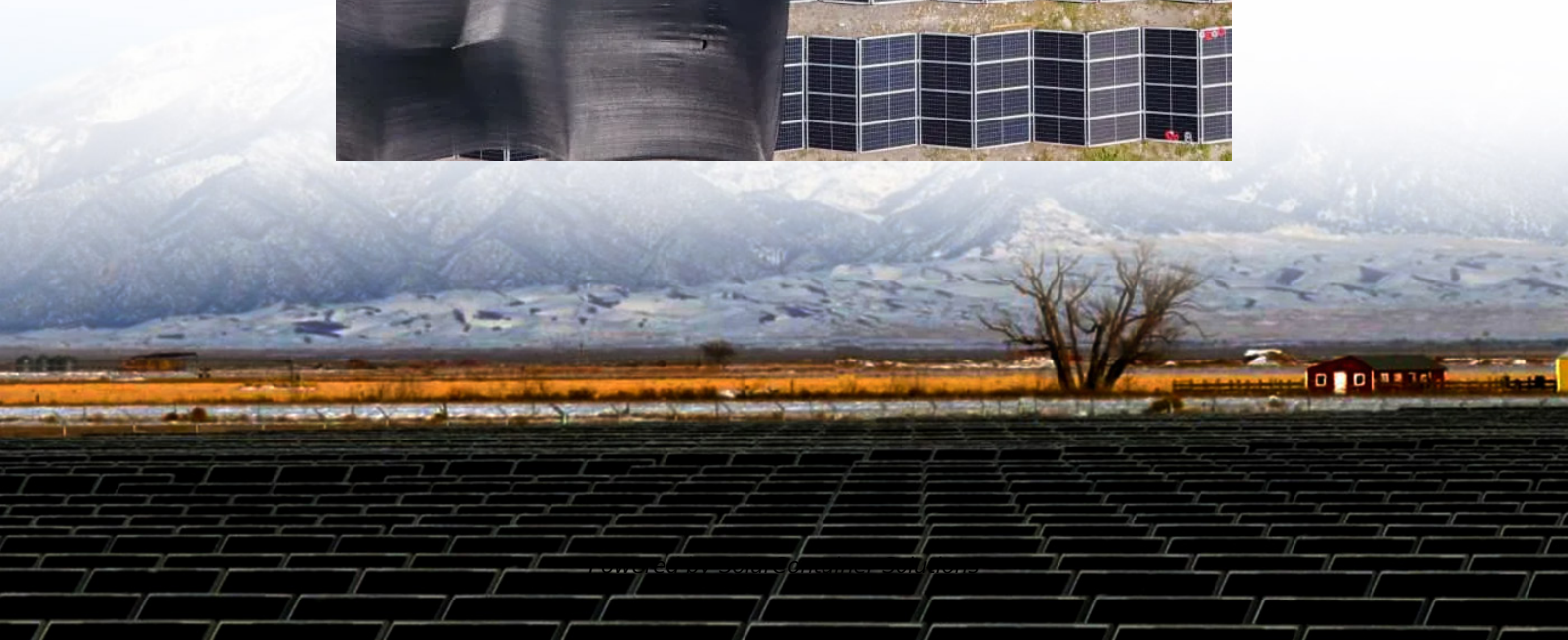
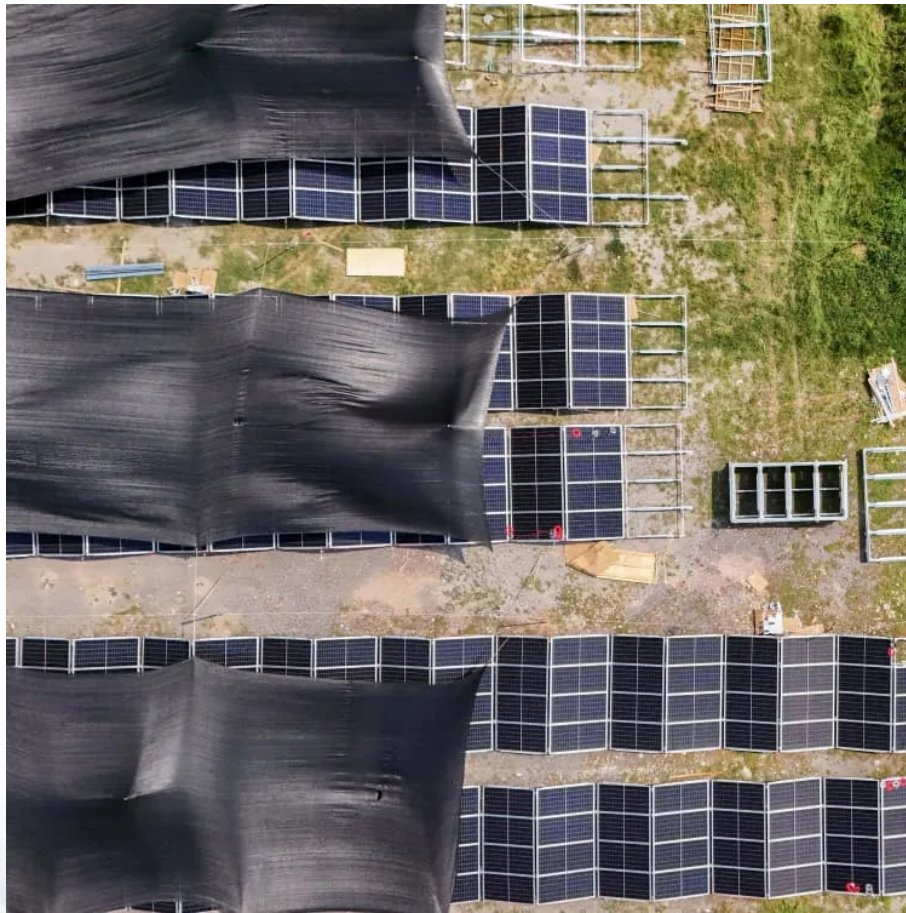


The maximum power consumption of outdoor power supply





Overview

Do external power supplies have a power efficiency mandate?

At a global level, mandates for power efficiency exist for most consumer electronics and home appliances. External power supplies have had regulations dating back to 2004, when the California Energy Commission created one of the first mandates for efficiency of external power supplies used to power appliances or consumer electronic devices.

How many external power supplies are there in the EU?

In 2020, 1.7 billion external power supplies (EPS) were in use in the EU27, of which 75% for residential use, on average 6.5 units per EU household. They converted 48 TWh/a of electricity from the 220V mains to the input needed by the powered products.

What is an external power supply?

Sign up for email updates on regulations for this and other products As defined in the Code of Federal Regulations (CFR), "external power supply" means an external power supply circuit that is used to convert household electric current into DC current or lower-voltage AC current to operate a consumer product.

What percentage of power does a power supply take?

All specifications, both EU and US standards, are based on taking an average of 25%, 50%, 75% and 100% of the nominal output power.

How do I calculate my maximum power output during a camping trip?

To calculate your maximum power output, start by making a list of all the devices you plan to use simultaneously during your camping trip. For instance, you might want to charge your smartphone while powering a portable fan and a small LED light.



How much power can a Philips Hue outdoor power supply withstand?

The bottom line is that the maximum power is a little more than 70 watts, much more than the 40 watt power supply from Philips Hue should be able to withstand. But with a measuring device I was able to make interesting findings. The outdoor power supply seems to have enough reserves.



The maximum power consumption of outdoor power supply



[How to Calculate Power Needs for Camping Equipment](#)

Explore our comprehensive guide on how to calculate power needs for camping equipment. From fridges to lanterns, learn the essential tips for ensuring you have the right portable power ...

[Request Quote](#)

Requirements, challenges, and novel ideas for wearables on power supply

The combination of the energy harvesting system and the micro energy storage unit enables the continuous power supply of wearables in different circumstances of daytime, ...

[Request Quote](#)



What is the appropriate power consumption for outdoor energy ...

Determining the appropriate size for an outdoor energy storage solution involves a comprehensive analysis of energy consumption patterns. Begin by evaluating the total energy ...

[Request Quote](#)



[How to Calculate Power Needs for Camping ...](#)

Explore our comprehensive guide on how to calculate power needs for camping equipment.



From fridges to lanterns, learn the essential tips for ensuring you ...

[Request Quote](#)



[International External Power Supply Regulations Whitepaper](#)

The EISA 2007 act regulated all single-output external power supplies up to 250W of output power and stipulated minimum efficiency requirements for external power supplies, including ...

[Request Quote](#)



[How to Choose an LED Power Supply » Easy ...](#)

Here you can enter the power consumption of all LED lamps to be operated on the power supply as well as the desired power reserve. Alternatively, the ...

[Request Quote](#)



PCRM1727A_00_23aprv_ca

This function limits the maximum power consumption. It helps to reduce power usage if the cooling load is high, for example, at startup or during large gatherings and periods of direct ...

[Request Quote](#)



[How to Choose the Correct Power Supply for Your ...](#)

Discover the best power supply for your CCTV camera. Compare AC, DC, PoE, and centralized power options to ensure reliability and efficiency.

[Request Quote](#)



[How to choose an outdoor power supply?](#)

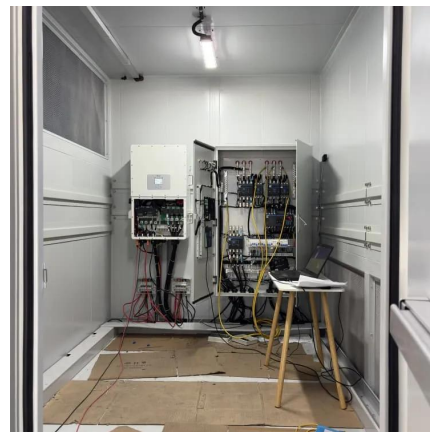
For example, a 500W rice cooker + 600Wh capacity outdoor power supply can be directly calculated to use time: $600 / 500 = 1.2$ hours. If ...

[Request Quote](#)

[Understand Aironet and Catalyst AP Power Requirements ...](#)

This document describes different Power over Ethernet standards, lists power requirements, and compatible power supplies for Cisco APs.

[Request Quote](#)



UniFi AC AP Datasheet

Advanced Acoustic Speaker The UniFi AC EDU AP provides high-quality sound with accurate voice reproduction for announcements over Wi-Fi. Power over Ethernet (PoE) Includes PoE ...

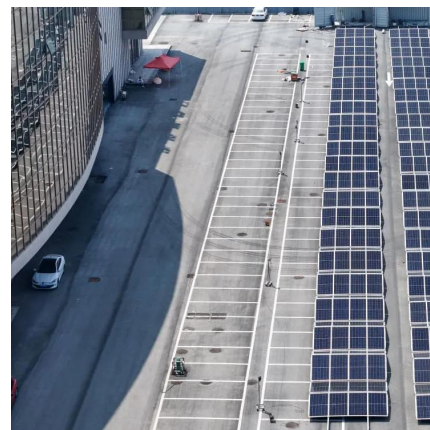
[Request Quote](#)



[A Guide to Outdoor Linear Lighting: Power Supply ...](#)

Discover how to match power supply and install outdoor linear lighting for optimal performance and longevity.

[Request Quote](#)



External Power Supplies

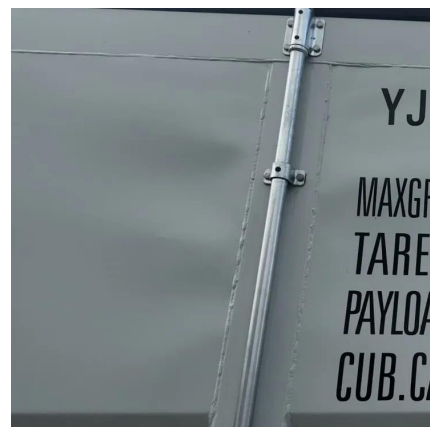
DOE undertook a rulemaking that concluded with a final rule in February 2014 to established new and amended energy conservation standards for external ...

[Request Quote](#)

Solved: PoE maximum output

What's the maximum power (Watt) that can be drawn from a single PoE port and a PoE+ port? From my studies what I understand is around 15W for PoE (usable 12W) and 30W ...

[Request Quote](#)





[Cisco Access Point Power Requirements Quick Reference](#)

Introduction This article will explain different Power over Ethernet standards, list power requirements and compatible power supplies for Cisco's latest AP series and the side effects ...

[Request Quote](#)

[Power Station Requirements for Camping: Figure out ...](#)

Discover how to calculate your power needs for camping and how to find the perfect power station for your situation. Follow our step-by-step ...

[Request Quote](#)



Philips Hue in the garden: The most important information at a ...

How many lamps can be connected to one power supply unit? Philips Hue offers two different power supplies. The "normal" 40 watt power supply and a particularly powerful ...

[Request Quote](#)

External Power Supplies

The Ecodesign regulation covers external power supplies with an output power of maximum 250 W, which are intended to work with electrical and electronic household and office equipment.

[Request Quote](#)



[Outdoor Access Points RG-AP680-IO, Wi-Fi 6 Dual ...](#)

High-Power Wi-Fi 6 Outdoor AP RG-AP680-IO
Ports Dimensions Up to eight spatial streams
Max. data rate 5.951 Gbps IP68 rating Built-in omnidirectional ...

[Request Quote](#)



[VRV Electrical details Outdoor Unit , PDF , Power ...](#)

The document includes a table listing the nominal power consumption, rated load amps, maximum fused amps, and minimum circuit amps for different models ...

[Request Quote](#)



The new 100 Watt outdoor power supply: How many lamps are ...

The bottom line is that the maximum power is a little more than 70 watts, much more than the 40 watt power supply from Philips Hue should be able to withstand. But with a ...

[Request Quote](#)

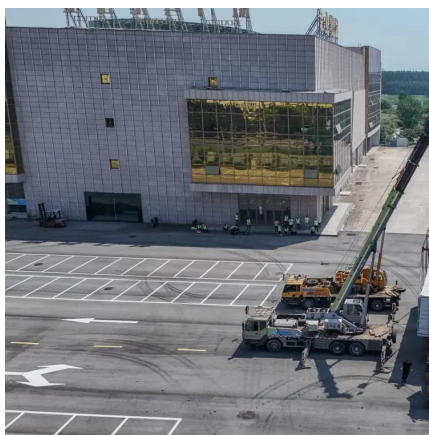




[The new 100 Watt outdoor power supply: How many ...](#)

The bottom line is that the maximum power is a little more than 70 watts, much more than the 40 watt power supply from Philips Hue should be ...

[Request Quote](#)



5G Power Whitepaper

Efficient Power Supply The 5G intelligent power uses the advanced power and electronics technologies to achieve the maximum efficiency of 98% power conversion and reduce power ...

[Request Quote](#)

[EX4300 Power System , Juniper Networks](#)

N+N Redundancy Configuration of AC Power Supplies You can configure your switch for N + N redundancy, in which N power supplies can be removed or fail and the remaining N power ...

[Request Quote](#)



[How to choose an outdoor power supply?](#)

For example, a 500W rice cooker + 600Wh capacity outdoor power supply can be directly calculated to use time: $600 / 500 = 1.2$ hours. If you use mAh to express, it is more ...

[Request Quote](#)



VRV Electrical details Outdoor Unit , PDF , Power Engineering , Power

The document includes a table listing the nominal power consumption, rated load amps, maximum fused amps, and minimum circuit amps for different models to determine the ...

[Request Quote](#)



[Power Station Requirements for Camping: Figure out your](#)

Discover how to calculate your power needs for camping and how to find the perfect power station for your situation. Follow our step-by-step guide here.

[Request Quote](#)

External Power Supplies

DOE undertook a rulemaking that concluded with a final rule in February 2014 to established new and amended energy conservation standards for external power supplies.

[Request Quote](#)





External Power Supplies

The Ecodesign regulation covers external power supplies with an output power of maximum 250 W, which are intended to work with electrical and electronic ...

[Request Quote](#)

[Hue Outdoor Power Supply 95W , Philips Hue](#)

Power up your outdoor lights with this Hue 95W outdoor power supply unit designed specifically for outdoor use. Shop today!

[Request Quote](#)



[How much solar outdoor power supply is needed , NenPower](#)

Selecting the right battery capacity requires consideration of both daily energy consumption and reserve needs. Users should determine how much energy they consume at ...

[Request Quote](#)



Contact Us

For catalog requests, pricing, or partnerships, please visit:
<https://www.espaciovet.es>